

# TELFORD INFANT SCHOOL



## NEWSLETTER

Dear Parents and Carers,  
It is another busy week here at Telford Infants and tomorrow we are looking forward to the filming of a day in the life of Telford Infant School to give our prospective parents a glimpse of what life is like at Telford Infants. Although the world looks very different on the outside, school life continues here with happy children who are full of fun and eager to learn in their bubbles.

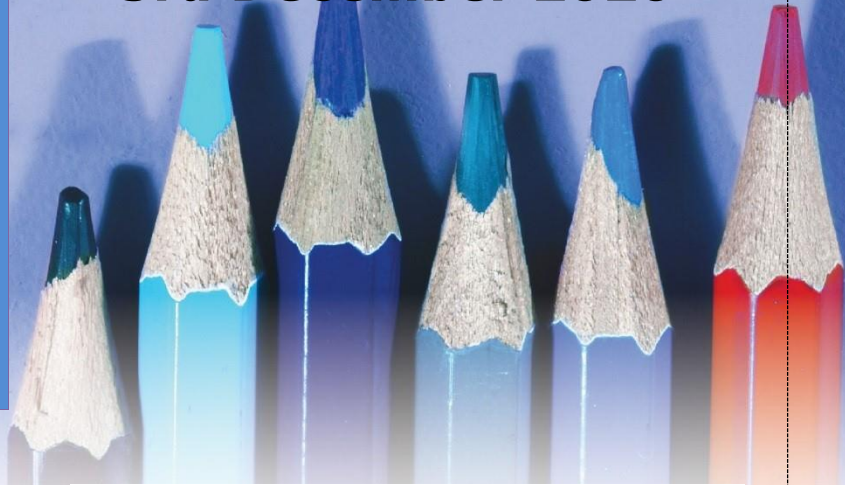
With levels of COVID-19 being so high, and particularly so in the local area, we are unable to make changes to any of our systems and processes at the moment. As one of the very few schools who have not yet had to close to some or all pupils we just cannot make any changes right now that might compromise this whilst high infection rates are so high.

That said, we continue to review our Risk Assessments regularly and when it is safe to do so the school will adapt systems, including the start and end of the school day arrangements. In the meantime we continue to do our very best to mitigate the risk of infections in school which might in turn result in children and staff being sent home for up to 14 days to self isolate, so thank you for your ongoing vigilance and patience

Fingers crossed for a smooth fortnight in the run up to Christmas.

Please keep safe and well.  
Mrs Siân Oustayiannis – Headteacher

3rd December 2020



### INFORMATION FOR PARENTS Warwickshire Family Information Service



The Warwickshire Family Information Service is a great source of information and is brilliant for pointing you in the right direction if you need help.

<https://www.warwickshire.gov.uk/childrenandfamilies>

They have a Facebook page too:

<https://www.facebook.com/WarwickshireFIS>

You can sign up for their newsletter here:  
<https://mailchi.mp/warwickshire/familyinfoservice>

### COMPASS School Health Newsletter

<https://www.telford-inf.warwickshire.sch.uk/web/letters/316013>

### WARWICKSHIRE COUNTY MUSIC SERVICE NEWSLETTER

<https://www.telford-inf.warwickshire.sch.uk/web/letters/316013>



## CHRISTMAS DATES - REMINDERS

**Friday 4<sup>th</sup> to Thursday 17<sup>th</sup> - SOCKS IN THE BOX**

The poster is set against a light pink background. On the left is a red postbox with a white top and a sign that reads 'Helping Hands' and 'LWS NIGHT SHELTER'. In the center is a green Christmas tree with yellow and red ornaments and a yellow star on top. At the bottom are four pairs of colorful socks (blue, green, and yellow).

Instead of sending Christmas cards to your child's class mates this year we invite you to put...

# SOCKS IN THE BOX

Telford Infant School will be supporting a collection of new men's & women's warm socks to donate to Leamington's homeless charities. Save some trees, your time & help someone in need.

The box will be in the infant playground under the shelter until the 17th Dec.

We're aiming to get over 100 pairs!

Thank you very much to Ellis's Mummy for arranging this for us again this year.



**Monday 14<sup>th</sup>  
CHRISTMAS DINNER**

**Christmas Menu**

Served with  
Crispy Roast Potatoes  
Garden Peas and Baby Carrots

(v) Ice Cream  
or  
(v) Homemade Chocolate Cracknel Bauble

Selection of Drinks

**Roast Turkey Breast Fillet, Sausage & Bacon Roll, Sage & Onion Stuffing and Gravy or**

**(v) Roast Quorn Fillet, Sage & Onion Stuffing and Gravy**

Season's Greetings from The Nutrigang and everyone at Educaterers Ltd.

educaterers A FOOD STORY

the NUTRI GANG

All children are welcome to have a free school Christmas dinner, even if they normally bring a packed lunch - please email the school office to inform us of this.

Children bringing a packed lunch on that day are welcome to decorate their lunch box if they would like to.

**Wednesday 16<sup>th</sup> – 4pm**  
**CLASS CHRISTMAS PERFORMANCES UPLOADED ONTO TAPESTRY**



Christmas performances will be organised into classes rather than year groups this year as we do not have access to the hall the usual way. Parents will not be asked to make or purchase costumes as access to shops has been difficult this year and performances will be shorter than usual.

**We hope that families will enjoy watching their child's class performance on Tapestry. Please note that Tapestry is not a website and cannot be accessed by the public and also that photos and videos cannot be downloaded so children's images are secure within the Tapestry platform. We have children in school whose images must not be published in the public domain so please do not clip or screenshot any images from the performances.**

**Thursday 17<sup>th</sup> – CLASS CHRISTMAS PARTIES**  
**PLEASE NOTE CHANGE TO ARRANGEMENTS FOR CLOTHING ON PARTY DAY.**

Please send your child into school in party clothes or a Christmas jumper on Party Day. Please ensure they will be warm (wear an extra indoors layer if needed and bring a coat for playtimes/lunchtime) and ensure your child is wearing their normal school shoes.



The children will enjoy party games in their classrooms and we are looking forward to Christmas cupcakes kindly donated by the PTA. Father Christmas has been invited to try out the One Way system around the school. Staff are wondering whether the children will spot him and whether he can overcome any COVID-19 restrictions to drop off presents for the classes...

## PTA CHRISTMAS EVENTS



Parent Teacher  
Association



**Look out for PTA correspondence being sent out on Monday 7<sup>th</sup>.**

### **Friday 11<sup>th</sup> – 7.30pm, ZOOM PTA GRAND CHRISTMAS RAFFLE DRAW**

**DON'T FORGET TO GET YOUR TICKETS FOR THE GRAND PTA CHRISTMAS RAFFLE!**

Please help us raise lots of money for the school by asking your friends, family, neighbours and work colleagues to buy tickets too!

Tickets are 50p each or £2.50 for a book  
More tickets are available by emailing: [pta.telfordinfants@gmail.com](mailto:pta.telfordinfants@gmail.com)  
Many thanks, Your PTA!

### **Thursday 17<sup>th</sup> to Christmas Eve TELFORD INFANT SCHOOL PTA CHRISTMAS TRAIL**

With over 70 houses having signed up to decorate their windows we are looking forward to bringing even more festive cheer to North Leamington!

With at least 4 trails for you to enjoy between 17th December and Christmas Eve we would love for as many families as possible to come and enjoy the fun. Help us find Santa's reindeer, spot the snowmen or track down the missing presents to be in with a chance of winning a prize!

Further details about how to purchase a map of the trails will be announced closer to the time. All money raised will go towards funding IT equipment for Telford Infant School.

PTA Christmas Trail Facebook page:

<https://www.facebook.com/events/134781808029814/>

### **Coming soon...**

'Guess the Weight of the Cake' competition.

Cake very kindly donated by The Cakery in Leamington.