

TELFORD INFANT SCHOOL



NEWSLETTER

Dear Parents and Carers,
It is hard to believe that we are nearly at the end of May! It has been a short half term but the children have worked exceptionally hard in all their learning and are now ready for a break before returning after the holiday for the final half term of the school year.

We have a very busy time ahead with lots of exciting learning planned and lots of transition activities to ensure that the children's move to their new class or school goes as smoothly as possible. Further details will follow.

School breaks up for half term at 3.20pm on Friday 24th May and opens to the children at 8.45am on Tuesday 4th June. The staff will be back in for a Teacher Training Day on Monday 3rd but the school will be closed to the children. Happy Half Term, Everyone.
Mrs Siân Oustayiannis Headteacher



23rd May 2019



OPTIONAL HOME LEARNING OVER THE HALF TERM BREAK

We hope that the children will have a lovely restful time over the half term break. However, we do have a couple of fun optional activities that your children may like to participate in during the holiday and full details are attached to today's correspondence. These activities are:

- + **Leamington North Cluster of schools – Healthy Eating Sculpture**
- + **Eco Bricks**

Children from all year groups are welcome to join in with these activities – we look forward to seeing how you get on!

ATTENDANCE

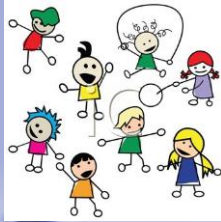
ATTENDANCE – EVERY SCHOOL DAY COUNTS!

Whole School Attendance 2018-19 up to
23rd May – 97.3%

PUCTUALITY – EVERY MINUTE COUNTS!

Does your child arrive on time?
School starts at 5 to 9

DATE FOR THE DIARY SPORTS DAY



FRIDAY 5TH JULY Years 1 & 2 – Morning Reception – Afternoon

Please note that children should be in school all day.

Parents and carers will be invited to join us and further details and exact timings will follow after half term.

YEAR 1 – SHAKESPEARE AFTERNOON FOR PARENTS

Year 1 loved exploring lots of different activities during our Shakespeare afternoon. Thanks to all the grown ups who came into school and joined in so enthusiastically.



Making lavender bags



Tasting Tudor pottage which we had made earlier in the week.



The children have also made some fantastic collages inspired by lines from *Midsummer Night's Dream*.

INFORMATION FOR PARENTS

Following discussion with parents in school we would like to share with you some of the free services available for all families with children and young people. These services cover all areas of life from housing to health and well-being and are easily accessible through face to face conversations, online or over the phone.

Please don't hesitate to get in touch if you would like further information.

Sue Corrick and Cath Errington (SEND Governors)

Sue Penton (Inclusion Lead)



We serve families with children and young people ages 0 to 25 across Warwickshire. Our role is to provide signposting, information and one-to-one support on issues including:

- Parenting support and contact arrangements
- Help with family finances
- Help with housing
- Childcare
- Special educational needs and disabilities
- Health and wellbeing
- Mental wellbeing
- Legal advice
- Counselling and bereavement
- Fostering and adoption
- Leaving care
- Education and learning
- Children and family centres
- Help with addiction and substance misuse
- Support to stop smoking
- Dealing with bullying
- Sexual exploitation and assault
- Child sexual exploitation
- Domestic abuse
- Crime, discrimination and cyber safety.

Please find more information by following the link below:

<https://www.warwickshire.gov.uk/fis>

or Online

fis@warwickshire.gov.uk

Twitter-@WarksFIS

Facebook-Warwickshire Family Information Service

Phone 01926 742274/ 08450 908044



A school nursing service for the delivery of the Healthy Child Programme 5-19, led by school nurses for the promotion, prevention and protection of children and young people's health and wellbeing. Our service is available to all Warwickshire school aged children and young people from 5-19 years old (up to 25 years old for people with special educational needs).

How the service can help you

We provide health and advice on a range of health topics, which we can share with you:

- Individually, face to face or by phone
- In group workshops
- Via our confidential parent / carer text messaging service

Contact us if you need support as a child / young person with:

- Healthy eating
- Dental health
- Friendships
- Bullying
- Anxieties about changing schools

Contact us if you need support as a parent / carer with:

- Parenting
- Behaviour
- Fussy eating
- Sleep
- Continence
- Referral onto additional services
- Support for young people on topics such as:
 - Emotional wellbeing including stress and anxiety
 - Relationships

For more information and access to the free downloadable referral form:

<https://www.compass-uk.org/services/warwickshire-school-health-wellbeing-service/>



Access to support for well-being through a web based tool.

The Dimensions Tool is a web based app that will help you to find well-being support in the Coventry and Warwickshire area, this is specific to your needs, or someone else's needs. The tool will tell you about relevant advice, support and local interventions that may be helpful, after you have answered a series of questions. The Dimensions tool is free to use and has been developed in conjunction with parents and carers, referrers and our clinical staff.

For more information and to access the Dimensions tool please follow the link below:

<https://cwrise.com/dimensions-tool>



Warwickshire County Council

The Local Offer for SEND brings together information about education, health and care services for children and young people from 0 to 25 with special educational needs and disabilities.

For more information and to access the services available for young people with special educational needs and disabilities follow the link below:

<https://www.warwickshire.gov.uk/send>

Below is an example of the links available on the web page.

If you think your child has SEND >

Planning for adulthood with SEND >

Help us to improve SEND services >

A to Z of SEND services >

Support at school for those with SEND >

Social care support for those with SEND >

School travel for those with SEND >



DIARY DATES

Latest Update 23.05.19

MAY

Friday 24 th	Break up for Half Term
-------------------------	------------------------

JUNE

Monday 3 rd	INSET Day – School closed to the children
Tuesday 4 th	Children return to school
Thursday 6 th	Leamington North Football Tournament at Telford Infants
Friday 7 th	Visitors from our partner schools from Sierra Leone
Wednesday 12 th	Year 2 Learning Visit to Warwick Castle
Friday 14 th	PTA Father's Day Present Room
Tuesday 18 th 6.30pm	Welcome Meeting for parents of children starting Reception in September
Wednesday 19 th am	Stay and Play sessions for parents and children starting Reception in September
Thursday 27 th	Induction Day – children visit new classes. New Reception children also visit.
Friday 28 th	Please send in donations for PTA Summer Fair
Saturday 29 th 12noon to 2pm	PTA Summer Fair

JULY

(*Further details will follow after half term)

Tuesday 2 nd 2.30pm-3pm	Storytime visit for children starting Reception in September
Friday 5 th	*Sports Day: Morning – Years 1 and 2 Afternoon - Reception
Week commencing Monday 8 th	*Art Week
Tuesday 16 th 9.15am	*Year 2 Leavers' Performance
Wednesday 17 th 9.15am	*Year 2 Leavers' Performance
Wednesday 17 th 5pm-6pm	*Year 2 leavers' Disco
Friday 19 th	School breaks up for the summer holidays

SEPTEMBER

Monday 2 nd	Teacher Training Day
Tuesday 3 rd	School opens for children in Years 1 and 2

Follow the link below to our school website for details of term dates for 2019-20:
https://www.telford-inf.warwickshire.sch.uk/web/term_dates/316881