

## Areas to investigate

### KS2 progress

- There were no meaningful trends or differences for this measure.

### KS2 attainment

- In 2018, reading, writing and mathematics attainment of the expected standard was at or above national for prior attainment groups: middle, high.
- In 2018, 82% of pupils achieved the expected standard in reading, writing and mathematics, 18 percentage points above the national proportion. This was a statistically significant difference.

### KS1 attainment

- There were no meaningful trends or differences for this measure.

### Phonics in 2018

- A very large majority of pupils (95%) met the phonics expected standard in year 1.

### EYFS

- There were no meaningful trends or differences for this measure.

### Behaviour

- In 2017/18, the rate of overall absence (3.80%) was slightly above the national average for schools with a similar level of deprivation (3.54%).
- There were no permanent exclusions in the last three years. The national average in each of these years was zero.
- In 2016/17, there were no fixed term exclusions. The national average rate for schools with a similar level of deprivation was 0.27%. In 2016/17, there were no repeat exclusions. The national average rate for schools with a similar level of deprivation was 0.13%.

## Primary school context in 2018

**Phase of education:** Primary  
**Headteacher:** David Bradford  
**Pupils:** 477  
**Gender:** Mixed  
**Deprivation Quintile:** Lowest 20% (0.1)

**Local authority:** Plymouth  
**Admissions policy:** Not applicable  
**Ages:** 5-11  
**Denomination:** None  
**Special needs provision:**

**Ever 6 FSM %:** 10.1  
**English additional language %:** 0.3  
**SEN support %:** 8.8  
**SEN with EHC plan %:** 0.6

### Ethnicity

- The largest ethnic groups are: White - British (96.7%), White - any other White background (0.5%), Mixed - White & Black African (0.5%), Mixed - White & Asian (0.5%), Mixed - any other mixed background (1.1%).
- This school has 5 out of 17 possible ethnic groups. The average number of groups for this phase of education is 9.

### Number on roll

- The school was in the top 20% of all schools for the number of pupils (477).
- There was a larger than average increase in the total number of pupils, from 426 pupils in 2017 to 477 in 2018.

### Girls

- The school was in the lowest 20% of all schools for the proportion of girls (45.7%).

### Disadvantaged

- There was one child looked after in the school.

### English as an Additional Language

- The school was in the lowest 20% of all schools for the proportion of EAL (0.3%).

**Notes:** Context sentences provide background information for inspectors. This is historic data for pupils as of the January 2018 census. For example year 10 in 2018 is the school's current year 11 cohort. Ethnicity and CLA sentences appear for every school. For further information on methodology see [www.gov.uk/government/collections/using-ofsted-inspection-dashboard](http://www.gov.uk/government/collections/using-ofsted-inspection-dashboard)

## Primary school context 2018

### Special Educational Needs

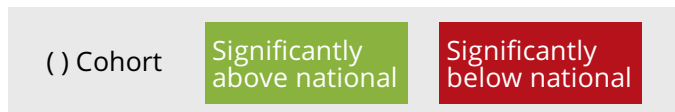
- There was nothing significant to report for this group.

### Prior Attainment

- Pupil prior attainment was well above the national comparator for the following: Reading (year 1, year 4), Writing (year 4), Mathematics (year 4)

# Relative progress for the past three years

Progress quintiles based on rank of progress score

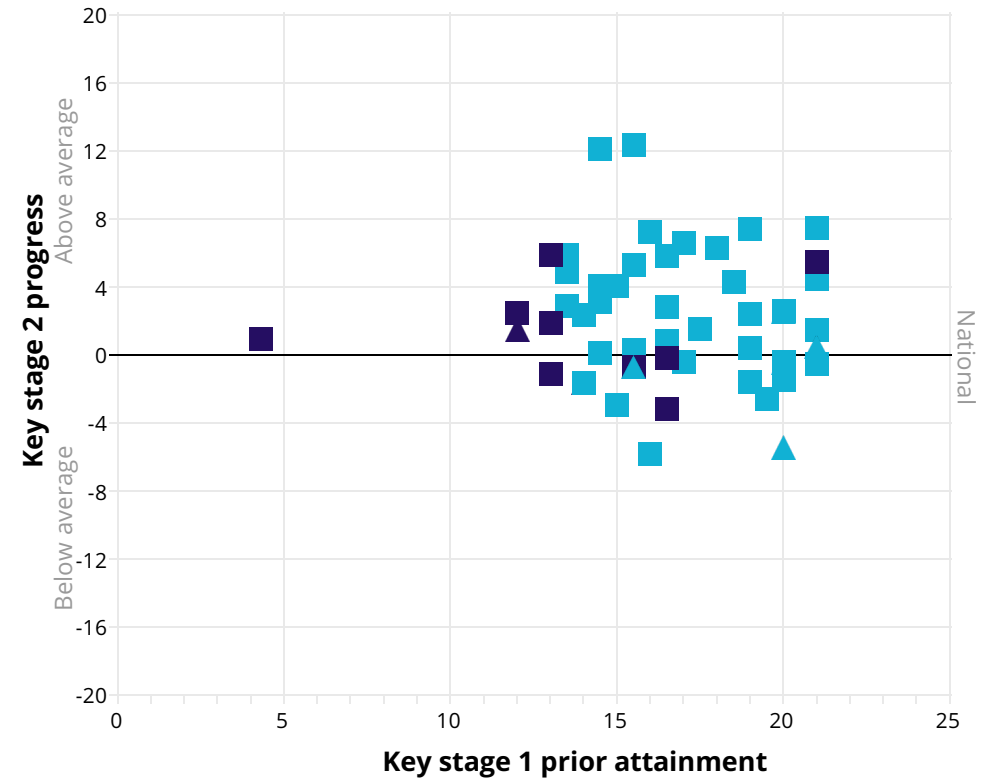
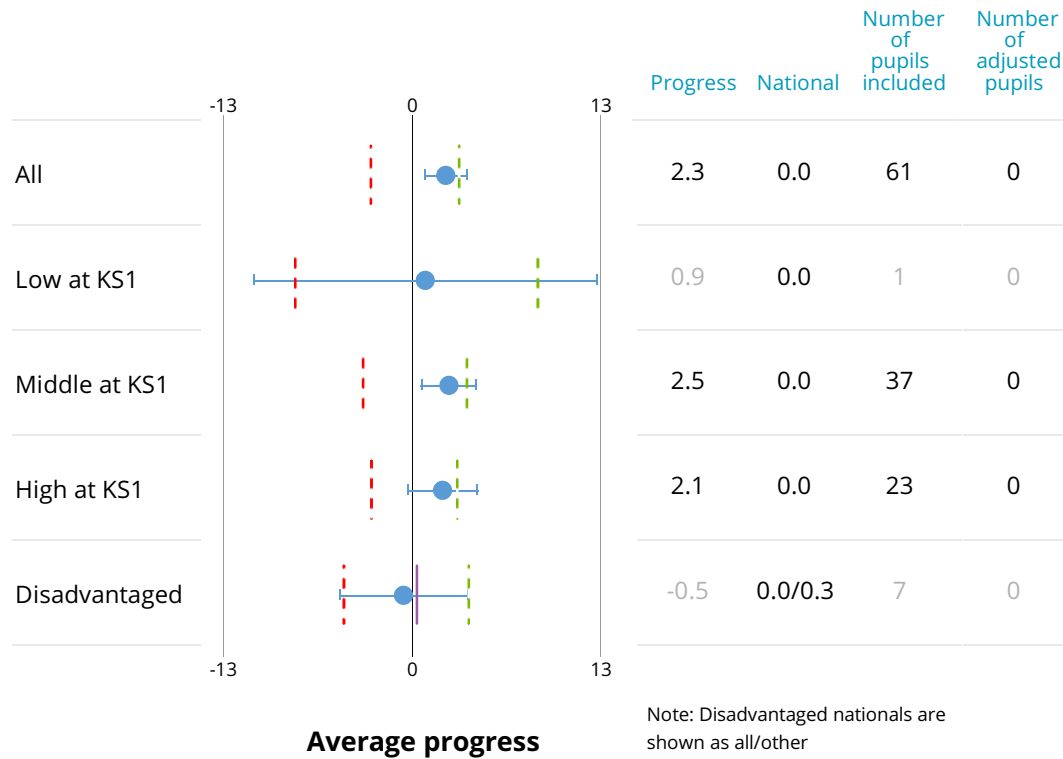


			Reading					Writing					Mathematics							
			Bottom 20%					Bottom 20%					Bottom 20%							
			Q5	Q4	Q3	Q2	Q1	Q5	Q4	Q3	Q2	Q1	Q5	Q4	Q3	Q2	Q1			
Overall	2016	(57)						(57)							(57)					
	2017	(61)						(61)							(61)					
	2018	(61)						(61)							(61)					
Low at KS1	2016	(4)						(4)						(4)						
	2017	(1)						(1)						(1)						
	2018	(1)						(1)						(1)						
Middle at KS1	2016	(31)						(31)						(31)						
	2017	(33)						(33)						(33)						
	2018	(37)						(37)						(37)						
High at KS1	2016	(22)						(22)						(22)						
	2017	(27)						(27)						(27)						
	2018	(23)						(23)						(23)						
Disadvantaged	2016	(9)						(9)						(9)						
	2017	(8)						(8)						(8)						
	2018	(7)						(7)						(7)						

**Notes:** Statistical significance for disadvantaged pupils is against the national for other pupils. Change in methodology or calculations is indicated by a dotted line. Quintiles for 2018 are based on adjusted progress scores. Previous years are based on unadjusted. Significance is only flagged for cohorts greater than 10. For cohorts of 10 or fewer, information is greyed out. For further information on methodology see [www.gov.uk/government/collections/using-ofsteds-inspection-dashboard](http://www.gov.uk/government/collections/using-ofsteds-inspection-dashboard)

# Reading progress in 2018

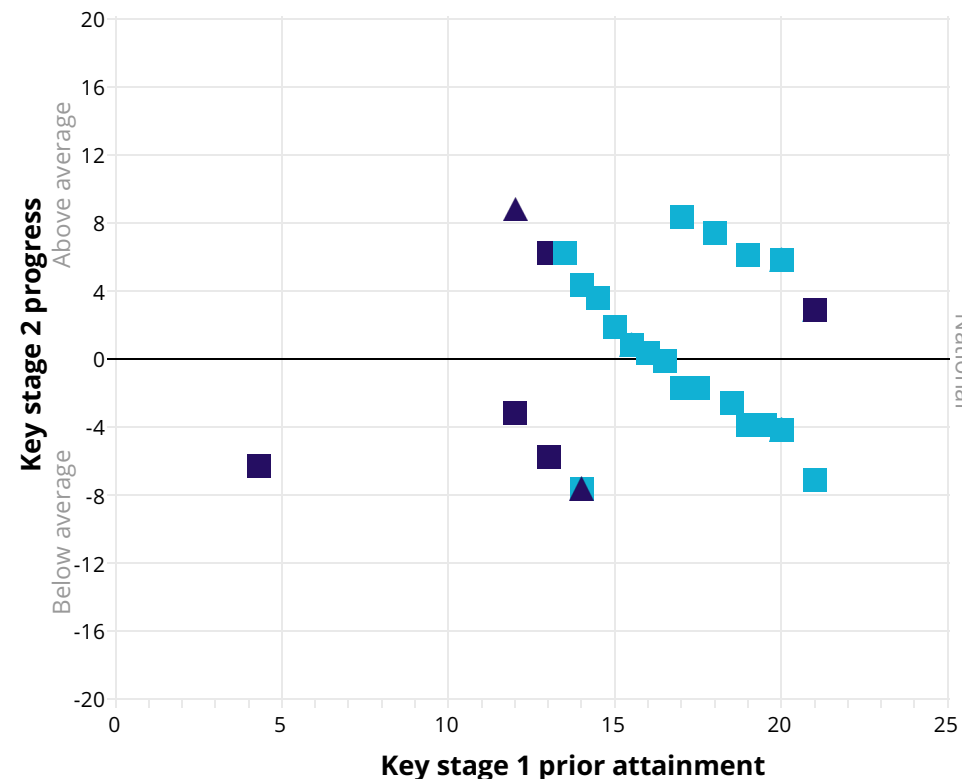
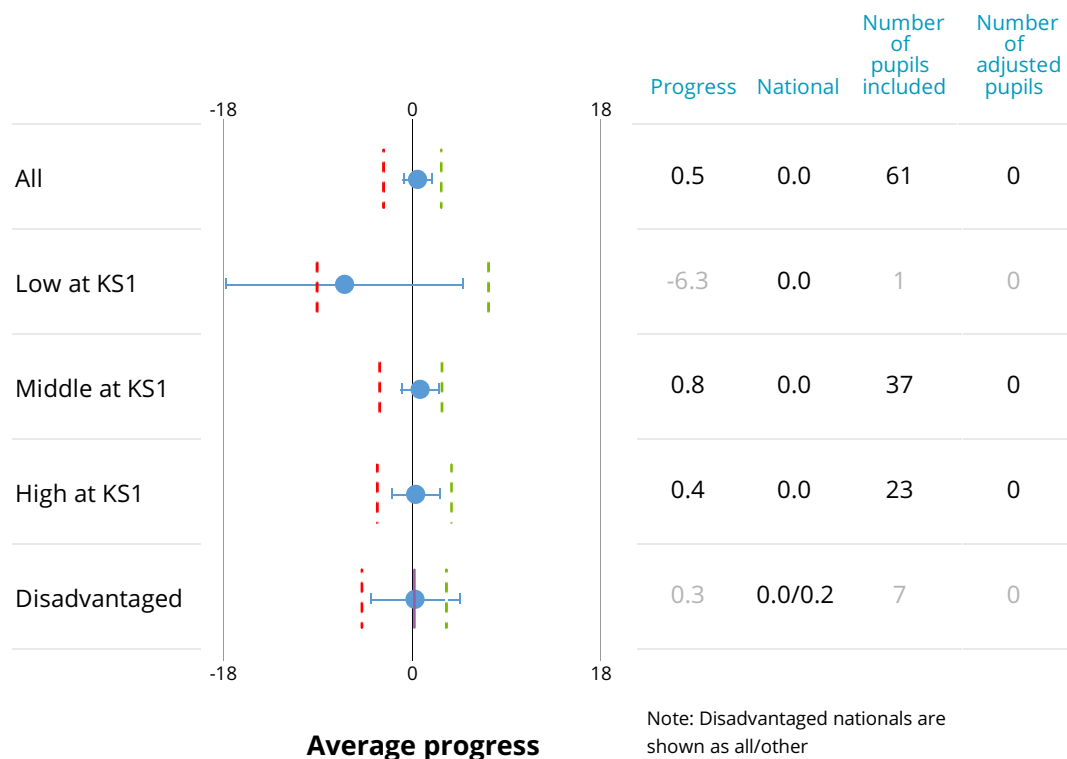
# Reading progress scatterplot



**Notes:** Progress measures are based on adjusted progress scores. Significance is only flagged for cohorts greater than 10. For cohorts of 10 or fewer, information is shown in grey. Prior attainment is based on overall KS1 attainment. For further information on methodology see [www.gov.uk/government/collections/using-ofsteds-inspection-dashboard](http://www.gov.uk/government/collections/using-ofsteds-inspection-dashboard)

# Writing progress in 2018

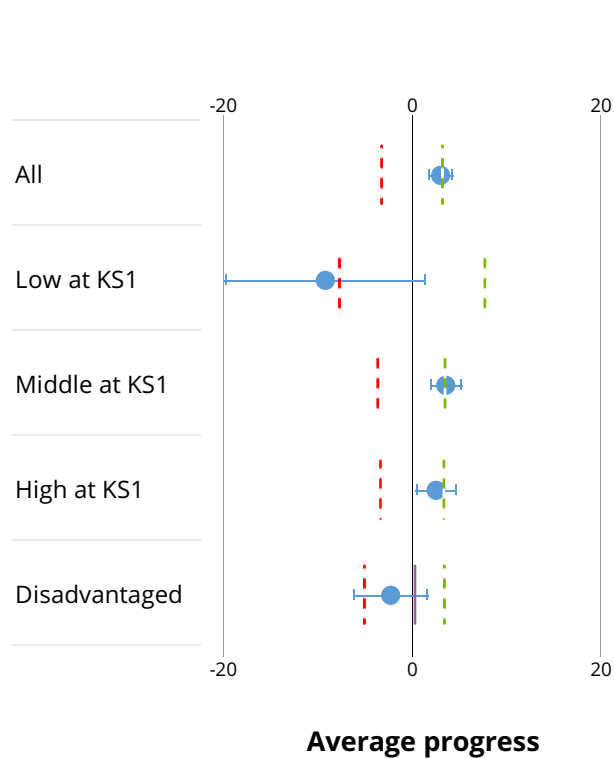
# Writing progress scatterplot



**Notes:** Progress measures are based on adjusted progress scores. Significance is only flagged for cohorts greater than 10. For cohorts of 10 or fewer, information is shown in grey. Prior attainment is based on overall KS1 attainment. For further information on methodology see [www.gov.uk/government/collections/using-ofsteds-inspection-dashboard](http://www.gov.uk/government/collections/using-ofsteds-inspection-dashboard)

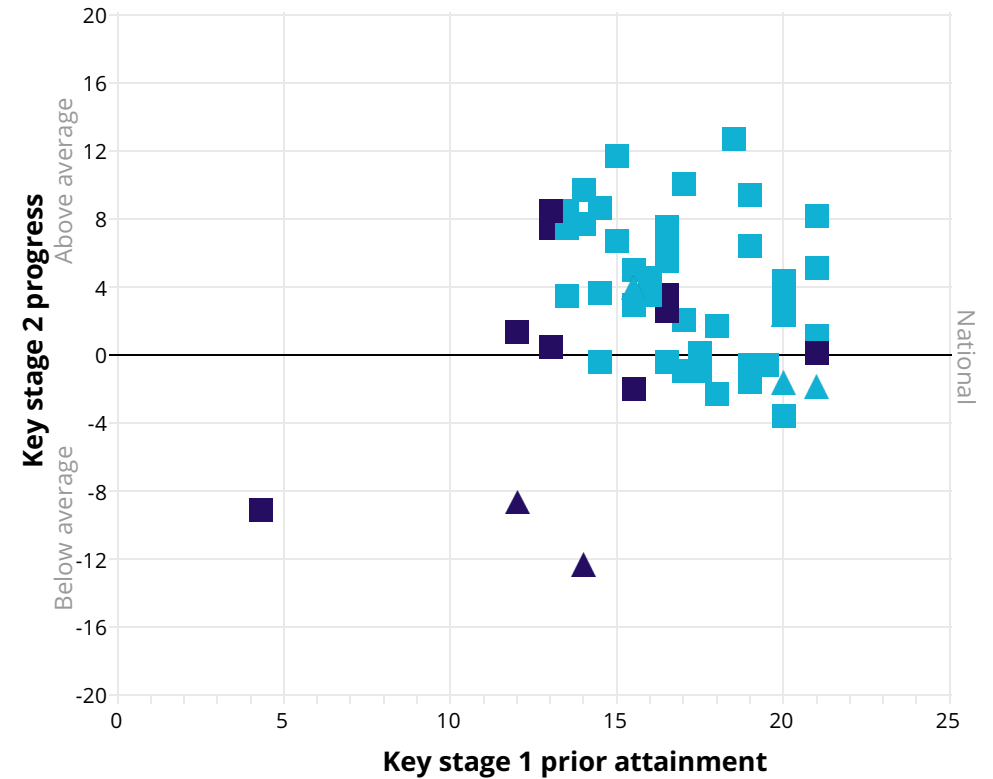
# Mathematics progress in 2018

# Mathematics progress scatterplot



Progress	National	Number of pupils included	Number of adjusted pupils
3.0	0.0	61	0
-9.1	0.0	1	0
3.6	0.0	37	0
2.6	0.0	23	0
-2.3	0.0/0.3	7	0

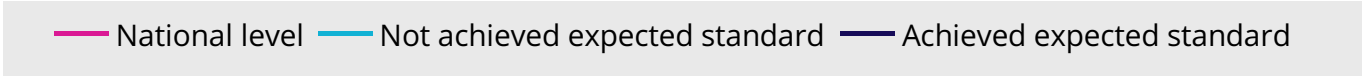
Note: Disadvantaged nationals are shown as all/other



**Notes:** Progress measures are based on adjusted progress scores. Significance is only flagged for cohorts greater than 10. For cohorts of 10 or fewer, information is shown in grey. Prior attainment is based on overall KS1 attainment. For further information on methodology see [www.gov.uk/government/collections/using-ofsteds-inspection-dashboard](http://www.gov.uk/government/collections/using-ofsteds-inspection-dashboard)

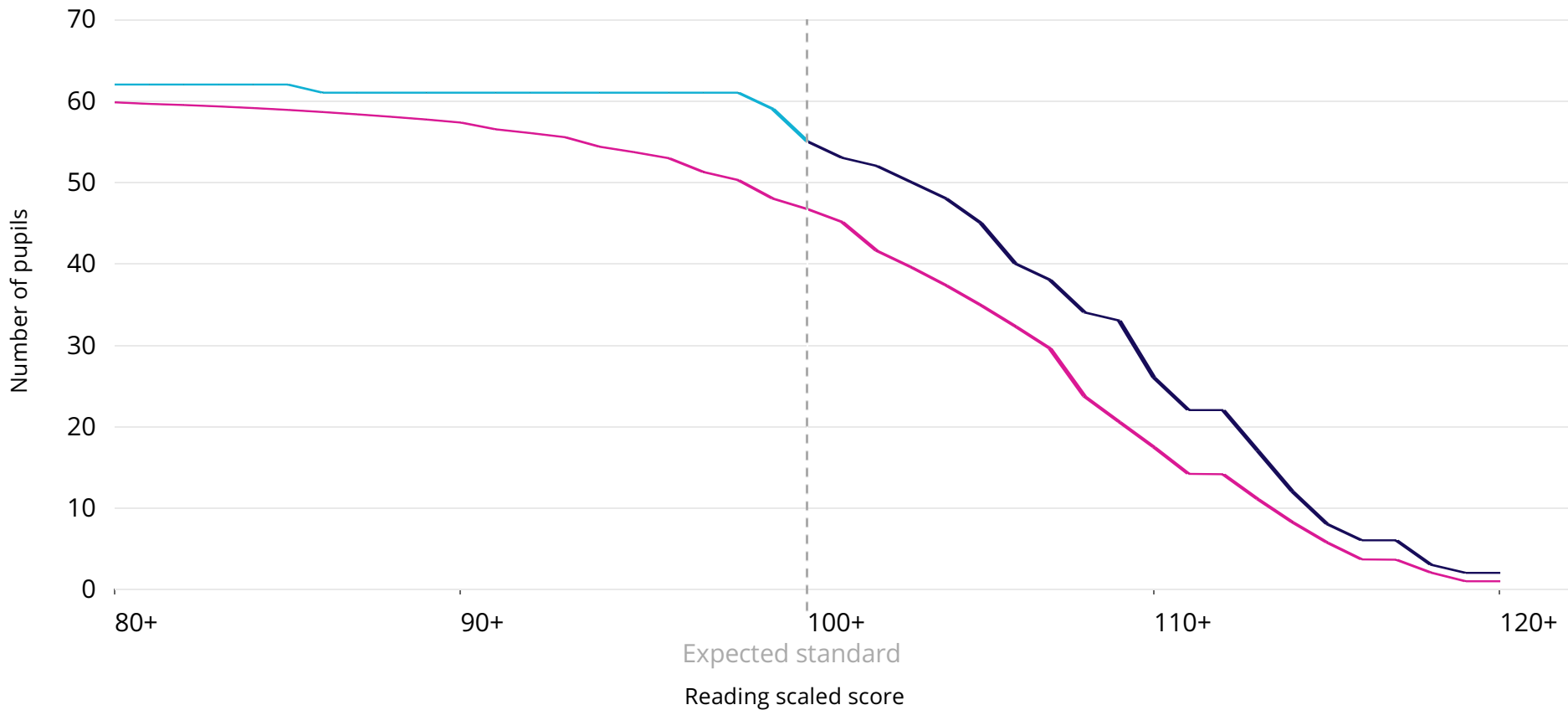
# Reading scaled scores 2018

This chart shows the distribution of total marks achieved by pupils in the school compared to the national.



Cohort = 62 One pupil relates to 1.6 percentage points.

In 2018, 89% of pupils achieved the expected standard, 13 percentage points above the national. This was a statistically significant difference.



**Notes:** The plotted national line is the national reading percentage multiplied by the school reading attainment cohort at each average scaled score interval. For further information on methodology see [www.gov.uk/government/collections/using-ofsteds-inspection-dashboard](http://www.gov.uk/government/collections/using-ofsteds-inspection-dashboard)



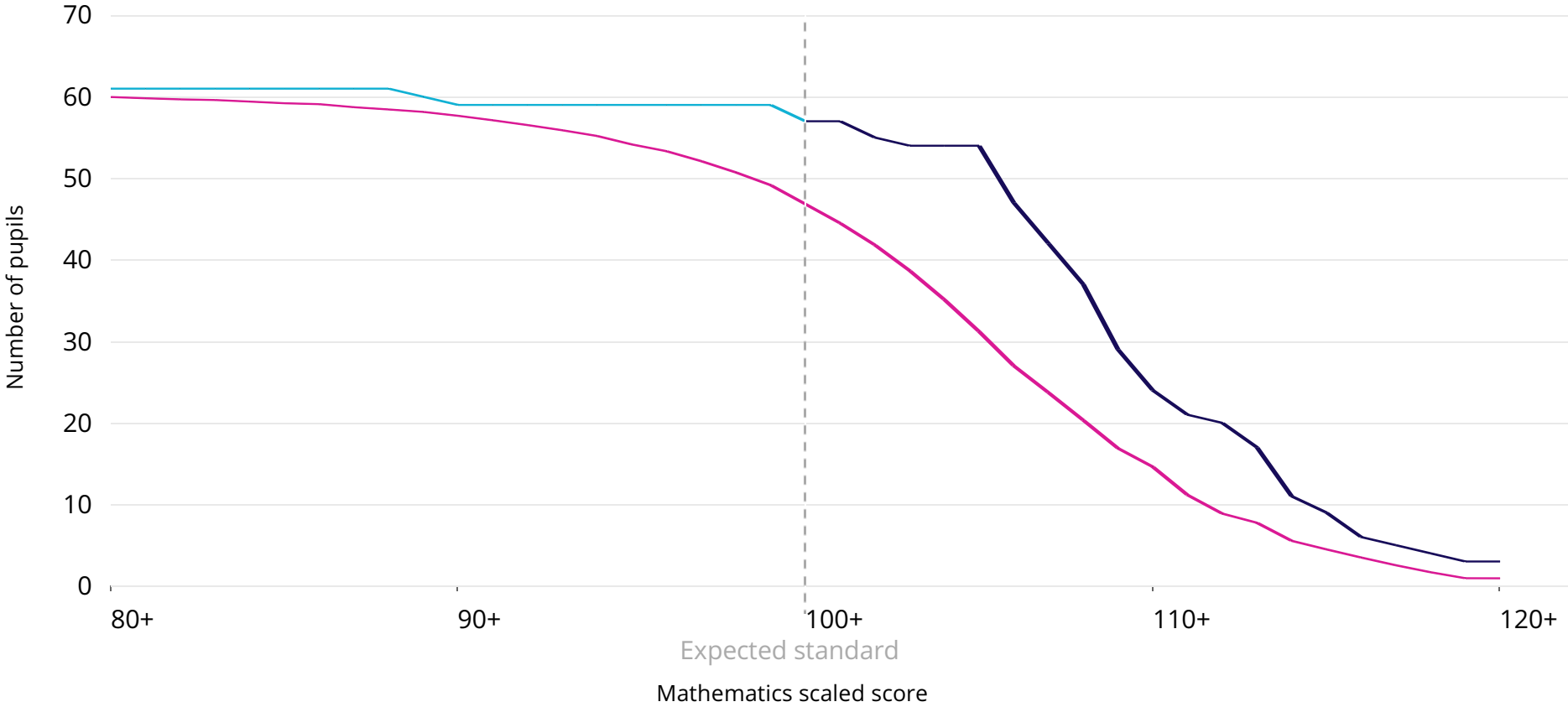
# Mathematics scaled scores 2018

This chart shows the distribution of total marks achieved by pupils in the school compared to the national.

— National level  
 — Not achieved expected standard  
 — Achieved expected standard

Cohort = 62   One pupil relates to 1.6 percentage points.

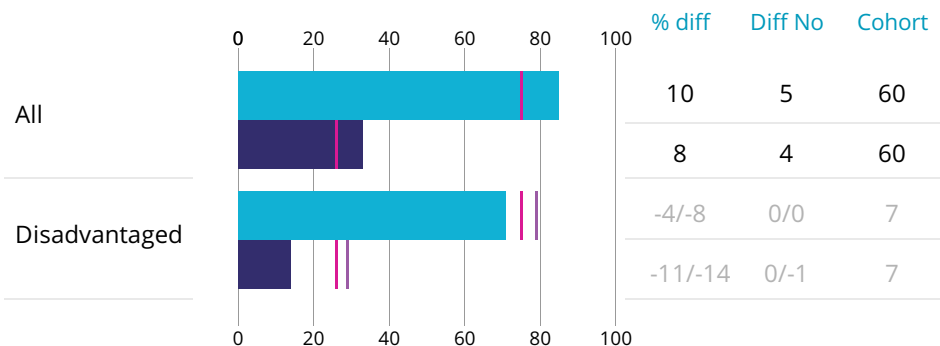
In 2018, 92% of pupils achieved the expected standard, 16 percentage points above the national. This was a statistically significant difference.



**Notes:** The plotted national line is the national mathematics percentage multiplied by the school mathematics attainment cohort at each average scaled score interval. For further information on methodology see [www.gov.uk/government/collections/using-ofsteds-inspection-dashboard](http://www.gov.uk/government/collections/using-ofsteds-inspection-dashboard)

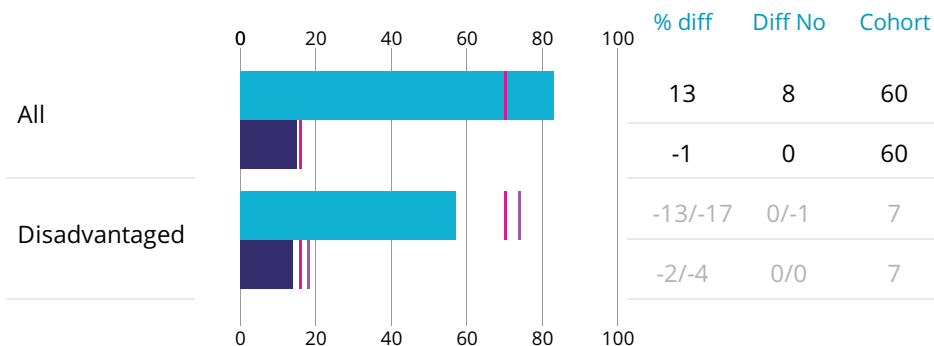
## Reading

Expected+ % Greater depth % National for all pupils Other national



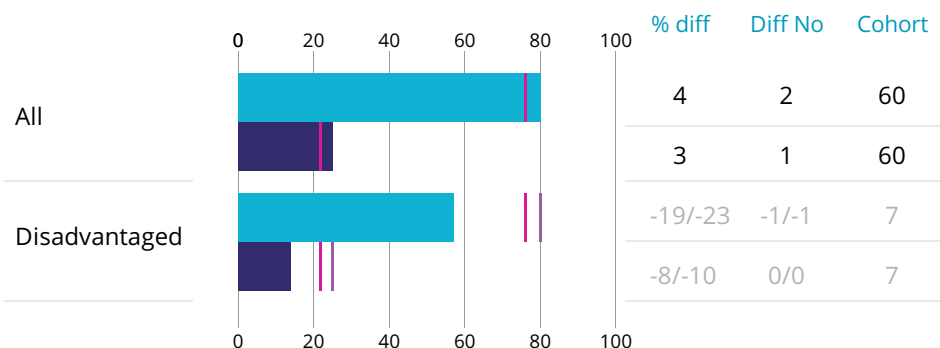
## Writing

Expected+ % Greater depth % National for all pupils Other national



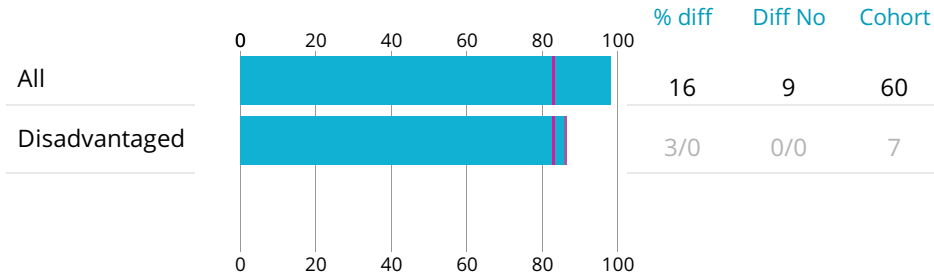
## Mathematics

Expected+ % Greater depth % National for all pupils Other national



## Science

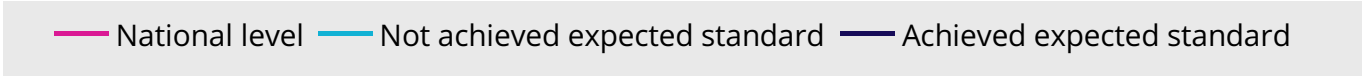
Expected+ % National for all pupils Other national



**Note:** 'Diff no' value shows the number of pupils that the difference between school and national represents, and is always rounded down to a whole number. Disadvantaged nationals are shown as all/other (other relates to pupils who are not defined as disadvantaged). For science the only outcome of the teacher assessment was whether pupils met the expected standard. For further information on methodology see [www.gov.uk/government/collections/using-ofsteds-inspection-dashboard](http://www.gov.uk/government/collections/using-ofsteds-inspection-dashboard)

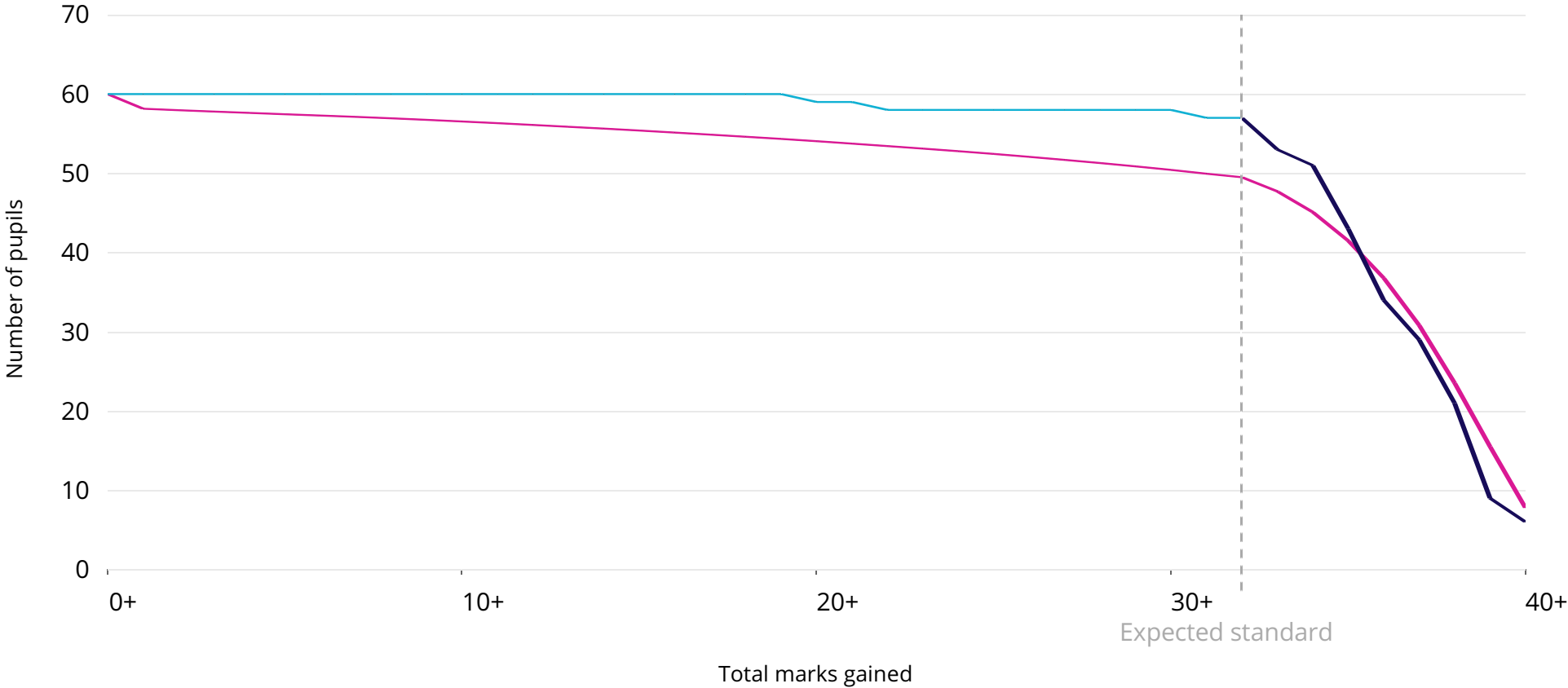
# Year 1 phonics marks 2018

This chart shows the distribution of total marks achieved by pupils in the school compared to the national.



Cohort = 60 One pupil relates to 1.7 percentage points.

In 2018, 95% of pupils achieved the expected standard, 12 percentage points above the national proportion. This was a statistically significant difference.



**Notes:** The plotted national line is the national phonics attainment percentage at each phonics mark multiplied by the whole school phonics attainment cohort. The expected standard for phonics is 32+. For further information on methodology see [www.gov.uk/government/collections/using-ofsted-inspection-dashboard](http://www.gov.uk/government/collections/using-ofsted-inspection-dashboard)