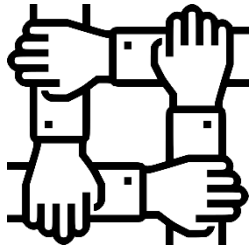




# A CHARTER FOR INCLUSIVE RELATIONSHIPS, AND HEALTH EDUCATION (RHE)

St Chad's CofE Nursery and Infant School commits to providing an inclusive Relationships and Health Education (RHE), which will enable all pupils to flourish.

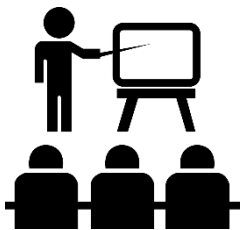
**As part of Derby City Central Cluster of schools we commit to:**



Working in partnership and building positive relationships with parents and carers

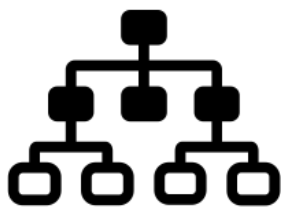
Annual consultation with parents and carers in the development and delivery of the RHE curriculum

Working in partnership and gaining the views of identified community organisations



Delivering a high quality, age appropriate RHE curriculum

Creating an RHE curriculum, which is adapted and relevant to our context, that focusses on giving the pupils the knowledge they need to make informed decisions about their wellbeing, health and relationships



Creating and sharing a RHE curriculum framework and provide clarity on how it is organised and delivered

Creating an RHE curriculum based on accurate information, including about the law and legal rights

