



Welcome

A meeting to provide you with more details about the plans for Keskowethyans Trust to join Southerly Point Co-operative Trust.

A chance to ask questions and address any potential concerns



- 4 schools with an Executive Head:
 - Coverack, Grade Ruan, Manacaan, St Keverne
- 1 Church School
- Approx 200 pupils on roll
- All schools are graded Good by Ofsted



- 15 schools: 3 Executive Heads; 8 Heads
- Breage, Crowan, Cury, Garras, Godolphin, Halwin, Helston Community College, Landewednack, Mullion Primary, Mullion School, Parc Eglos, Porthleven, Sithney, Trannack, Wendron
- 3 Church Schools
- Approx 3,600 pupils
- 3 Outstanding, 11 Good, 1 Requires Improvement
- West Cornwall Teaching School

What are the benefits of being in a Trust?

For Keskowethyans:

Staff/Team

- Wider supportive network,
- Skills development, knowledge & expertise
- More opportunities across a larger trust
- Sharing resources and teams

Pupils

- Staff support network & resources
- More enriching opportunities
eg. Maths groups, literacy festival
Sporting events, Year 6 transitions
- Wider pupil interactions



What are the benefits of being in a Trust?

For Southerly Point Co-operative:

Staff/Team

- Local staff network for :-
Literacy, Numeracy, Special Educational Needs, Safeguarding, Early Years, Subject Support, Leadership, Secretaries, Caretakers
- Leadership development – coaching, peer support
- Staff secondments
- Peer support for Heads
- Joint visits and projects for pupils

Pupils

- Staff support network & resources
- Joint visits and projects for pupils
- More enriching opportunities
- Wider pupil interactions

Everyone

- Shared data – *identify patterns, shared training, sharing ideas and working together*
- Shared procurement resulting in cost savings
- Sharing resources, equipment and staff
- Consistent approaches
- Local training for staff and governors



Maintaining school individuality



Smaller schools feel less vulnerable by being part of a bigger Trust and benefit from opportunities they can't afford on their own

Staff feel that they have been supported well through the network of lead teachers within the MAT. This has provided the opportunity for staff development and quality CPD

We are a supportive and caring group of schools who work together well for the best interests of the children across our Trust.

As a Headteacher, I feel very supported by my hub leader, the MAT CEO and my fellow headteachers.

Being part of the Trust has consolidated our cooperative values, particularly solidarity and caring for others.

Teachers have visited other settings and have had staff from other schools to come to visit them. This has led to changes in teaching and learning not just in their classrooms but sometimes across the school.

Schools have come together to share resources, moderate children's work and provide training within the trust. This has facilitated the expertise of skilled teachers to enable us to maintain high standards throughout.

Since joining the MAT our schools have been able to work together much more closely. We have benefited from targeted support from experts in our partner schools and have been able to share good practice with colleagues.

We have a clear leadership structure and this has enabled all schools to have equal opportunities for provision and support

Being in the trust has enabled a cohesion between schools, allowing us to share the best practice to benefit the children we teach.

We've got to know staff from other schools and have been able to share our achievements and our challenges. There is a strong sense of support and camaraderie amongst us all.

I love being part of the bigger partnership, there is always someone you can turn to for advice or coaching. There are so many opportunities to share good practice, work with experienced colleagues and to be part of one big, amazing team!

Pupils have really benefitted for working with pupils from other schools.
The More Able Maths group is a great example of this.

Staff feel that they have been supported well through the network of lead teachers within the MAT. This has provided the opportunity for staff development and quality CPD

The West Cornwall Teaching School offers a multitude of opportunities for staff to progress, as well as providing CPD. SLEs, LLEs and NLEs work with schools to provide training, coaching, mentoring.

What's different about Southerly Point?

As a 'co-operative' our work is driven and underpinned by co-operative values and principles:

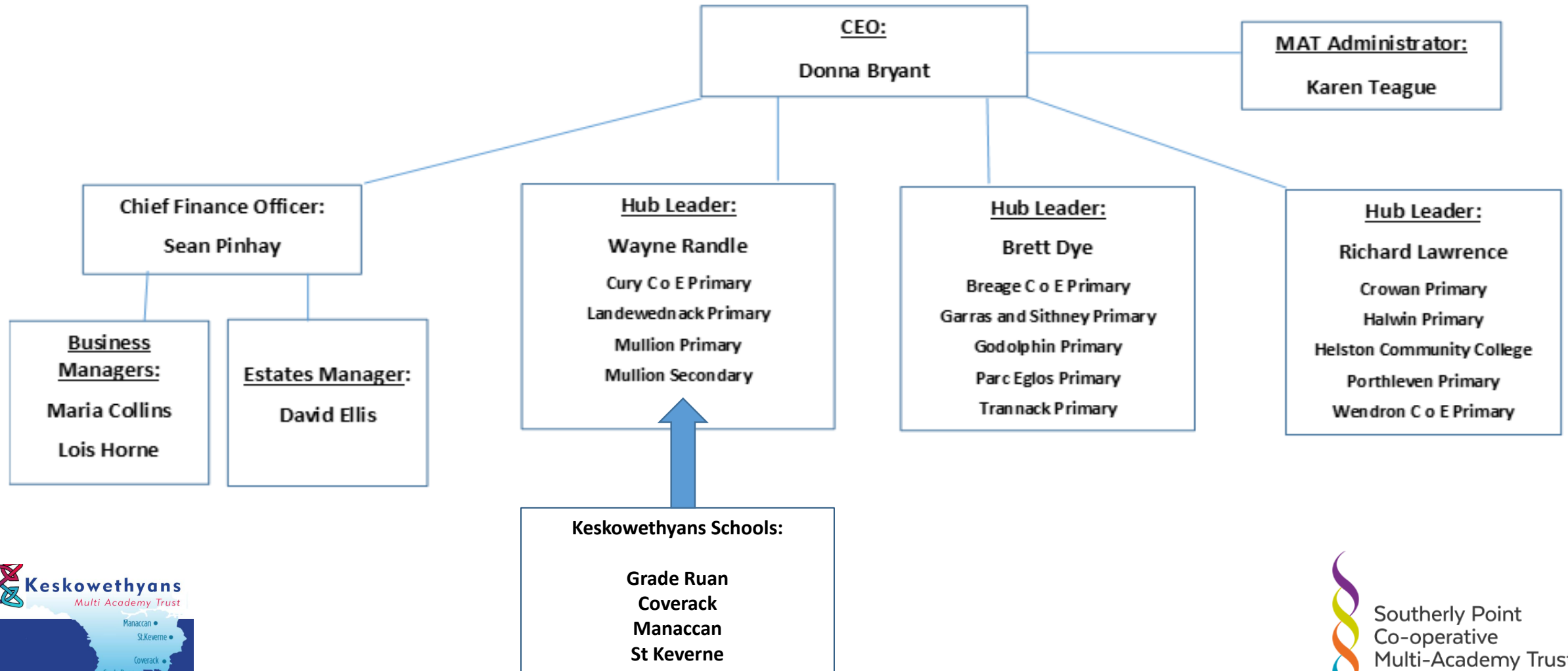
self-help, self-responsibility, equity, equality, democracy, solidarity, honesty, openness, social responsibility and care for others

- Forums allow everyone to have a voice
- We're larger and so have more capacity
- Hub Leaders support a hub of schools: 1 x Lizard; 2x Helston
- A Teaching School - support for training and development of all staff
- Annual School Condition Allocation Grant for development of the school buildings



Southerly Point Co-operative Multi-Academy Trust - Structure

Executive Team:



Executive Functions

CEO

Hub Leaders

Heads

Governance Function

Members

Trust Board

Standards Committee

Co-operative Spirituality and Well-Being Committee

Panels: pay; disciplinary; appeals etc

Finance & Resources Committee

Election of Forum Member

1 elected representative from each hub per committee/panel

Forum

Local Governing Body

Key Roles

Head Teachers

Teaching & Learning
Curriculum, Standards
Behaviour & Wellbeing
Community relationships

Board of Trustees

Vision, Ethos, Strategic Direction
Hold CEO to account for performance of the Trust
Effective financial management

CEO & Hub Leaders

Provide challenge & support to heads
To ensure Excellence for children &
Consistency across all schools

Local Governing Body (Delegated)

Monitoring to ensure schools act appropriately & achieve objectives
Nominated Governor supports Trust panels
One Governor per Hub serves on Trustee committees

Central Services

Finances
Premises
Health & Safety
HR

School Forum

Enable pupils, parents, staff, the community and previous pupils opportunity to give their views and make suggestions to the school



How will Keskowethyan structures be incorporated ?

- 2 Keskowethyans Directors will join Southerly Point Co-operative Trust Board for continuity
- The remaining board will become the Local Governing Body over the 4 schools and may be strengthened initially by members of the Partners in Learning or by election ensuring skill sets are covered
- Keskowethyan Schools will be part of the Lizard Hub with Cury, Landewednack, Mullion P and Mullion S
- The Hub Leader is Wayne Randall (Head at Mullion School)



Will there be lots of change ?

- Your schools will keep their unique ethos
- Your staff will continue to work in your trust schools – over time this might change
- Uniforms will stay the same
- Each school will retain its name but will be part of Southerly Point Co-operative rather than Keskowethyans
- Some policies which have to operate across the Trust will change; other local policies in your school will stay the same, subject to the normal cycle of reviews





Any questions?