

Parental controls guide

Samsung TVs parental controls

Parental Controls information

Type of guide

Smartphones and other devices

Features and Benefits

Learn how to use the inbuilt parental controls in Samsung TVs to help manage what content your children have access to on your TV.

What specific content can I restrict?



Apps Access



Browser Access



Innapropriate content



Media streaming

What do I need?

A Samsung smart TV

Samsung TVs parental controls

Step by step guide

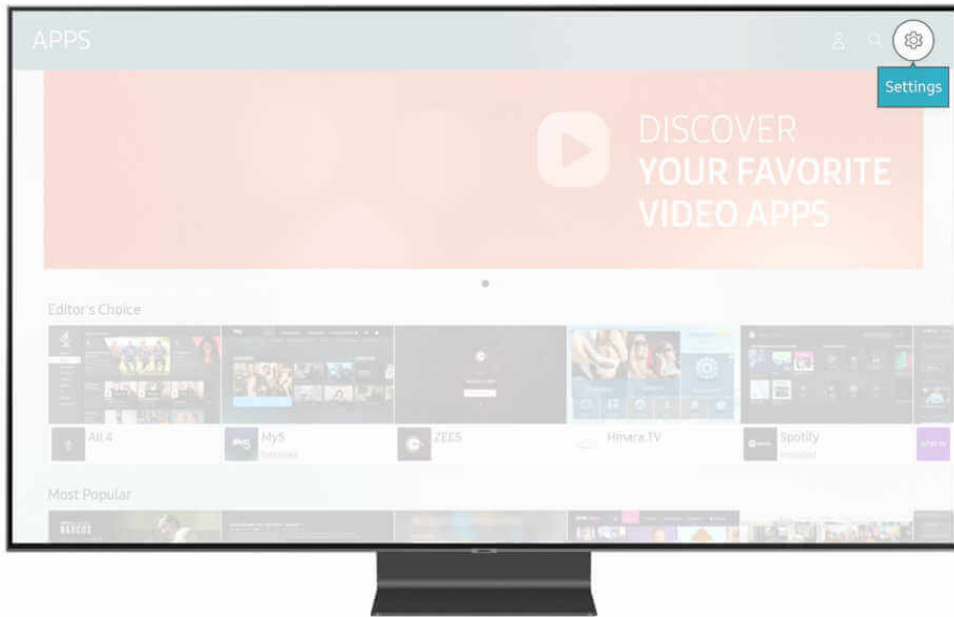
1

Steps to set controls across all Samsung Smart TVs How to lock apps: 1. Select APPS on the EDEN Bar 2. Select Settings in App screen 3. Select the app you would like to lock. Then click down on the menu using the remote and select lock. You will be asked to type in your pin. 4. The app is now locked shown by the padlock icon. You will now need your pin to open the app.

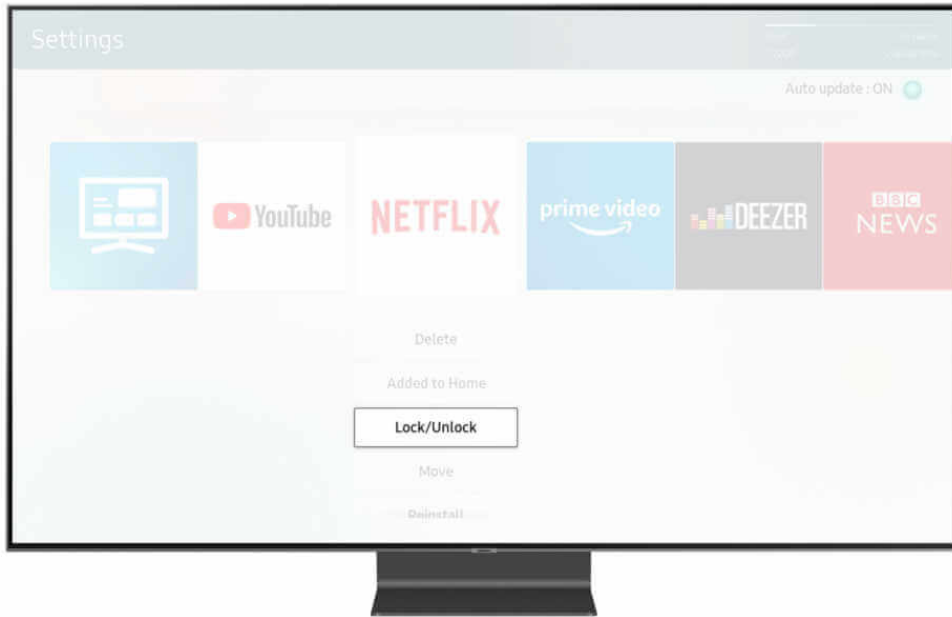
1



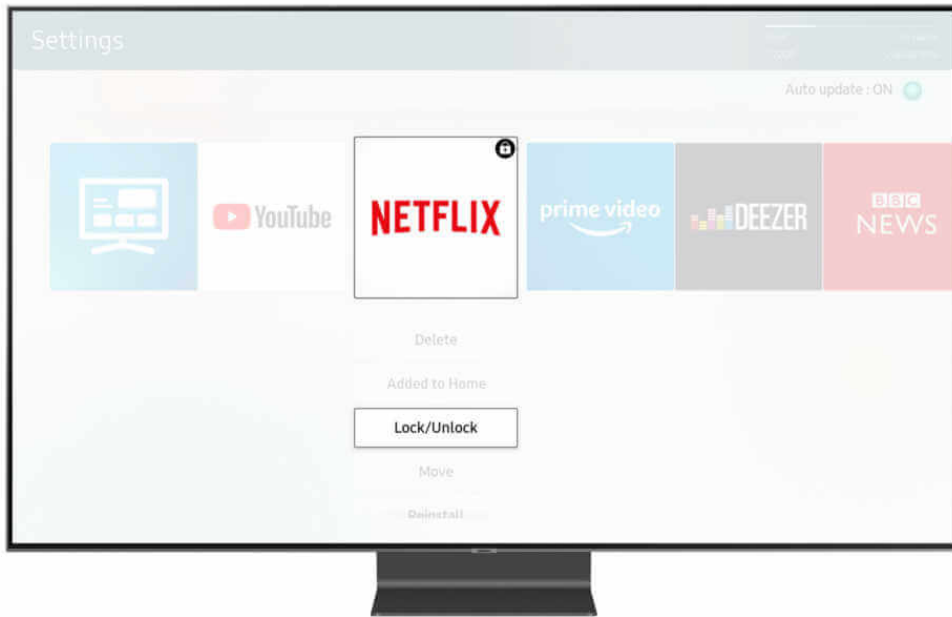
2



3



4



Samsung TVs parental controls

Step by step guide

2

Steps to set controls across all Samsung Smart TVs How to set a Pin: 1. Open the Setting menu. Note: This is also requested during installation 2. Click down to General 3. Select System Manger and then select Change PIN 4. Enter in your new 4 digit PIN Twice 5. Your PIN has now been successfully changed

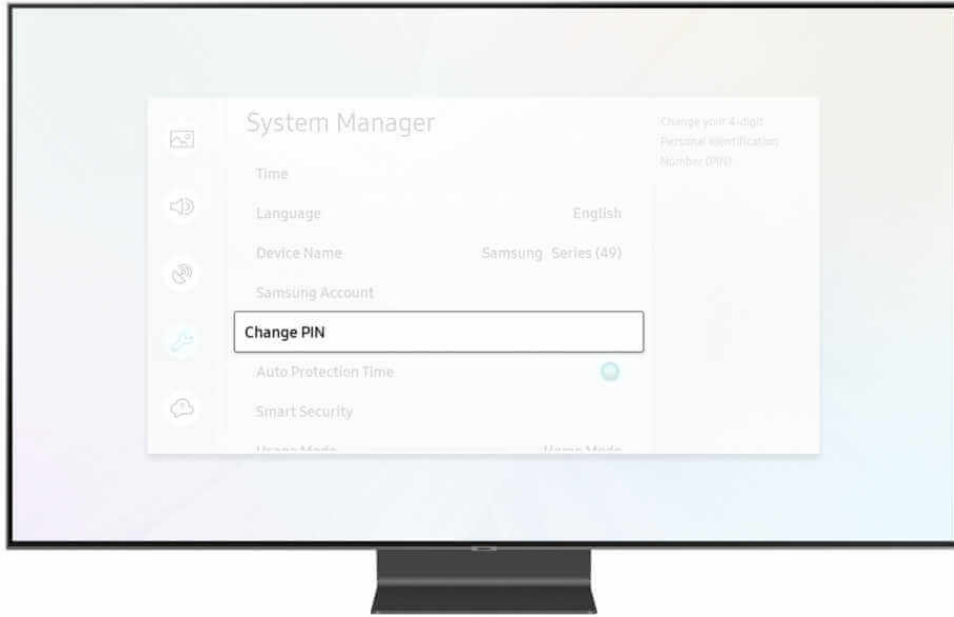
1



2



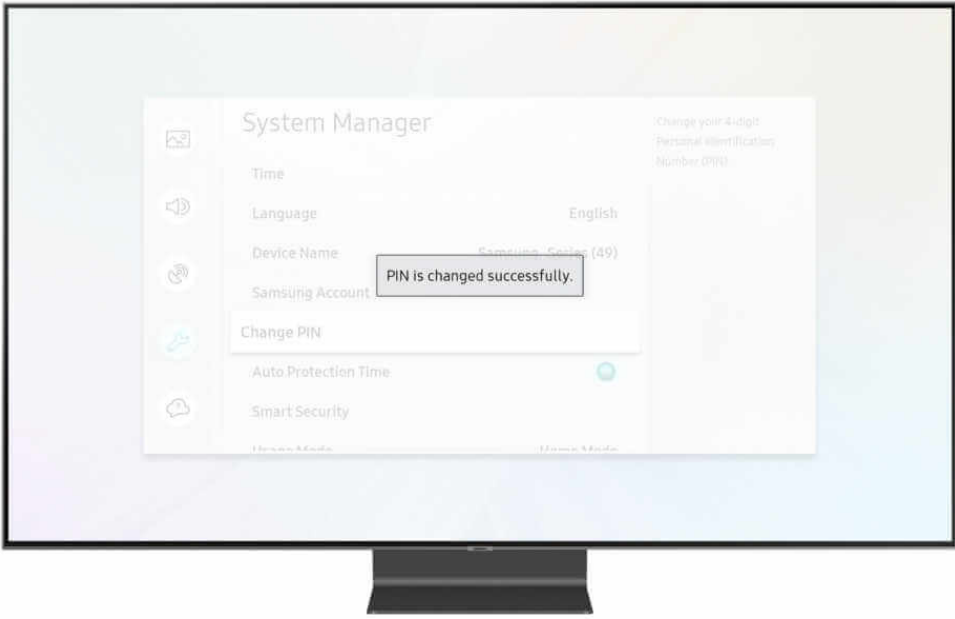
3



4



5



Samsung TVs parental controls

Step by step guide

3

Steps for Freeview or Freesat users where aerial is plugged into TV directly Part 1 -Ensure that your TV source is to set TV 1. Select the Home Button on the remote control to reveal the EDEN Bar. 2. Scroll along the bar to the left and select Source. 3. Then select TV as the source option

1



2



3



Samsung TVs parental controls

Step by step guide

4

Steps for Freeview or Freesat users where aerial is plugged into TV directly Part 2 - How to Edit Parental Controls

1. Select Settings either via the remote control, EDEN Bar or Voice control
2. Click down to Broadcasting
3. There are three parental control options which can be edited and adjusted: -Programme Rating Lock -Channel Lock -Mark Adult Channels

1



2



3



Samsung TVs parental controls

Step by step guide

5

Steps for Freeview or Freesat users where aerial is plugged into TV directly A. How to edit the Programme Rating Lock: 1. The Programme Rating Lock default is set to "Allow All" 2. Select Programme Rating Lock and type in your pin (if not set the default is 0000) 3. Select the appropriate broadcasting rating for your child's age 4. Only programs which have been deemed appropriate by your service provider for the age group and younger you have selected will be available

1



2



3



4



Samsung TVs parental controls

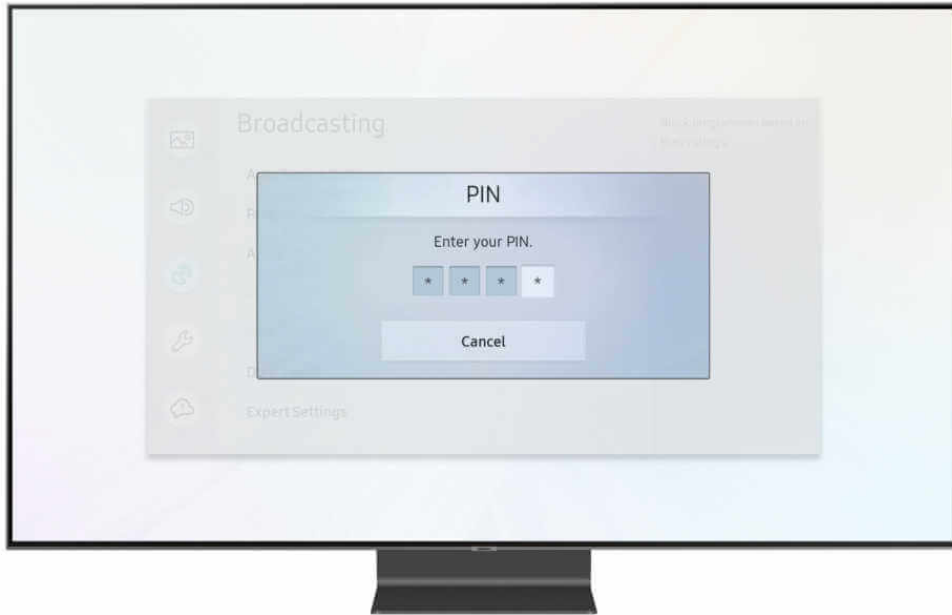
Step by step guide

6

Steps for Freeview or Freesat users where aerial is plugged into TV directly B. How to a Apply Channel Lock and Edit channels: 1. This is on by default and can be disabled by your pin. This function allows you to lock and delete channels 2. Click on Apply Channel Lock and type in your pin. Then the settings menu will automatically close 3. To edit channels open your TV guide, then your channel list and finally select Edit channels at the top of the menu bar 4. Then select all the channels you wish to lock or delete Note - if you delete a channel you can only restore it by going into Setting, Broadcasting, Auto Tuning Settings. 5. To lock the channel type in your PIN 6. Locked channels will have a small locked icon to show that you need the PIN to view them 7. To watch that channel you will now be asked to type in the PIN



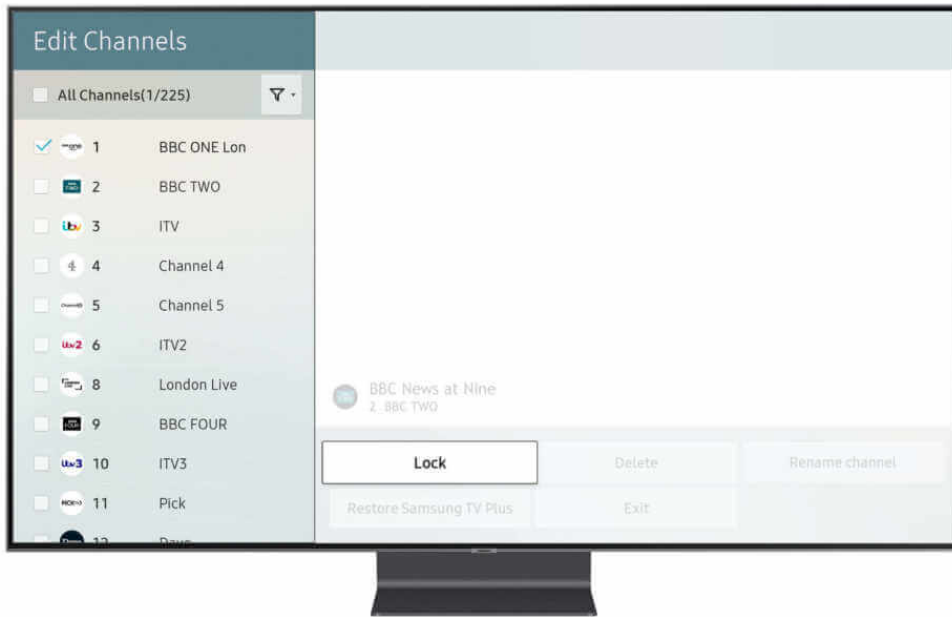
2



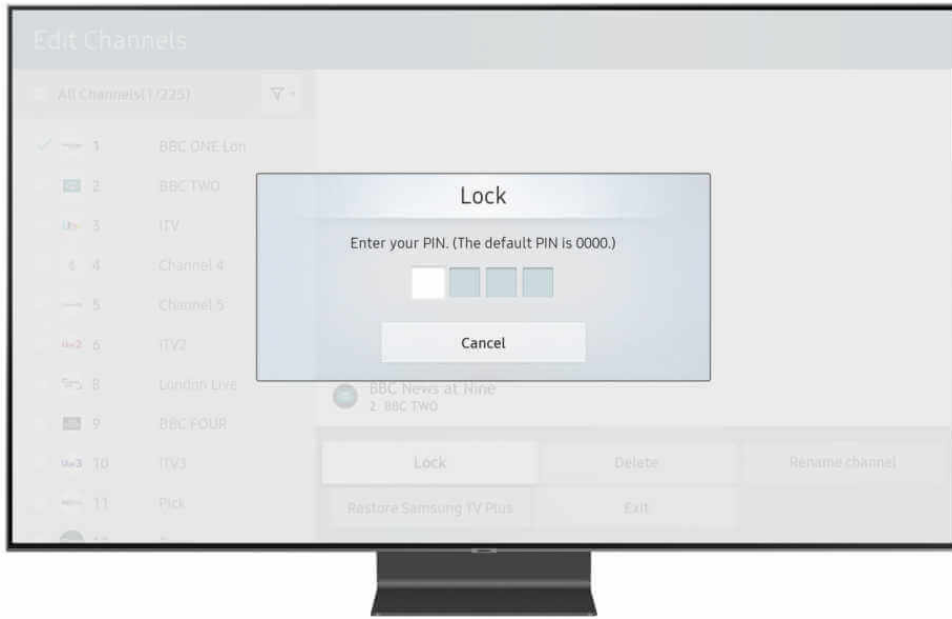
3



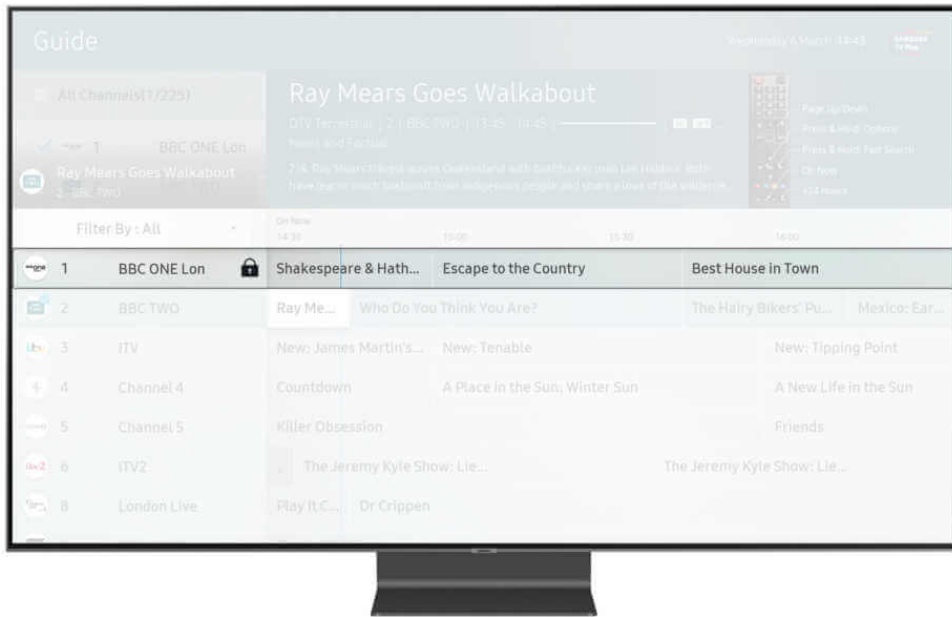
4



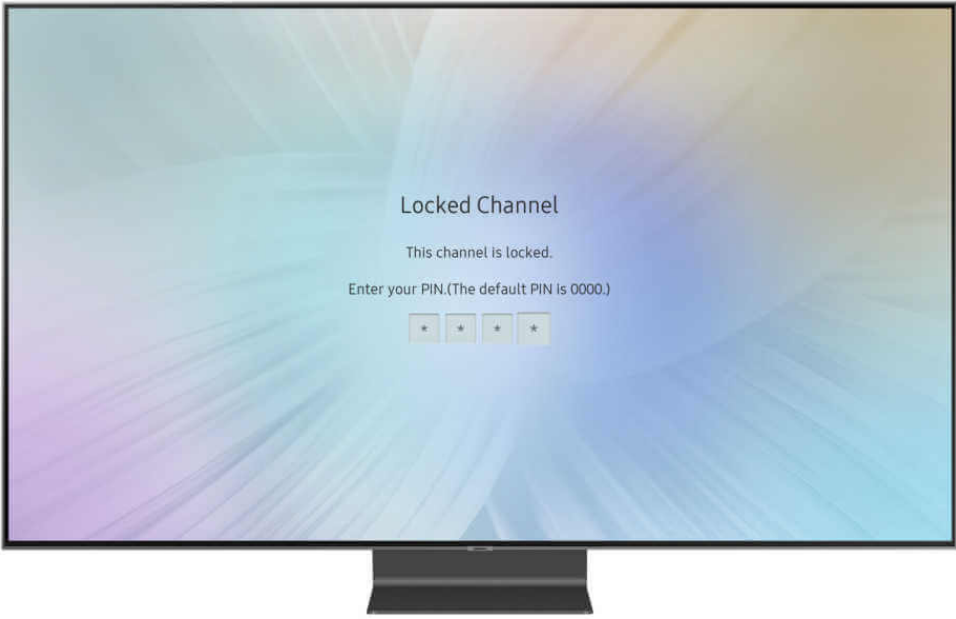
5



6



7



Samsung TVs parental controls

- Steps for Freeview or Freesat users where aerial is plugged into TV directly C. Mark Adult Channels: 1. Disable this function, by clicking on it. This will stop adult services being available NOTE: Some suppliers don't offer Adult Channels meaning that this control will automatically be greyed out.

