

# Wraysbury Primary School - Our Full Return to School Plan March 2021



Dear Parents, Carers and Children

I am writing to share with you our plan for the full return of pupils on the 8th March 2021. We have based it on our previous successful plans.

## **Current Guidance**

The Government guidance released on 22<sup>nd</sup> February provided us with a context for their decision to request all schools to open to all children from 8<sup>th</sup> March and they issued operational guidance which has been used to write this plan and our generic risk assessment. The full guidance issued can be found [here](#).

At Wraysbury Primary we have been working hard on our plans for a full reopening ensuring that we:

- fulfil the expectations required of us
- ensure that the safety of everyone is paramount in all our decisions and actions
- continue to provide a high quality, well balanced curriculum to best support our pupils in their education.

## **Keeping children and staff safe**

Our essential measures are:

- a requirement that people who are ill stay at home
- robust hand and respiratory hygiene
- enhanced cleaning arrangements
- active engagement with NHS Test and Trace
- formal consideration of how to reduce contacts and maximise distancing between those in school, wherever possible, and minimise potential for contamination so far as is reasonably practicable

## **Year Group 'bubbles'**

- We will group each Year Group into a 'bubble' which will remain consistent and separate from other 'bubbles'.
- Most of the time they will be with their regular teachers and support staff in their class but at playtimes and lunchtimes they will be separated into "Year Groups" that will only have limited contact with other "Year Groups".

## **Attendance**

- All children will be welcomed back to Wraysbury Primary School on Monday 8<sup>th</sup> March and attendance is mandatory.
- Some children have their own staggered start and parents have been individually notified of timings for their child

## **Shielding children**

- Where a pupil is unable to attend school because they are complying with clinical and/or public health advice, please contact myself and we will work with you to support your child the best possible way we can.

## **Before Your Child Leaves Home in The Morning**

Please check for any of the following symptoms

- a high temperature
- a new, continuous cough
- a loss of, or change to the sense of smell or taste

If any of these symptoms are evident do not send them to school, contact the school office on 01784 482603 or email [wraysbury@rbwm.org.uk](mailto:wraysbury@rbwm.org.uk)

### **Travel to and from school**

- Please walk, use a scooter or cycle to school if at all possible.
- Children and families should ensure they are following social distancing guidelines whilst travelling to and from school.
- Face coverings are required at all times on public transport.
- For those who travel on the Borough Home School Transport please adhere to their guidelines which I believe have been shared with you.
- Families should use the gate nearest to their home

**PLEASE PARK AWAY FROM THE SCHOOL IF YOU HAVE TO DRIVE AND WALK THE LAST BIT OF YOUR JOURNEY.**

**Please do not park or turn into the Staff Car Park**

### **Morning Drop Offs**

- 8.40 until just before 9.00
- Only 1 adult per family
- Please socially distance while waiting
- Please wear a mask
- Do not bring your child if they have 1 of the 4 COVID symptoms or they are unwell

### **End of the day – Collection**

- 2.50 EYFS collection
- 3.00 Year 1 and 2 collection
- 3.10 KS2 collection
- Y6 may use their gate pass
- Only 1 adult per family
- Please socially distance while waiting
- Please wear a mask



**KS1 PARENTS PLEASE ARRIVE PROMPTLY BY 3.00 AND KS2 PARENTS PLEASE DO NOT ARRIVE AT THE SCHOOL UNTIL 3.10.**

- **Please wait by your marker for the year group you are collecting from**

### **Arrangements in school**

- Children in EYFS will be following a free flow, play based curriculum.
- All classrooms will be well ventilated.
- It will not be possible, nor is it required, to enforce social distancing measures with children in EYFS.
- This means that children will come into contact with all the children in their class and they are likely to come into contact with all the children in the year group during free flow and lunchtimes. Children will wash their hands often and surfaces and equipment will be regularly sanitised.

### **Learning Resources**

- Staff and pupils will have their own items that are not shared.
- Key Stage 2 children can bring their own small pencil case if they wish which will be used only by them.
- We will ensure that there is a set of essential equipment for each child.

- Classroom based resources, such as books and games, can be used and shared within the class bubble; these will be cleaned regularly, along with all frequently touched surfaces.
- In KS1 and KS2 resources that are shared between classes or bubbles, such as sports, art and science equipment will be cleaned frequently and meticulously and always between bubbles, or rotated to allow them to be left unused and out of reach for a period of 48 hours (72 hours for plastics) between use by different bubbles.

### **Assemblies**

- Assemblies will take place on TEAMS



### **Reading Books**

- Reading books can still be brought home
- On their return to school they will be placed in a box and left for 72 hours before returning to the shelves. If your child has a reading book at home, please return it on the first day back.



### **Enhanced cleaning regimes**

- We have adjusted our cleaning rotas with our site team to ensure that much more cleaning goes on during the school day – with particular attention paid to those surfaces that are frequently touched like door handles.
- School staff not normally involved in these duties, like teachers and support staff, have also been helpful in keeping their own classrooms clean and extra materials have been provided for this purpose. We anticipate these arrangements will stay in place until further notice.

### **Coats and bags**

- Please keep items brought into school to a minimum as much as possible.

### **The importance of fresh air**

- Windows and doors will be left open as much as possible to aid ventilation.
- Teachers will plan many outdoor learning activities and therefore it is essential that the children come suitably dressed for all weather possibilities.

### **Activity Clubs**

- There will be no teacher or outside provider activity clubs in the first half of the spring term (e.g. football, street dance etc.). There will be Gap Club.

### **School office**

- The School office will remain open as usual.
- Parents must ensure that children are not late and that they have all that they need for the day (e.g. packed lunches, kit)
- If there is an instance where their child needs to be collected at a different time, please telephone the school to make arrangements.
- Senior Leader/Office staff will then arrange to meet parents with their child in the open air.
- All other communication should be done by telephone or e-mail as far as possible. There will be a post box for you to drop off communications such as slips outside the front of the school.

### **Communication**

- Due to the current restrictions we would request that meetings with members of staff are by prior arrangement only so that social distancing and safety precautions can be put in place.
- If you would like a phone conversation or a face to face meeting please email [Wraysbury@rbwm.org.uk](mailto:Wraysbury@rbwm.org.uk) or telephone the office 01784 482603 to make arrangements. Please keep face to face conversations to a minimum at the school gates.

## Behaviour

- Our Wraysbury values and ethos remain unchanged, and children are expected to aim to uphold them. We will be revisiting these with the children in the first couple of days and we will send them home for your child to share them with you.



In addition to our Wraysbury school rules **Ready, Respectful, Safe** children must be aware of the new requirements in that they must:

- Stay at least 1+ metres apart from each other wherever possible (with a common sense approach taken to EYFS, SEN and younger pupils);
- Use their own specific equipment (including resources) and not share any of these;
- Not share any food, drinks, cups or water bottles;
- Work, eat and play in our designated group, and minimise contact with children from other groups (including in the playground, anywhere on the school site and on our way to and from school)
- Move around school as instructed by our teacher/adult and avoiding other people
- Never cough, sneeze or spit towards another person; catch all coughs and sneezes in a tissue and throw it away (catch it, bin it, kill it), then wash our hands
- Wash hands frequently (including whenever we are asked to), with soap and water for 20 seconds (e.g. by singing happy birthday twice) or with hand sanitiser if soap and water are not available;



## School lunches.

- The menu is on the website, with the normal payment arrangements via the online Scopay System.
- We are aware that many families' situations have changed due to the COVID-19 pandemic check on this website to see if you are entitled to Free School Meals or additional benefits for your child <https://www.cloudforedu.org.uk/ofsm/rbwm/>

## Packed lunches

- Please ensure your child has all the cutlery they need and their meal is easy for them to manage on their own. They may eat outside if the weather is fine to minimise numbers in the Hall.

## Availability of water on site

- All pupils should have their own school water bottle that is untouched by other children or staff.
- No water fountains are currently available at school. Water is available in school to refill children's own water bottles. Disposable plastic cups may also be available that should be thrown away after use (though this is not ideal).

## Snacks

- Please ensure that your child has had a good breakfast before coming to school
- Please provide them with a snack for breaktime (essential for Y5 and 6 as their lunch is not until 1.00!)
- Ideas for snacks are: fruit, vegetables, cereal bar (no nuts please!), breadsticks
- No chocolate or sweets, thank you.

## School uniform

- All children will wear the approved school uniform.

- We expect our children to take great pride in their school and this is reflected in the way they dress for school.
- As we are an active school, we encourage the children to have their Wraysbury Primary PE uniform every day so they can join in all the physical activities in practical and comfortable clothing.

#### **Uniform Supplier**

- Please note that if you want to purchase school uniform or equipment from School Uniform Direct you should use the website <http://www.sud.co.uk/>

#### **Curriculum for reconnection**

- Whilst we are confident that many children will quickly ‘bounce back’ after the lockdown we are aware that there will be some children returning who have experienced bereavements amongst friends or family or who have experienced anxiety or stress during this time. Please let us know of any sensitive situations.

#### **Collective positive mindset – contextualising the lockdown**

- Our staff do not feel that it is helpful to focus on what has been ‘lost’ during the shutdown.
- Our staff will remain calm and measured knowing that whatever the situation we have the staff with the best knowledge and experience of how to teach, support and help our children in ‘closing the gap’ where required. We will not make our children worry unnecessarily or make them think that things are worse than they are and where issues present themselves our language will reflect our established ‘growth mindset’ philosophy – ‘*you can’t do it yet*’.

#### **Assessment**

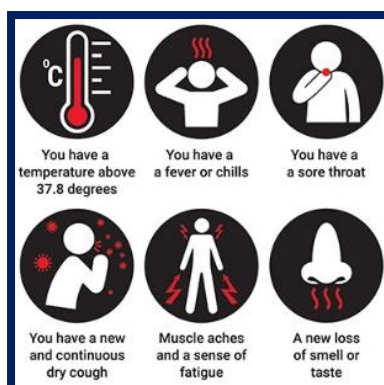
- Our teachers will make adaptations establishing ‘what has to be learned’ rather than sticking rigidly to our usual long term plans.
- Class teachers will use their own expertise to establish starting points for each class/group/child in order to help children then move forward with confidence but each child and class will be different.
- In schools this way of assessing what should be taught next is known as ‘formative assessment’, that is the judgements teachers make on a day to day basis during class work which allow them to assess attainment and progress.
- In order to strengthen routines, relationships and resilience, it is important that (in a measured supportive way) teachers and children get back to established ways of working rather than spending too long on a formal testing regime, especially when children’s confidence will be low.

#### **Broad and balanced curriculum.**

- We fully intend to continue with our normal ambitious and broad curriculum in all subjects.
- We will make use of existing flexibilities to begin at appropriate starting points for all our children and this may mean that not all subjects are taught every week or every term.
- We are hoping to be able to swim in May if the weather is warm enough! Watch this space!

#### **Pupils with additional needs.**

- We are aware that for some children with additional needs, returning to school after lockdown may cause additional anxiety or stress.
- Children with additional needs will be supported by the school inclusion team to ensure a smooth transition when returning to school. In some cases, children with additional needs may require a risk assessment to be completed.
- Staff will continue to be responsive to the needs of individual pupils and additional support will be provided where necessary.
- Small group or 1:1 support may take a different form so that adults and children remain safe, for example, sitting side by side, staff and pupils working at a greater distance from each other, and working in different parts of the school building, or indeed on TEAMS.



### Children or staff suspected of having COVID-19 or Asymptomatic children

Households with a confirmed case of Coronavirus should follow the advice laid out by Public Health England here: <https://www.gov.uk/government/publications/covid-19-stay-at-home-guidance> regarding isolation and should keep their school informed about their planned date of return following isolation.

### Families can apply for lateral flow tests for their household

<https://www.gov.uk/guidance/rapid-lateral-flow-testing-for-households-and-bubbles-of-school-pupils-and-staff>

### Childcare/Wrap around care – The Gap Club

- Other parents should not be collecting your child unless they have been your support bubble throughout the Lockdown.
- The Gap Club will be running our wrap around care from **Monday 8<sup>th</sup> March**.
- The Gap Club are offering a Play and Stay Session through until 4.15 at a reduced fee – please take advantage of this if you are not able to pick up at the end of school.

### Thank You!

I am sure that you appreciate the scale and enormity of the plans for the return in March. Thank you so much for all the support that you have given us. Do please keep an eye on the Twitter feed and on the Website.

@wraysburyschool

<https://www.wraysburyprimary.co.uk/website/home/337045>