



School Development Plan 2017 - 2020





AT CHEAM COMMON JUNIOR ACADEMY WE HAVE:

AN EXCELLENT SCHOOL, WHERE EVERYONE ACHIEVES

A SAFE AND SECURE ENVIRONMENT WHERE EVERYONE FEELS
CONFIDENT TO TAKE A RISK

A RESPECTFUL COMMUNITY WHERE DIVERSITY IS CELEBRATED
AND EVERYONE LEARNS TOGETHER

INDEPENDENT LIFELONG LEARNERS WITH HIGH SELF-ESTEEM

HEALTHY AND ACTIVE LEARNERS WHO CARE ABOUT OUR WORLD



KEY PRIORITIES: 2017 - 2018



Attendance

- a) Improve attendance across the school, from 95.8% to 97%+.
- b) Improve the attendance of children with SEND and / or EAL, as well as Disadvantaged Pupils
- c) Reduce levels of persistent absence to under 0.5%.



INCLUSION

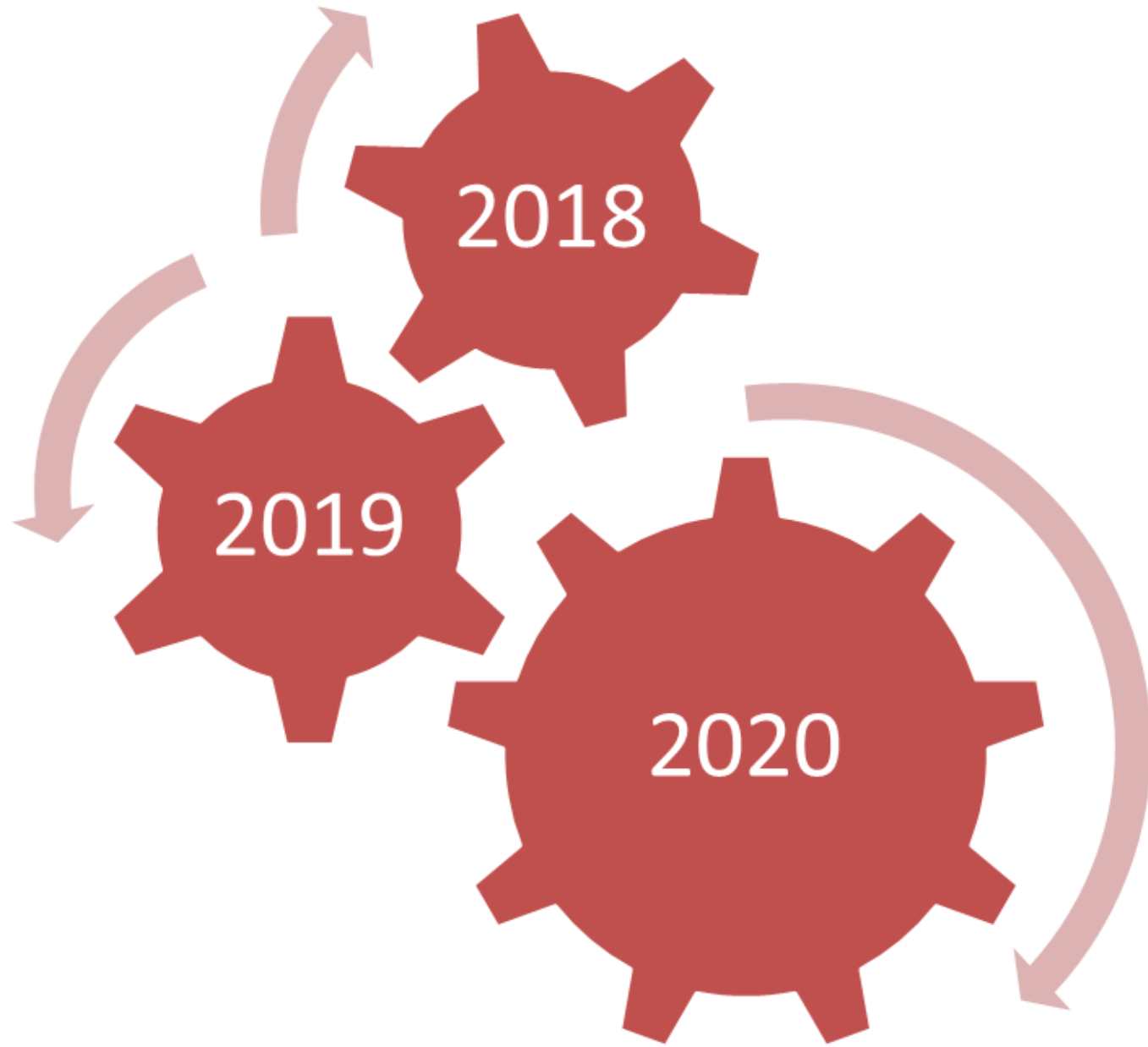
- a) Improve the progress made by all SEN pupils in Maths, Reading, Writing & GPS so that VA progress scores for this group of learners is 2.0+ by the end of KS2 for each cohort.
- b) Improve the progress made by all disadvantaged pupils in Maths, Reading, Writing & GPS so that VA progress scores for this group of learners is 2.0+ by the end of KS2 for each cohort.
- c) Close the gap between disadvantaged pupils at Cheam Common and other pupils nationally to less than 5% in Maths, Reading, Writing & GPS.



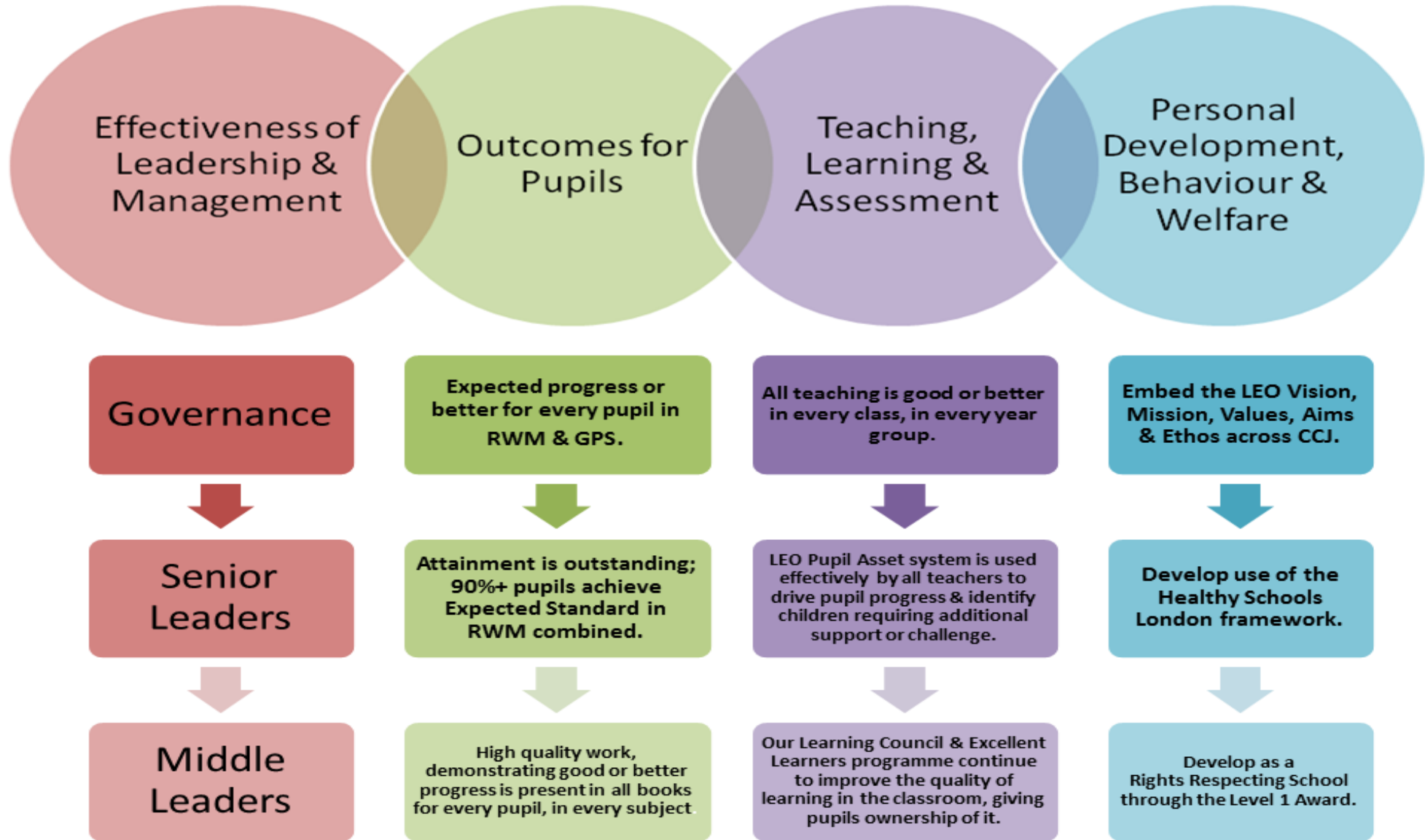
QUALITY OF TEACHING

All teaching is good or better in every class, in every year group to ensure that:

- a) In every year group, 90%+ children are working at the Expected Standard in Maths, Reading & Writing combined, with 45% working at Greater Depth within the Expected Standard.
- b) Teaching both supports children with SEN and disadvantaged pupils and challenges children with high prior attainment at KS1 (2a/3b), so that all children make the expected progress or better across KS2.



KEY PRIORITIES: 2017 - 2020



Cheam Common Junior Academy; Working in Partnership

We work with the following partners to monitor & evaluate the impact and delivery of the key priorities of the School Development Plan. This ensures we are meeting our aims and providing

