

GREENVALE EXPANSION

NEWSLETTER

BRINGING YOU THE LATEST PROJECT NEWS AND UPDATES

WHAT'S NEW AT GREENVALE SCHOOL?

This is the Greenvale School expansion newsletter keeping students, parents and staff updated with the latest project developments. We would like to thank you for your ongoing cooperation and valuable feedback.



Visual of the new school - indicative only, colours are to be confirmed

A SCHOOL FOR YOUR COMMUNITY

Greenvale is Lewisham's community special school for children and young people between the ages of 11 and 19 years who have severe and profound learning difficulties including those with an additional diagnosis of autism, and those with additional medical needs. Many pupils have additional physical and sensory disabilities.

We are excited to announce our vision to transform the site on Mayow Road into a purpose-built building that prepares our students for adult life beyond school, enabling them to achieve according to their true potential. The facility will be exclusively for our young people who are in the Glade pathway and our Key stage 5 students aged 16-19. The educational environment will facilitate our Glade pathway students who need a highly structured intensively staffed learning environment and will create exciting opportunities in both school and in the local community for our Key Stage

5 students. Some exciting features for the new school include:

- ▶ Suites of rooms including group rooms and for our glad students
- ▶ Specialist teaching rooms
- ▶ A purpose built interactive room
- ▶ A large library and ICT resource area
- ▶ A community room
- ▶ A variety of differently designated outdoor areas

We are very excited about expanding and integrating our school within the Sydenham and Forest Hill communities. We know the area well, as we have been offering our support to local food banks and places of worship, and look forward to being part of a community that gives back.

Lynne Haines
Headteacher
Greenvale School



GREENVALE SCHOOL

IN THIS ISSUE

- ▶ A School for your Community
- ▶ Target key dates
- ▶ Find out more
- ▶ The team
- ▶ Let's talk about the design
- ▶ What will the school look like inside?
- ▶ What space do we have outside?

TARGET KEY DATES

- ▶ **Design period**
August/December 2019
- ▶ **Planning submission**
August 2019
- ▶ **Demolition**
March/August 2019 (completed)
- ▶ **Start on site**
January 2020
- ▶ **Completion**
January 2021
- ▶ **School opening**
TBC

FIND OUT MORE

Drawings and visuals will be available soon. To view them, visit planning.lewisham.gov.uk/online-applications and search for 'Greenvale School'.



AVANTI ARCHITECTS



THE TEAM

We have been working closely with Avanti Architects, who are designing the new school, and Osborne, who will build the new school. Over the last few months the School and the Council have had weekly meetings with the design and construction

team. This ensures the new school meets the needs of its pupils, parents, staff and works for the local community. You can find out more about the architect at avantiarchitects.co.uk and the construction contractor at osborne.co.uk



**GREENVALE
SCHOOL**

LET'S TALK ABOUT THE DESIGN



Although it may seem smaller from the outside than what was previously there, the space inside will actually be increased by an extra 500m² – that's almost the size of two tennis courts. This means there will be more valuable learning spaces, inside and outside, for pupils to learn and play.

The new school has been designed to be highly sustainable. It will be built using a factory-made 'structural panel system'. This is a modern method of construction and will help to reduce waste, achieve high quality and build the new school faster.

Learning and pupil spaces have been designed with a 'loop of circulation' around support spaces at the centre of the building.

This gives our staff more flexibility in managing our pupils learning and their curriculum.

Most pupils will arrive by mini bus to the new school. As the mini buses enter into the school off Mayow Road, they will line up along the pupil entrance within the secure school gates. This will be managed at all times by the school. During school hours, the drop off/pick up area will be secured and transform into a play and sports area for our pupils.

Headteacher and staff offices will be located close to Mayow Road. This has been designed to better safeguard our pupils as staff will be able to clearly observe the drop off and pick up points from their offices.



Visual of the former building



Visual of the proposed building



AVANTI
ARCHITECTS



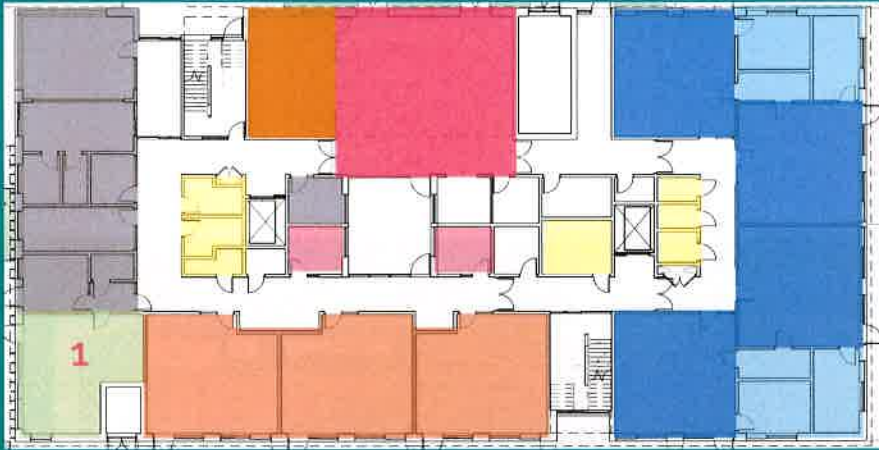
**GREENVALE
SCHOOL**



WHAT WILL THE SCHOOL LOOK LIKE INSIDE?



GREENVALE SCHOOL



GROUND FLOOR PLAN



FIRST FLOOR PLAN

KEY

- | | | |
|--|---|--|
|  Glade classrooms |  PE and dining hall |  Medical room |
|  Glade group rooms and kitchenettes |  Toilets and hygiene rooms |  Stairs, corridors, lift and store rooms |
|  KS5 classrooms |  Kitchen |  Specialist rooms:
1, Community
2, Food tech
3, ICT/library
4, Art/drama/music
5, Sensory and rebound therapy
6, Intervention
7, Multi-purpose |
|  KS5 group rooms |  Staff and office rooms | |



AVANTI ARCHITECTS



GREENVALE SCHOOL

CATTO CENTRE



WHAT SPACE DO WE HAVE OUTSIDE?

