

Working Scientifically

means learning the skills a Scientist needs to be successful



We ASK questions

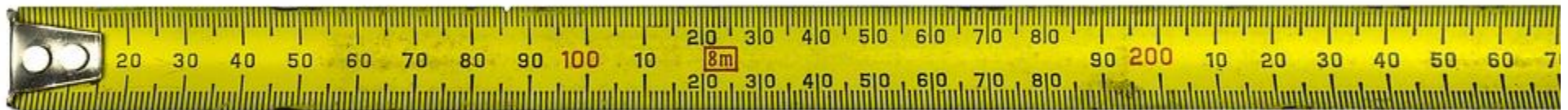
We INVESTIGATE

We collect EVIDENCE by:

MEASURING, OBSERVING and

RECORDING OUR FINDINGS!

We STAY SAFE



5 Types of Enquiry

1) Observation Over Time



What does this mean?

Observations or measurements are made at regular intervals



Examples of this type of enquiry include:



Taking observations of ice melting

How plants and habitats change through the year

Measuring pulse rate after exercise



5 Types of Enquiry

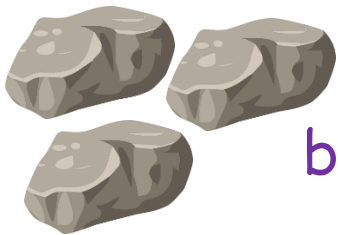
2) Identifying/Classifying



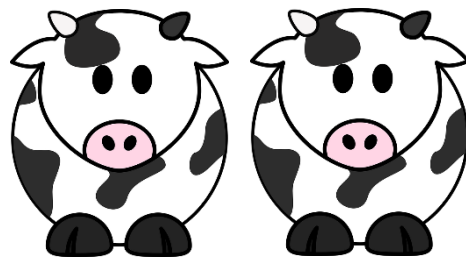
What does this mean?

Sorting and grouping based on similarities and differences

Examples of this type of enquiry include:

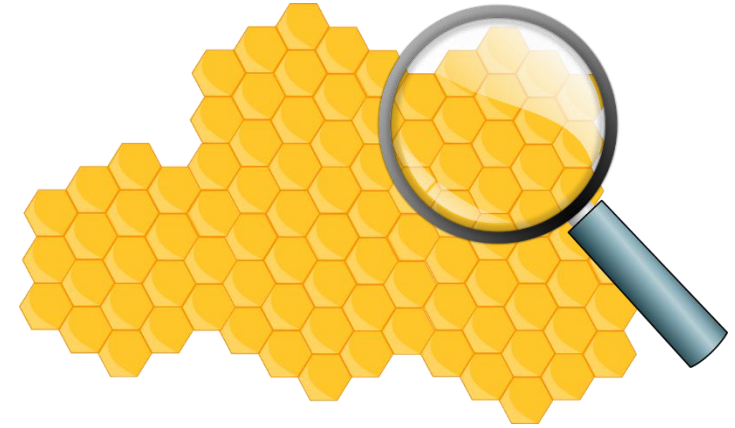


Sorting rocks, plants, materials and animals based on things that are the same and different



5 Types of Enquiry

3) Pattern seeking



What does this mean?

We use this when there are lots of variables (things that can change) so we cannot 'test' it in the same way as 5



Examples of this type of enquiry include:

Do daisies grow in sunnier parts of a field?

Do people with big hands have big feet?



5 Types of Enquiry

4) Research



What does this mean?

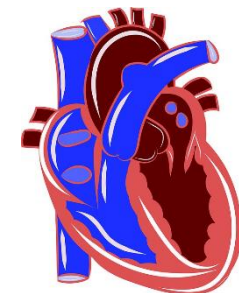
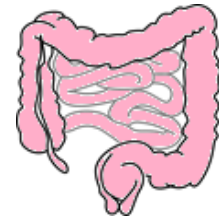
Looking at what others have found out - for example in books and online



Examples of this type of enquiry include:

Looking at the planets

Finding out about the digestive system
or the circulatory system



5 Types of Enquiry

5) Fair test

What does this mean?

One variable is changed and the effect is measured whilst keeping everything else the same

Examples of this type of enquiry include:

Which materials are conductors or insulators?

What is the best material for a parachute?

Which material will freeze?

