



# Miss Shaw's Newsletter



Dear children and families,

What an amazing week it has been! To hear our school, and all its grounds, full of voices and laughter has been fantastic. School has been a hive of activity with lots of learning going on, as you would expect, but also many opportunities just to be able to talk with each other.

You may have heard a lot of press coverage about the harm lockdown has caused children and young people. It has been so difficult, and I think we have all found this most recent lockdown the most challenging yet. To think that yesterday was the anniversary of the official start of the restrictions is bewildering.

As always, the emotional health of our children, and staff, is paramount as we believe that if you are not in a good place emotionally, then your ability to learn is hindered. Despite all the experts in the press telling us differently, we decided to put in plans but to wait and see how the children were on their return. Some were nervous but the overall feeling was of excitement – from children, parents and staff alike!

We also decided to take a positive outlook on reviewing the start of 2021. Our PSHE lessons over these three weeks, until we get to the Easter Holidays, are focussing on celebrating all our successes from our lockdown experiences including what we have learnt about ourselves as learners. The teachers will also be sharing what they have learnt! The three weeks are broken up into these themes:

**Week 1: Building a Bridge:** in week one we will be looking at recognising everybody's individual experiences over the past year, focusing on the positives, commonalities and new strengths and skills that we have developed.

**Week 2: Bouncing Back:** In week two we will be focusing on resilience and how we can maintain a positive outlook in the face of challenge.

**Week 3: Connectedness:** lastly, we will be focusing on friendships, empathy and making good choices moving forward.

We recognise that for some children, coming back to school after so many weeks may be daunting. Mrs Hardy and Mrs Benson are running drop in sessions during playtimes for the rest of this half term, for any child who would like to talk.

I hope you have all enjoyed your first week away from remote learning but also managed to take some time for yourselves.

Stay safe.

Miss Shaw



# Miss Shaw's Newsletter

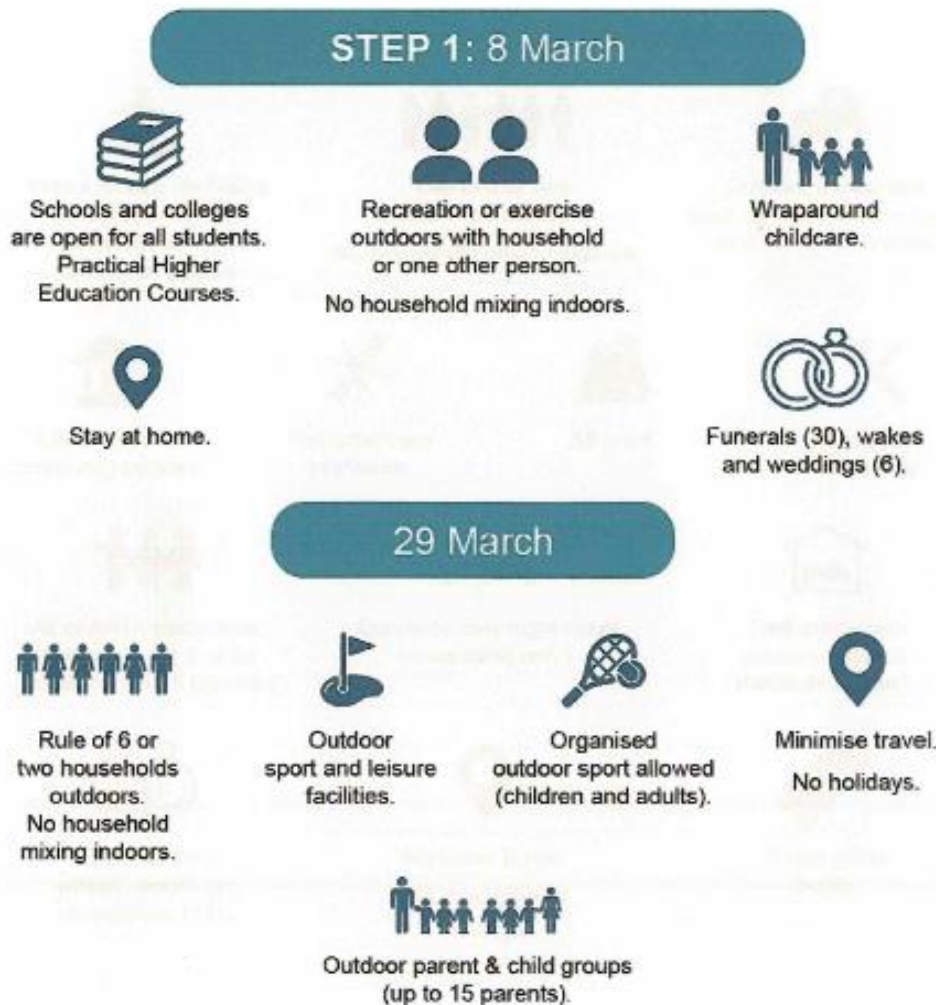
## Please remember

Until the 29<sup>th</sup> March we are still in lockdown. We have had a number of concerned parents talk to us about children being out playing after school. Although schools have returned, the children should be going home straight after the school day. It is vital that we all continue to keep to the rules so the rates continue to drop and we can return to seeing our friends and families.

## The Roadmap steps

### Step 1

Figure 9: Step 1





# Miss Shaw's Newsletter

## Arrival and Collection Times

Please stick to the allocated times so we can keep ourselves safe.

Bubble	Arrival (all days)	Leaving (all days)
Y5/6	8.45	3.10 – 3.15
Y4		
Y3	8.55	3.05 – 3.10
Y2		2.55 – 3.05
Y1	9.05	2.45 – 2.55
YR/1		
Aviary	As per year groups	

## School Meals

Meals for Years 3 – 6 cost £2.25 per day.

Reception, Year 1 and Year 2 are entitled to a universal free school meal.

There is always a vegetarian option available followed by a dessert.

All school meals **must be paid for in advance** via SIMPay, unless your child is entitled to free school meals.

## The Orchard – Booking and Costs

Should you need to use The Orchard, our before and after school club for your child, then you will need to register with our booking system 'Childcare Online Booking' (COB). Visit <https://the-grove-primary-school.childcare-online-booking.co.uk> to register your child/children. You can then log into your account, to book and pay for the sessions you require. All sessions **must** be booked in advance. For further information about sessions and how to book, please contact the school office.

### Charges

The session fees are as follows:

Breakfast Club	£2.50
After school 3.15 – 5.00pm	£6.00
After school 3.15 – 6.00pm	£8.00

There will be an **additional £2 charge per child for any session not booked in advance** via the Childcare Online Booking System. The last collection time is 18:00. There will be a charge of £3.00 for each 5 minutes a child is not collected after this time to contribute to the overtime costs for staff.

### Booking and Cancellation Cut Off Time

	Booking cut-off time	Cancellation cut-off time
<b>Breakfast Club</b>	Midnight the <b>day before</b> the session is needed	19:00 the <b>day before</b> the booked session
<b>After school club</b>	12:00 noon <b>on the day</b> the session is needed	19:00 the <b>day before</b> the booked session

Any cancellations made after 19:00 the day before will be charged in full for the session booked.



# Miss Shaw's Newsletter

## Year 4 Animation Project

As part of Kettle's Yard's Campaign for Empathy project, Year 4 pupils worked with artist Jac Campbell to explore how we understand how people are feeling without them telling us. Over 5 sessions we explored body language, facial expressions and tried to think about how we each felt about lockdown learning.

Together the children created this wonderful animation which we are delighted to share with you all: <https://youtu.be/eW5TkJAiGc>

## Healthy Lifestyle Week – 15<sup>th</sup> to 19<sup>th</sup> March

Next week, the children will be taking part in 'Healthy Lifestyle Week'. As part of this, there are various challenges you can take part in at home – please see the information sent out with this newsletter. We will be raising money for the local foodbank through these activities and also Red Nose Day (see below). Please make any donations here:

<https://www.justgiving.com/fundraising/thegroveschool>

## RED NOSE DAY – FRIDAY 19<sup>th</sup> MARCH

Friday 19<sup>th</sup> March sees the return of Red Nose Day. Please note that, as next week is Healthy Lifestyle Week (see above) and we are raising money for the local food bank through other activities, our money for Red Nose Day will also be donated to the Foodbank. The children are welcome to come to school dressed as a super hero (which can be either real or fictional).

Please make all donations here: <https://www.justgiving.com/fundraising/thegroveschool>



## School Photographs

Individual School Photographs will now be taking place on **Monday 10<sup>th</sup> May**.

Due to COVID restrictions, these will be individual pictures and we are not able to do sibling / family groups on this occasion.



# Miss Shaw's Newsletter



Friday 12<sup>th</sup> March 2021

Rosettes this week have been presented to:

Kestrel: Nahana, Amirah

Eagle: Ahsanur, Ethan

Kingfisher: Magdalena, Summer

Woodpecker: Reece, Evelyn

Kiwi: Joshua, Charlie C

Ostrich: Omar, Bella

Flamingo: Valentine, Mohammad

Wren: Damian, Sarah

Gosling: Michai, Rosie

Duckling: Amelie, Tommy

The Aviary: Michael, Mehreen