

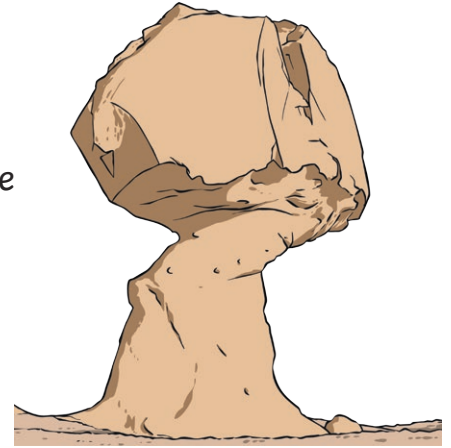
Earth and Space Sciences

Weathering, Erosion and Deposition Remember **WED!**

Weathering

breaks it

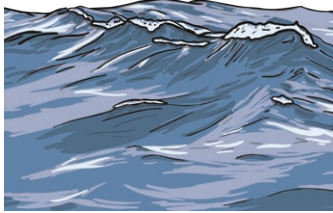
Breaking down of rocks, minerals or other parts of the earth's crust into smaller pieces called sediment.



Erosion

takes it

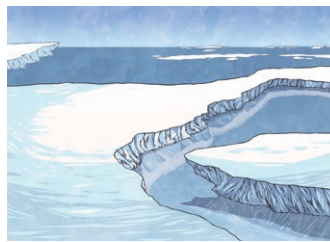
Movement of sediment from one place to another by...



water



wind



ice



gravity

Deposition

drops it

Dropping off the sediment in a new place that can create new landforms such as deltas. Wind can drop sand to create sand dunes.

