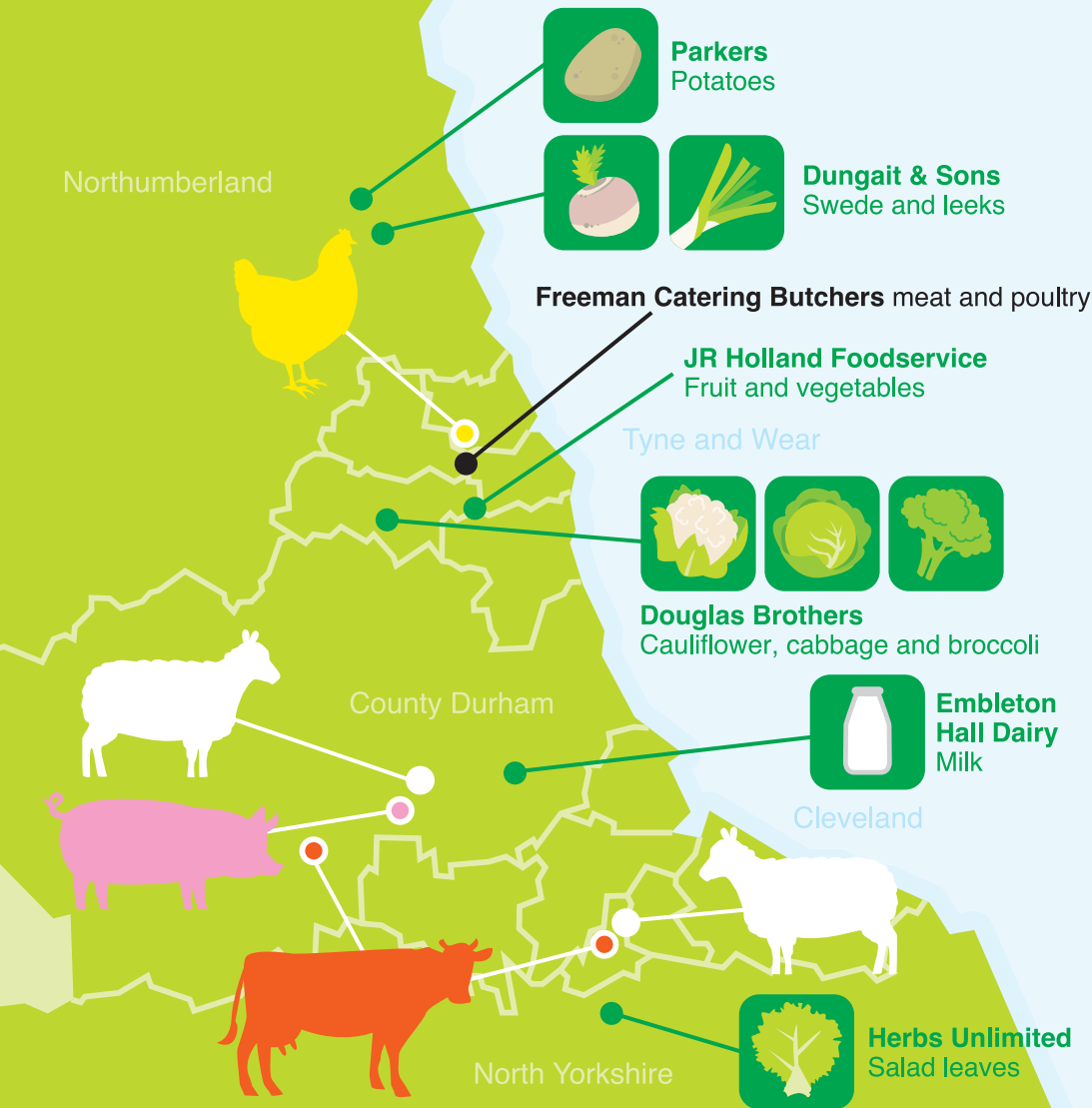


# Local produce map



The Following local produce is available for supply when in season. When it is not in season or available the product would be replaced by another UK product.

**New potatoes:** the variety is Maris Bard and available between June and October, they are grown and 100% sourced from Dungait Brothers of Morpeth.

**Main crop potatoes:** includes the varieties of Estima and Maris Piper, they are available between October and May and are grown by Parkers of Morpeth. This season has been very poor for yields and only 20% has been available for supply, the remaining 80% been purchased from Border Potatoes based in Dalkeith.

**Swede:** these are grown by Dungaits of Morpeth and are available between August and June, they have met 100% of supply.

**Leeks:** these are grown by Dungaits of Morpeth and available between September and April. Due to the poor harvest and growing conditions they have only met 50% of supply with 50% purchased from Witten Growers of Lancashire.

**Carrots:** these are grown in Yorkshire by Poskitt & Sons (Goole). They supply 100% between the months of August and May.

**Parsnips:** These are grown in Yorkshire by Poskitts & Sons (Goole) they supply 100% between the months of August and May.

**Savoy cabbage:** usually sourced 100% from Douglas Brothers of Sunnyside (Whickham) but due to the poor weather approximately only 10% of the supply between the months of August and March has been available the rest purchased from Baxters of Lancashire.

**Cauliflower:** is available from Douglas Brothers of Sunnyside between September and December with 100% available the remaining months of the UK season are sourced from Clements in Lincolnshire.

**Herbs:** are grown and supplied by Herbs Unlimited based in Thirsk. They are available between April and September, the remaining months of the year the Herbs are packed by the same company but imported from Israel.

**Exotic lettuce:** Lollo Rosso, Oakleaf, Endive and grown by Herbs Unlimited between the months of April and September.

**Milk, cream and yoghurt:** is supplied 100% by Embleton Hall Dairies. The milk is produced 100% by North East Farmers and is supplied all year round.

**Free range eggs:** these are produced by Northumberland Eggs at Kearsley Farm, Matfen and are supplied 100% all year round.

**David Mellanby & Partners:** Based at Leechmire Farm, Hutton Henry, Hartlepool supply a large range in smaller quantities of Onions, Parsnips, Swede, White Cabbage, Main Crop Potatoes, Beetroot, Leeks and Savoy Cabbage.

**Meat and poultry:** Freeman Catering Butchers use local farms for their meat and poultry.

- Lamb supplier
- Beef supplier
- Pork supplier
- Poultry supplier

