

Year 6 – BODMAS

Wednesday 20th May 2020

Part 3 – Reasoning & Problem Solving

WALT Calculate Order of Operations (BODMAS)
See my notes in green to help you.

Problem Solving 1

Use the following numbers to create a calculation with the answers below.

4

3

12

Answer	Calculations
144	
84	

Problem Solving 1

Use the following numbers to create a calculation with the answers below.

4

3

12

Answer	Calculations
144	$3 \times 12 \times 4$
84	$(3 + 4) \times 12$

Reasoning 1

Josh is completing this calculation:

$$8 \times 5 + 20 \div 10$$

The answer is 6. I did
 $8 \times 5 = 40$, then
 $40 + 20 = 60$, then
 $60 \div 10 = 6$.



Josh

Is he correct? Explain how you know.

Reasoning 1

Josh is completing this calculation:

$$8 \times 5 + 20 \div 10$$

The answer is 6. I did
 $8 \times 5 = 40$, then
 $40 + 20 = 60$, then
 $60 \div 10 = 6$.



Josh

Is he correct? Explain how you know.
Josh is incorrect...

Reasoning 1

Josh is completing this calculation:

$$8 \times 5 + 20 \div 10$$

The answer is 6. I did
 $8 \times 5 = 40$, then
 $40 + 20 = 60$, then
 $60 \div 10 = 6$.



Josh

Is he correct? Explain how you know.

Josh is incorrect, the answer is 42. Multiplication and division come first, then subtraction and addition. $8 \times 5 = 40$, $20 \div 10 = 2$, then $40 + 2 = 42$.

Problem Solving 2

Work out which child has which calculation from their given answers.

$$6 \times 4 + 8 - 2$$

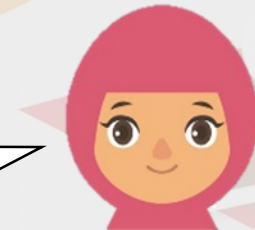
$$6 \times (4 + 8) - 2$$



Sinead

My answer 70.

My answer is 30.



Hafsa

Problem Solving 2

Work out which child has which calculation from their given answers.

$$6 \times 4 + 8 - 2$$

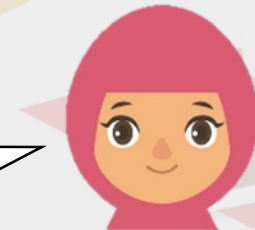
$$6 \times (4 + 8) - 2$$



Sinead

My answer 70.

My answer is 30.



Hafsa

Sinead: $6 \times (4 + 8) - 2 = 70$

Hafsa: $6 \times 4 + 8 - 2 = 30$

Well done! It's over to you now.

Go to Part 4 and choose your Star Challenge! Normal rules apply: page 1 will give you an easier challenge, page 2 will be about the same as what we've just practised and page 3 will be more of a stretch.

You only need to do the first set of questions on your chosen Star Challenge – the 'A' questions. If you want extra practice, you can then do the next set of questions – the 'B' questions. When you finish, don't forget to mark your answers before sharing, so I can see where you need help.