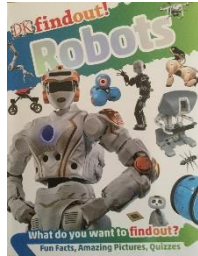


# Hub Weekly Challenges 15

Week beginning 18<sup>th</sup> January 2021

## Robotic Japan! Week 2

Read p.4-5 and then complete the Book Quiz on Google Classrooms. Remember to read the question carefully and read how many answers you need to tick for each question. Each question is worth 5 points.



How did you do?

Watch the Kevin McCloud clip on Google Classrooms and then I've recorded you a special message! I would love to know what you think after watching it.

[The Robot That Gives Humans a Job | Kevin McCloud's Rough Guide to the Future - YouTube](#)

## What is the difference between fiction and non fiction?



Look through our Robots book, can you find words and phrases that would not appear in a fiction book? What else might you not find?

Watch this clip from BBC Bitesize

<https://www.bbc.co.uk/bitesize/topics/z2yycdm/articles/zty8xfr>

## The Tasty Challenge

Have a go at making Japanese Sushi balls. You will find the recipe at the link below. They look a lot of fun to make.



<https://www.kidspot.com.au/kitchen/recipes/fun-sushi-balls-recipe/mh85tx1x>



## It's Your turn

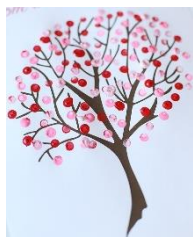
Choose your favourite page in our Robot book.



Now, design a quiz for the others in the Hub. You can do one similar to mine or you might like to do a crossword or wordsearch. Look on Google Classrooms for ideas. Be creative!

## Arty Crafty

This week can you make a Japanese blossom tree by finger painting?



Cherry blossom is a very big deal in Japan. Normally appearing in April and lasting for about two weeks....it brings in great crowds to see the magnificent trees.



## Maths Madness

1. Complete Puzzle 72. Can you work out what number each shape stands for?

2. Play Five Across.

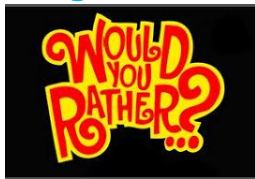
Draw a 1-25 grid on paper. Pick a card from a pack of cards. You can place the card on a multiple or factor of the value of the card you picked up. How many cards can you place on your grid before you get stuck. If you can find someone to play with, take it in turns. Who places the most cards on the grid? Ace -1, Jack -11, Queen-12 King -13.

1	2	3	4	5
6	7	8	9	10
11	12	13	14	15
16	17	18	19	20
21	22	23	24	25

3. Play 'Block Out' with your dice. You will be looking at the area of rectangles and squares.



## Would you rather...?



Would you rather feet for hands or hands for feet?

Can you explain the reasons for your choice?

## Stay healthy!

Make sure you do some Funfit at home. My challenge to you this week is to see how far you can jump from standing. Decide on your starting line and measure how far you can jump. Over the week, can you improve your score! Make sure you warm up your legs and feet first.

Or you could log onto PE with Joe on a Mon, Wed and Fri morning at 9.00am on youtube or you can play them back at any time.



Challenge yourself to eat a rainbow.



Think about the food you are eating, can you eat all the colours of the rainbow in one day?

### Perseverance

Keep trying and never give up even when learning is difficult. A tortoise is slow but they persevere and get there in the end.



Learning from home can be challenging. You are going to have to become like a tortoise and keep on going!



## Collective Worship

Our value this half term is Perseverance. **"Let us run with perseverance the race that lies before us. Let us keep our eyes fixed on Jesus, on whom our faith depends from beginning to end." Hebrews 12 v1-2**

Log onto the youtube page of exmouthcoastalchurches to find our weekly collective worship.

Can you set yourself a New Year goal or challenge? Each week, try and persevere with your goal and see if you can see any improvements.

## It's Game Time

In your home learning box this week, I've sent you home with some games to play. Have fun!



## Your turn!

Would you like to set any of the challenges next week? Send me any of your ideas. Maybe you would like to set a Tasty Challenge or the next Would You Rather. Be creative!

This will be on the school website and on Google Classrooms by 8.30am every Monday. Please send me your responses and pictures by Friday 4.00pm please if you want your entries to be included in our Hub Exhibition. Send me an email to [hubteacher@littleham.devon.sch.uk](mailto:hubteacher@littleham.devon.sch.uk) or reply in Google Classrooms