

Coming into and leaving school

Y3 and Y4 Pupils

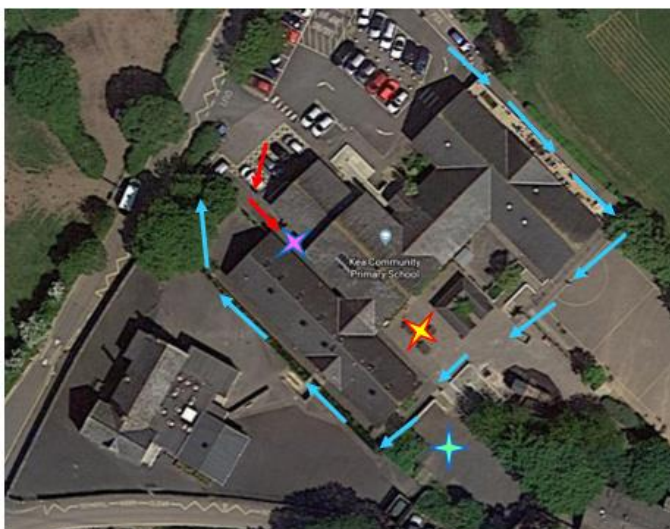
We request that you drop your child in the carpark to the right of the school kitchen where they will walk along the narrow pathway into the main corridor

As it will not be possible for you to have a quick chat with your child's teacher at the classroom door, if you need to share any information with them, please send an e-mail to the school office and we will make sure it is passed on as soon as possible.

At the end of the day, please follow the arrows round the school and wait for your child in the appropriate area.

We request that only one adult accompanies their child to school. If you have younger children/toddlers, please keep them in buggy or standing close by you at all times.

Please do not allow your children to run around or play on the playground.



Mornings



Children to be dropped in the car park and walk through the wooden gate and along the narrow path by the right side of the kitchen



Way in for Y3 and Y4 pupils

Afternoons



One way round the school for parents to collect their children



Y3 parents to wait by the picnic benches



Y4 parents to wait on the huff and puff playground