

# Pine Class Newsletter – Summer 1, 2021

*Dear Parents and Carers*

*A very warm welcome back to school! We hope that you have had a lovely Easter.*

*It has been fantastic welcoming the children back into school and we are looking forward to a busy summer term ahead!*

*Miss Cockayne and the Pine Class team*

## **Topic**

This half-term, our topic is 'All Around the UK' and will have a geographical focus. Where appropriate, teaching will be linked to this topic. Please see the half-term topic web for more detailed information.



## **Show and Tell**

Show and Tell for this term will run on the following days: Friday 7<sup>th</sup> May (surnames A-F), Friday 14<sup>th</sup> May (surnames G-M), Friday 21<sup>st</sup> May (surnames N-S) and **Thursday 27<sup>th</sup> May (T-Z).**

For Show and Tell this half-term, we would like children to prepare to talk about either a place of interest that they have visited or researched in the U.K. or a significant British person from any area of interest (eg. science, sport, entertainment, history, art). Supporting documents or photos can be uploaded to the Show and Tell assignment on Google Classroom or children may bring in a poster / souvenir / book etc to share on their sharing date above.

## **PE Sessions**

**Pine P.E. days are Monday pm and Tuesday morning this term.**

To help your child with these sessions, please ensure that they wear clothes that enable them to dress and undress themselves independently. Clothes must be clearly named.

No earrings on P.E. days please. If children have newly pierced ears, please provide microporous tape so that the earrings can be covered.

P.E. sessions will be outside this term, so please ensure that children have suitable outdoor kit and footwear.

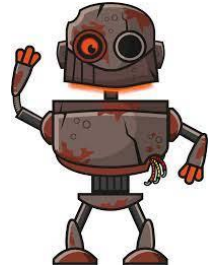
## **Homework**

This term, we will be setting a handwriting, spelling and maths task for homework each week.

Homework tasks will be assigned on Google Classroom each Friday and returned by the following Friday.

Children will be tested on their weekly spellings every Friday. Please practise spellings regularly during the week.

Later this term, we will be launching Numbots from the makers of Times Tables Rock Stars. This is an online learning platform focusing on boosting addition and subtraction skills. More information will be sent out shortly.



## **Home School Communication**

This term, we will use physical home school journals to log reading. They will be checked weekly when your child's books are changed, unless we are notified of any important messages.

We will continue use the private message function on the class stream or e-mail/call you directly should we wish to notify you of anything as there are limited opportunities to talk at the start and end of the day. Please check Google Classroom regularly for general updates.

I will also be available between 8.00 – 17.30 directly via e-mail at [hcockayne@bottishamprimary.org](mailto:hcockayne@bottishamprimary.org). Please note that I may not always be able to respond during the school day however.

## **Reading Books**

This term, we will continue to issue one physical book each week and a selection of digital books on <https://ebooks.collinsopenpage.com/>. Log-in information has been posted to Google Classroom.

Books will be allocated by teaching staff according to whole class teaching and phonic/reading assessments completed at the end of term.

Books will be changed each Friday for both Year 1 and Year 2.

## **Teaching Staff and Timetables**

Class Teacher - Miss Cockayne

PPA Cover Teachers - Mr Green / Mrs Pearce (Tuesday am) and Mrs Quilter (Friday pm)

Please note that teaching staff will not generally be in school during their PPA sessions this half-term. We can be contacted via email during this time, however.

## **Hall Use**

This term, the children will have a weekly bubble assembly in the hall every Wednesday morning with Mrs Johnston or Mrs Heijne. The class will also eat their lunch in the hall on Mondays. This is a very exciting and positive step forwards for the children; it will be fantastic to be able to use some of wider school facilities this term.

## **Dates for your Diary**

**Earth Day** – Thursday 22<sup>nd</sup> April

**NSPCC Number Day** – Friday 7<sup>th</sup> May (non-school uniform with numbers on for a £1 donation to NSPCC)

**INSET Day** – Friday 28<sup>th</sup> May