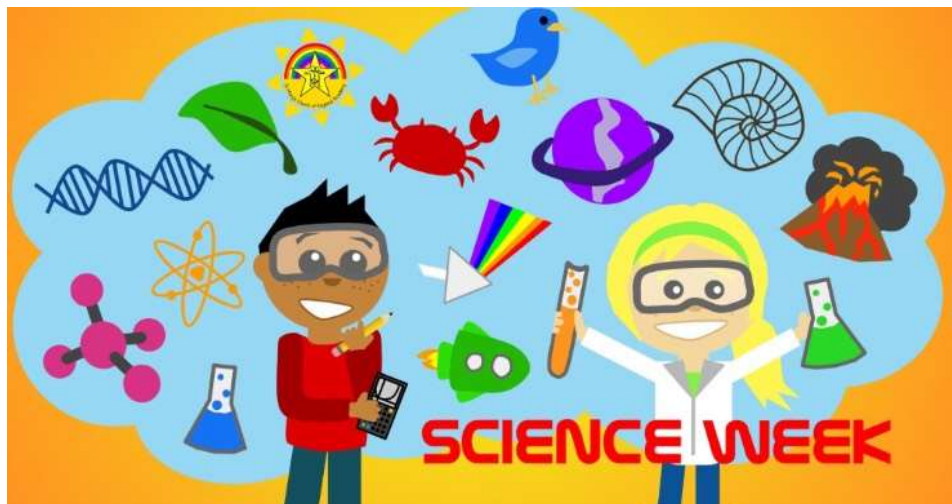


ISLEHAM WEEKLY NEWS

Week commencing: Monday 5th July 2021



SCIENCE WEEK- THIS WEEK



This week is Science Week at Isleham Primary- if you have any great experiments to share or any great science books, please bring them in one day this week!

The Year 6s are preparing some experiments to share with the school in our fayre on Friday afternoon- their preparations are looking very exciting!

Mrs Skillern

MOVE-UP DAY- THURSDAY 8TH JULY



This week, we will also have the opportunity to look ahead to next year as the children will have the chance to spend the day with their teacher for next year in their new classroom space. In the morning, children will go straight to their 'next year' classroom. Staff will be available to escort them and ensure they settle quickly into their new class.

Year 6 will be carrying out a hike from Fordham to Isleham on Thursday, followed by an afternoon of sports with our Witchford sports coach. Please see the separate letter for Year 6 families about this.



Isleham Church of England Primary School
Malting Lane, Isleham, Ely, Cambridgeshire, CB7 5RZ
Telephone: 01638 780336
Email: office@isleham.cambs.sch.uk
www.isleham.cambs.sch.uk

SCHOOL REPORTS HOME THIS WEEK & FINAL WEEK OF 'WOW' WORK SHARING FOR SUMMER 2021



On Friday this week, we will be sending home your child's end-of-year report via ClassDojo.

This includes a summary of your child's attainment and effort grades across the year, including through the period of lockdown in the spring term. It is worth noting that nationally there has been a slight dip for pupils in attainment but many are catching up well now that teachers and learners are (for the most part) back in school. We are very pleased with the hard work and attainment of pupils across the school throughout this difficult year, and hope you are also proud of your children's hard work and resilience this year.

As in previous reports sent to parents this year, we have provided the standardised PIRA and PUMA assessment data for your child within each of the school terms (for children in Year 1 to Year 6) relating to the summative tests which have been conducted in school. Please note that the PIRA & PUMA paper scores offer a 'checkpoint' standardised score for each child for each term, but teachers use this summative data alongside their own formative assessments and evidence from the children's books and classwork to allocate an overall attainment 'grade' for the year. Sometimes, a greater depth score in this particular test may not indicate that a child is consistently achieving greater depth across all areas of that curriculum, just as a lower score may not be indicative of a child needing additional help, as it could simply be a poor one-off score in that particular test. This year, the teacher assessment grades replace national SATs assessments in end of key stage year groups- Year 2 and Year 6.

PLEASE BRING IN A CARRIER BAG THIS WEEK SO THAT YOUR CHILD CAN TAKE HOME ANY ADDITIONAL ITEMS FOR SENDING HOME. Over the next couple of weeks, there will be an opportunity for your child to bring home some of their exercise books, although we do always keep a selection of books as evidence of curriculum coverage and return these to children the following year.

Thank you again for all your support of your children.
Mrs Skillern



JUNIOR TRAVEL AMBASSADORS COMPETITION



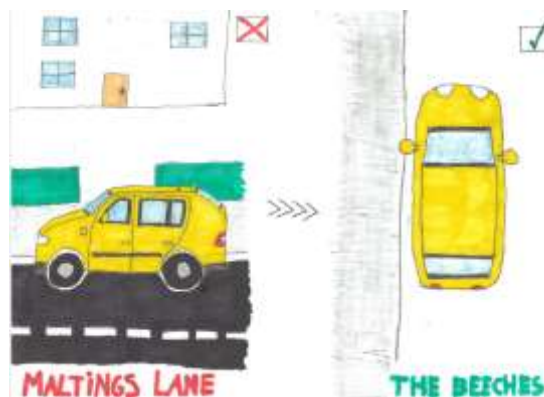
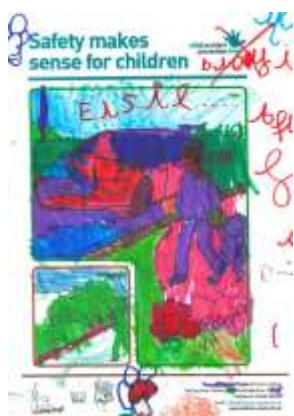
The Junior Travel Ambassadors



Congratulations to the two main winners from the JTA Key Stage 1 road safety colouring competition:- Stanley and Elsie, and to the winning road safety poster designers from Key Stage 2:- Lois and Harrison



The Junior Travel Ambassadors were delighted to hand out prizes last week to entrants and are looking to display the wonderful entries from across the school.



Isleham Church of England Primary School
 Malting Lane, Isleham, Ely, Cambridgeshire, CB7 5RZ
 Telephone: 01638 780336
 Email: office@isleham.cambs.sch.uk
www.isleham.cambs.sch.uk

SPORTS EVENTS



We saw great sportsmanship across all classes last week in our sports events. Thank you to all parents and family members who came to support and spectate.

Well done to Year 1 and Year 2 who are shown in our photo collages in this week's newsletter.

Year 3 and Year 6 are due to have their sports events tomorrow- Tuesday 6th July. We are hoping to dodge the rain showers so that they will get to take part.

Here are the proposed times:-

9.20-10.00am (Y3)

11 -11.40am (Y6)





SPORTS DAY

Year 2 had a wonderful day on Thursday 1st July taking part in their sports day. It was great to see all the children cheering each other on and enjoying the sports in the sunshine. Thank you to all the adults who came along too. We hope you enjoyed it!

PTA TRIATHLON SPONSORSHIP MONEY COLLECTION

This week is the last week for sponsorship money- thank you so much for your donations so far. We will announce the grand total raised for the PTA next week.

Please keep sending your money into school in a named envelope. All donations, large or small are welcomed and we will then forward your child's medal. Either cash or cheques made payable to Isleham School PTA are perfect. THANK YOU AGAIN.



Isleham Church of England Primary School
 Malting Lane, Isleham, Ely, Cambridgeshire, CB7 5RZ
 Telephone: 01638 780336
 Email: office@isleham.cambs.sch.uk
www.isleham.cambs.sch.uk

ASSEMBLIES & MUSIC THIS WEEK

This week we will be thinking in our Picture News assembly about the following question:-



We will also be considering our Christian values and enjoying our final assembly from the Three Rivers Church group as well as several presentations for science week.

SCHOOL MENU THIS WEEK

LUNCHTIME CO		Week 3 Commencing - 22 nd March, 26 th April, 17 th May, 14 th June, 5 th July 2021				
	Monday	Tuesday	Wednesday	Thursday	Friday	
Freshly baked bread	Wholemeal	Poppy seed bloomer	Garlic bread	Rosemary wholemeal	Focaccia	
Menu choice 1	Vegetable Nugget & potato wedges	Sausage Hot Dog	Meatballs & Pasta with garlic bread	Roasted Beef with roasted potatoes & Yorkshire Pudding	Fish Fingers/Fishless fingers with chips & garden peas or beans	
Menu choice 2	Jacket Potato with cheese	Jacket Potato with Cheese/tuna	Jacket Potato with cheese	Quorn fillet with roasted potatoes	Jacket Potato with cheese	
Menu choice 3	Cheese roll	Cheese roll	Cheese roll	Cheese roll	Cheese roll	
Desserts	Pancake & Sauce	Chocolate Cookie	Apple Pie & custard	Fruit Muffin	Banana Cake	
	Sliced fresh fruit	Sliced fresh fruit	Sliced fresh fruit	Sliced fresh fruit	Sliced fresh fruit	

Our mission is to make your lunchtime meal the highlight of your day.

Available every day:

- Seasonal vegetables
- Selection of fresh salad

Some of our food may contain allergens. Please ask our chef for advice.



COMMUNITY NEWS

The Three Rivers Group of Parishes Holiday Club 2021



Friday July 30
9.30-12.30

or

Friday August 6
9.30-12.30

Venue: St Andrew's Social Centre gardens,
Isleham

For rising 5's to 11 years
Join us for lots of outdoor fun!

Contact Revd Sue to register
revd.sue@icloud.com
01638 721662



Isleham Church of England Primary School
Malting Lane, Isleham, Ely, Cambridgeshire, CB7 5RZ
Telephone: 01638 780336
Email: office@isleham.cambs.sch.uk
www.isleham.cambs.sch.uk



Play & Chat

At the park!

Weds 9ish-10:30am
Isleham Playground



“Play & chat @ the park” - Networking for parents and carers of Isleham’s Under 5s

Weds mornings at Isleham Playground

A weekly get-together at Isleham play area for parents and carers of under 5s. Bring your own picnic blanket and toys and come along to see who else has young children in the local area.

Weather permitting and for the next few weeks, some of the parents that used to attend the village toddler groups will be on hand from **9:15 to 10:30am** to share info about local activities and groups.

The Beeches will be open for access to the toilet facilities and to serve tea and coffees.

Social distancing will be observed during the “Play & Chat” gatherings.

TERM DATES- SUMMER 2021 THE WEEKS AHEAD

5th July- SCIENCE WEEK (all classes)

6th July- Year 3 (9.20am) and Year 6 (11am) sports events

8th July- Move up day (Year 6 day trip in locality- drop off to Fordham recreation ground (next to play park- 8.45am- 9.00am) New Reception children visit session am & pm groups (9.15-11.15 OR 1.00pm-3.00pm)

Current Reception photo included in Ely Standard

9th July- Date for publishing of Year 5 production video via Google Drive link

Science Fair (Year 6 to share their stalls), Sharing Friday and end-of-year reports home.

13th July- 3.30pm Year 5 residential meeting in hall

14th July- Summer Concert video to be shared by Google drive

15th July- after school- Year 6 Pizza party and games on field to 5pm

16th July- pm- Year 6 leavers’ service and final day in school

19th-21st July- Year 6 residential visit to Thorpe Woodlands

21st July- last day of summer term all pupils

22nd July- Professional Development Day for staff- school closed to pupils

1st September- Professional Development Day for staff- school closed to pupils, home visits to new intake Reception families

2nd September- Professional Development Day for staff- school closed to pupils, home visits to new intake Reception families

3rd September- Year 1 to 6 autumn term starts, home visits to new intake Reception families

6th September-New intake Reception pupils start full-time

