

Week 7 Monday 8th June Session 1

Let's start the week with some word work:

I want you to look at words with the suffixes _ed, _er and _est.

Can you fill in these worksheets.

Adding Suffixes

Choose one of the suffixes below to add to each root word. Remember to use spelling rules to make sure that the words are spelt correctly.



-ed

-er

-est



Spelling Rules

Do you need to **just add the suffix**, **drop the 'e'**, **change the 'y' into an 'i'** or **double the final consonant**?

Root Word	Suffix	Spelling Rule to Remember	Final Word
want	-ed	just add -ed	wanted
high			
sad			
live			
walk			
dry			
start			
smile			
remain			
echo			
listen			

Adding Suffixes

Choose one of the suffixes below to add to each root word. Remember to use spelling rules to make sure that the words are spelt correctly.



-ing

-ly

-ness



Spelling Rules

Do you need to **just add the suffix**, **drop the 'e'**, **change the 'y' into an 'i'** or **double the final consonant**?

Root Word	Suffix	Spelling Rule to Remember	Final Word
chase	-ing	drop the 'e'	chasing
follow			
weep			
sad			
bright			
block			
fail			
sudden			
talk			
scorch			
dance			
celebrate			

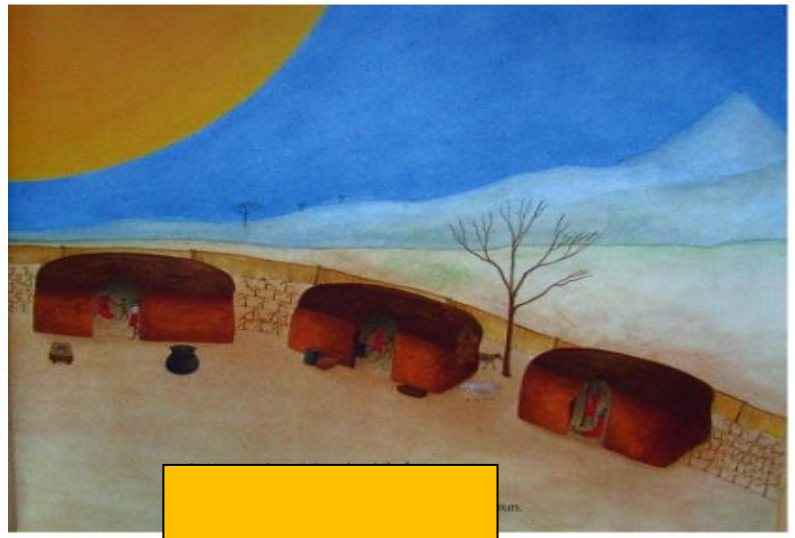
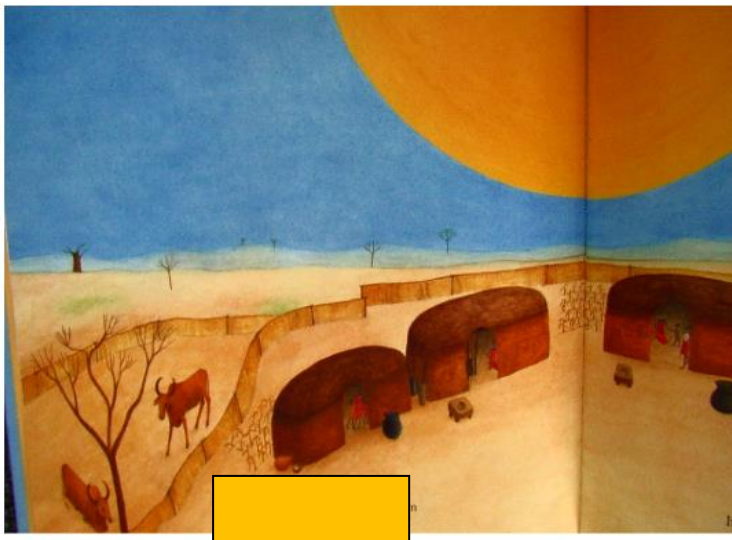
Now I'd like you to do this worksheet ly, ing and ness

Session 1 continued

The text this week is:

Lila and the Secret of Rain by David Conway and Jude Daly.

Look at this picture. What can you say about it?



Which continent do you think this story is from?

Why do you think that?

What kind of weather do you think it is?

Who do you think lives inside the houses?

Why aren't the people outside?

Can you see any animals?

What do the trees look like?

How would you feel if you lived there?