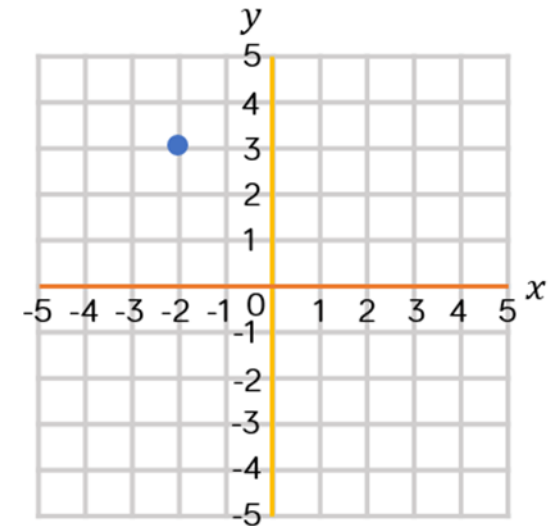
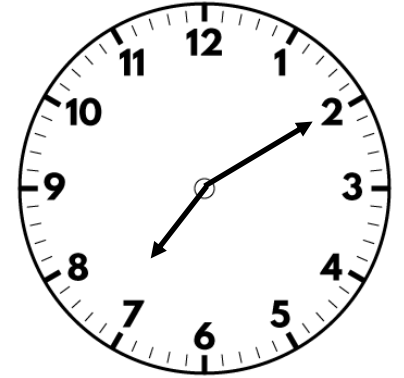


1) Write $\frac{3}{10}$ as a decimal.

2) What is $36 \div 10$?

3) What are the coordinates of the point?

4) Multiply 38 by 6



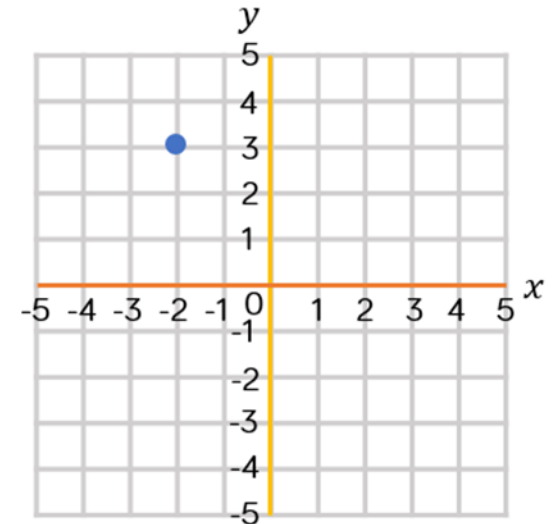
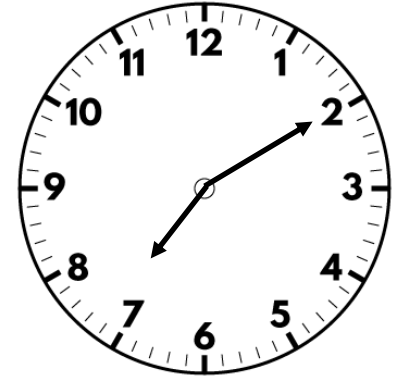
Flashback 4

1) Write $\frac{3}{10}$ as a decimal. **0.3**

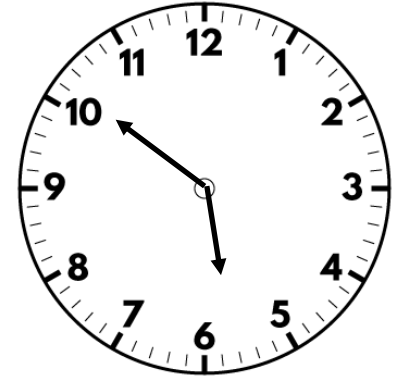
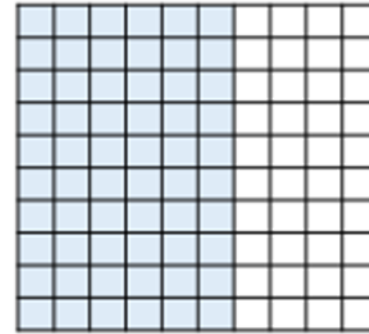
2) What is $36 \div 10$? **3.6**

3) What are the coordinates of the point? **$(-2, 3)$**

4) Multiply 38 by 6 **228**

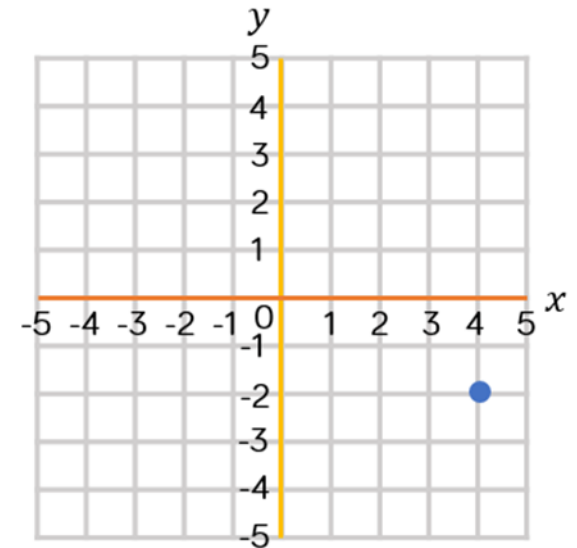


1) What percentage is shaded?



2) What is $28 \div 100$?

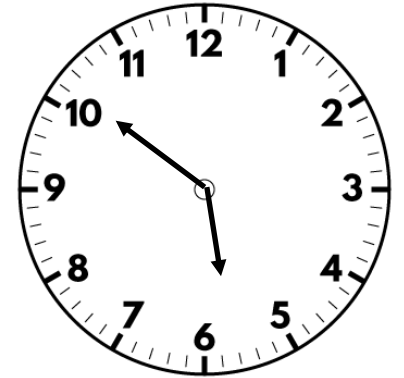
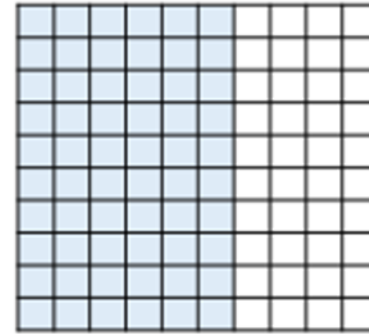
3) What are the coordinates of the point?



4) Add together 648 m and 2,500 m

1) What percentage is shaded?

60%



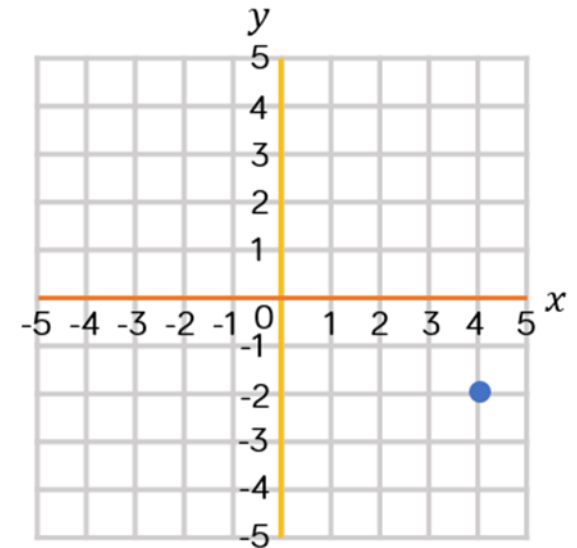
2) What is $28 \div 100$? 0.28

3) What are the coordinates of the point?

(4, -2)

4) Add together 648 m and 2,500 m

3,148 m

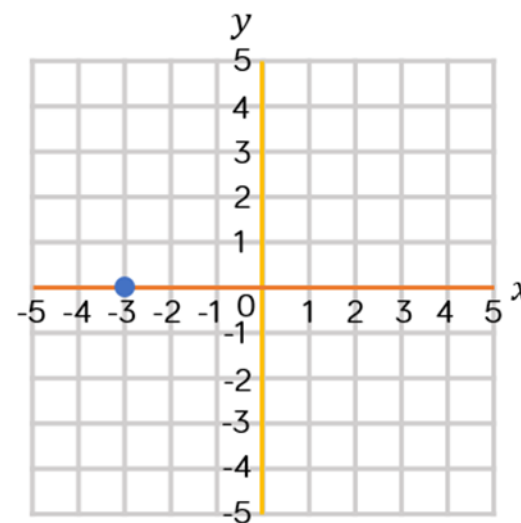
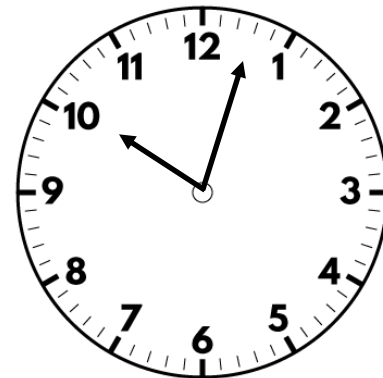


1) Write one half as a percentage.

2) Calculate 0.8×6

3) What are the coordinates of the point?

4) Write down two factors of 12

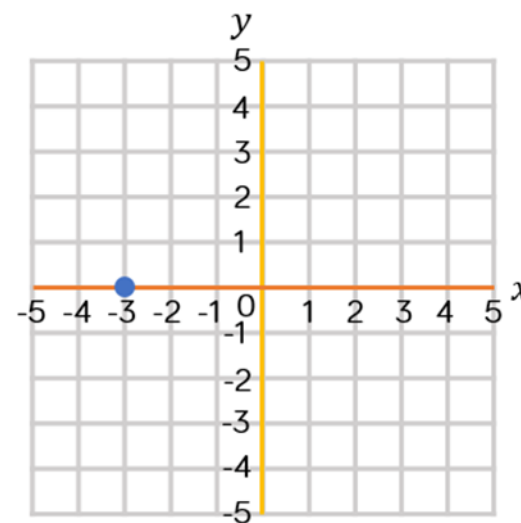
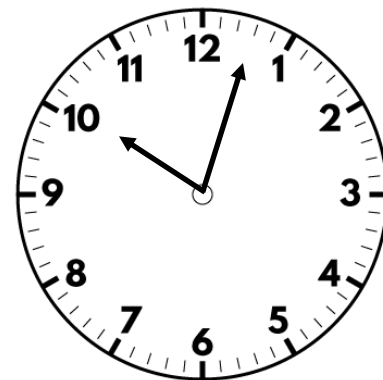


1) Write one half as a percentage. **50%**

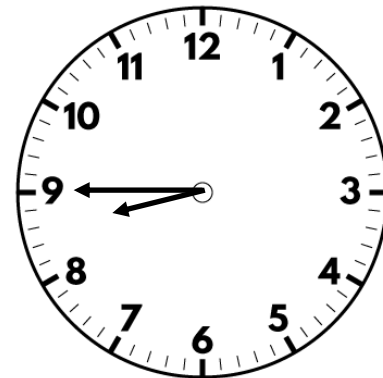
2) Calculate 0.8×6 **0.48**

3) What are the coordinates of the point?
 $(-3, 0)$

4) Write down two factors of 12
Any two of 1, 2, 3, 4, 6 and 12



- 1) Write one quarter as a percentage.
- 2) Work out 7×0.09
- 3) Multiply $\frac{1}{4}$ by 3
- 4) What is the 6 worth in the number 4, 623?



1) Write one quarter as a percentage.

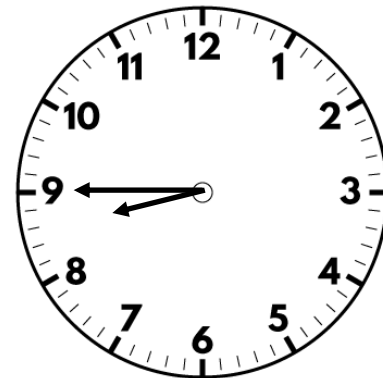
25%

2) Work out 7×0.09 0.63

3) Multiply $\frac{1}{4}$ by 3 $\frac{3}{4}$

4) What is the 6 worth in the number 4, 623?

6 hundred



Flashback 4

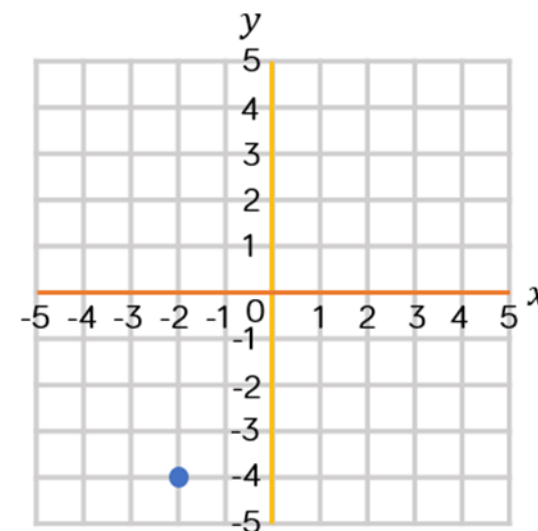
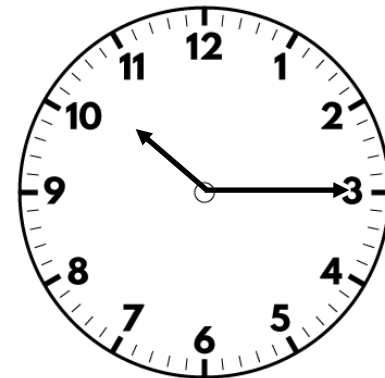
Year 6 | Week 6 | Day 5

1) Write 35% as a decimal.

2) What is 2.7×5 ?

3) What are the coordinates of the point?

4) What is $324 \div 4$?



1) Write 35% as a decimal. **0.35**

2) What is 2.7×5 ? **13.5**

3) What are the coordinates of the point?
 $(-2, -4)$

4) What is $324 \div 4$? **81**

