



- Detached Family Home
- Prominent Cricklade Location
- Flexible Accommodation
- Generous Corner Plot

133 High Street, Cricklade, Swindon, SN6 6AQ

Asking Price Of £470,000

A Five Bedroom Detached home, Situated in the High Street Market Town of Cricklade. This deceptively spacious and Well Proportioned home benefits from a Generous Plot with Gardens Front & Rear. Off Road Parking and Potential for Extension (subject to permission). The accommodation briefly comprises: Entrance Hall, Ground Floor Shower Room, Two Ground Floor Bedrooms, Living Room, Dining Room, Kitchen & Utility. Three Bedrooms to the First Floor with En-Suite and Family Bathroom. uPVC Double Glazing & Gas Central Heating. NO CHAIN. 01793 751 044



Property Description

ENTRANCE HALLWAY

Welcoming hallway with wall mounted radiator, access to the stairwell and under stairs cupboard.

SHOWER ROOM & WC

uPVC double glazed window to the side elevation, shower cubicle, dual flush WC and wall mounted hand basin. Wall mounted heated towel rail.

KITCHEN / BREAKFAST ROOM

16' 0" x 10' 5" (4.88m x 3.20m) uPVC double glazed window to both side and rear elevation. Range of work-spacing with a compliment of wall mounted base and drawer space units. Inset sink with single drainer and tiled splash backs. Built in hob and electric oven. Integrated microwave, under floor heating. Access to:

UTILITY ROOM

7' 2" x 5' 9" (2.20m x 1.77m) uPVC double glazed window to the side elevation, wall mounted gas fired boiler. Storage for additional white goods.

LIVING ROOM

23' 1" x 10' 11" (7.05m x 3.35m) Dual aspect with uPVC double glazed window to the front and Patio doors to the rear elevation, Inset feature cast iron dual fuel burner

BEDROOM THREE (GROUND-FLOOR)

12' 0" x 10' 2" (3.67m x 3.10m) uPVC double glazed window to the front elevation, wall mounted radiator.

BEDROOM FOUR

10' 10" x 9' 10" (3.31m x 3.02m) uPVC double glazed window to the front elevation, wall mounted radiator.

FIRST FLOOR LANDING

access to the following:





MASTER BEDROOM

15' 3" x 15' 1" (4.66m x 4.61m) uPVC double glazed window to the rear elevation, wall mounted radiator. Two built in storage cupboard and double wardrobes.

ENSUITE BATHROOM

12' 0" x 5' 6" (3.67m x 1.70m) uPVC double glazed frosted window to the rear elevation, separate shower cubicle and panelled bath. Pedestal wash hand basin, low level flush WC. Wall mounted radiator.

BEDROOM TWO

12' 11" x 10' 0" (3.96m x 3.06m) uPVC double glazed window to the front elevation, wall mounted radiator. Into eave storage.

BEDROOM FIVE

7' 2" x 6' 8" (2.20m x 2.05m) uPVC double glazed window to the rear elevation, wall mounted radiator.

FAMILY BATHROOM

uPVC double glazed frosted window to the rear elevation, panelled bath, low level flush WC and pedestal wash hand basin and wall mounted heated towel rail.

FRONT GARDEN

Open expanse with mature lawn and driveway parking for numerous vehicles, side gated access to both sides of the property.

REAR GARDENS

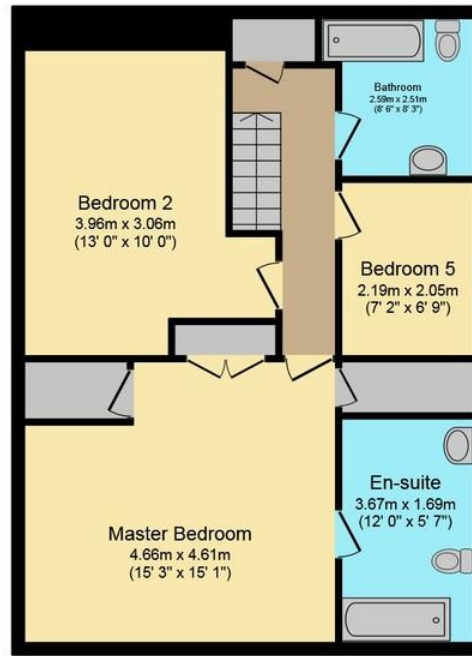
Enclosed rear gardens with mature lawn and patio area, enclosed by mature hedgerow and timber fencing.





Ground Floor

Floor area 83.0 sq. m. (893 sq. ft.) approx



First Floor

Floor area 76.0 sq. m. (818 sq. ft.) approx

Total floor area 159.0 sq. m. (1,711 sq. ft.) approx

This Floor Plan is for illustration purposes only and may not be representative of the property. The position and size of doors, windows and other features are approximate. Unauthorized reproduction prohibited. © PropertyBOX

Score	Energy rating	Current	Potential
92+	A		
81-91	B		
69-80	C		80 c
55-68	D	62 d	
39-54	E		
21-38	F		
1-20	G		

102 High Street, Cricklade,
Swindon, Wiltshire, SN6 6AA

www.mcfarlaneproperty.com
01793 751044
sales@mcfarlaneproperty.com

Agents Note: Whilst every care has been taken to prepare these sales particulars, they are for guidance purposes only. All measurements are approximate and for general guidance purposes only and whilst every care has been taken to ensure their accuracy, they should not be relied upon and potential buyers are advised to recheck the measurements