



3 Bedroom Period Cottage

Widham, Purton, Swindon, SN5 4HP

Asking Price Of £185,000

mcfarlane
property.com

3 Bedroom Period Cottage Purton, Wiltshire SN5

- Three Bedroom Period Cottage
 - Character Features & Charm
 - Kitchen / Breakfast Room
-

A Period Attached Cottage on the Outskirts of Purton Village. This Property is in a Semi Rural Setting with access to neighbouring Countryside. There is a great deal of a Charm and Feature to this Home to include Slate Flooring, Feature Exposed Fireplace, Stable door etc. A summary of accommodation comprises: Entrance Hallway, Ground Floor Bathroom, Kitchen / Breakfast Room, Living Room, to the First Floor there are Three Bedrooms. uPVC Double Glazed Windows and Gas Fired Central Heating. Vacant Possession. Please be aware there are NO GARDENS to this property, however there are bridlepaths and public footpaths in the area.



Property description

ENTRANCE HALLWAY

8' 6" x 4' 9" (2.6m x 1.45m) Painted stable door to the front, tiled flooring plus uPVC double glazed window to the side elevation. Wall mounted radiator access to:

KITCHEN / BREAKFAST ROOM

11' 5" x 8' 11" (3.5m x 2.72m) Signature room with uPVC Double glazed window to the front elevation. Feature fireplace and surround. Roll top work surfacing with a range of wall mounted, base and drawer space units. Inset coloured sink and drainer, plus electric four ring hob and oven with extractor fan over. Peninsular breakfast bar and continued slate style flooring from hallway. Wall mounted radiator.

LIVING ROOM

11' 9" x 11' 1" (3.6m x 3.4m) Two uPVC double glazed windows to the front elevation, feature fireplace with exposed red brick. Further feature timbers, plus wall mounted radiator.

HALF LANDING

uPVC double glazed window to the side elevation. Access to the following rooms:

MASTER BEDROOM

11' 11" x 10' 3" (3.65m x 3.13m) uPVC double glazed window to the front elevation, wall mounted radiator. Feature fire front and surround.

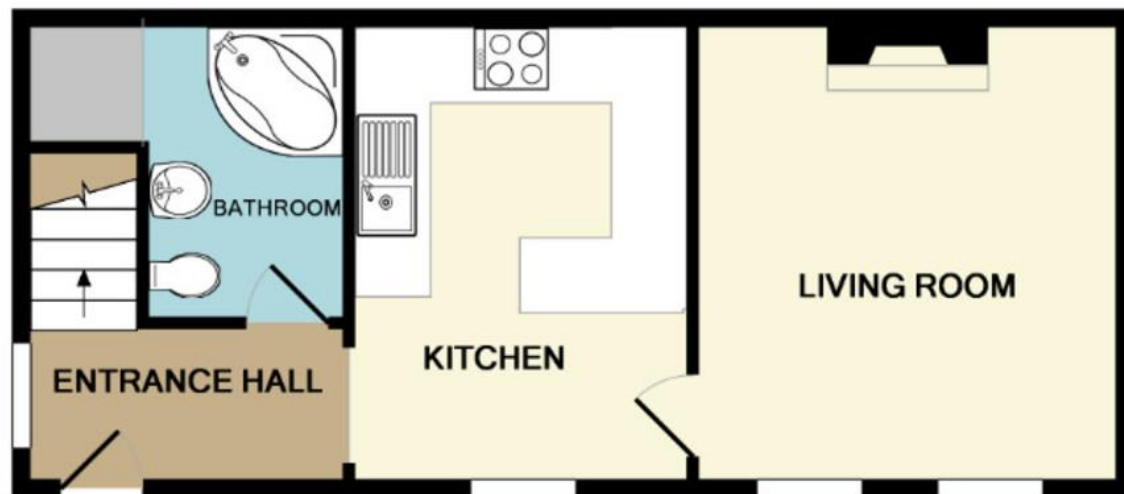
BEDROOM TWO

10' 2" x 9' 4" (3.12m x 2.85m) uPVC double glazed window to the front elevation, wall mounted radiator and built-in storage cupboard.

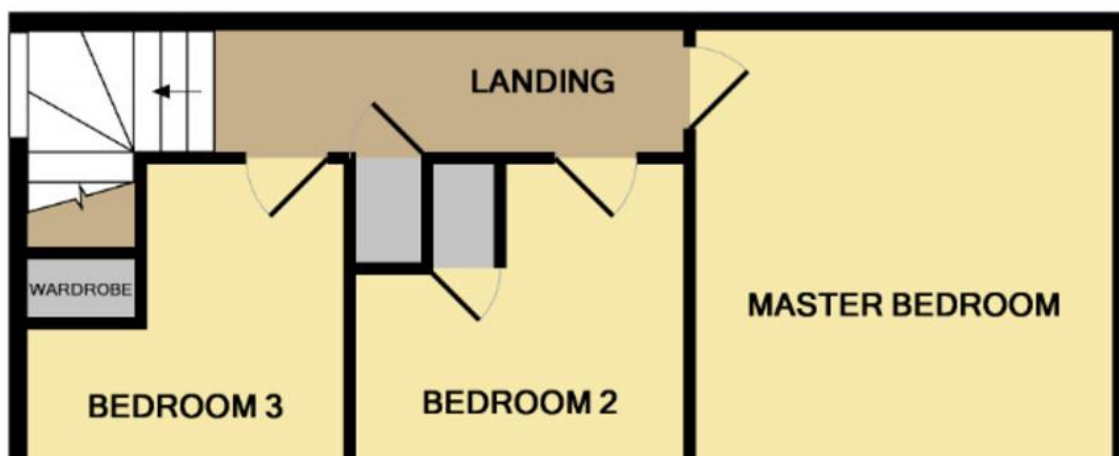
BEDROOM THREE

9' 10" x 8' 8" (3.00m x 2.65m) uPVC double glazed window to the front elevation plus further built-in storage cupboard. L shaped room. Wall mounted radiator.





GROUND FLOOR



mcfarlane
property.com

Swindon.
28-30 Wood Street
Swindon SN1 4AB
☎ 01793 611841

Cricklade.
102 High Street
Cricklade SN6 6AA
☎ 01793 751044

Marlborough.
106 High Street
Marlborough SN8 1LT
☎ 01672 514380

We 
where you
LIVE

Our team are friendly, experienced and are all local. They know it better than they do their own living rooms and can help you find what you're looking for because **we love where we live.**

We would be delighted to show you around this property.

**Because every home
needs a personal touch.**

Tim Stanley
Sales Manager, Cricklade



☎ 01793 751044

✉ tim@mcfarlaneproperty.com

mcfarlaneproperty.com

Agents Note: Whilst every care has been taken to prepare these sales particulars, they are for guidance purposes only. All measurements are approximate are for general guidance purposes only and whilst every care has been taken to ensure their accuracy, they should not be relied upon and potential buyers are advised to recheck the measurements