

**OPEN BANKING
EUROPE SOLUTION
AND ONBOARDING**

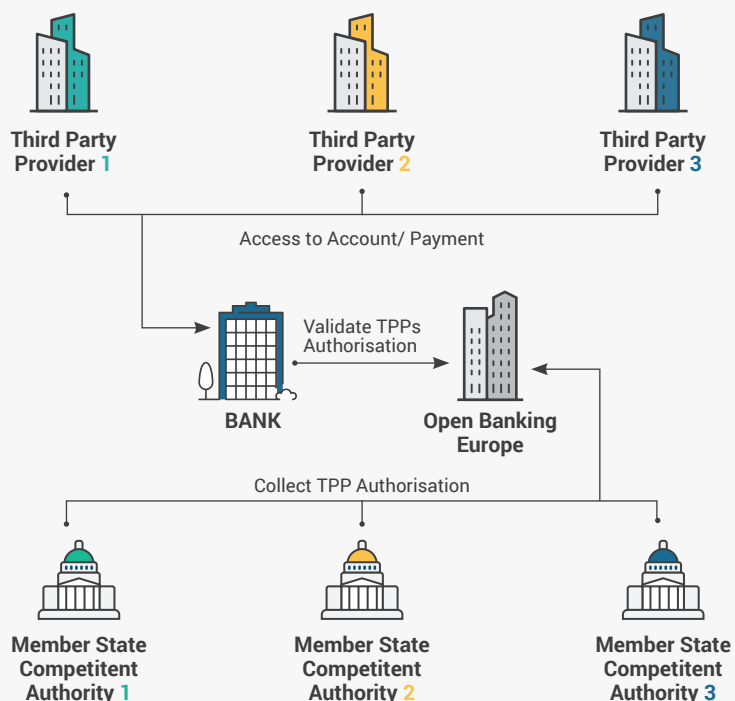
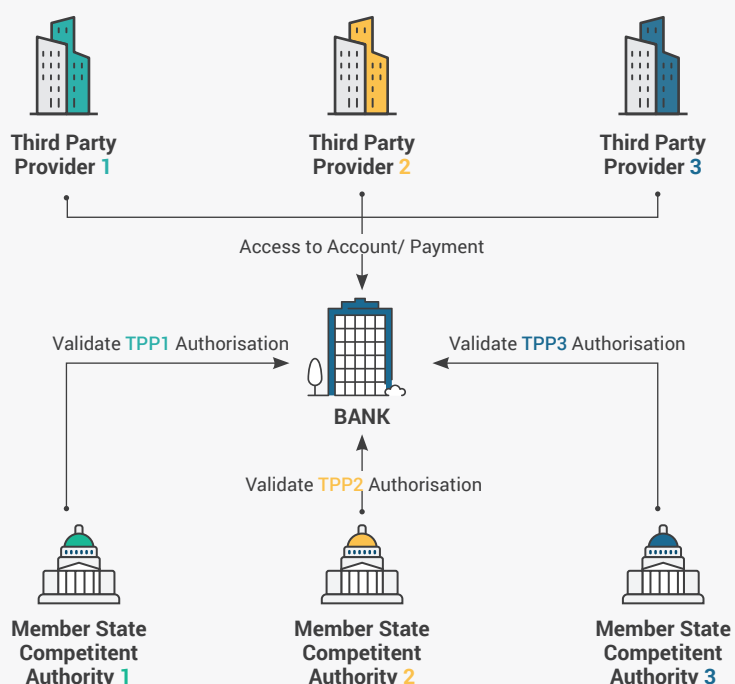


CHALLENGE FOR PARTICIPANTS IN PSD2?

PSD2 mandate the participants TPPs must register with home MSCA and acquire authorisation for the desired roles. Participant ASPSPs must check the TPPs authorisation before granting them access for Account or Payment resources. This model put a lot of extra work and complexity on ASPSPs as there are 31 MSCAs with no standard interface to perform validation for TPPs. In current state lack of centralised directory service also impact TPPs as they will struggle to discover the information for the participant ASPSPs.

HOW IS OPEN BANKING EUROPE (OBE) HELP SOLVE THE DECENTRALISED PROBLEM?

Open Banking Europe provides a centralised solution with standard interface for ASPSPs to get information about the TPPs. TPPs can discover information about the ASPSPs. OBE also provide facility to store contact person information for both TPPs and ASPSPs.



HOW DO YOU REGISTER WITH OPEN BANKING EUROPE (OBE)?

Open Banking Europe provide two participation models:

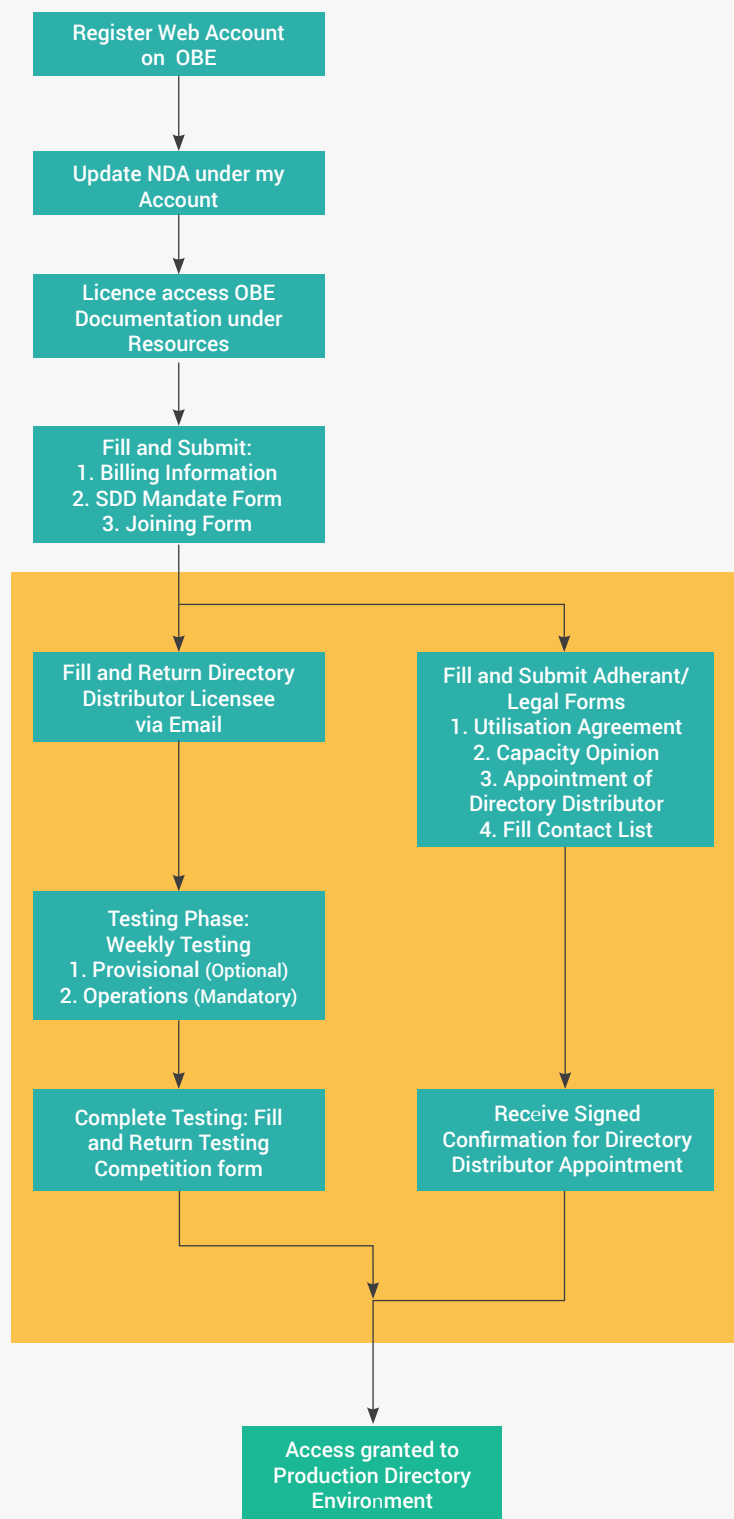
- Licensees must be Regulated Entities and acquire their License from PRETA. They will access the Directory through a Directory Distributor, who will either be themselves or registered third party.
- Directory Distributors are typically Banking Groups or Service Providers that manage data for multiple entities. They can purchase their specific package from PRETA and access the Directory on behalf of Licensees to whom they provide services, including themselves.

OBE provides web-based registration process for various regulated entities to participate. Following flow chart show the step-by-step instructions and documentation required during the onboarding.

On completion of all the steps and submission of relevant documentation, production environment access will be granted to Licensee or Directory Distributors. Please follow the link to get onboarded with OBE

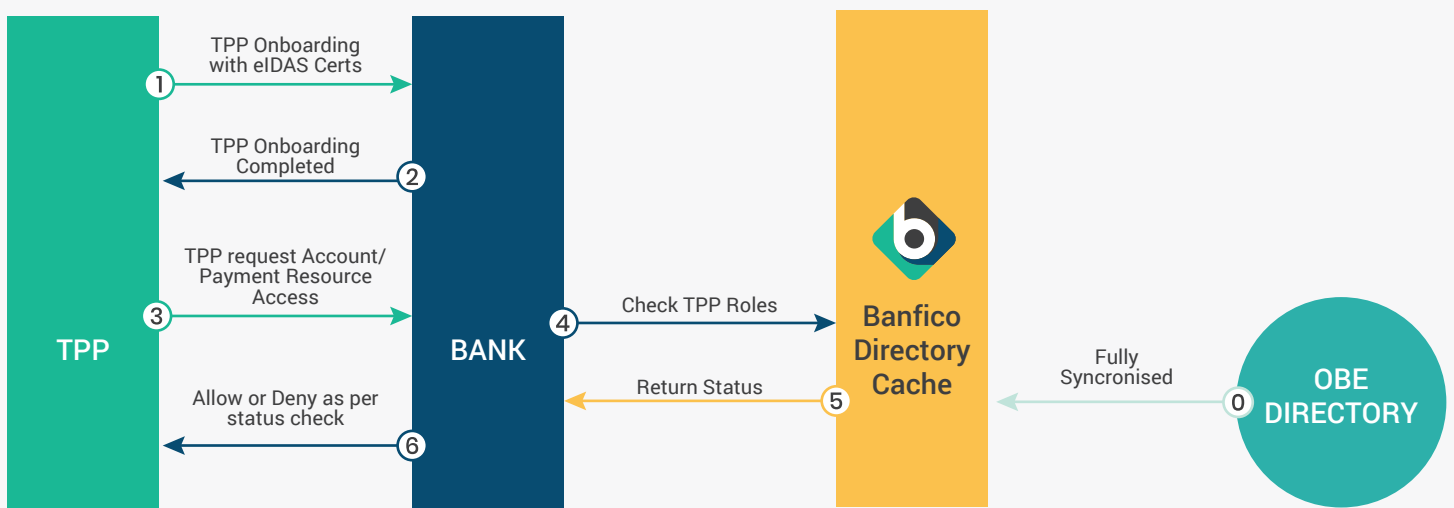
<https://www.openbankingeurope.eu/sign-in/>

ONBOARDING STEPS TO OBE



WHY LOCAL DIRECTORY CACHE IS REQUIRED AND HOW-TO SETUP?

Open Banking Europe acts as a centralised source of information on the TPPs regulated status which it collects from 31 MSCA on regular bases. OBE expect the ASPSPs will maintain a local cache for TPP validations and keep the cache updated with OBE data as required.



Banfico has built highly scalable directory cache/TPP registry solution which can be deployed in Cloud or On Premises.

TPP Registry features as following:

- Support REST API to validate TPP status.
- Support Full download from PRETA.
- Support call-backs to receive notifications from PRETA.
- Support real-time check against PRETA.
- Support scheduled update against PRETA.