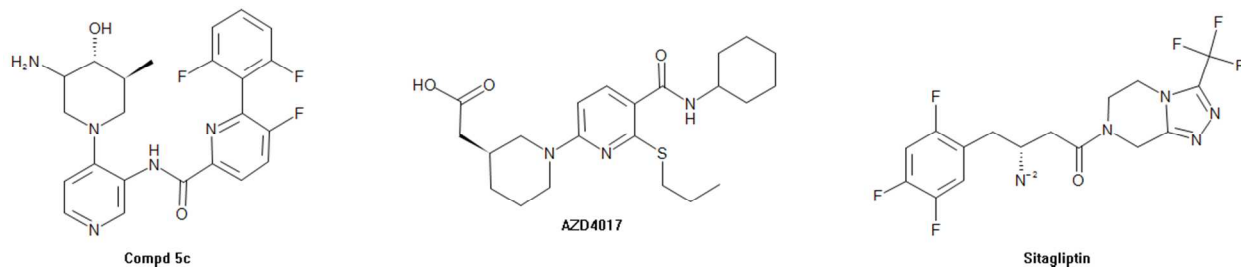


## Supporting Information



**Figure S1:** Representative structures of compounds from each series. Compound 5c was reported by Burger et al as PIM Kinase inhibitor. AZD4017 represents 11 $\beta$ -HSD1 inhibitor series while Sitagliptin represents the DPP4 inhibitor series.

C(=O)(c1nc(-c2c(F)cccc2F)c(F)cc1)Nc3c(N4CC([C@H](O)[C@H](C4)C)N)ccnc3 (Compound 5c)

C(=O)(c1c(SCCC)nc(N2C[C@H](CC(=O)O)CCC2)cc1)NC3CCCCC3 (AZD4017)

C(=O)(N1Cc2nnc(C(F)(F)F)n2CC1)C[C@H]([N-2])Cc3c(F)cc(F)c(F)c3 (Sitagliptin)