

SUPPORTING INFORMATION

Redox-Responsive Core Cross-Linked Block Copolymer Micelles for Overcoming Multidrug Resistance in Cancer Cells

Chiranjit Maiti[†], Sheetal Parida[‡], Shibayan Kayal[†], Saikat Maiti[†], Mahitosh
Mandal[‡] and Dibakar Dhara^{†*}

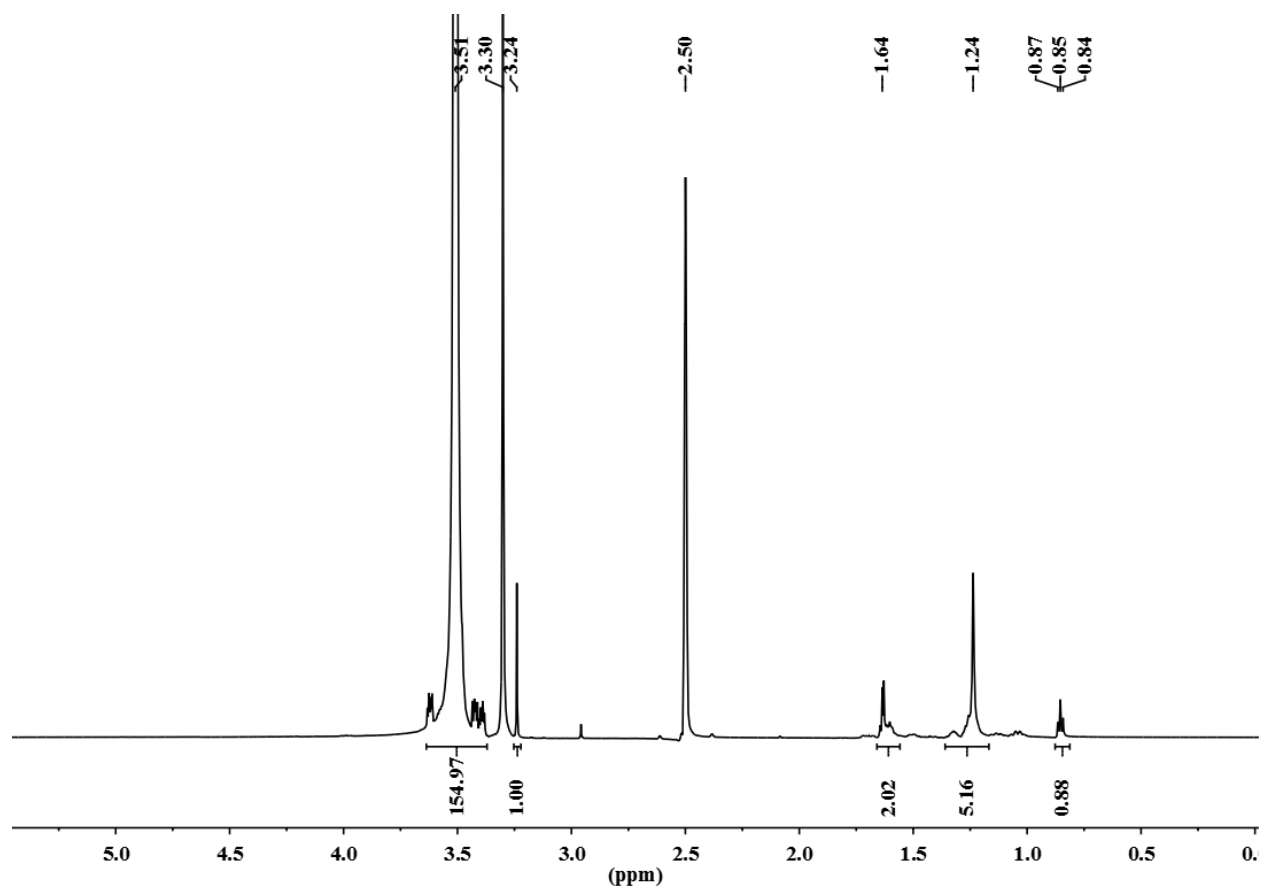
[†]Department of Chemistry

[‡]School of Medical Science and Technology

Indian Institute of Technology Kharagpur

West Bengal 721302 India

Email: dibakar@chem.iitkgp.ernet.in, dibakar@live.in

Synthesis of Poly(PEGMA)-Based Macro-Chain Transfer Agent (CTA) (Scheme 1).**Figure S1:** ^1H NMR spectra (in DMSO-d_6) of PEG macro-CTA.

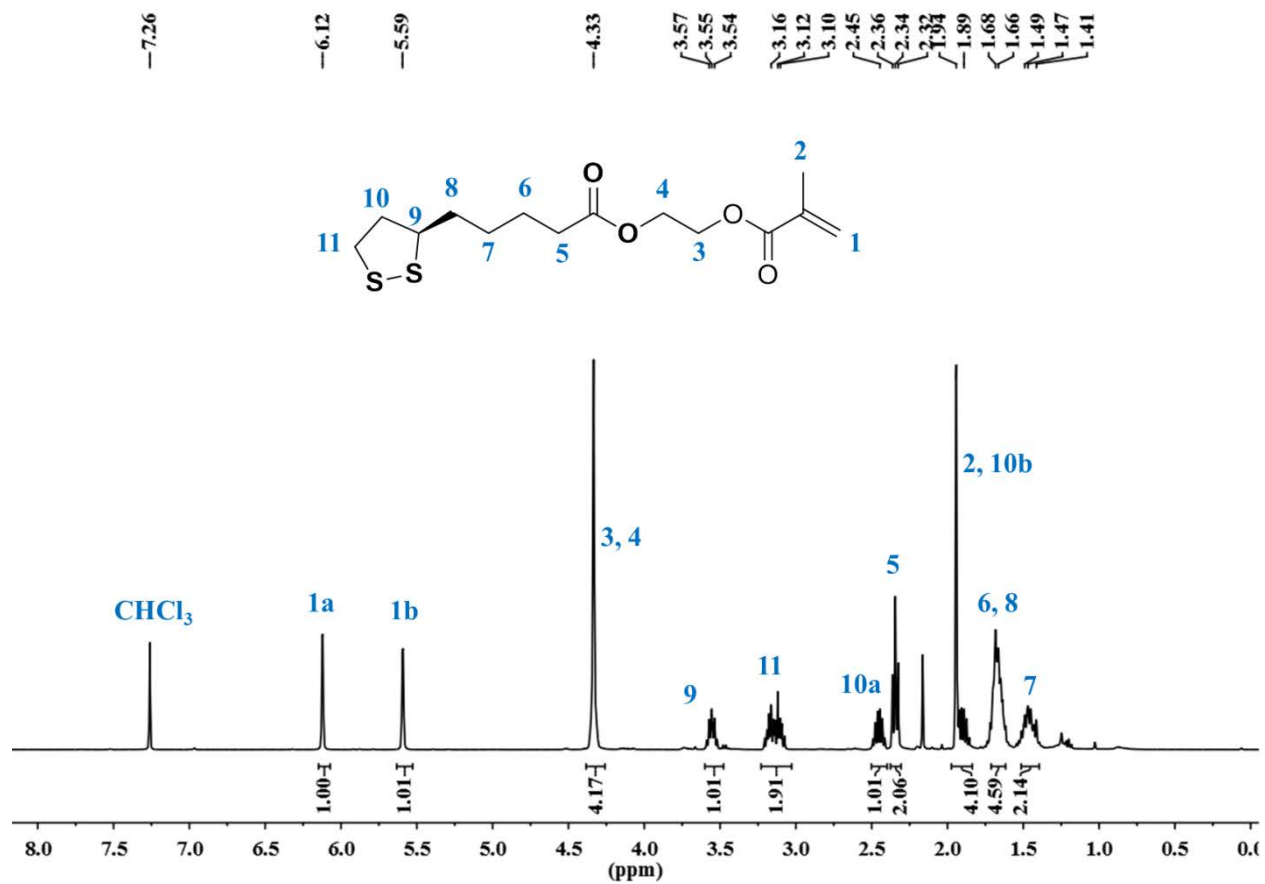


Figure S2: ^1H NMR spectra (in CDCl_3) of LAHEMA.

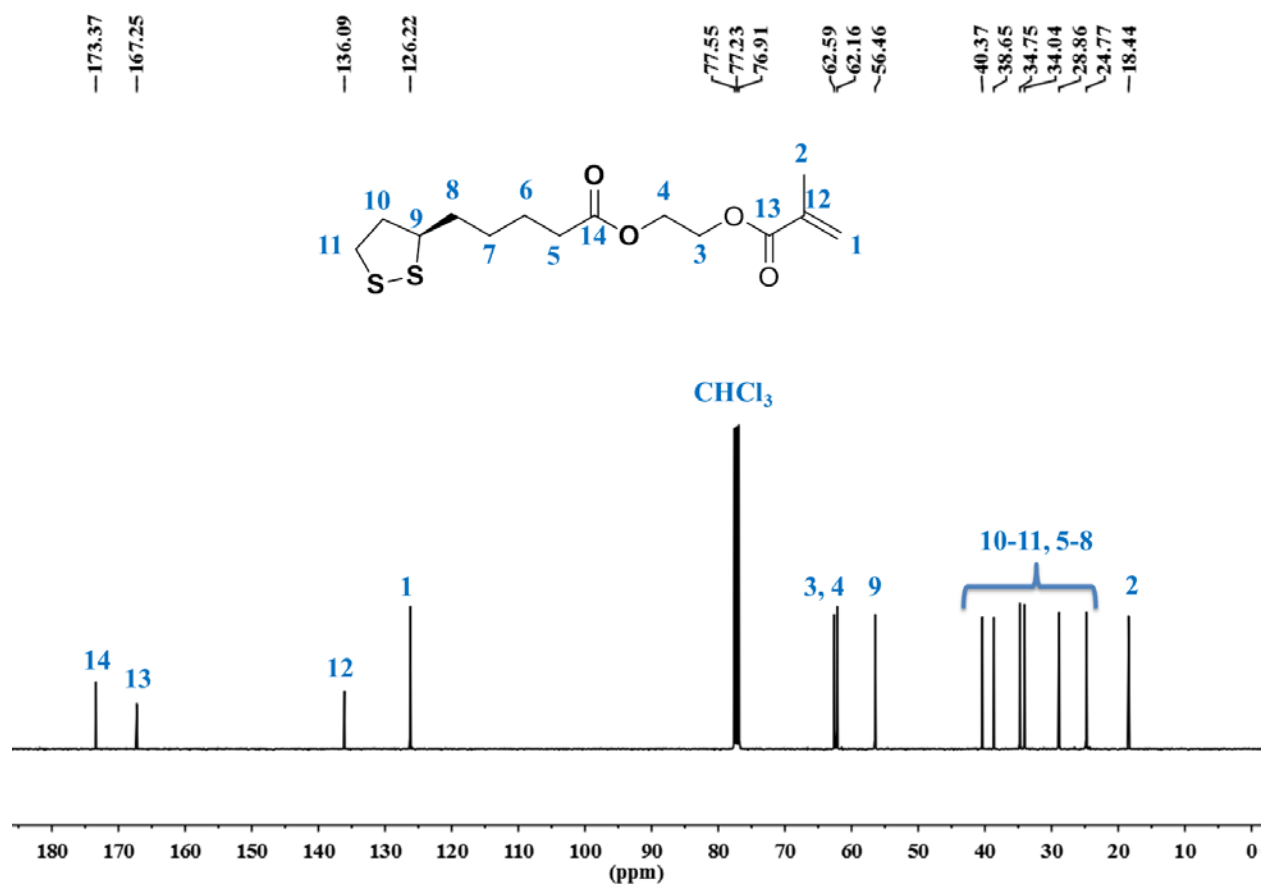


Figure S3: ^{13}C NMR spectra (in CDCl_3) of LAHEMA.

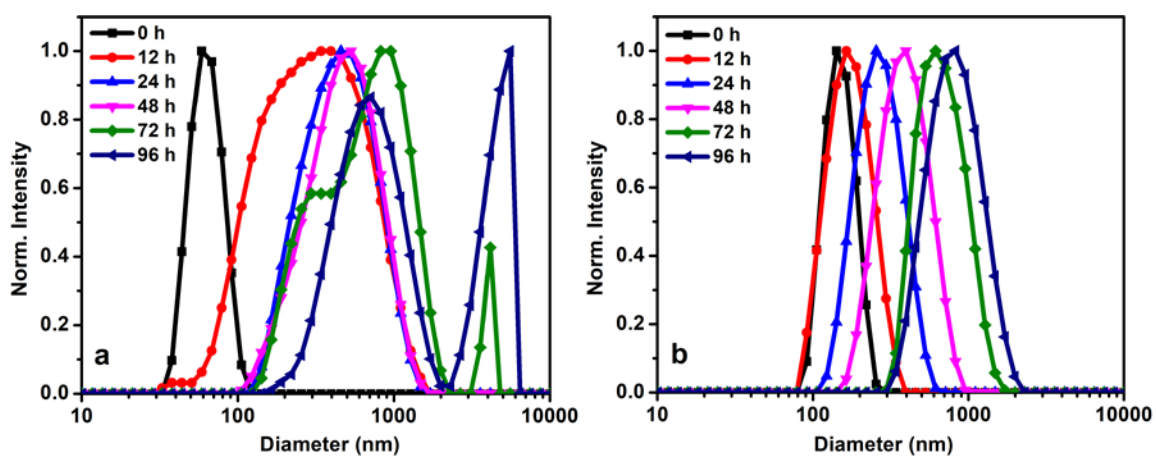


Figure S4: Hydrodynamic size distribution profiles of the cross-linked micelles BCP26 (a) and BCP83 (b) measured by DLS due to swelling in response to 10 mM GSH with time in PB (pH 7.4, 10 mM) at 37 °C.

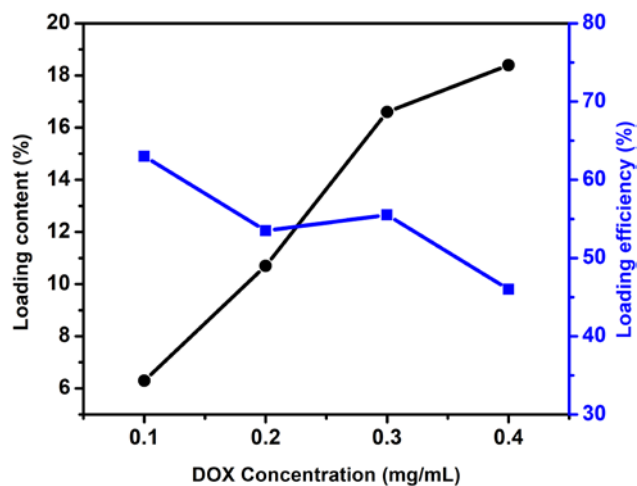


Figure S5: Variation of loading content and loading efficiency of DOX with varying DOX concentration in nanocarrier (BCP26) having fixed concentration of 1 mg/mL with maintaining cross-linking GSH concentration in PB (pH 7.4, 10 mM) at 37 °C. DOX loading efficiency was calculated based on the equation $LE (\%) = \frac{\text{Weight of DOX into the micelle}}{\text{Weight of DOX feed}} \times 100$.