

Supporting Information

Environmentally-friendly Polylactic Acid-based Thermal Insulation

Foams Blown with Supercritical CO₂

Pengjian Gong^{1,2*}, Shuo Zhai^{1,2}, Richard Lee², Chongxiang Zhao², Piyapong

Buahom², Guangxian Li¹ and Chul B. Park^{2*}

1. *College of Polymer Science and Engineering, Sichuan University, 24 Yihuan Road, Nanyiduan, Chengdu, Sichuan, People's Republic of China, 610065*
2. *Microcellular Plastics Manufacturing Laboratory, Department of Mechanical and Industrial Engineering, University of Toronto, 5 King's College Road, Toronto, Ontario, Canada M5S 3G8*

* Corresponding authors: Chul B. Park. Email address: park@mie.utoronto.ca. Tel: +1-416-978-3053;

Pengjian Gong. Email address: pgong@scu.edu.cn. Tel: +86-181-8075-6171

The IR transmittance and reflectance of the PLA film were measured using FTIR and the data are shown in Figure S1. These data were used to calculate the absorption index of the PLA matrix.

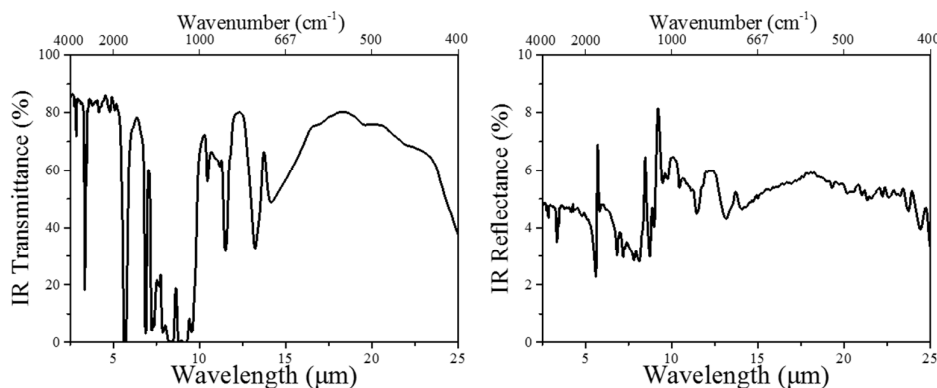


Figure S1 IR transmittance and reflectance of PLA film

Five representative wavelengths were selected as examples to show how $K_{e,\lambda}$ was calculated. By the linear regression of the $\ln(\tau_{n,\lambda})$ at each wavelength against the foam thickness, L , the slope of the straight line is $K_{e,\lambda}$, as shown in Figure S2.

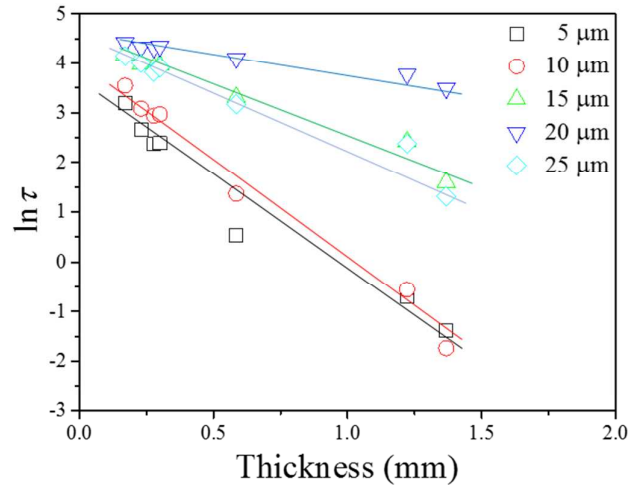


Figure S2 Transmittance of PLA foams as a function of the foam thickness.

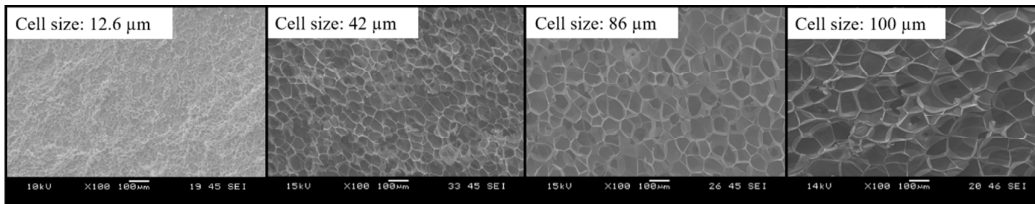


Figure S3 SEM micrographs of PLA foams

When the cell size in PLA foams is less than 3 mm, the convection in the small cells is negligible,¹ and the PLA foams' total thermal conductivity (k_{total}) can be expressed as follows:

$$k_{total} = k_{gas} + k_{solid} + k_{rad} \quad (S1)$$

where k_{gas} and k_{solid} are the thermal conductivities via gas and solid conduction, respectively. k_{rad} is the thermal conductivity by radiation.

The PLA foams' gas conductivity is as follows:²

$$k_{gas} = \varepsilon_{VF} k_{gas}^0 \quad (S2)$$

where ε_{VF} is the void fraction of the PLA foam and k_{gas}^0 is the bulk gas conductivity, 26 mW/m-K for air.

Along with cell growth, the original spherical cells after nucleation will become polygonal when the PLA foam has a large void fraction, typically the ε_{VF} is over 94%. In this case, the heat transfer through the cells can be simplified by using Glicksman's model.^{1, 3, 4} This model assumes that the cells are cubic and that the heat flux only passes through 4 faces and 4 struts of the cubic cell. Therefore, the solid conductivity can be expressed as follows:⁴

$$k_{solid} = (1 - \varepsilon_{VF}) \left(\frac{2 - f_s}{3} \right) k_{solid}^0 \quad (S3)$$

where f_s is the strut fraction. The k_{solid}^0 is the bulk solid conductivity.

The transmitted radiative energy can be obtained from the transmittance of IR radiation through the polymeric foams. In polymeric foams, the reflected radiation will be multi-reflected inside the porous structure. Therefore, the radiative thermal conductivity can be calculated using the Rosseland equation, which is based on a diffusion approximation.^{2, 3, 5} The uniform PLA foams can be regarded as homogeneous samples from a macroscopic perspective. Then, the spectral extinction coefficient ($K_{e,\lambda}$) is independent of the foam thickness. The transmittance ($\tau_{n,\lambda}$) can be expressed as follows:^{6, 7}

$$\tau_{n,\lambda} = c e^{(-\int_0^L K_{e,\lambda} dx)} \quad (S4)$$

where L is the sample thickness, and c is constant. According to the Planck distribution of IR radiation over the wavelength, the Rosseland extinction coefficient ($K_{e,R}$) has an average of $K_{e,\lambda}$ as follows:^{8, 9}

$$\frac{1}{K_{e,R}} = \frac{\int_0^\infty \frac{1}{K_{e,\lambda}} \frac{\partial e_{b,\lambda}}{\partial T} d\lambda}{\int_0^\infty \frac{\partial e_{b,\lambda}}{\partial T} d\lambda} = \int_0^\infty \frac{1}{K_{e,\lambda}} \frac{\partial e_{b,\lambda}}{\partial e_b} d\lambda \quad (S5)$$

$$\frac{\partial e_{b,\lambda}}{\partial e_b} = \frac{\pi C_1 C_2 \sigma^{1/4} \exp(C_2/\lambda T)}{2 \lambda^6 e_b^{5/4} [\exp(C_2/\lambda T) - 1]^2} \quad (S6)$$

$$e_b = \sigma T^4 \quad (S7)$$

where C_1 and C_2 are constant, $5.96 \times 10^7 \text{ W}\cdot\mu\text{m}^4/\text{m}^2$ and $1.44 \times 10^4 \mu\text{m}\cdot\text{K}$, respectively. The σ is Stefan-Boltzmann's constant, $5.67 \times 10^{-8} \text{ W}/\text{m}^2\cdot\text{K}^4$ and $e_{b,\lambda}$ is the local spectral energy.

Based on the Rosseland extinction coefficient, the k_{rad} through the polymeric foams can be expressed as follows:^{10, 11}

$$k_{rad} = \frac{16n_{ref}^2\sigma T^3}{3K_{e,R}} \quad (S8)$$

where n_{ref} is the effective index of refraction. Due to the high void fraction in PLA foams, the n_{ref} in this study is 1, which has the same value as air.

REFERENCES

- (1) Glicksman, L. R. In *Heat Transfer in Foams*, Low Density Cellular Plastics: Physical Basis of Behavior, 1st Edition, Hilyard, N. C.; Cunningham, A., Eds. Chapman & Hall, London, UK: 1994; pp 104.
- (2) Ferkl, P.; Pokorný, R.; Bobák, M.; Kosek, J. Heat Transfer in One-Dimensional Micro- and Nano-Cellular Foams. *Chem. Eng. Sci.* **2013**, *97*, 50.
- (3) Schuetz, M. A.; Glicksman, L. R. A Basic Study of Heat Transfer Through Foam Insulation. *J. Cell. Plast.* **1984**, *20*, 114.
- (4) Glicksman, L. R.; Torpey, M. Factors Governing Heat Transfer Through Closed Cell Foam Insulation. *J. Build. Phys.* **1989**, *12*, 257.
- (5) Placido, E.; Arduini-Schuster, M. C.; Kuhn, J. Thermal Properties Predictive Model for Insulating Foams. *Infrared. Phys. Techn.* **2005**, *46*, 219.
- (6) Wu, J.; Sung, W.; Chu, H. Thermal Conductivity of Polyurethane Foams. *Int. J. Heat Mass Transfer* **1999**, *42*, 2211.
- (7) Tseng, C.; Kuo, K. Thermal Radiative Properties of Phenolic Foam Insulation. *J. Quant. Spectrosc. Radiat. Transfer* **2002**, *72*, 349.
- (8) Faghri, A.; Zhang, Y.; Howell, J. R. *Advanced Heat and Mass Transfer*; Global Digital Press: 2010.
- (9) Mahan, J. R. *Radiation Heat Transfer: A Statistical Approach*; John Wiley & Sons: 2002.
- (10) Campo-Arnáiz, R. A.; Rodríguez-Pérez, M. A.; Calvo, B.; de Saja, J. A. Extinction Coefficient of Polyolefin Foams. *J. Polym. Sci., Part B: Polym. Phys.* **2005**, *43*, 1608.
- (11) Alvarez-Lainez, M.; Rodríguez-Pérez, M. A.; De Saja, J. A. Thermal Conductivity of Open-Cell Polyolefin Foams. *J. Polym. Sci., Part B: Polym. Phys.* **2008**, *46*, 212.