

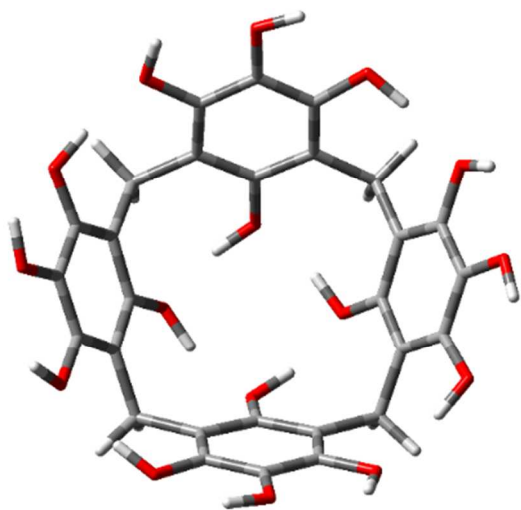
# **Exploring Chimeric Calix[4]tetrolarene Molecular Scaffolds: Theoretical Investigations**

Dipali N. Lande and Shridhar P. Gejji\*

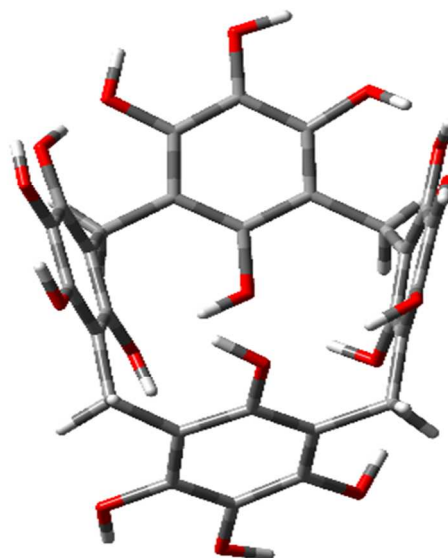
Department of Chemistry, Savitribai Phule Pune University, Pune-411 007, India

---

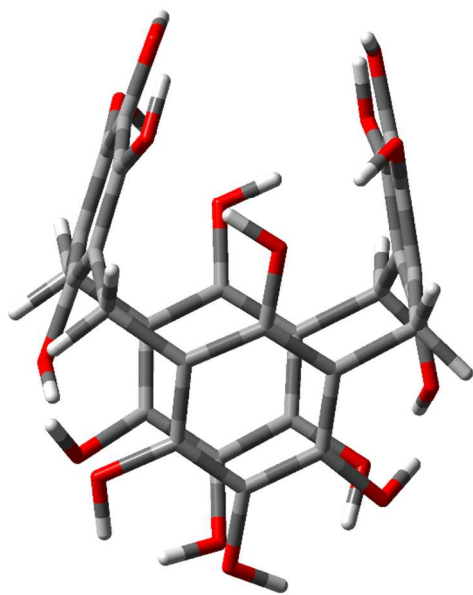
**Supporting Information**



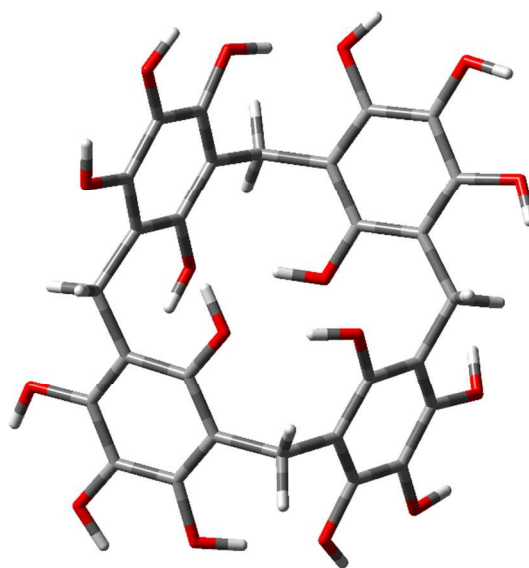
Cone



Partial Cone

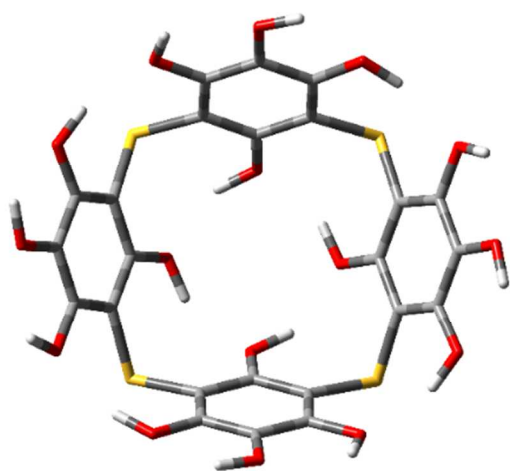


1,3-alternate

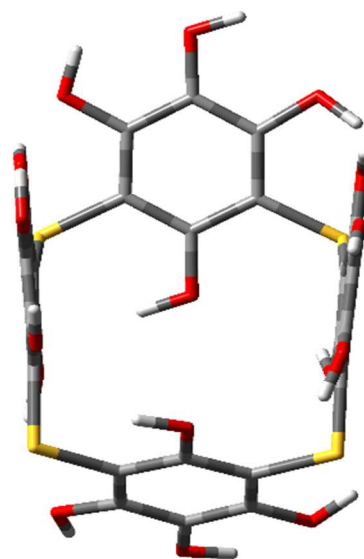


1,2-alternate

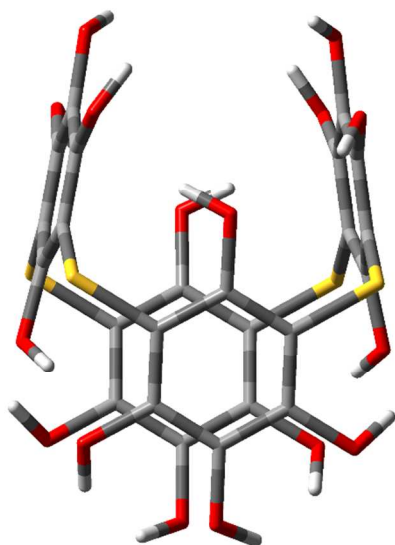
**Figure S1** : Stationary point structures for the host I.



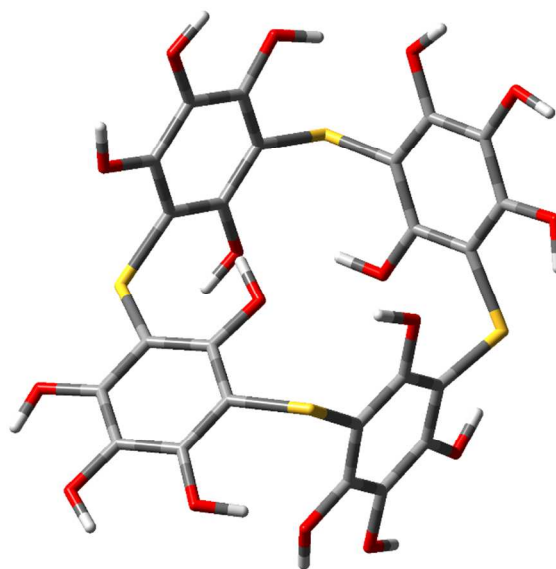
Cone



Partial Cone

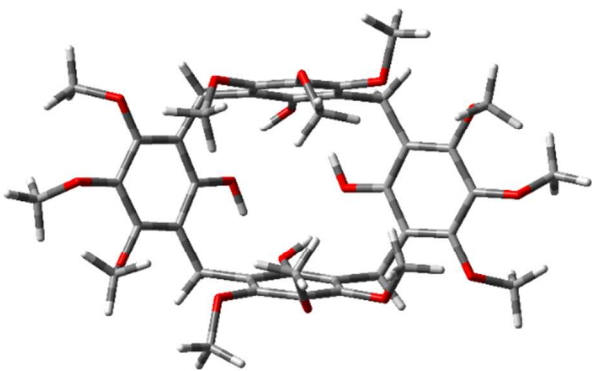


1,3-alternate

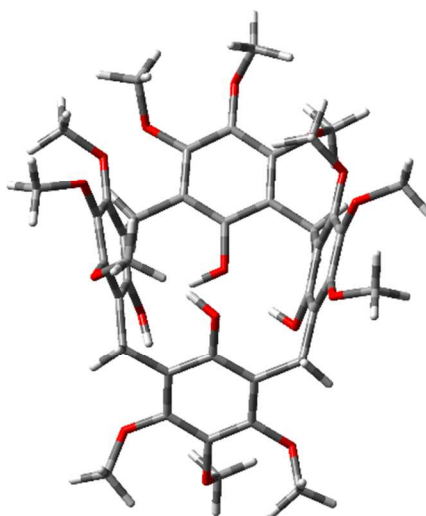


1,2-alternate

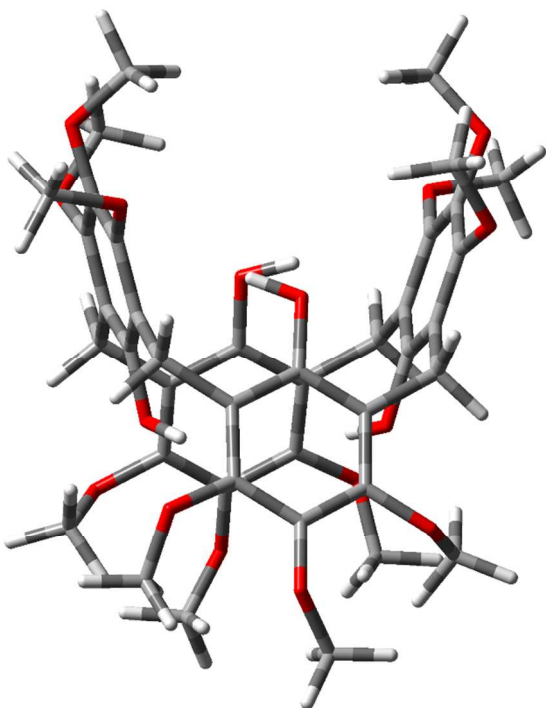
**Figure S2:** Stationary point structures for the host II.



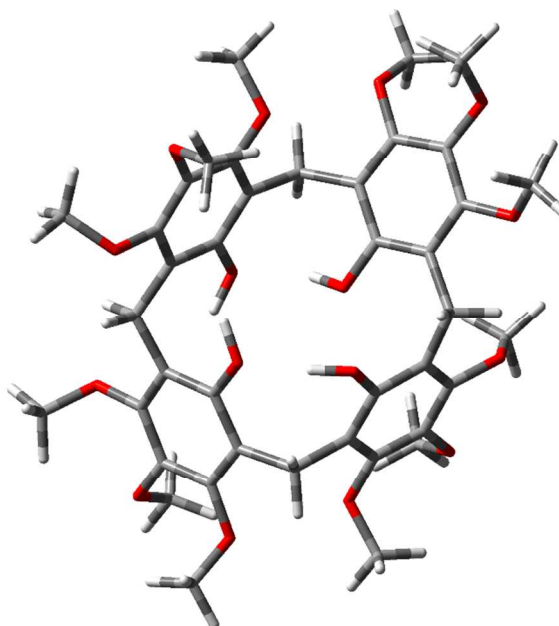
Cone



Partial Cone

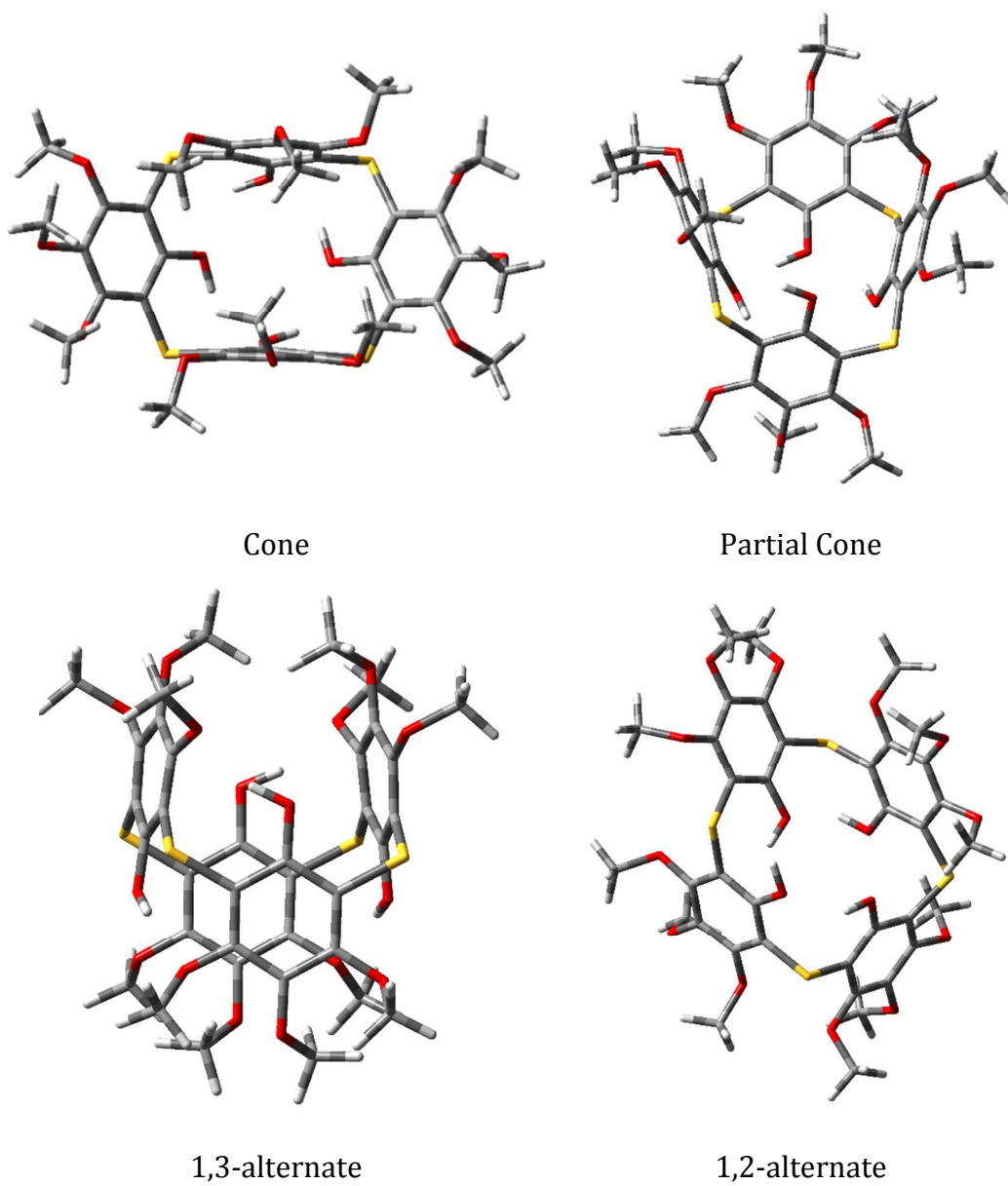


1,3-alternate



1,2-alternate

**Figure S3:** Stationary point structures for the host **III**.



**Figure S4:** Stationary point structures for the host IV.