

Supporting Information

Ultrastable Luminescent Organic-Inorganic Perovskite Quantum Dots via Surface Engineering: Coordination of Methylammonium Bromide and Covalent Silica Encapsulation

Fan-long Zeng,^{1†} Mu Yang,^{1,2†} Jing-lei Qin,¹ Feng Teng,² Yi-quan Wang,¹ Gen-xiang Chen,¹ Da-wei Wang,³ Hong-shang Peng^{1*}

† These authors contributed equally to this project

¹College of Science, Minzu University of China, Beijing, 100081, China.

²Key Laboratory of Luminescence and Optical Information, Ministry of Education, Institute of Optoelectronic Technology, Beijing Jiaotong University, Beijing, 100044, China

³HeBei LedPhor Optoelectronics Technology Co., Ltd, Baoding, 071000, China

*Email: hshpeng@bjtu.edu.cn

Table of Contents

- S1. XRD Characterization of SMAPB-QDs powder
- S2. Optimization of doping ratio of SMAPB-QDs powder in the composite
- S3. HAADF-STEM images of SMAPB-QDs/SiO₂ composite powder and size distribution
- S4. Photostability of SMAPB-QDs/SiO₂ composite powder
- S5. Stability of SMAPB-QDs/SiO₂ composite powder in blue LED device
- S6. Fitting results of PL decays of SMAPB-QDs/SiO₂ composite powder

1. XRD Characterization of SMAPB-QDs powder

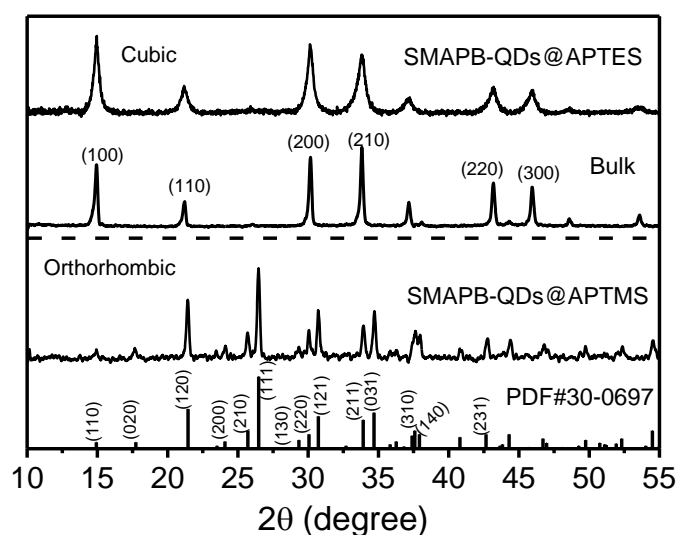


Figure S1. XRD patterns of cubic and orthorhombic SMAPB-QDs prepared with the assistance of APTES and APTMS, respectively. Bulk CH₃NH₃PbBr₃ gives a cubic phase, and the reference lines in the bottom are from JCPDS# 30-0697.

2. Optimization of doping ratio of SMAPB-QDs powder in the composite

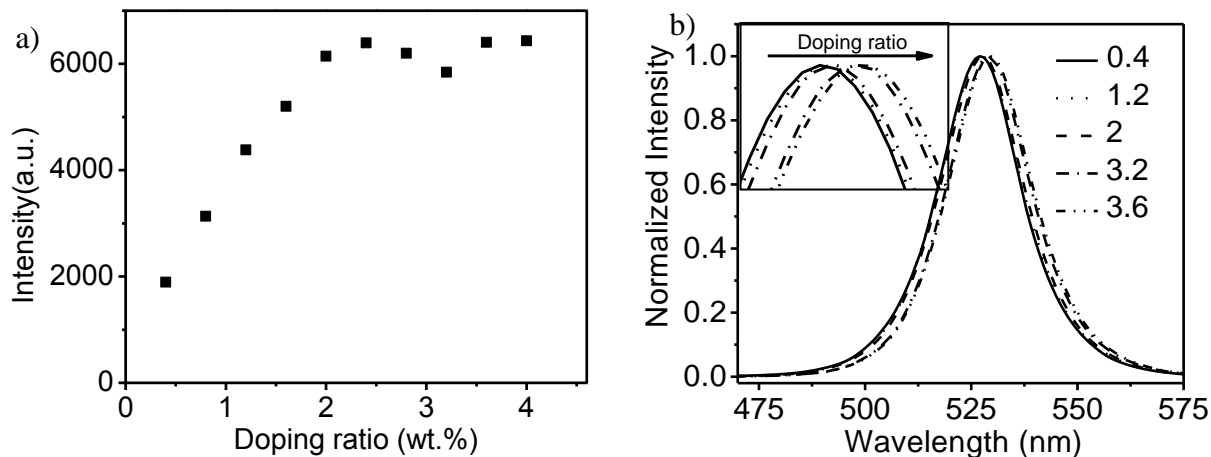


Figure S2. (a) PL intensity SMAPB-QDs/SiO₂ composite versus the doping ratio of QDs. The weight ratio of SMAPB-QDs to silica matrix is 0.4, 0.8, 1.2, 1.6, 2, 2.4, 2.8, 3.2, 3.6 and 4%, respectively. The scatters were the integral of green emissions upon the 405-nm excitation. (b) Normalized emission spectra of the composite powder with different doping ratios. The inset shows the enlarged part of emission peaks.

From Figure S2a it can be seen that PL intensity of SMAPB-QDs/SiO₂ composite powder reaches its maximum value at around 2 wt.%. Higher doping ratio does not evidently increase the PL intensity, mostly because of concentration quenching. On the other hand, however, too many SMAPB-QDs/SiO₂ powders may influence the quality of as-prepared silica gel. Therefore, 2% doping ratio is chosen as the optimal one for the following experiments. With the increase of doping ratios, red-shift of the green emission can be observed clearly in Figure S2b.

3. HAADF-STEM images of SMAPB-QDs/SiO₂ composite powder and size distribution

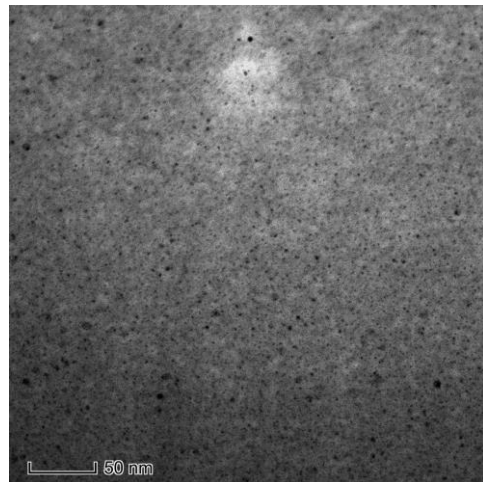
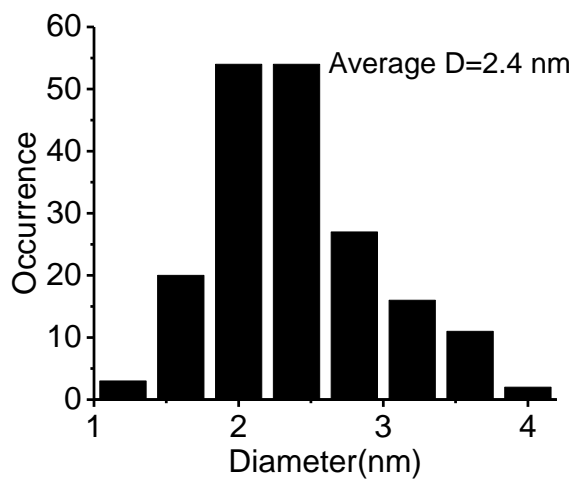


Figure S3. Histogram of particle size of SMAPB-QDs in the silica composite (left). The data are counted from the HAADF-STEM image (right).

4. Photostability of SMAPB-QDs/SiO₂ composite powder

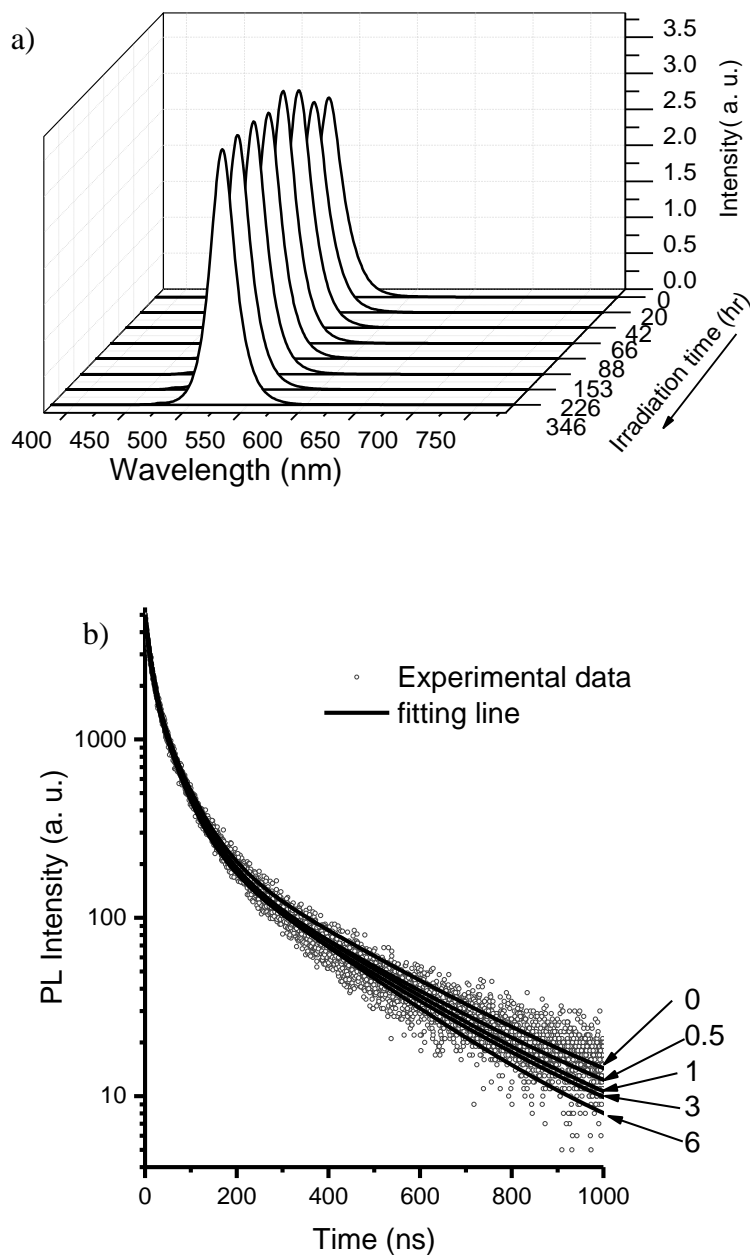


Figure S4. (a) PL emission spectra and (b) time-resolved PL decays of SMAPB-QDs/SiO₂ composite powder under the illumination of a 450-nm light (60 mW/cm²) for different times (N₂-protected). In (a) the spectra were measured at the time of 0, 20, 42, 66, 88, 153, 226 and 346 h, respectively. In (b) the monitored wavelengths are fixed at their respective emission peaks ($\lambda_{\text{ex}}=405$ nm), and measured at the time of 0, 0.5, 1, 3 and 6 h. The data are fitted with a tri-exponential function (solid lines).

5. Stability of SMAPB-QDs/SiO₂ composite powder in blue LED device

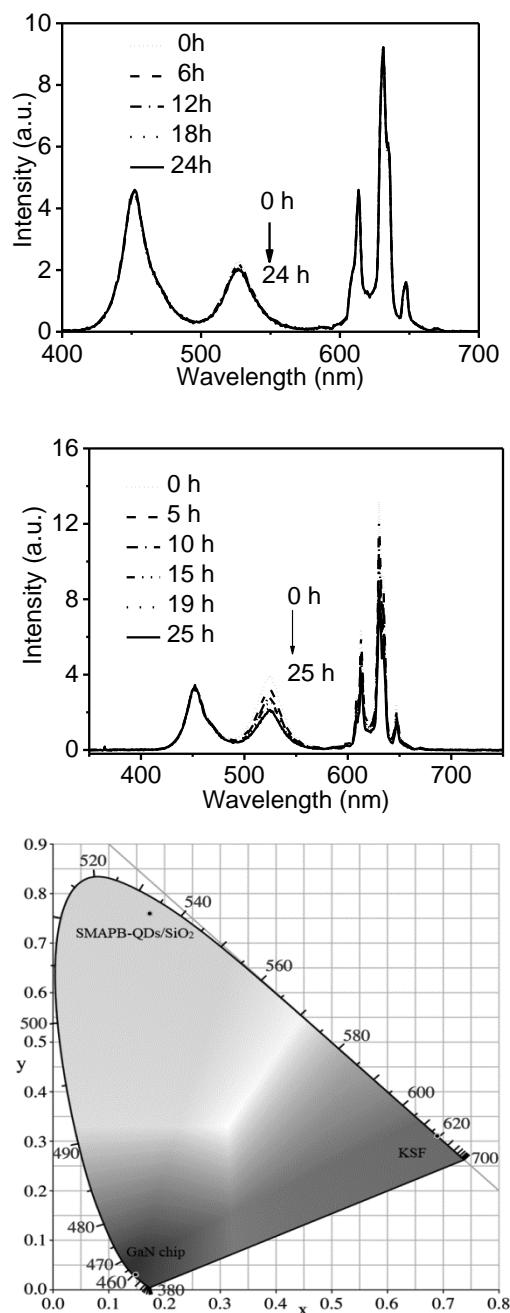


Figure S5. Time-dependent electroluminescence spectra of SMAPB-QDs/SiO₂ composite powder (upper) and primary SMAPB-QDs (middle) in blue LED device. The powders were encapsulated by PMMA film and put onto the surface of LD chip. The blue, green and red emissions were attributed to blue-chip, perovskite QDs and KSF, respectively. The LED devices worked under a voltage of 3 V and a driving current of 20 mA (RH of 60%), and the spectra were measured at different times as indicated in the figure. The bottom is CIE coordinate of SMAPB-QDs/SiO₂ composite powder-based LED device, as well as that of constituent blue LED, SMAPB-QDs/SiO₂ and KSF.

6. Fitting results of PL decays of SMAPB-QDs/SiO₂ composite powder

PL decay of primary SMAPB-QDs and SMAPB-QDs/SiO₂ composite treated with different amount of MABr are, respectively, fitted by a biexponential and tri-exponential function, as described in the maintext. The resultant parameters are listed in Table S1.

Table S1. Fitting parameters of PL decays of SMAPB-QDs/SiO₂ composite

Samples treated with different MABr/mM	A ₁	τ_r /ns	A ₂	τ_{nr} /ns	A ₃	τ_{ET} /ns	τ_{ave} /ns	R ²
Primary (0)	0.96	8	0.09	29.5	0	0	10.335	0.999
2.3	0.48	8	0.44	25.9	0.08	95	22.836	0.9997
4.6	0.46	9.8	0.42	35.7	0.12	145.8	36.998	0.9996
6.9	0.44	7.8	0.42	34.7	0.14	183.8	43.738	0.9994
11.5	0.48	10.4	0.4	39.4	0.13	174.3	43.411	0.9995
23	0.44	9.5	0.43	36.6	0.14	163.3	42.78	0.9996
46	0.44	9.6	0.42	36.5	0.14	160	41.954	0.9996
69	0.52	11.7	0.4	38.4	0.09	132.1	33.333	0.9996