

# Supporting Information

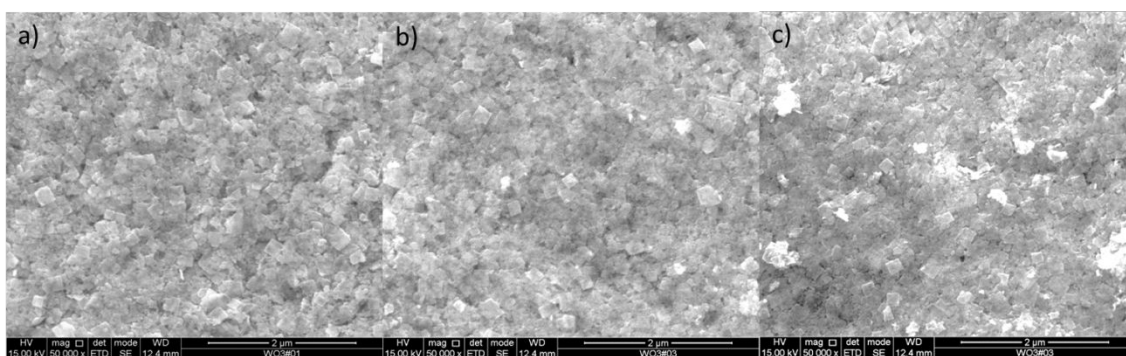
## **Multi-layered $\text{WO}_3$ nano-platelets for efficient photoelectrochemical water splitting: the role of the annealing ramp**

Arlete Apolinário<sup>†,‡</sup>, Tânia Lopes<sup>†</sup>, Cláudia Costa<sup>†</sup>, João P. Araújo<sup>‡</sup> and Adélio M. Mendes<sup>†\*</sup>.

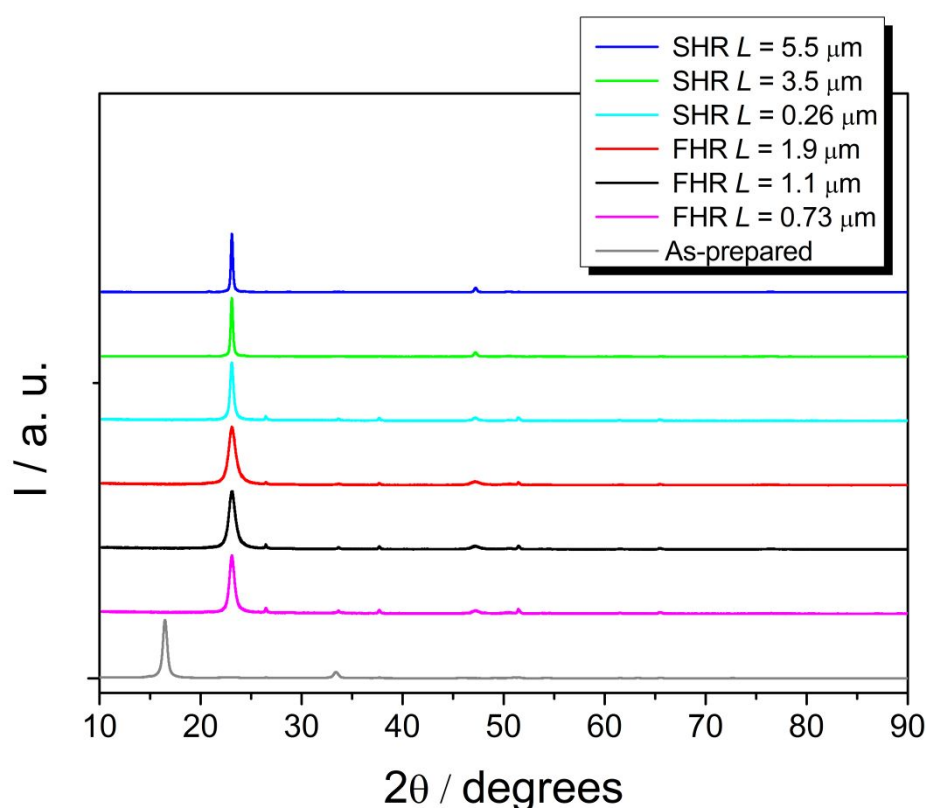
<sup>†</sup>LEPABE, Departamento de Engenharia Química, Faculdade de Engenharia da Universidade do Porto, R. Dr. Roberto Frias, 200-465 Porto, Portugal

<sup>‡</sup>IFIMUP and IN-Instituto de Nanociência e Nanotecnologia, Departamento de Física e Astronomia, Faculdade de Ciências da Universidade do Porto, Rua do Campo Alegre, 678, 4169-007 Porto, Portugal.

\* E-mail: mendes@fe.up.pt



**Figure S1.** The top view SEM images for the set of samples annealed with a fast heating-ramp –  $500\text{ }^{\circ}\text{C}\cdot\text{h}^{-1}$  with different thickness ( $L$ ):  $0.73\text{ }\mu\text{m}$  (a);  $1.1\text{ }\mu\text{m}$  (b) and  $1.9\text{ }\mu\text{m}$  (c).



**Figure S2.** X-ray diffraction patterns spectra of  $\text{WO}_3$  photoelectrodes in Bragg-Brentano focusing method: as-prepared and annealed for the fast heating-ramp and slow heating-ramp samples with different thicknesses normalized to the maximum peak.

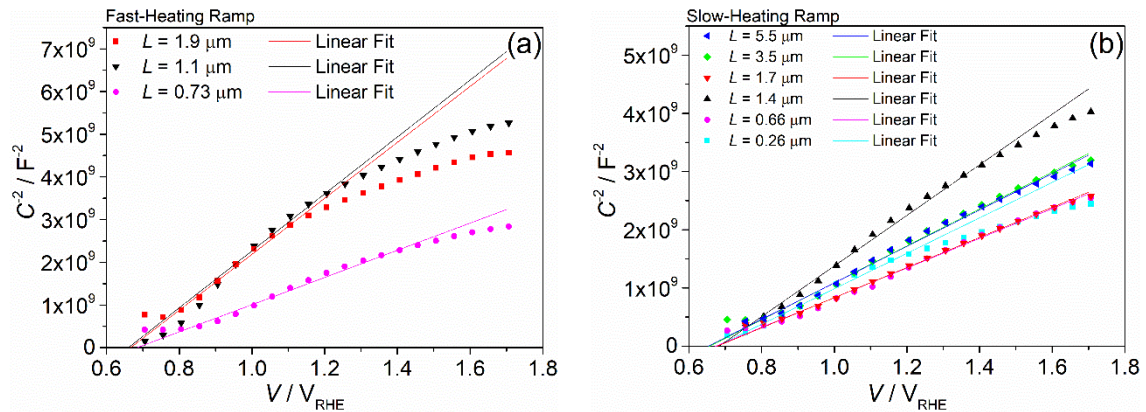
### Electrochemical Impedance Spectroscopy Analysis

Electrochemical impedance spectroscopy (EIS) measurements were performed using an Interface 5000E workstation (Gamry Instruments). The frequency range selected was  $0.01\text{ Hz} - 100\text{ kHz}$  and the magnitude of the modulation signal was  $10\text{ mV}$ . All the EIS experiments were performed at room temperature at an applied potential range of  $0.75\text{ V}_{\text{RHE}} - 1.7\text{ V}_{\text{RHE}}$  under dark conditions. The measurements were conducted in a standard three-electrode configuration comprising an  $\text{Ag}/\text{AgCl}/\text{Sat KCl}$  electrode (Metrohm, Switzerland) as reference electrode, a platinum wire as counter-electrode, and the

photoanode as working electrode, all immersed in a 3 M MSA aqueous solution. The experimental spectrum obtained for each studied sample was fitted to the simplified Randles electrical analogue by means of the ZView® software in the high frequencies range (100 Hz to 100 kHz). The Mott-Schottky analysis was conducted following Equation (S1):

$$\frac{1}{C_{SC}^2} = \frac{2}{\varepsilon_0 \varepsilon_r e N_D A^2} \left( (V_E - V_{FB}) - \frac{kT}{e} \right) \quad (S1)$$

where,  $\varepsilon_r$  is dielectric constant of the semiconductor (assumed 50 for  $WO_3$ ),  $\varepsilon_0$  is the permittivity of space,  $k$  is the Boltzmann's constant,  $T$  the absolute temperature,  $e$  is the elementary charge,  $N_D$  is the donor density and  $V_E$  and  $V_{FB}$  are the applied voltage and the flat band potentials, respectively. By plotting  $1/C_{SC}^2$  as a function of the applied bias potential, a straight line should be obtained; the donor density,  $N_D$ , can then be determined from the slope of this line, while the flat band potential,  $V_{FB}$ , value can be obtained by extrapolating the interception of the straight line with the axis of the applied potential [Figure S3 (a) and (b)] and Table S1.



**Figure S3.** Mott-Schottky plots calculated from  $C_{SC}$  values determined from fitting the impedance spectra of  $WO_3$  photoelectrodes: (a) annealed with a slow-heating ramp; and (b) annealed with a fast-heating ramp.

**Table S1.** Flat-band potentials ( $V_{FB}$ , in  $V_{RHE}$ ) and Dopant densities ( $N_D$ , in  $10^{21} \text{ cm}^{-3}$ ) both derived from linear fits in [[Figure S1 (a) and (b)] and according to Eq.S1.

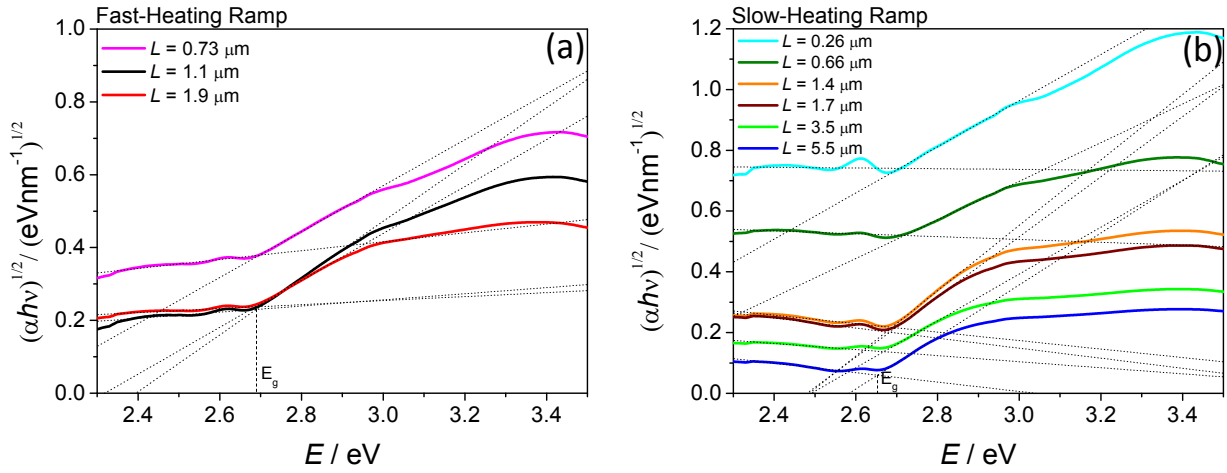
	Sample	$V_{fb}$ ( $V_{RHE}$ )	$N_D$ ( $10^{21} \text{ cm}^{-3}$ )
Fast-Heating Ramp	$L = 0.73 \mu\text{m}$	0.68	9.44
	$L = 1.10 \mu\text{m}$	0.66	6.65
	$L = 1.90 \mu\text{m}$	0.67	6.77
Slow-Heating Ramp	$L = 0.26 \mu\text{m}$	0.68	8.94
	$L = 0.66 \mu\text{m}$	0.67	9.79
	$L = 1.40 \mu\text{m}$	0.68	6.76
	$L = 1.70 \mu\text{m}$	0.68	10.31
	$L = 3.50 \mu\text{m}$	0.66	9.37
	$L = 5.50 \mu\text{m}$	0.65	8.55

## Tauc plots

The optical band gaps for all the samples were determined using the Tauc formula:

$$\alpha hv = A(hv - E_g)^n \quad (\text{S2})$$

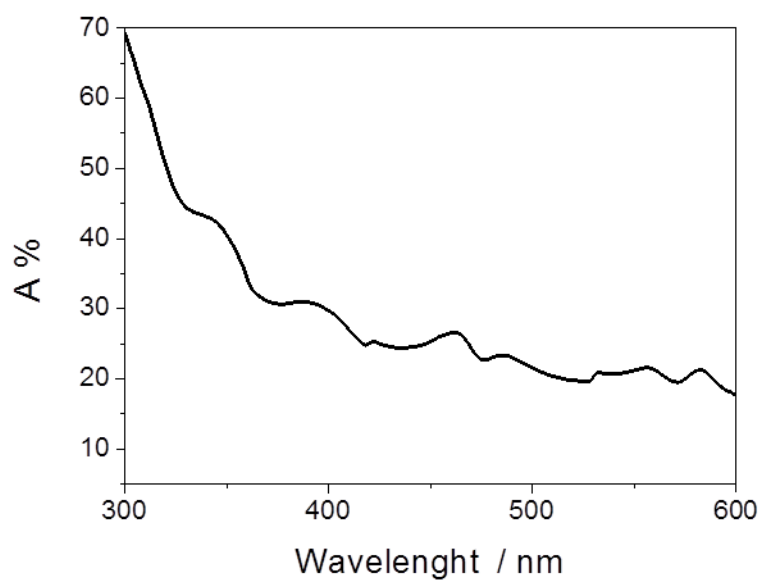
where  $A$  is a constant,  $hv$  is the incident photon energy,  $\alpha$  the absorption factor,  $E_g$  is the band gap energy, and  $n$  is equal to  $1/2$  for an allowed direct transition, or  $2$  for an allowed indirect transition (for  $\text{WO}_3$ ). The band-gap values can be determined by the plot of  $(\alpha hv)^{1/2}$  vs.  $hv$  [Fig. S4 (a) and (b)]. The obtained values of  $E_g$  for the two groups of samples are displayed in Table S2.



**Figure S4.** Tauc plots,  $(\alpha hv)^{1/2}$  versus  $hv$ , of  $\text{WO}_3$  photoelectrodes: (a) annealed with a fast-heating ramp and (b) annealed with a slow-heating ramp;  $E_g$  is the band-gap.

**Table S2.**  $E_g$  band-gap both derived from linear fits from Figure S4 (a) and (b) and according to Eq.S2.

	Sample	$E_g$ (eV)
Fast-Heating Ramp	$L = 0.73 \mu\text{m}$	2.70
	$L = 1.10 \mu\text{m}$	2.70
	$L = 1.90 \mu\text{m}$	2.69
Slow-Heating Ramp	$L = 0.26 \mu\text{m}$	2.71
	$L = 0.66 \mu\text{m}$	2.72
	$L = 1.40 \mu\text{m}$	2.69
	$L = 1.70 \mu\text{m}$	2.68
	$L = 3.50 \mu\text{m}$	2.67
	$L = 5.50 \mu\text{m}$	2.65



**Figure S5.** UV-Vis absorption spectra of the transparent TCO substrate.

#### REFERENCES

- (1) Salje, E. and K. Viswanathan, Physical properties and phase transitions in  $\text{WO}_3$ . *Acta Crystallographica Section A*, 1975. 31(3): p. 356-359.