

Supporting Information

Enantiomers of Single Chirality Nanotube as Chiral Recognition Interface for Enhanced Electrochemical Chiral Analysis

Chunling Pu, Yunxia Xu, Qi Liu, Anwei Zhu and Guoyue Shi**

School of Chemistry and Molecular Engineering, Shanghai Key Laboratory for
Urban Ecological Processes and Eco-Restoration, East China Normal
University, 500 Dongchuan Road, Shanghai 200241, P.R. China

1. Cyclic voltammogram of $\text{Ru}(\text{NH}_3)_6^{3+/2+}$ (Figure S1)
2. Effect of the number of electrodeposition cycle (Figure S2)
3. DPVs of L-AA or D-AA. (Figure S3)
4. Effect of the concentration of DOPA enantiomers (Figure S4)

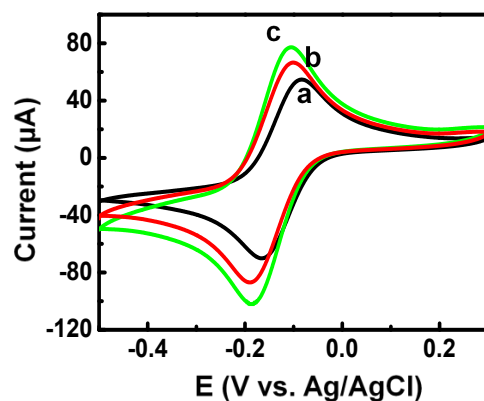


Figure S1. Cyclic voltammogram obtained on the (a) bare GCE, (b) SWCNT/GCE, or (c) ox-SWCNT/GCE in 0.1 M KCl containing 5 mM $\text{Ru}(\text{NH}_3)_6^{3+/2+}$.

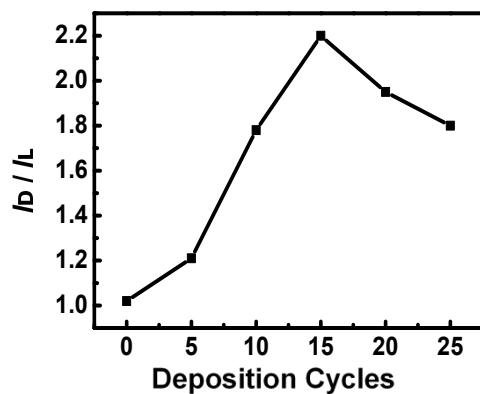


Figure S2. Effect of the number of electrodeposition cycle on the peak current ratio of 25 μM D- and L-DOPA (I_D / I_L) at M-(6,5) SWCNT/GCE.

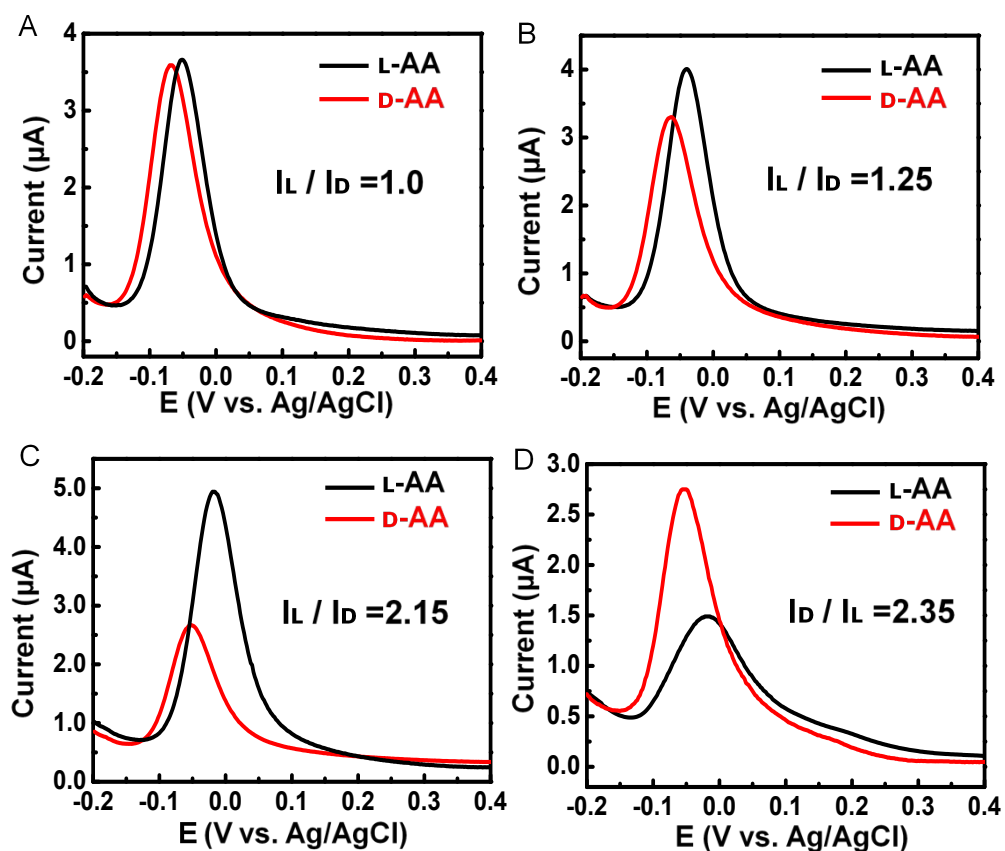


Figure S3. DPVs of (A) racemic mixtures SWCNT/GCE, (B) raw chiral (6,5) SWCNT/GCE, (C) P-(6,5) SWCNT/GCE, and (D) M-(6,5) SWCNT/GCE in 0.1 M PBS (pH=7.0) containing 0.5 mM L-AA or D-AA.

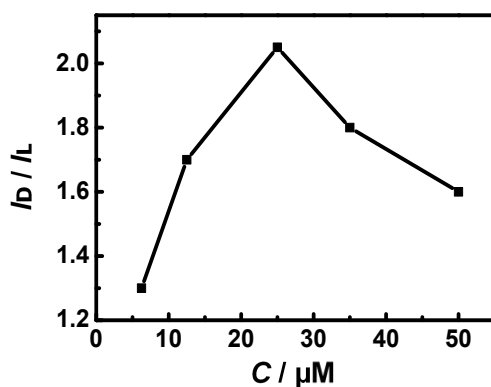


Figure S4. Effect of the concentration of DOPA enantiomers on the peak current ratio of D- and L-DOPA (I_D/I_L) at ox-M-(6,5) SWCNT/GCE.

