

Supporting information

Title of main article: Strain-Level Differentiation of Bacteria by Paper Spray Ionization Mass Spectrometry

Authors: Casey A. Chamberlain[†], Vanessa Y. Rubio[‡], Timothy J. Garrett^{*†}

[†]Department of Pathology, Immunology and Laboratory Medicine, University of Florida, Gainesville, Florida 32610, United States

[‡]Department of Chemistry, University of Florida, Gainesville, Florida 32611, United States

Table of Contents

- Figure S1. Example PSI-MS spectra obtained from OxWR lysates representing 4 of the strain-specific features: m/z 99.0198, 125.0545, 134.0647, 188.0673. 1 m/z windows centered on the targeted ion show competing ions at similar or much larger intensities, making MS/MS isolation even on HRMS difficult for identification purposes. BPI indicates Base Peak Intensity. Asterisk (*) indicates ion of interest and associated intensity level.
- Table S1. Parameters for PSI-MS instrumentation and methodology used for this study
- Table S2. Predicted chemical formula, adduct, and identification information for strain-exclusive features from CEU Mass Mediator screening the Human Metabolome Database, KEGG, Metlin, and Lipid Maps for exact mass matches (5ppm) to common ESI(+) adducts of known metabolites and lipids.

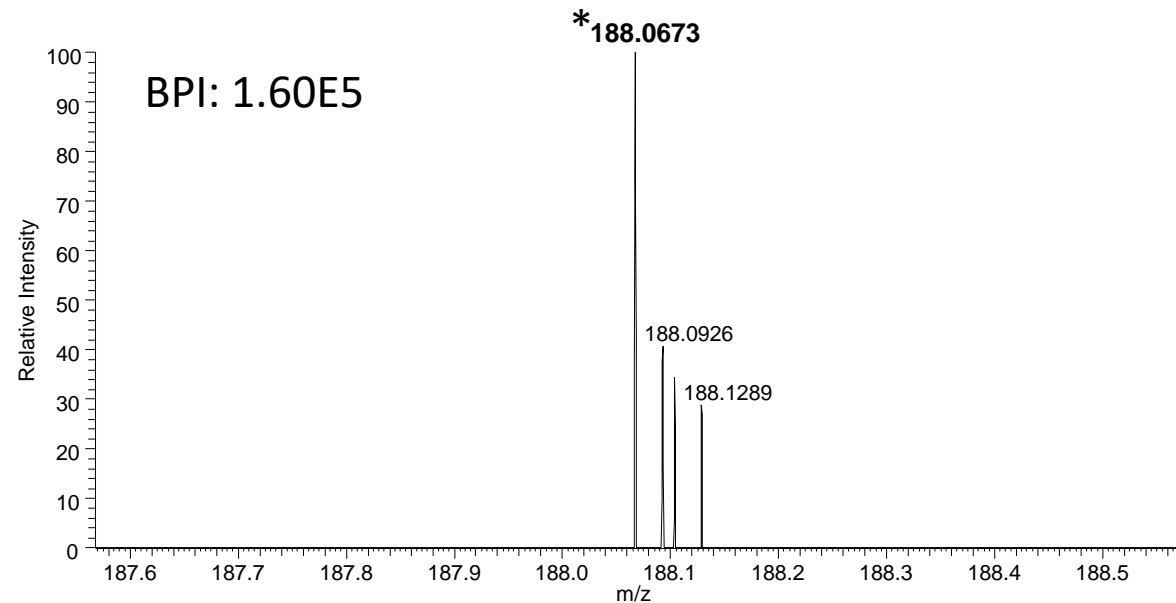
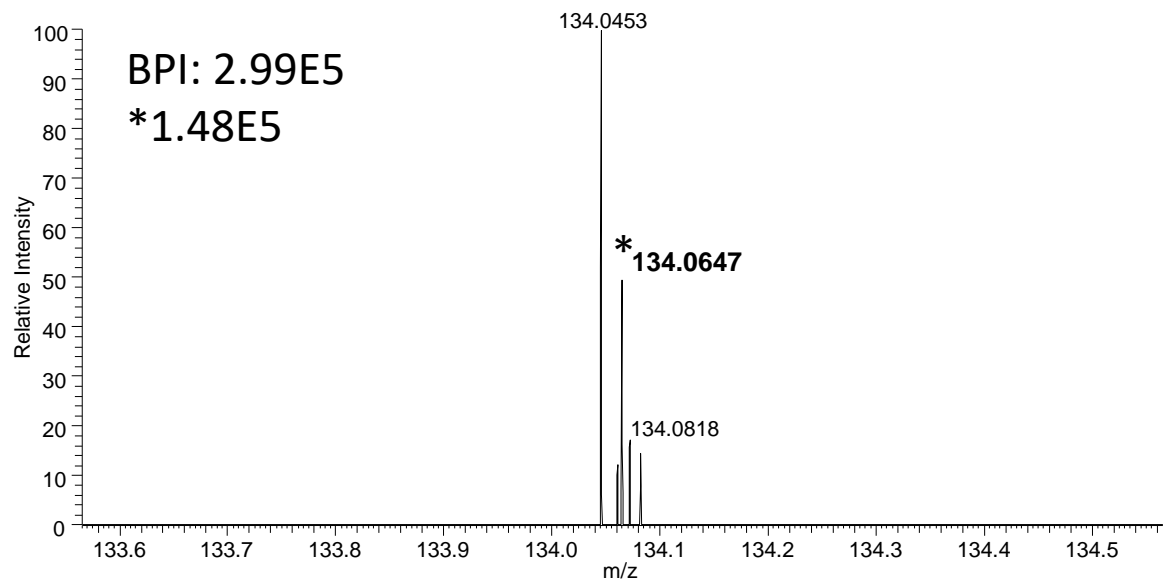
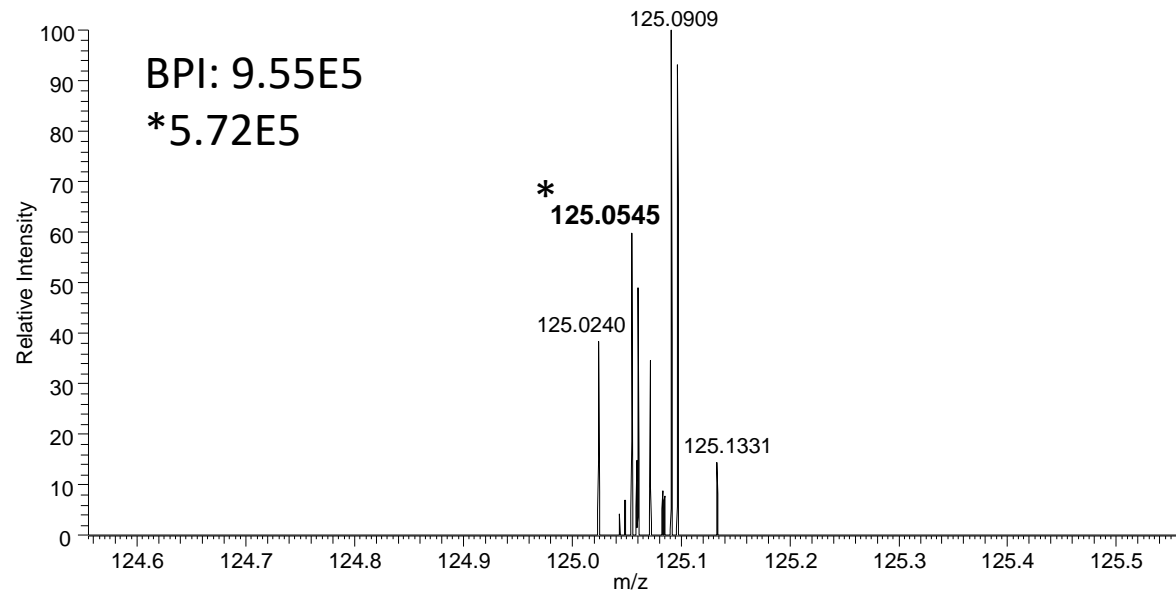
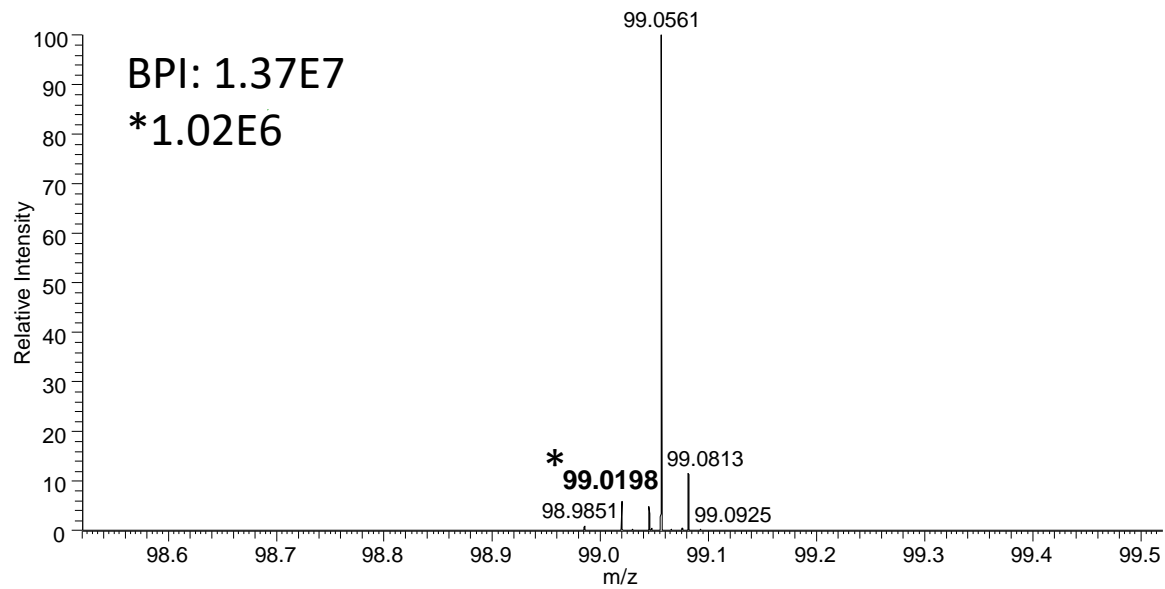


Figure S1. PSI-MS spectra obtained from OxWR lysates representing 4 of the strain-specific features: m/z 99.0198, 125.0545, 134.0647, 188.0673. 1 m/z windows centered on the targeted ion show competing ions at similar or much larger intensities, making MS/MS isolation even on HRMS difficult for identification purposes. BPI indicates Base Peak Intensity. Asterisk (*) indicates ion of interest and associated intensity level.

Table S1. Parameters for PSI-MS instrumentation and methodology

Mass Spectrometer	Thermo Q Exactive
Spray Voltage	4.5 kV
Capillary Temp	270° C
S-Lens RF	30%
Paper Spray System	Prosolia Velox 360
Solvent	4:1 H ₂ O:ACN + 0.1% FA
Dispensing Steps	8
Dispense Volume	80 µL
Sample Dispense	5
Scan	Full MS
Mass Range	70 - 1,000 <i>m/z</i>
Resolution	140,000
Polarity	Positive

Table S2. Predicted chemical formula, adduct, and identification information for strain-exclusive features from CEU Mass Mediator screening the Human Metabolome Database, KEGG, Metlin, and Lipid Maps for exact mass matches (5ppm) to common ESI(+) adducts of known metabolites and lipids.

Experimental Mass (<i>m/z</i>)	Strain	Analysis	Formula	Adduct	Error (PPM)	Name
75.0325	Ox WR	Lysates, Whole Cells				<i>No identifications found</i>
93.0384	Ox WR	Whole Cells				<i>No identifications found</i>
99.0198	Ox WR	Whole Cells				<i>No identifications found</i>
100.0276	Ox WR	Lysates, Whole Cells				<i>No identifications found</i>
101.0988	Ox WR	Lysates				<i>No identifications found</i>
105.0303	Ox WR	Whole Cells				<i>No identifications found</i>
115.0145	Ox WR	Lysates	C3H4N2O4	[M+H-H2O] ⁺	4	Oxalurate; Oxaluric acid; Monooxalylurea; Oxalurate; N-Carbamoyl-2-oxoglycine
121.0251	Ox WR	Whole Cells				<i>No identifications found</i>
125.0545	Ox WR	Lysates, Whole Cells				<i>No identifications found</i>
133.0250	Ox WR	Lysates, Whole Cells	C3H4N2O4	[M+H] ⁺	5	Oxalurate; Oxaluric acid; Monooxalylurea; Oxalurate; N-Carbamoyl-2-oxoglycine
134.0647	Ox WR	Whole Cells				<i>No identifications found</i>
135.0406	Ox WR	Lysates, Whole Cells	C3H6N2O4	[M+H] ⁺	4	(R)-Ureidoglycolate; (+)-Ureidoglycolate; (+)-Ureidoglycolic acid
			C4H12N2S2	[M+H-H2O] ⁺	3	Cystamine
135.0770	Ox WR	Whole Cells	C4H10N2O3	[M+H] ⁺	4	L-Canaline
						N-Nitrosodiethanolamine
143.0649	Ox WR	Lysates				<i>No identifications found</i>
157.0807	Ox WR	Lysates				<i>No identifications found</i>
159.0406	Ox WR	Lysates	C5H6N2O4	[M+H] ⁺	4	L-5-Carboxymethylhydantoin
						Ibotenic acid
						L-Dihydroorotic acid
						4,5-Dihydroorotic acid
			C5H8N2O5	[M+H-H2O] ⁺	3	3-(Carboxycarbonylamino)-L-alanine; N3-Oxalyl-L-2,3-diaminopropanoate; L-alpha-Amino-beta-oxalylaminopropionic acid; beta-ODAP
						N-Carbamoyl-DL-aspartic acid
						Ureidosuccinic acid
						L-3-Amino-2-(oxalylamino)propanoic acid
						L-2-Amino-3-(oxalylamino)propanoic acid
164.1018	Ox WR	Lysates				<i>No identifications found</i>
174.0516	Ox WR	Lysates, Whole Cells	C5H7N3O4	[M+H] ⁺	4	Azaserine
188.0673	Ox WR	Lysates, Whole Cells	C6H9N3O4	[M+H] ⁺	4	1-(2-Hydroxyethyl)-2-hydroxymethyl-5-nitroimidazole
325.3667	HC1	Whole Cells				<i>No identifications found</i>
334.3476	HC1	Whole Cells				<i>No identifications found</i>
339.3823	HC1	Whole Cells				<i>No identifications found</i>
353.3978	HC1	Whole Cells				<i>No identifications found</i>