

Selective Antiproliferative Withanolides from Species in the Genera *Eriolarynx* and *Deprea*.

Sebastián J. Castro,[†] Carina N. Casero,[†] José M. Padrón,^{*,‡} and Viviana E. Nicotra^{*,†}

[†] Facultad de Ciencias Químicas, Instituto Multidisciplinario de Biología Vegetal (IMBIV-CONICET), Universidad Nacional de Córdoba, Casilla de Correo 495, 5000 Córdoba, Argentina

[‡] BioLab, Instituto Universitario de Bio-Organica “Antonio González” (IUBO-AG), Centro de Investigaciones Biomédicas de Canarias (CIBICAN), Universidad de La Laguna, C/Astrofísico Francisco Sánchez 2, 38206 La Laguna, Spain

TABLE OF CONTENTS

- Figure S1.** Relevant NOE correlations of compound **1**.
Figure S2. ¹H NMR spectrum of compound **2**.
Figure S3. COSY spectrum of compound **2**.
Figure S4. HSQC spectrum of compound **2**.
Figure S5. HMBC spectrum of compound **2**.
Figure S6. ¹H NMR spectrum of compound **3** (epimeric mixture at C-18).
Figure S7. COSY spectrum of compound **3** (epimeric mixture at C-18).
Figure S8. HSQC spectrum of compound **3** (epimeric mixture at C-18).
Figure S9. HMBC spectrum of compound **3** (epimeric mixture at C-18).
Figure S10. ¹H NMR spectrum of compound **4**.
Figure S11. COSY spectrum of compound **4**.
Figure S12. HSQC spectrum of compound **4**.
Figure S13. HMBC spectrum of compound **4**.
Figure S14. ¹H NMR spectrum of compound **5**.
Figure S15. COSY spectrum of compound **5**.
Figure S16. HSQC spectrum of compound **5**.
Figure S17. HMBC spectrum of compound **5**.
Figure S18. Relevant NOE correlations of compounds **4** and **5**.
Figure S19. GI₅₀ range plot against tested human solid cell lines and GI₅₀ against human fibroblasts.

Figure S1. Relevant NOE correlations of compound **1** (CDCl₃, 400.13 MHz).

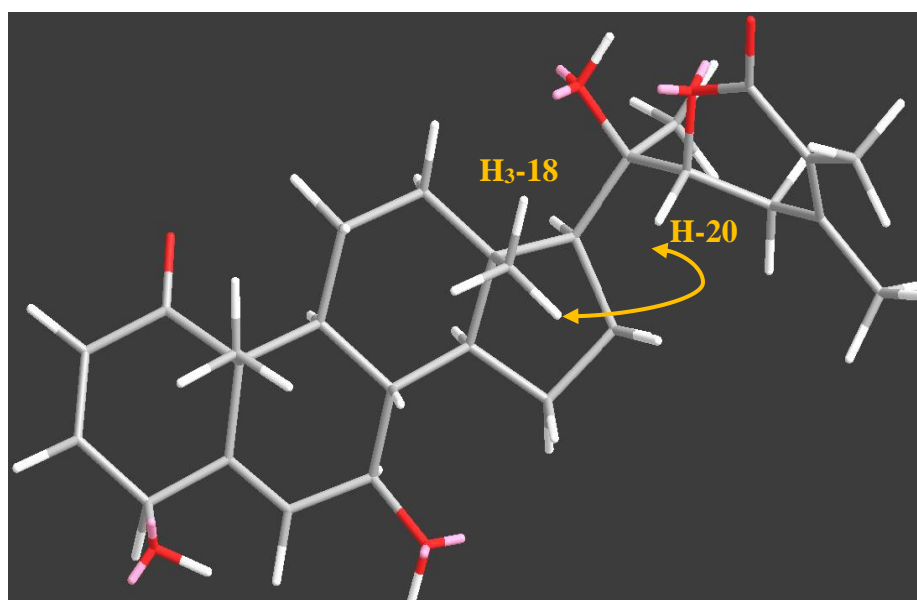
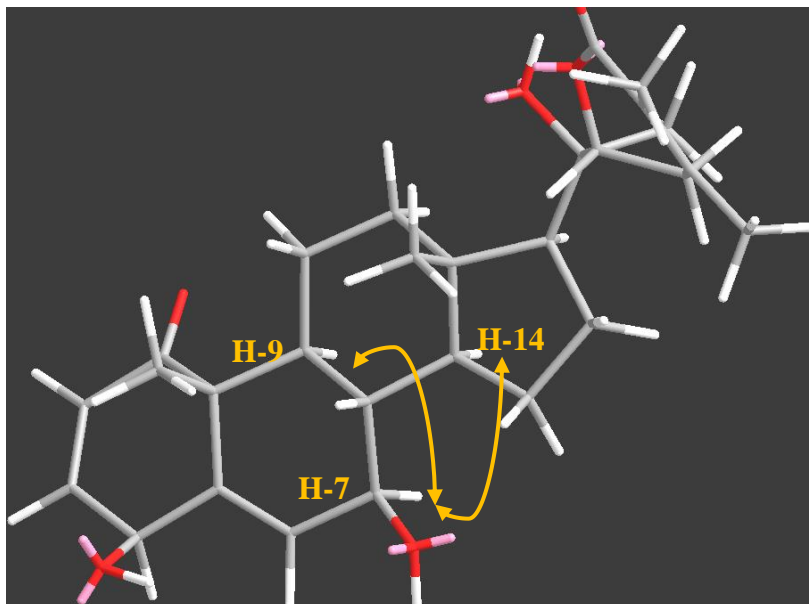


Figure S2. ^1H NMR spectrum of compound **2** (CDCl_3 , 400.13 MHz).

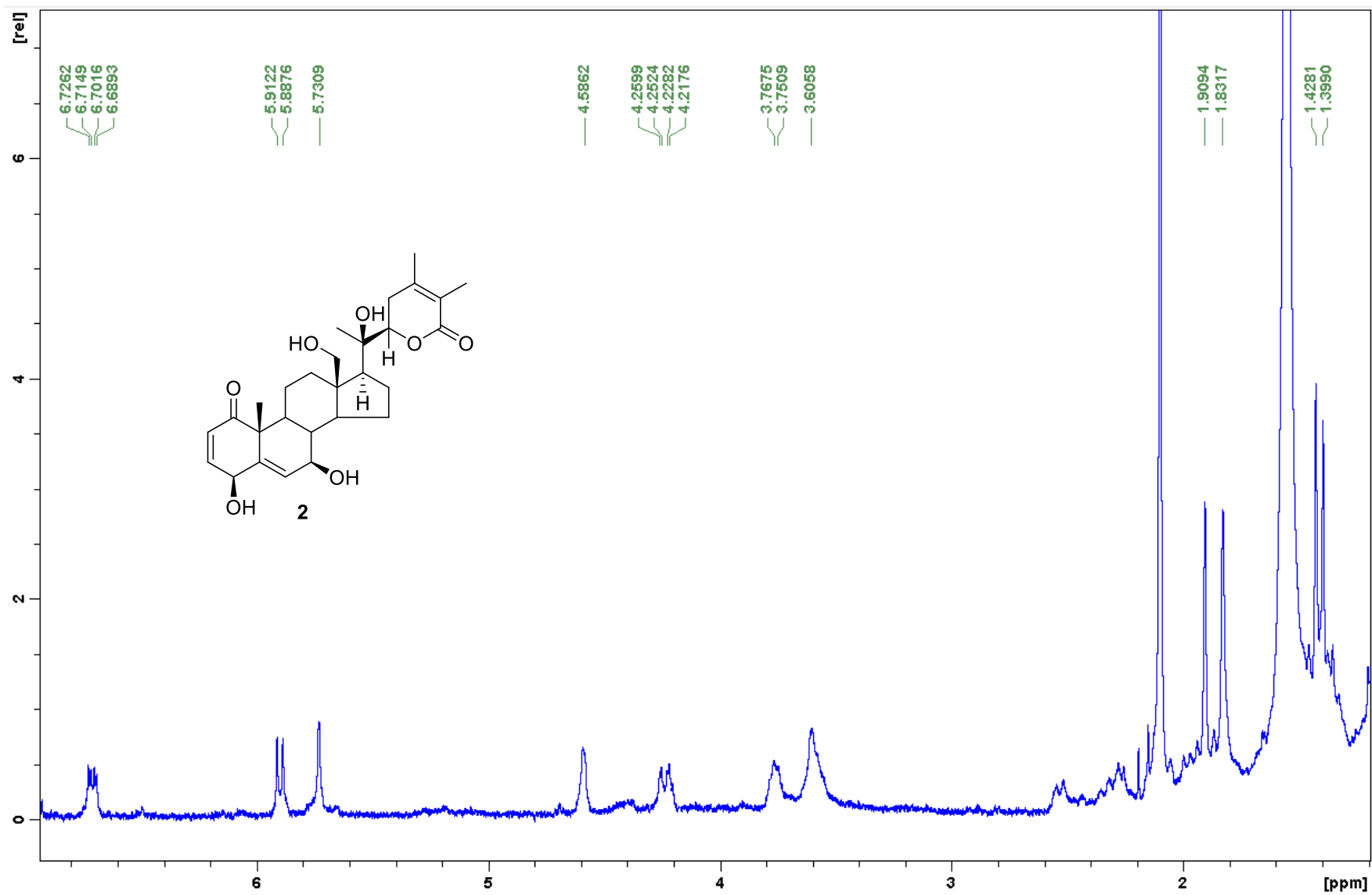


Figure S3. COSY spectrum of compound **2** (CDCl₃, 400.13 MHz).

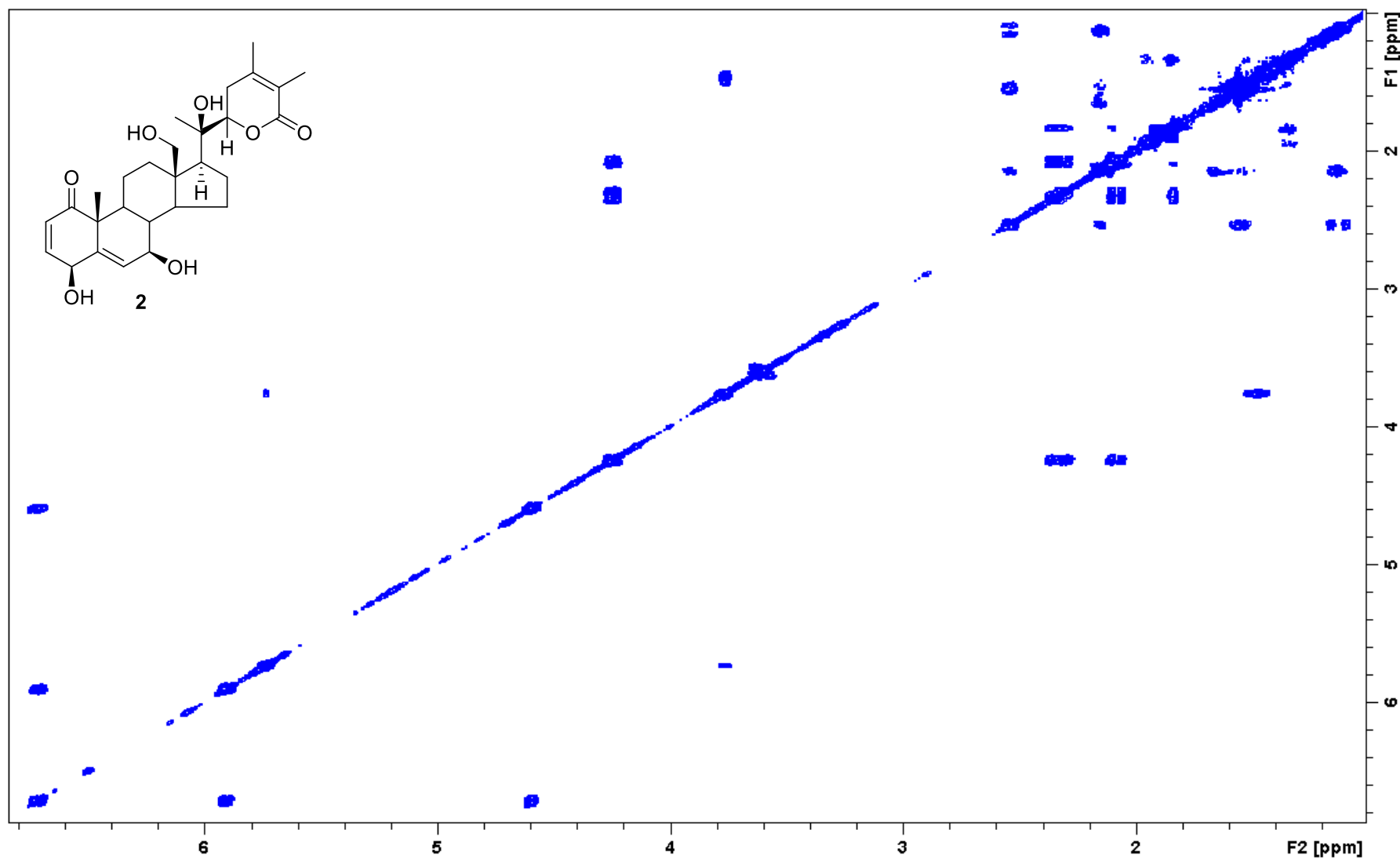


Figure S4. HSQC spectrum of compound **2** (CDCl₃, 400.13 MHz).

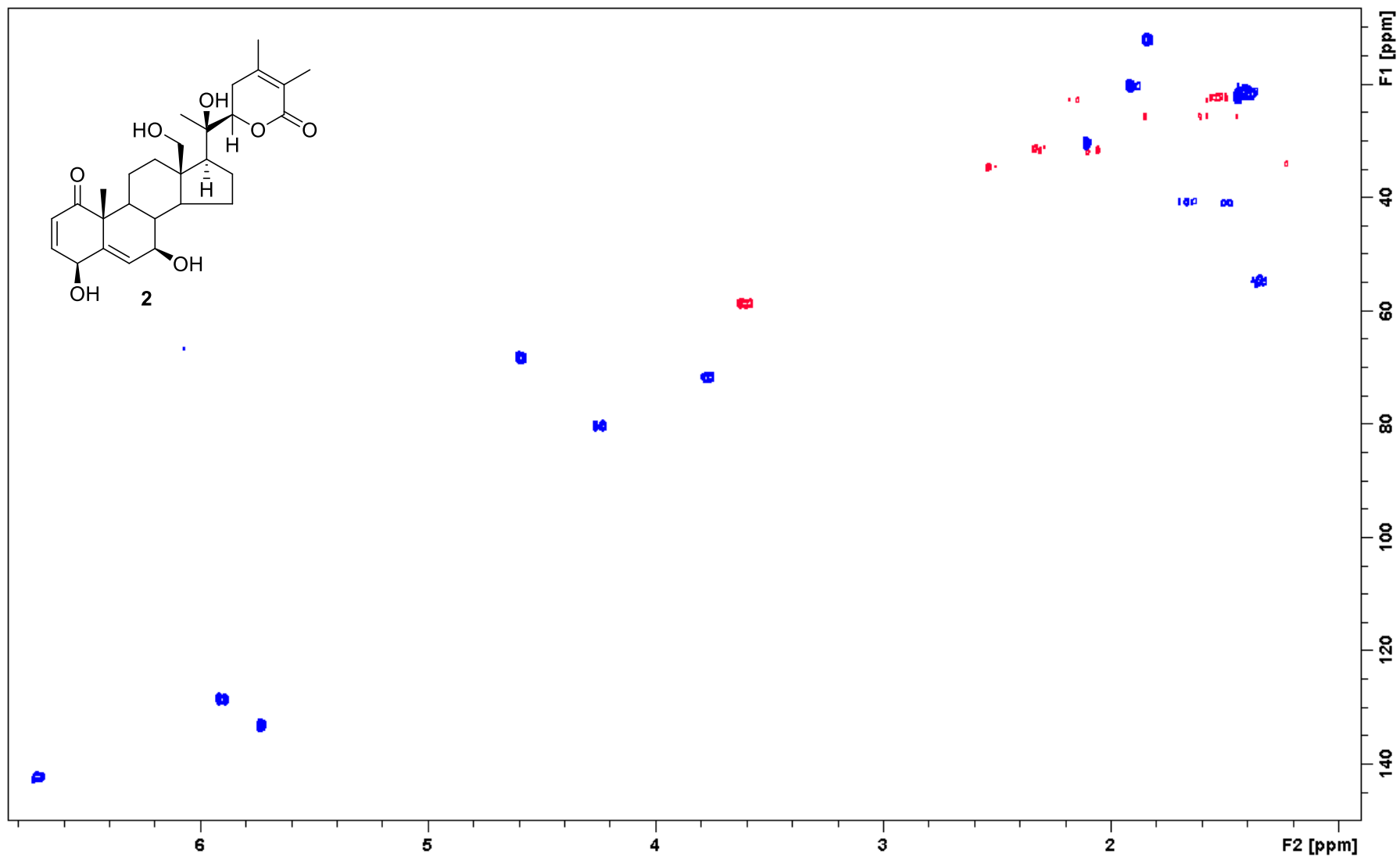


Figure S5. HMBC spectrum of compound **2** (CDCl₃, 400.13 MHz).

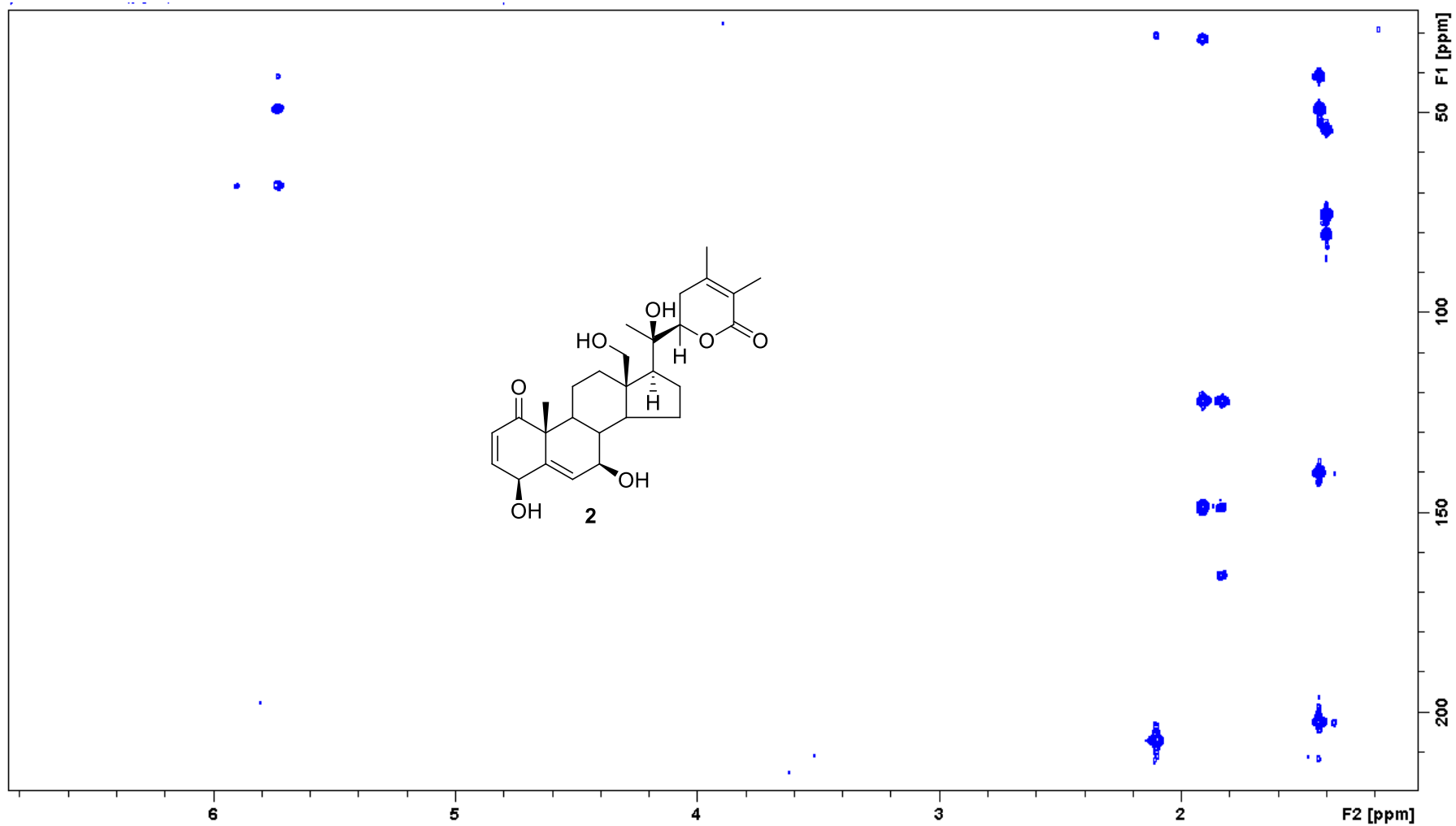


Figure S6. ^1H NMR spectrum of compound **3** (epimeric mixture at C-18) (CDCl_3 , 400.13 MHz).

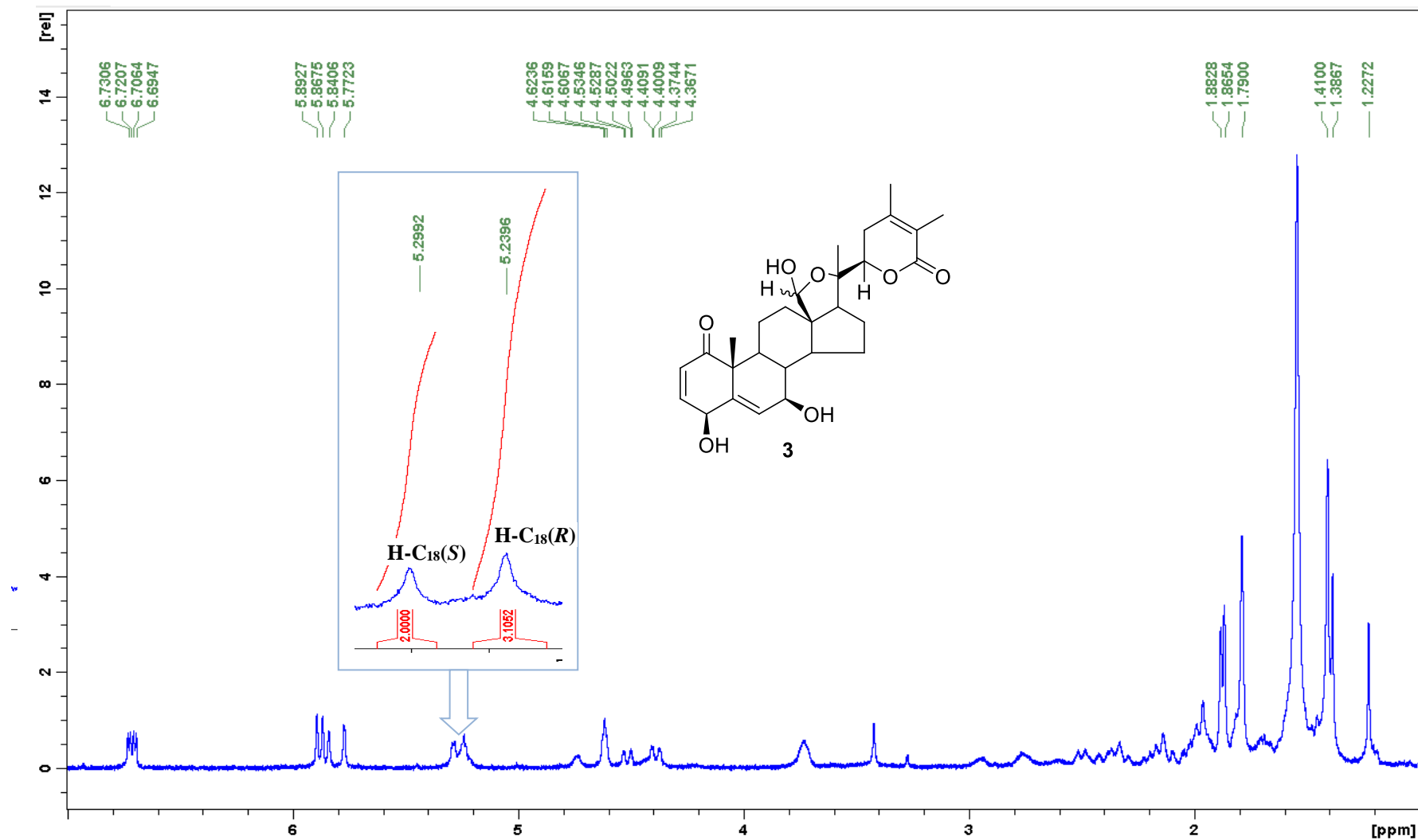


Figure S7. COSY spectrum of compound **3** (epimeric mixture at C-18) (CDCl₃, 400.13 MHz).

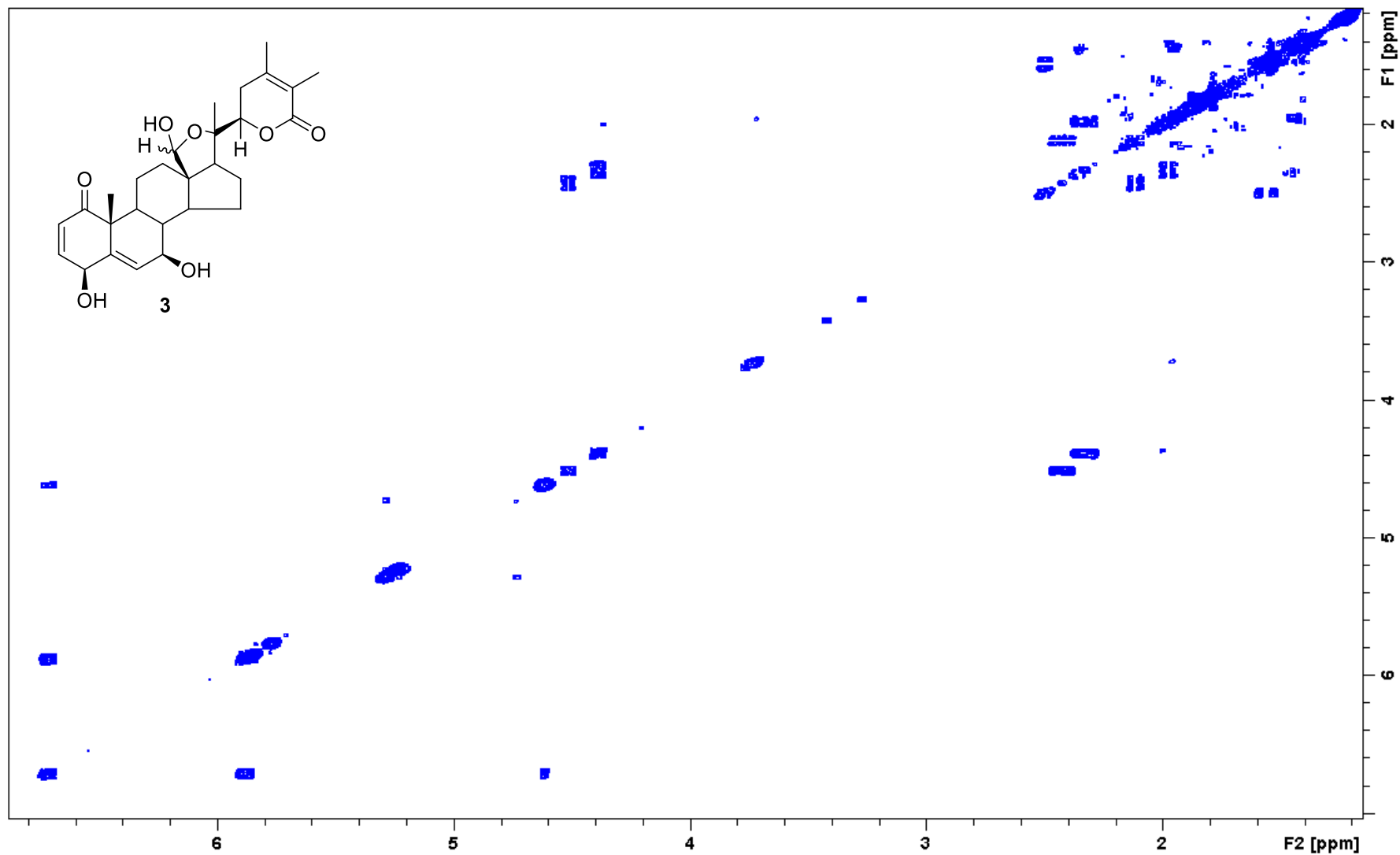


Figure S8. HSQC spectrum of compound **3** (epimeric mixture at C-18) (CDCl₃, 400.13 MHz).

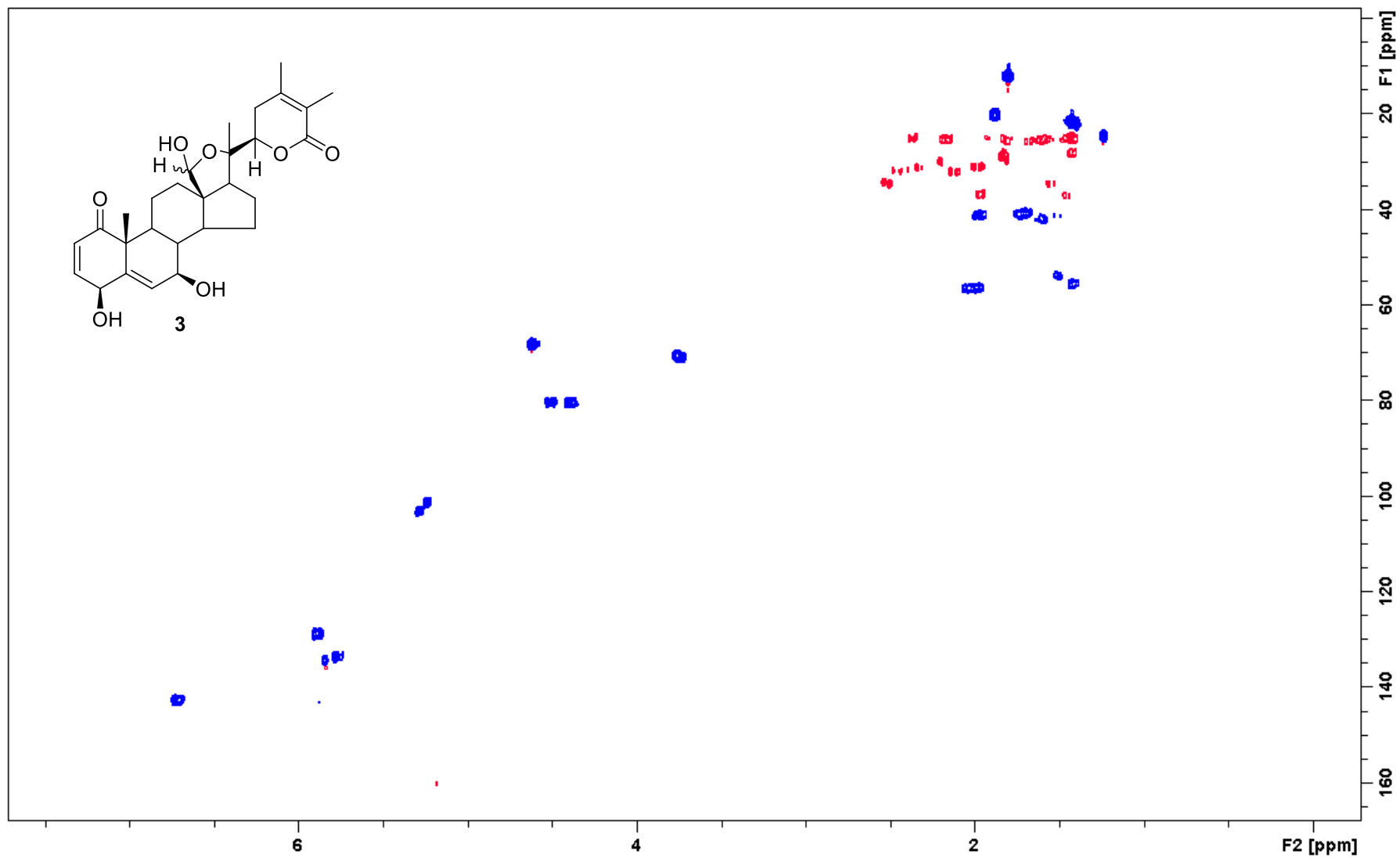


Figure S9. HMBC spectrum of compound **3** (epimeric mixture at C-18) (CDCl₃, 400.13 MHz).

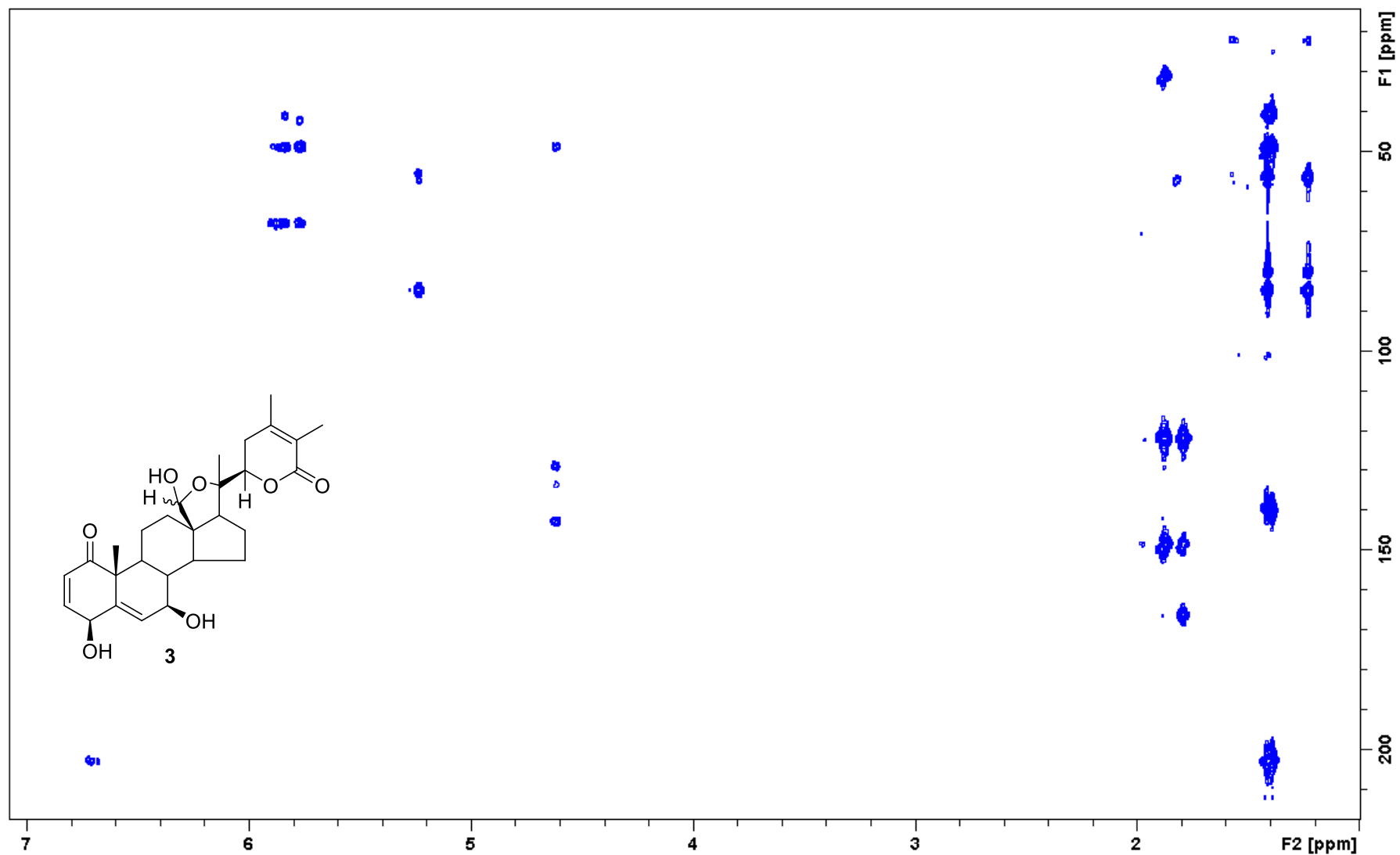


Figure S10. ^1H RMN spectrum of compound **4** (CDCl_3 , 400.13 MHz).

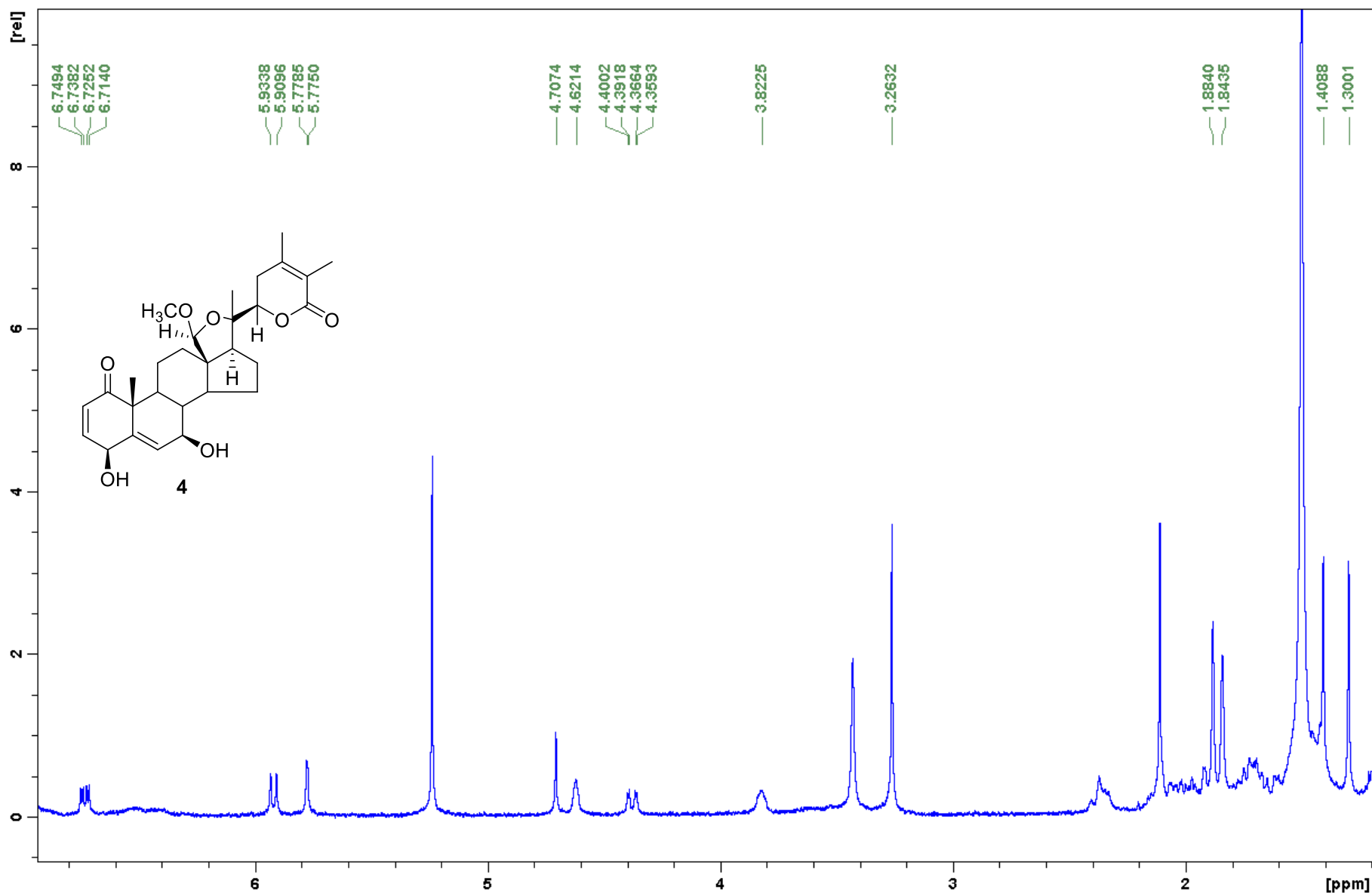


Figure S11. COSY spectrum of compound **4** (CDCl₃, 400.13 MHz).

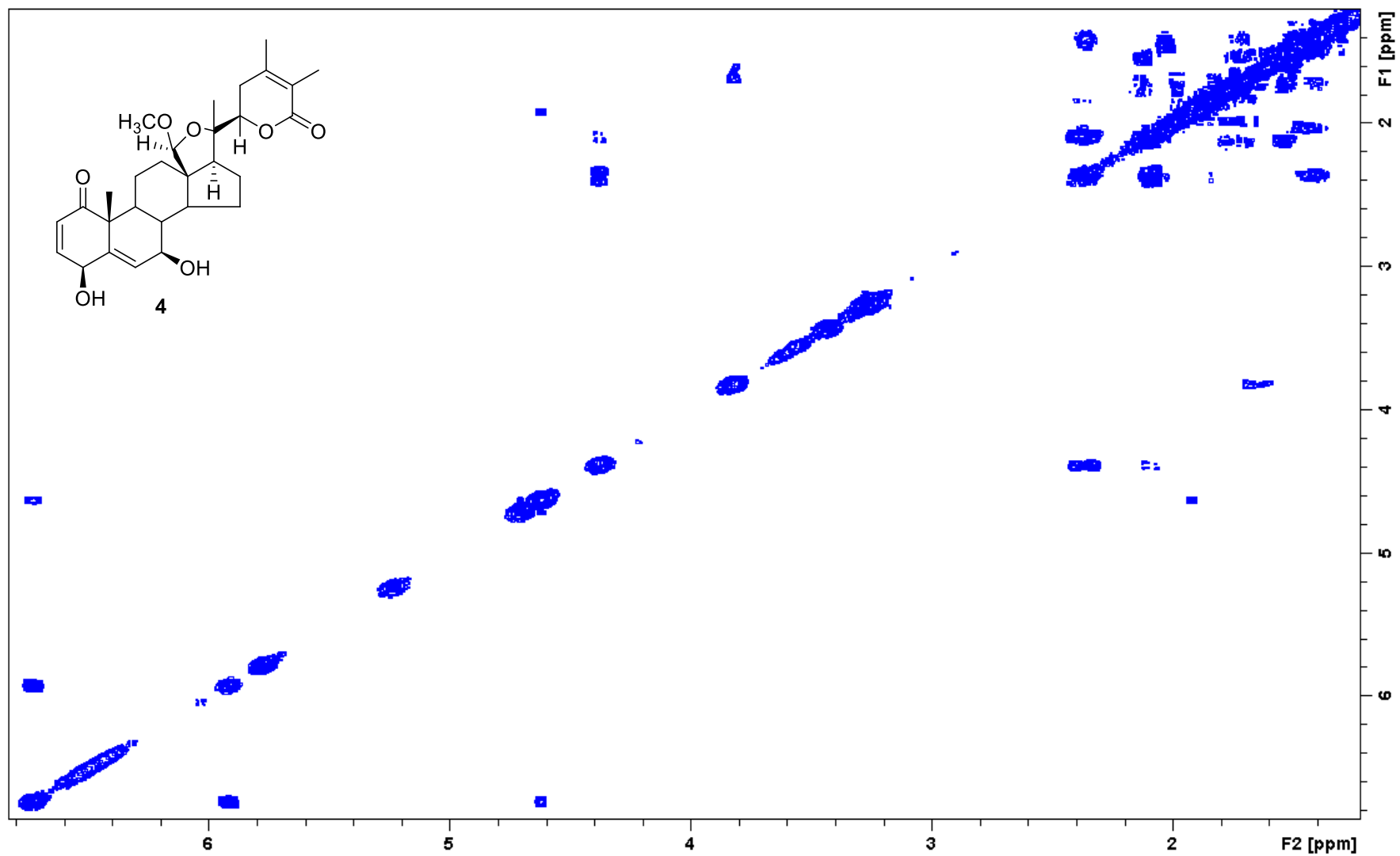


Figure S12. HSQC spectrum of compound **4** (CDCl₃, 400.13 MHz).

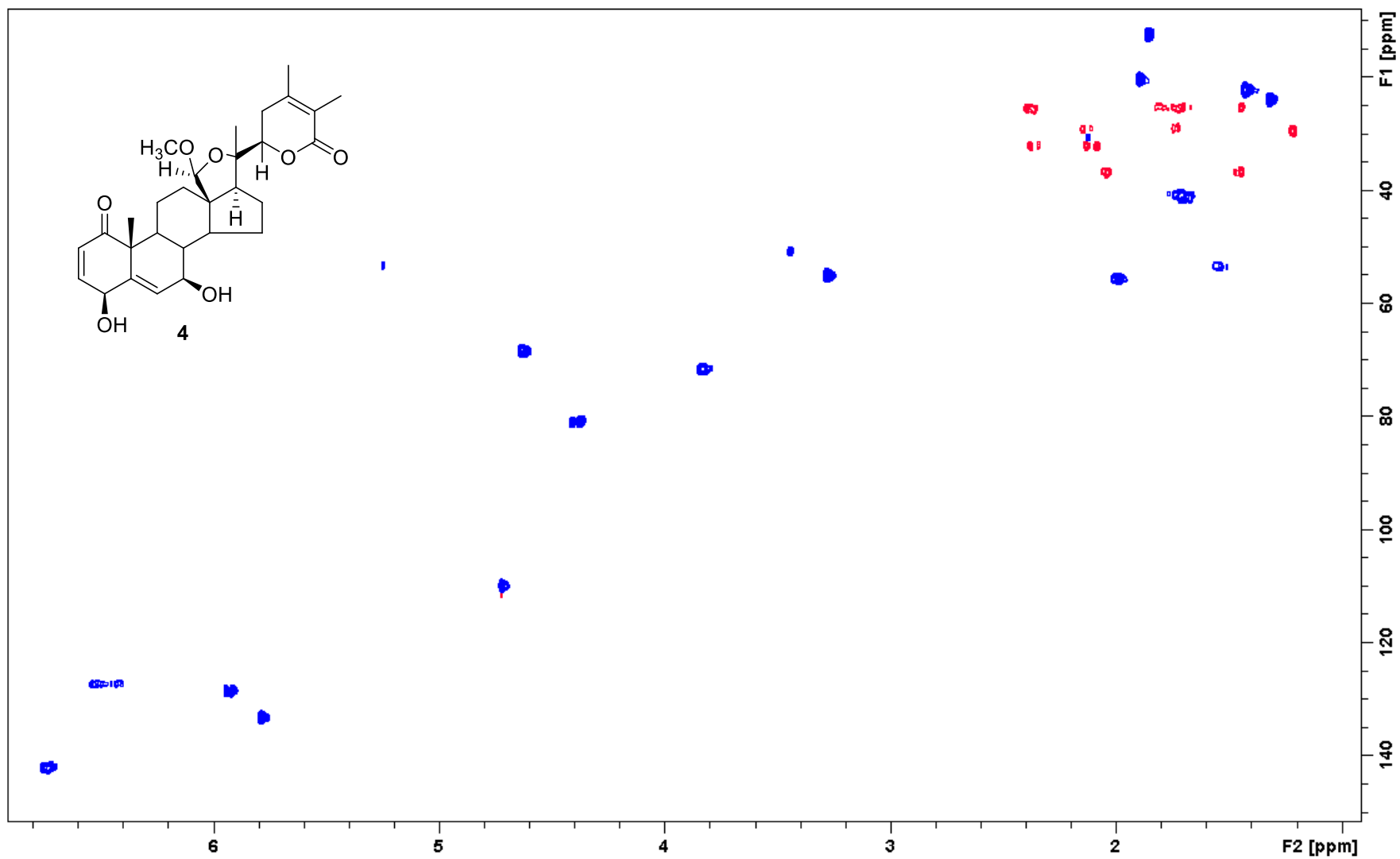


Figure S13. HMBC spectrum of compound **4** (CDCl₃, 400.13 MHz).

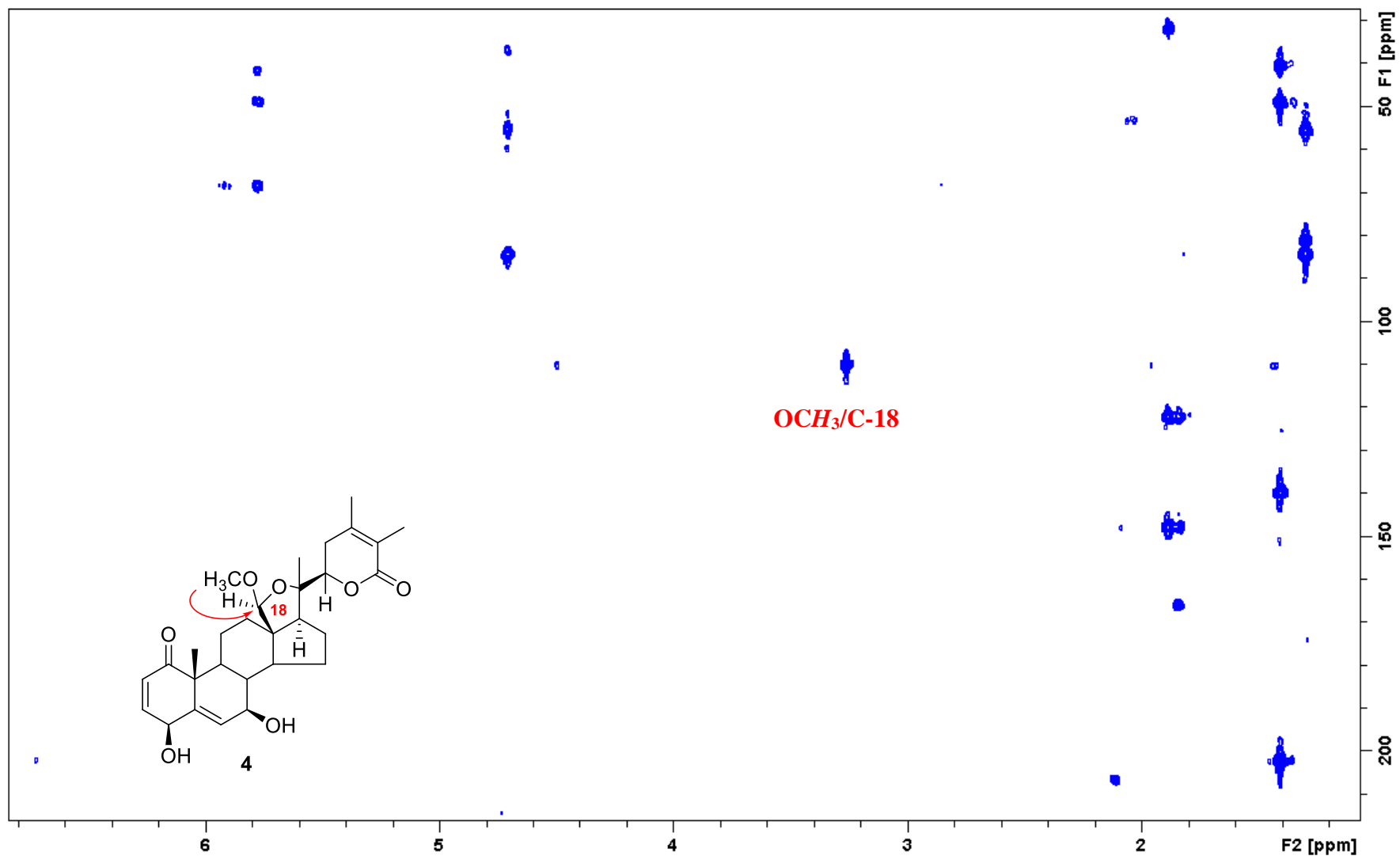


Figure S14. ^1H NMR spectrum of compound **5** (CDCl_3 , 400.13 MHz).

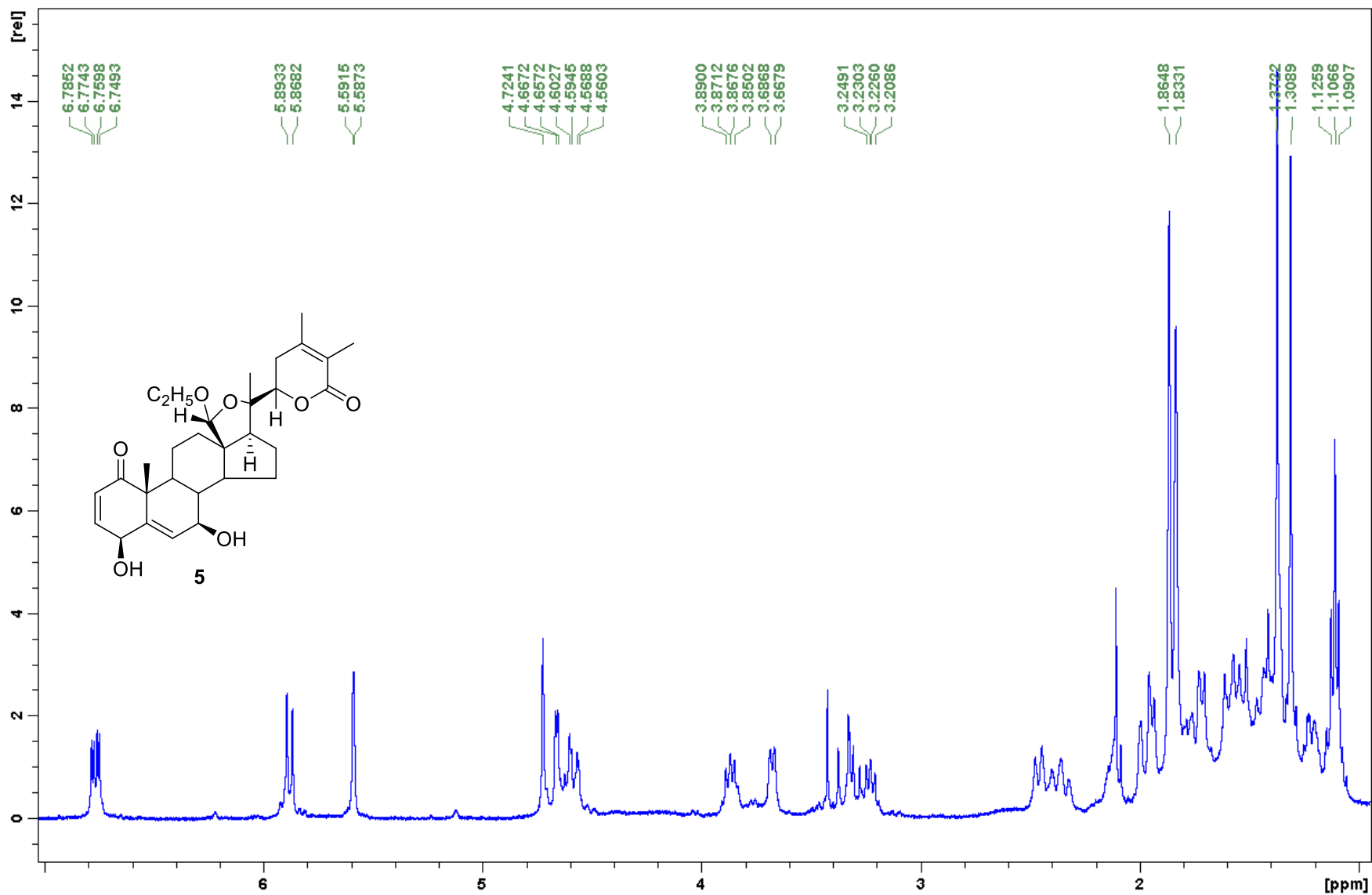


Figure S15. COSY spectrum of compound **5** (CDCl₃, 400.13 MHz).

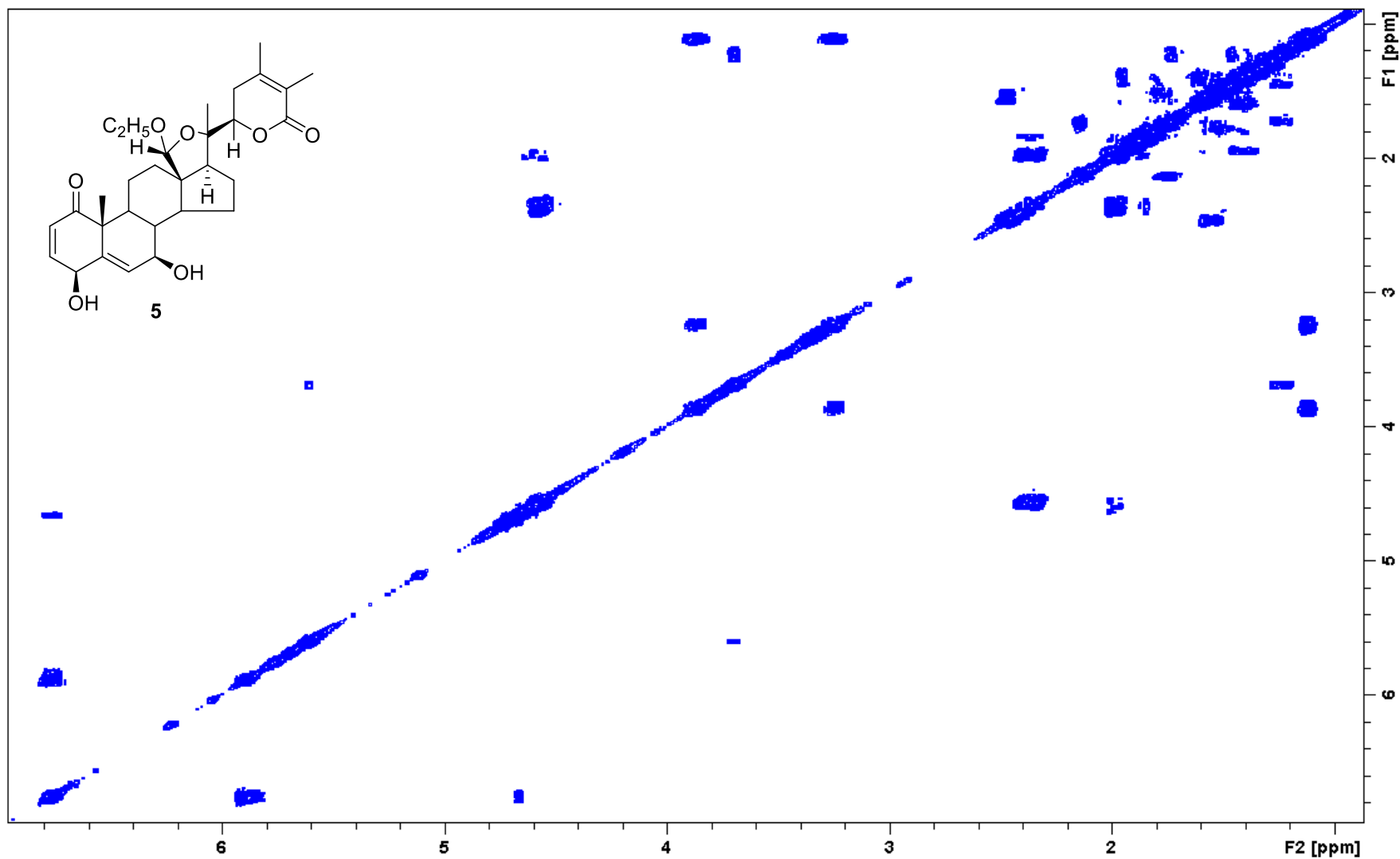


Figure S16. HSQC spectrum of compound **5** (CDCl₃, 400.13 MHz).

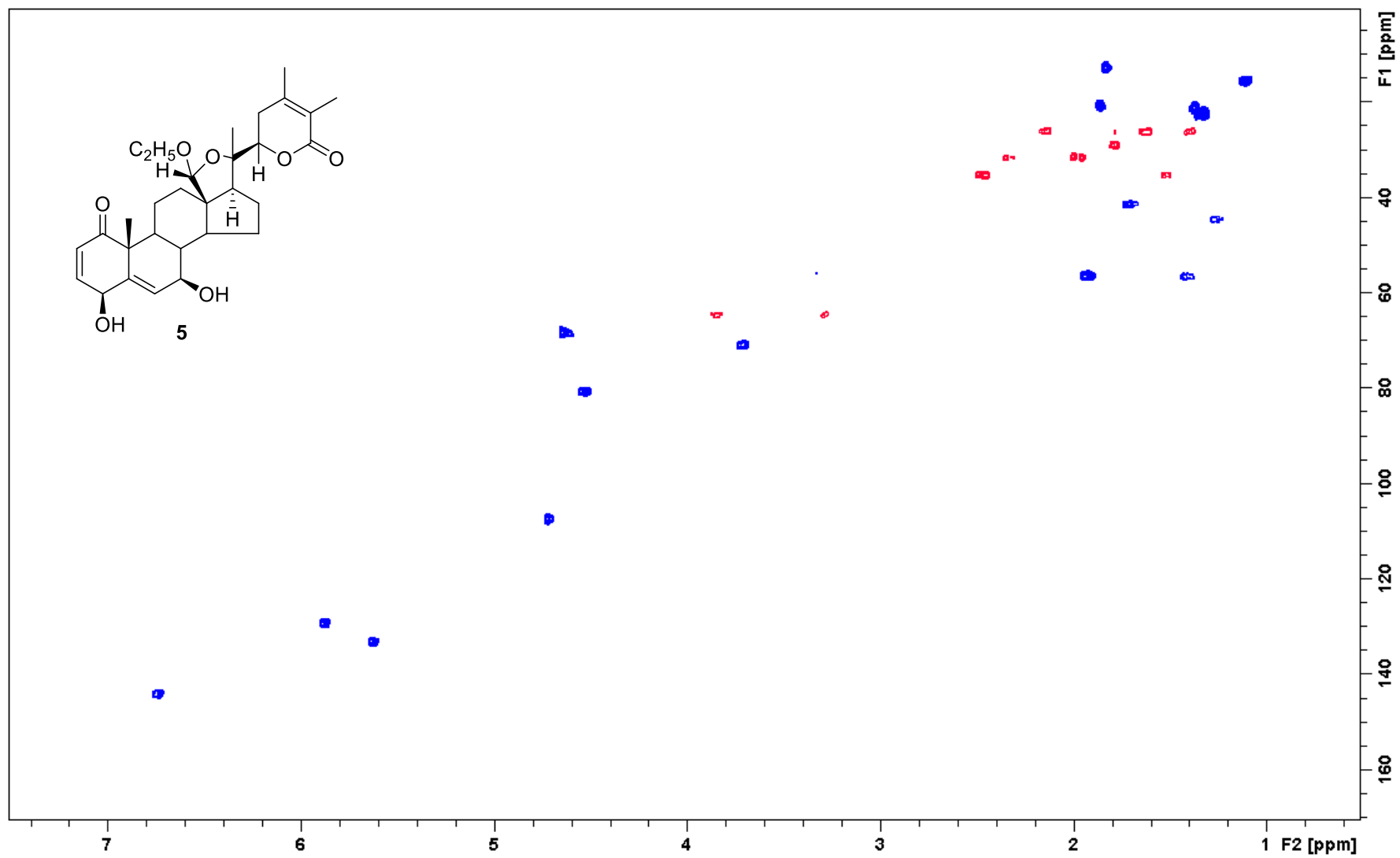


Figure S17. HMBC spectrum of compound **5** (CDCl₃, 400.13 MHz).

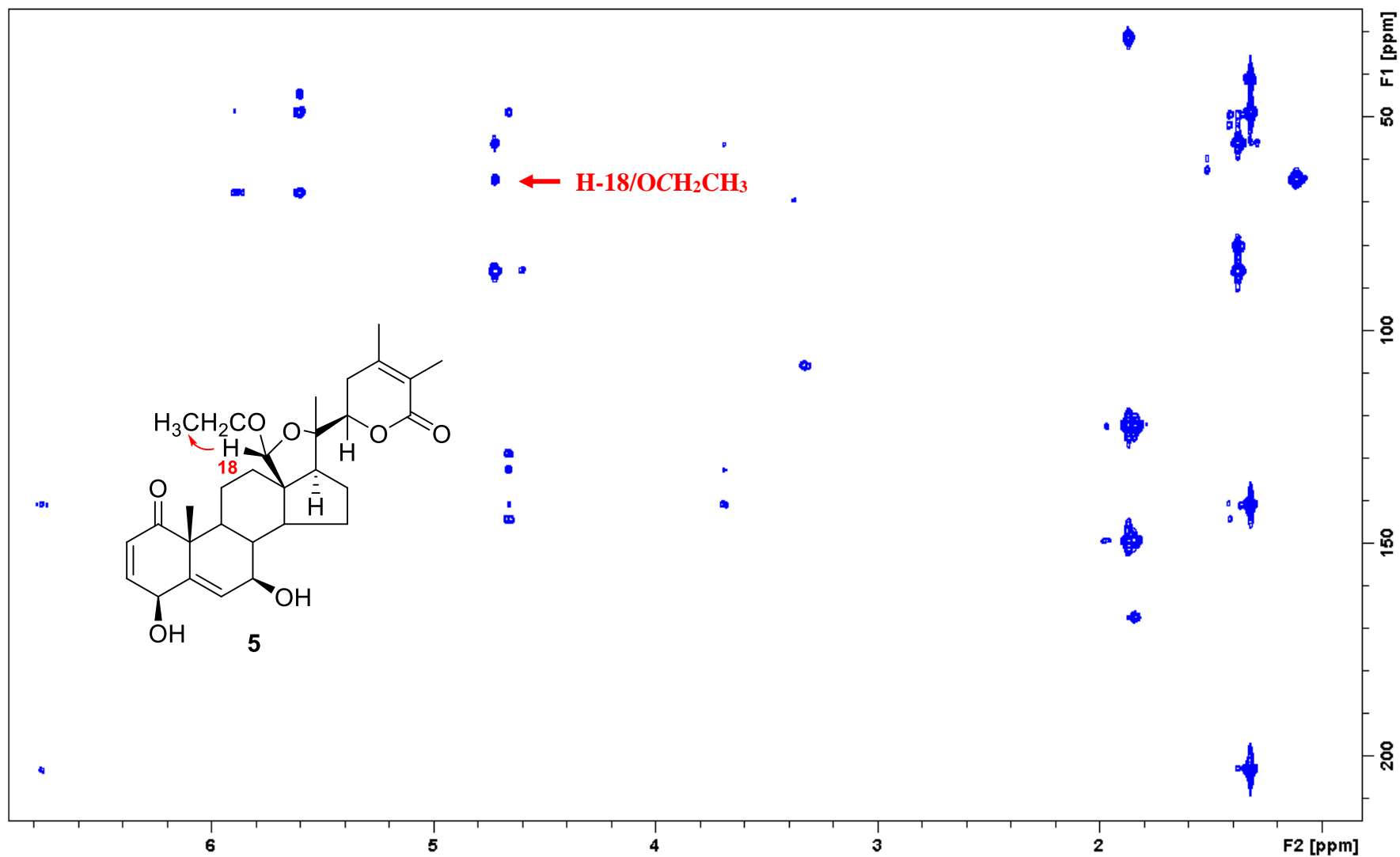


Figure S18. Relevant NOE correlations of compounds **4** and **5** (CDCl₃, 400.13 MHz).

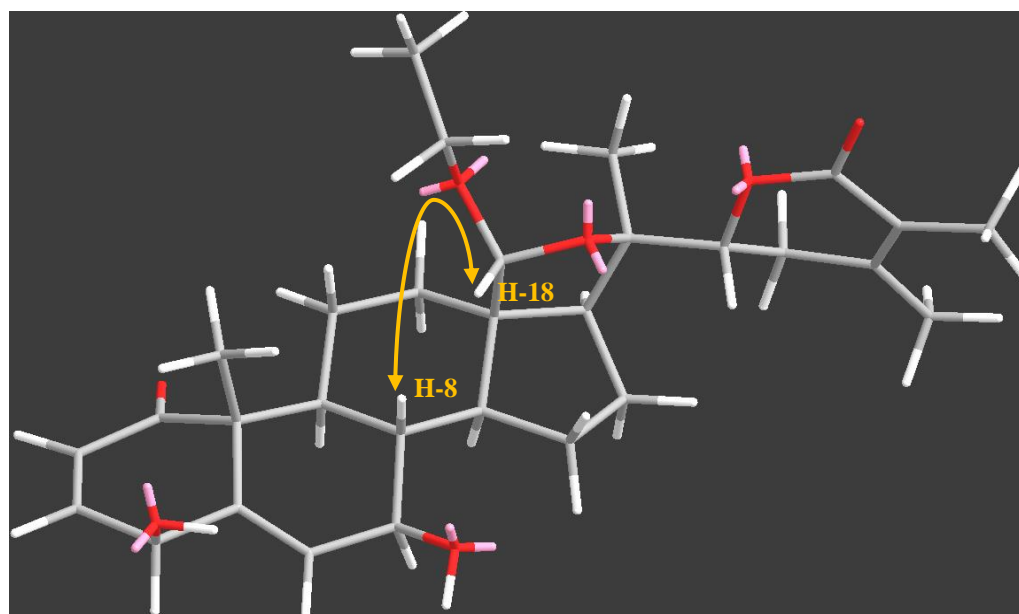
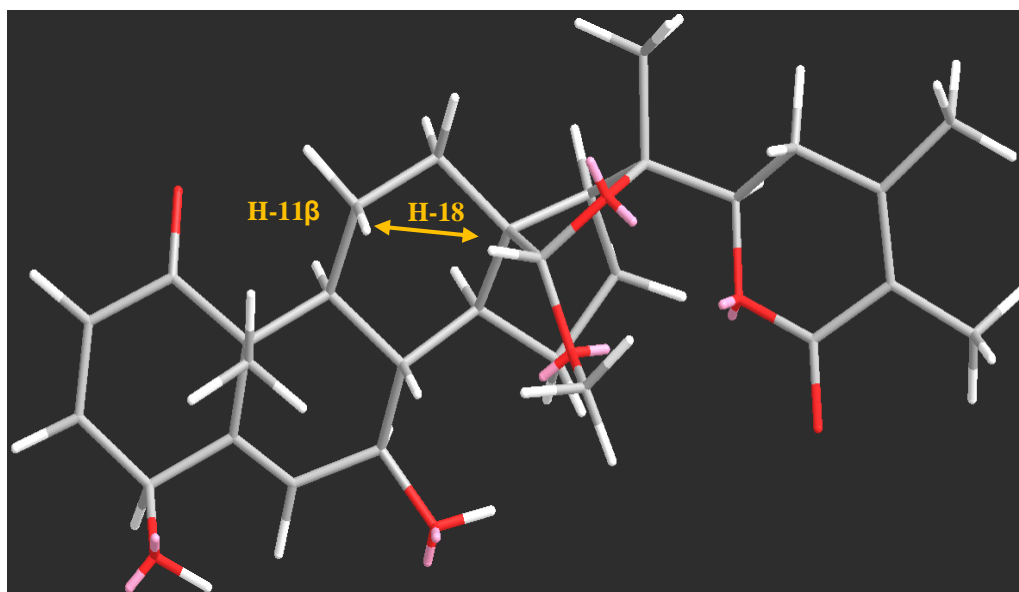


Figure S19. GI₅₀ range plot against tested human solid cell lines (cisplatin: blue bars, 1–13 yellow bars) and GI₅₀ against human fibroblasts (red bars).

