

Supporting information

Tailoring polymersome shape using Hofmeister effect

Yongjun Men§, Wei Li§, Coralie Lebleu, Jiawei Sun and Daniela A. Wilson*

Radboud University, Institute for Molecules and Materials, Heyendaalseweg 135, 6525 AJ, Nijmegen, The Netherlands

* Corresponding author. Tel.: +31 (0)24 36 52185

E-mail address: D.Wilson@science.ru.nl

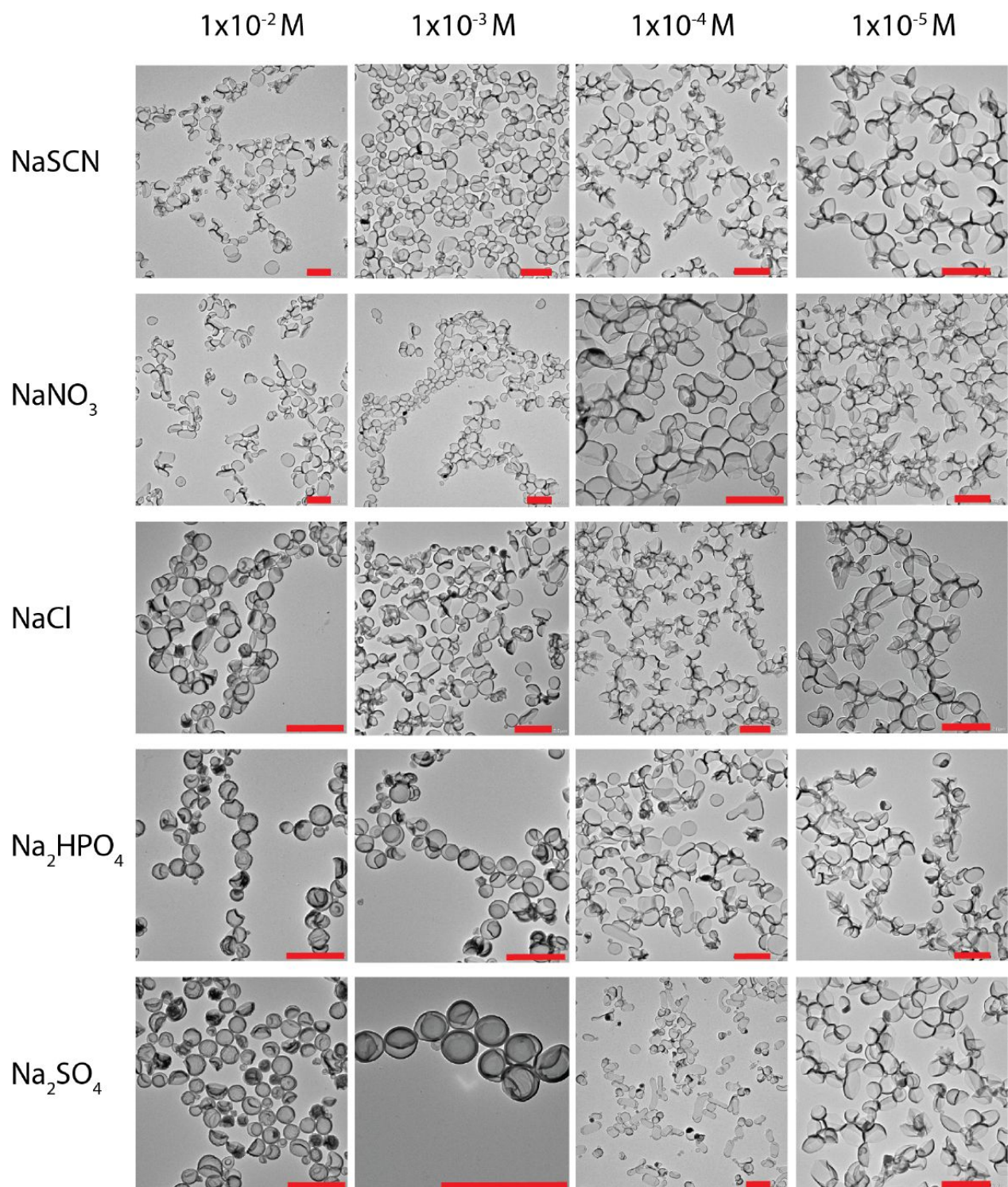


Figure S1. TEM images of polymersomes at different concentrations with variation of anions (NaSCN, NaNO₃, NaCl, Na₂HPO₄ and Na₂SO₄).

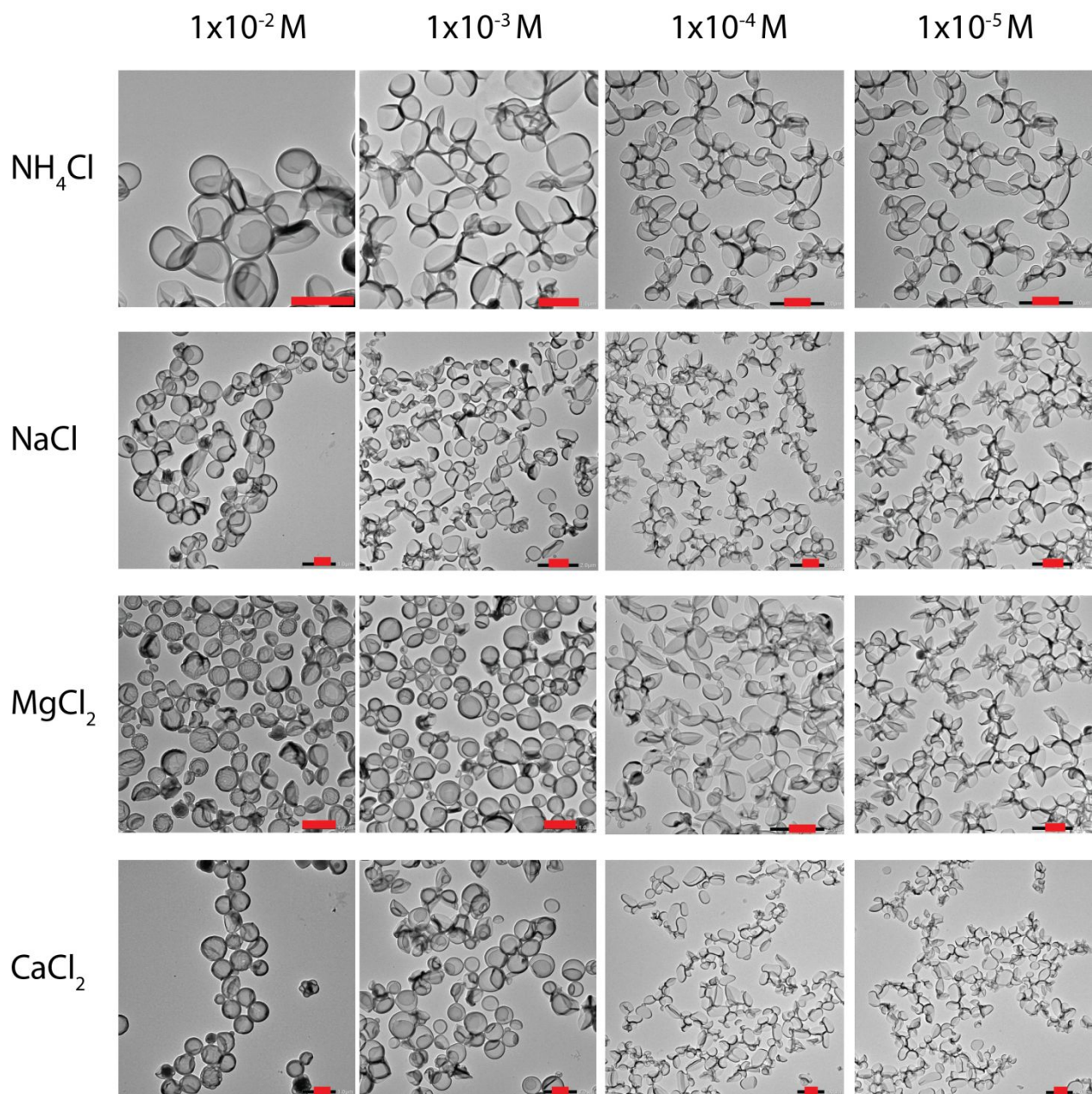


Figure S2. TEM images of polymersomes at different concentrations with variation of canions (NH_4Cl , NaCl , MgCl_2 and CaCl_2).

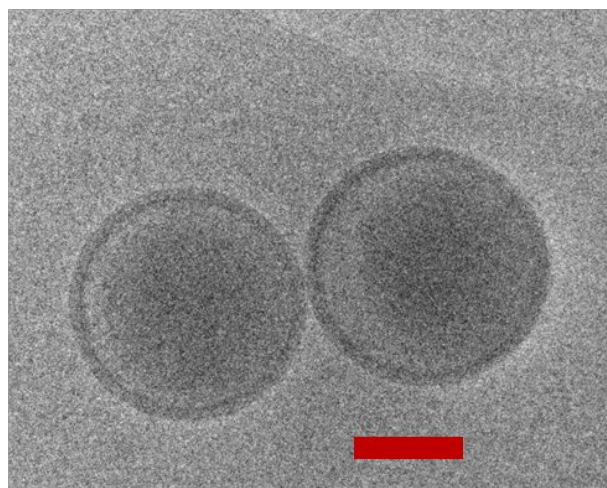
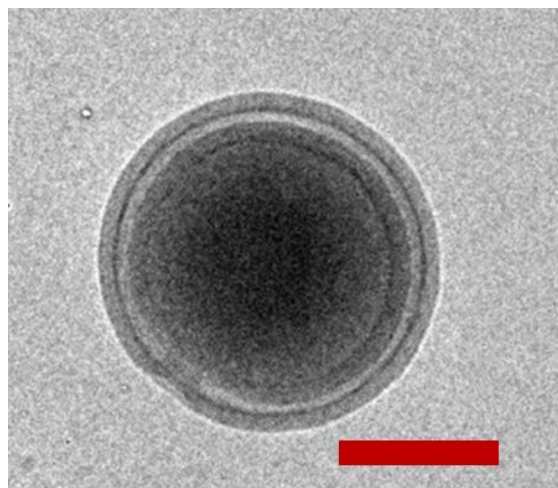


Figure S3. Cryo-TEM images of STO (left) and SV (right). Scale bar: 200 nm.