

Residue analysis and risk assessment of oxathiapiprolin and its metabolites in cucumber under field conditions

Wenzhuo Wang[†], Peipei Teng[†], Fengmao Liu^{†*}, Tingting Fan[†], Qingrong Peng[†],
Zongyi Wang[‡], Tongyao Hou[‡]

[†] Department of Applied Chemistry, College of Science, China Agricultural University, Beijing 100193, People's Republic of China.

[‡] Beijing Key Laboratory of Detection and Control of Spoilage Microorganisms and Pesticide Residues in Agricultural Products, Beijing University of Agriculture, Beijing 102206, People's Republic of China.

*Corresponding author:

Prof. Fengmao Liu, Pesticide Residue and Environmental Toxicology Lab,
Department of Applied Chemistry, College of Science, China Agricultural University,
No. 2 Yuanmingyuan West Road, Haidian District, Beijing, 100193 China.

Tel.: +86 10 6273 1978

Fax: +86 10 6273 3620

E-mail address: liufengmao@cau.edu.cn (Fengmao Liu*)

Support information

Figure S1. Effect of purify agent amount on the recoveries of oxathiapiprolin parent and metabolites from the cucumber samples at the 0.2mg kg^{-1} (n=3).

Figure S2. Effect of the participation of anhydrous MgSO_4 on the recoveries of oxathiapiprolin parent and metabolites from the cucumber samples at the 0.2mg kg^{-1} (n=3).

Figure S3. HPLC–MS/MS chromatograms of oxathiapiprolin and its two metabolites (IN-E8S72 and IN-SXS67) (a) in blank cucumber, and (b) fortified cucumber sample at 0.2 mg kg^{-1} .

Table S1. Terminal residues of oxathiapiprolin and its metabolites in cucumber.

Table S2. Dissipation of oxathiapiprolin and its metabolites in cucumber.

Table S3. The IEDI for oxathiapiprolin.

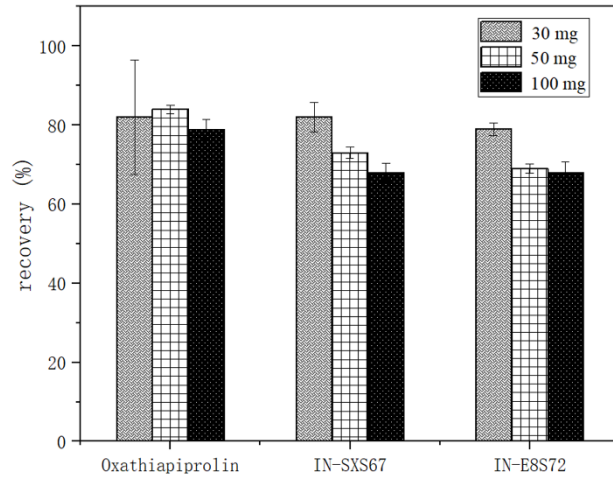


Figure S1. Effect of purify agent amount on the recoveries of oxathiapiprolin parent and metabolites from the cucumber samples at the 0.2mg kg^{-1} ($n=3$).

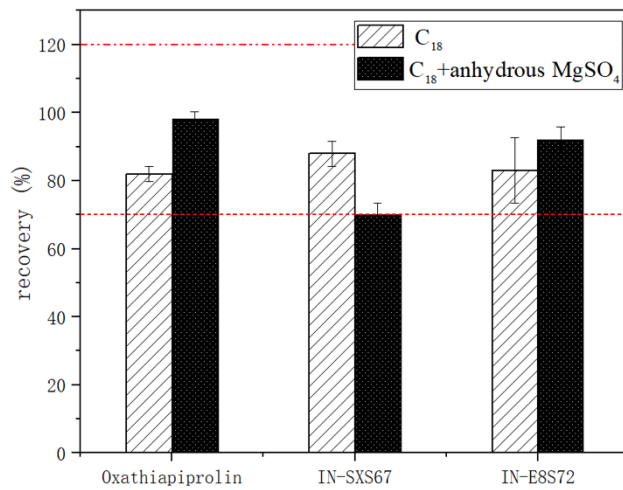


Figure S2. Effect of the participation of anhydrous $MgSO_4$ on the recoveries of oxathiapiprolin parent and metabolites from the cucumber samples at the 0.2mg kg^{-1} ($n=3$).

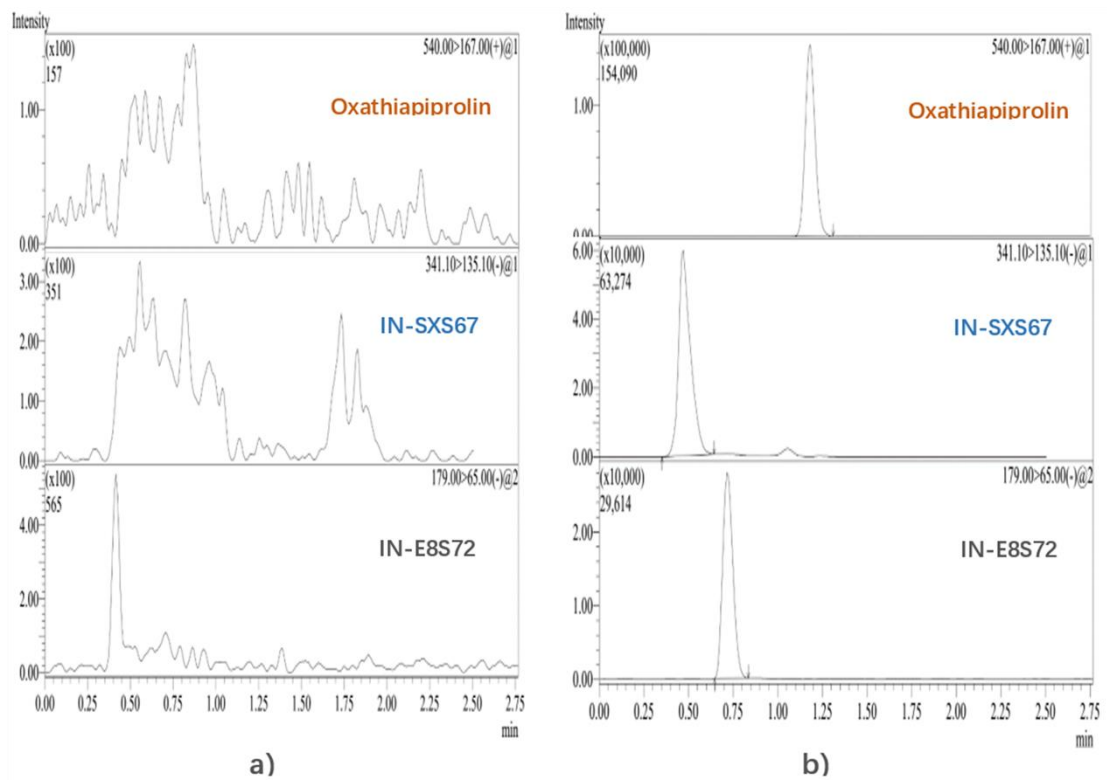


Figure S3. HPLC–MS/MS chromatograms of oxathiapiprolin and its two metabolites (IN-E8S72 and IN-SXS67) (a) in blank cucumber, and (b) fortified cucumber sample at 0.2 mg kg^{-1} .

Table S1. Terminal residues of oxathiapiprolin and its metabolites in cucumber.

Application rate (g a.i. ha ⁻¹)	Year	Trial site	Cultivation facilities	Preharvest interval (PHI)	Residue (mg kg ⁻¹)			
					oxathiapiprolin	IN-E8S72	IN-SXS67	
16.875	2017	Beijing	open field	3	<0.02	<0.02	<0.02	
				5	<0.02	<0.02	<0.02	
		Anhui	open field	3	<0.02	<0.02	<0.02	
				5	<0.02	<0.02	<0.02	
		Heilongjiang	greenhouse	3	<0.02	<0.02	<0.02	
				5	<0.02	<0.02	<0.02	
		2018	Beijing	greenhouse	3	<0.02	<0.02	<0.02
					5	<0.02	<0.02	<0.02
	Anhui		greenhouse	3	<0.02	<0.02	<0.02	
				5	<0.02	<0.02	<0.02	
	Henan		greenhouse	3	<0.02	<0.02	<0.02	
				5	<0.02	<0.02	<0.02	
	Shandong		greenhouse	3	<0.02	<0.02	<0.02	
				5	<0.02	<0.02	<0.02	
	Shandong		open field	3	<0.02	<0.02	<0.02	
				5	<0.02	<0.02	<0.02	
	Hubei		open field	3	<0.02	<0.02	<0.02	
				5	<0.02	<0.02	<0.02	
	Ningxia	open field	3	<0.02	<0.02	<0.02		
			5	<0.02	<0.02	<0.02		
Sichuan	open field	3	<0.02	<0.02	<0.02			

Application rate (g a.i. ha ⁻¹)	Year	Trial site	Cultivation facilities	Preharvest interval (PHI)	Residue (mg kg ⁻¹)		
					oxathiapiprolin	IN-E8S72	IN-SXS67
				5	<0.02	<0.02	<0.02
Heilongjiang	greenhouse	3	<0.02	<0.02	<0.02		
		5	<0.02	<0.02	<0.02		

Table S2. Dissipation of oxathiapiprolin and its metabolites in cucumber.

Sites	Time after treatment (days)	Residue (mg kg ⁻¹)		
		oxathiapiprolin	IN-E8S72	IN-SXS67
Beijing	0.08	0.24	<0.02	<0.02
	0.33	0.21	<0.02	<0.02
	1	0.17	<0.02	<0.02
	2	0.11	<0.02	<0.02
	3	0.12	<0.02	<0.02
	5	0.04	<0.02	<0.02
	7	0.02	<0.02	<0.02
	10	<0.02	<0.02	<0.02
	14	<0.02	<0.02	<0.02
Anhui	0.08	0.037	<0.02	<0.02
	0.33	0.026	<0.02	<0.02
	1	0.023	<0.02	<0.02
	2	0.02	<0.02	<0.02

Sites	Time after treatment (days)	Residue (mg kg ⁻¹)		
		oxathiapiprolin	IN-E8S72	IN-SXS67
	3	0.021	<0.02	<0.02
	5	0.02	<0.02	<0.02
	7	<0.02	<0.02	<0.02
	10	<0.02	<0.02	<0.02
	14	<0.02	<0.02	<0.02
	0.08	0.043	<0.02	<0.02
	0.33	0.041	<0.02	<0.02
	1	0.022	<0.02	<0.02
Heilongjiang	2	0.046	<0.02	<0.02
	3	0.036	<0.02	<0.02
	5	0.055	<0.02	<0.02
	7	<0.02	<0.02	<0.02
	10	<0.02	<0.02	<0.02
	14	<0.02	<0.02	<0.02

Table S3. The IEDI for oxathiapiprolin

Codex Code	Commodity description	STMR or STMR-P mg/kg	G01 (diet)	G01 intake	G02 (diet)	G02 intake	G03 (diet)	G03 intake	G04 (diet)	G04 intake	G05 (diet)	G05 intake	G06 (diet)	G06 intake	G07 (diet)	G07 intake
FB 2008	Small fruit vine climbing, raw (incl processed) (i.e. grapes)	0.21	16.25	3.41	28.96	6.08	2.87	0.60	24.22	5.09	9.33	1.96	68.64	14.41	142.23	29.87
FB 0269	Grape, raw (incl must, incl dried, incl juice, incl wine)	0.21	16.25	3.41	28.96	6.08	2.87	0.60	24.22	5.09	9.33	1.96	68.64	14.41	142.23	29.87
FB 0269	Grape, raw (incl must, incl dried, incl wine, excl juice)	0.21	16.07	3.37	28.60	6.01	2.81	0.59	23.85	5.01	9.03	1.90	68.58	14.40	141.53	29.72
FB 0269	Grape, raw (incl must, incl juice, incl wine, excl dried)	0.21	14.11	2.96	26.83	5.63	2.85	0.60	18.95	3.98	8.84	1.86	60.01	12.60	129.34	27.16
FB 0269	Grape, raw (incl dried, incl juice, incl wine, excl must)	0.21	15.91	3.34	28.84	6.06	2.87	0.60	24.20	5.08	9.33	1.96	68.62	14.41	142.07	29.83
FB 0269	Grape, raw (incl must, incl dried, incl juice, excl wine)	0.21	15.33	3.22	11.75	2.47	0.11	0.02	22.55	4.74	4.49	0.94	63.13	13.26	20.07	4.21
FB 0269	Grape, raw (incl must, incl dried, excl juice, excl wine)	0.21	15.15	3.18	11.38	2.39	0.10	0.02	22.18	4.66	4.19	0.88	63.07	13.24	19.37	4.07
FB 0269	Grape, raw (incl must, incl juice, excl dried, excl wine)	0.21	13.19	2.77	9.61	2.02	0.10	0.02	17.28	3.63	4.00	0.84	54.50	11.45	7.18	1.51
FB 0269	Grape, raw (incl must, incl wine, excl dried, excl juice)	0.21	13.94	2.93	26.46	5.56	2.79	0.59	18.58	3.90	8.54	1.79	59.95	12.59	128.64	27.01

Codex Code	Commodity description	STMR or STMR-P mg/kg	G01 (diet)	G01 intake	G02 (diet)	G02 intake	G03 (diet)	G03 intake	G04 (diet)	G04 intake	G05 (diet)	G05 intake	G06 (diet)	G06 intake	G07 (diet)	G07 intake
FB 0269	Grape, raw (incl dried, incl juice, excl wine, excl must)	0.21	14.99	3.15	11.62	2.44	0.11	0.02	22.53	4.73	4.48	0.94	63.11	13.25	19.92	4.18
FB 0269	Grape, raw (incl dried, incl wine, excl must, excl juice)	0.21	15.74	3.31	28.47	5.98	2.81	0.59	23.83	5.00	9.03	1.90	68.56	14.40	141.38	29.69
FB 0269	Grape, raw (incl juice, incl wine, excl must, excl dried)	0.21	13.78	2.89	26.70	5.61	2.85	0.60	18.92	3.97	8.84	1.86	59.99	12.60	129.18	27.13
FB 0269	Grape, raw (incl must, excl dried, excl juice, excl wine)	0.21	13.02	2.73	9.25	1.94	0.10	0.02	16.91	3.55	3.70	0.78	54.44	11.43	6.48	1.36
FB 0269	Grape, raw (incl dried, excl must, excl juice, excl wine)	0.21	14.82	3.11	11.26	2.36	0.10	0.02	22.16	4.65	4.19	0.88	63.05	13.24	19.22	4.04
FB 0269	Grape, raw (incl juice, excl must, excl dried, excl wine)	0.21	12.86	2.70	9.49	1.99	0.10	0.02	17.25	3.62	3.99	0.84	54.48	11.44	7.03	1.48
FB 0269	Grape, raw (incl wine, excl must, excl dried, excl juice)	0.21	13.60	2.86	26.34	5.53	2.79	0.59	18.55	3.90	8.54	1.79	59.93	12.59	128.49	26.98
FB 0269	Grape, raw	0.21	12.68	2.66	9.12	1.92	0.10	0.02	16.88	3.54	3.70	0.78	54.42	11.43	6.33	1.33
-	Grape must	0.13	0.33	0.04	0.13	0.02	0.10	0.01	0.10	0.01	0.10	0.01	0.10	0.01	0.16	0.02
DF 0269	Grape, dried (= currants, raisins and sultanas)	0.29	0.51	0.15	0.51	0.15	0.10	0.03	1.27	0.37	0.12	0.03	2.07	0.60	3.09	0.90
JF 0269	Grape juice	0.034	0.14	0.00	0.29	0.01	0.10	0.00	0.30	0.01	0.24	0.01	0.10	0.00	0.56	0.02
-	Grape wine (incl vermouths)	0.029	0.67	0.02	12.53	0.36	2.01	0.06	1.21	0.04	3.53	0.10	4.01	0.12	88.93	2.58
-	Onions, mature bulbs, dry	0.01	29.36	0.29	37.50	0.38	3.56	0.04	34.78	0.35	18.81	0.19	43.38	0.43	19.69	0.20

Codex Code	Commodity description	STMTR or STMTR-P mg/kg	G01 (diet)	G01 intake	G02 (diet)	G02 intake	G03 (diet)	G03 intake	G04 (diet)	G04 intake	G05 (diet)	G05 intake	G06 (diet)	G06 intake	G07 (diet)	G07 intake
-	Onions, green, raw	0.6	2.45	1.47	1.49	0.89	1.02	0.61	2.60	1.56	0.60	0.36	2.03	1.22	1.55	0.93
VB 0041	Cabbages, head, raw	0.14	2.73	0.38	27.92	3.91	0.55	0.08	4.47	0.63	4.27	0.60	10.25	1.44	8.97	1.26
VB 0400	Broccoli, raw	0.22	0.88	0.19	0.17	0.04	0.10	0.02	1.25	0.28	3.00	0.66	1.09	0.24	4.24	0.93
VB 0404	Cauliflower, raw	0.08	1.65	0.13	0.32	0.03	0.10	0.01	2.33	0.19	4.79	0.38	2.03	0.16	5.27	0.42
VC 0046	Melons, raw (excl watermelons)	0.03	8.90	0.27	8.64	0.26	0.80	0.02	17.90	0.54	2.80	0.08	29.17	0.88	9.20	0.28
VC 0424	Cucumber, raw	0.06	8.01	0.48	30.66	1.84	1.45	0.09	19.84	1.19	0.27	0.02	34.92	2.10	6.72	0.40
VO 0448	Tomato, raw (incl juice, incl paste, incl canned)	0.04	51.75	2.07	81.80	3.27	16.99	0.68	102.02	4.08	26.32	1.05	214.77	8.59	64.74	2.59
VO 0448	Tomato, raw (incl juice, incl paste, excl canned)	0.04	51.44	2.06	81.32	3.25	16.96	0.68	100.30	4.01	26.16	1.05	212.43	8.50	52.99	2.12
VO 0448	Tomato, raw (incl juice, incl canned, excl paste)	0.04	42.41	1.70	76.50	3.06	10.69	0.43	85.07	3.40	24.98	1.00	203.44	8.14	44.88	1.80
VO 0448	Tomato, raw (incl paste, incl canned, excl juice)	0.04	51.39	2.06	81.44	3.26	16.99	0.68	101.55	4.06	26.26	1.05	214.59	8.58	63.73	2.55
VO 0448	Tomato, raw (incl juice, excl paste, excl canned)	0.04	42.09	1.68	76.01	3.04	10.67	0.43	83.35	3.33	24.82	0.99	201.11	8.04	33.13	1.33

Codex Code	Commodity description	STMR or STMR-P mg/kg	G01 (diet)	G01 intake	G02 (diet)	G02 intake	G03 (diet)	G03 intake	G04 (diet)	G04 intake	G05 (diet)	G05 intake	G06 (diet)	G06 intake	G07 (diet)	G07 intake	
VO 0448	Tomato, raw (incl paste, excl juice, excl canned)	0.04	51.07	2.04	80.96	3.24	16.96	0.68	99.83	3.99	26.09	1.04	212.26	8.49	51.98	2.08	
VO 0448	Tomato, raw (incl canned, excl juice, excl paste)	0.04	42.04	1.68	76.13	3.05	10.69	0.43	84.59	3.38	24.92	1.00	203.27	8.13	43.88	1.76	
VO 0448	Tomato, raw	0.04	41.73	1.67	75.65	3.03	10.66	0.43	82.87	3.31	24.75	0.99	200.93	8.04	32.13	1.29	
-	Tomato, canned (& peeled)	0.0016	0.20	0.00	0.31	0.00	0.10	0.00	1.11	0.00	0.11	0.00	1.50	0.00	7.57	0.01	
-	Tomato, paste (i.e. concentrated tomato sauce/puree)	0.044	2.34	0.10	1.33	0.06	1.57	0.07	4.24	0.19	0.34	0.01	2.83	0.12	4.96	0.22	
JF 0448	Tomato, juice (single strength, incl concentrated)	0.006	0.29	0.00	0.29	0.00	0.10	0.00	0.38	0.00	0.10	0.00	0.14	0.00	0.80	0.00	
VL 0502	Spinach, raw	3.7	0.74	2.74	0.22	0.81	0.10	0.37	0.91	3.37	0.10	0.37	2.92	10.80	2.20	8.14	
VP 0064	Peas, green, without pods, raw (i.e. immature seeds only) (Pisum spp)	0.09	1.97	0.18	0.51	0.05	0.10	0.01	0.79	0.07	3.68	0.33	3.80	0.34	10.72	0.96	
Total intake (ug/person)				75.0		107		12.5		114.8		35.2		313.1		314.4	
Bodyweight per region (kg bw) =				60.0		60		60		60		60		60		60	
%ADI=				0.03%		0.04%		0.01%		0.05%		0.01%		0.13%		0.13%	

Codex Code	Commodity description	STMR or STMR-P mg/kg	G08 (diet)	G08 intake	G09 (diet)	G09 intake	G10 (diet)	G10 intake	G11 (diet)	G11 intake	G12 (diet)	G12 intake	G13 (diet)	G13 intake	G14 (diet)	G14 intake	G15 (diet)	G15 intake
FB 2008	Small fruit vine climbing, raw (incl processed) (i.e. grapes)	0.21	105.77	22.21	7.87	1.65	52.44	11.01	109.22	22.94	10.96	2.30	0.17	0.63	0.10	0.37	0.81	3.00
FB 0269	Grape, raw (incl must, incl dried, incl juice, incl wine)	0.21	105.77	22.21	7.87	1.65	52.44	11.01	109.22	22.94	10.96	2.30	0.17	0.63	0.10	0.37	0.81	3.00
FB 0269	Grape, raw (incl must, incl dried, incl wine, excl juice)	0.21	103.35	21.70	7.85	1.65	49.67	10.43	106.42	22.35	10.53	2.21	0.17	0.63	0.10	0.37	0.81	3.00
FB 0269	Grape, raw (incl must, incl juice, incl wine, excl dried)	0.21	99.46	20.89	7.76	1.63	46.71	9.81	91.48	19.21	9.23	1.94	0.17	0.63	0.10	0.37	0.81	3.00
FB 0269	Grape, raw (incl dried, incl juice, incl wine, excl must)	0.21	105.68	22.19	7.87	1.65	52.32	10.99	109.11	22.91	10.96	2.30	0.17	0.63	0.10	0.37	0.81	3.00
FB 0269	Grape, raw (incl must, incl dried, incl juice, excl wine)	0.21	20.04	4.21	5.35	1.12	18.01	3.78	25.20	5.29	2.94	0.62	0.17	0.63	0.10	0.37	0.81	3.00
FB 0269	Grape, raw (incl must, incl dried, excl juice, excl wine)	0.21	17.62	3.70	5.33	1.12	15.24	3.20	22.40	4.70	2.51	0.53	0.17	0.63	0.10	0.37	0.81	3.00
FB 0269	Grape, raw (incl must, incl juice, excl dried, excl wine)	0.21	13.73	2.88	5.24	1.10	12.27	2.58	7.46	1.57	1.21	0.25	0.17	0.63	0.10	0.37	0.81	3.00
FB 0269	Grape, raw (incl must, incl wine, excl dried, excl juice)	0.21	97.04	20.38	7.74	1.63	43.94	9.23	88.68	18.62	8.80	1.85	0.17	0.63	0.10	0.37	0.81	3.00
FB 0269	Grape, raw (incl dried, incl juice, excl wine, excl must)	0.21	19.96	4.19	5.35	1.12	17.88	3.75	25.09	5.27	2.94	0.62	0.17	0.63	0.10	0.37	0.81	3.00
FB 0269	Grape, raw (incl dried, incl wine, excl must, excl juice)	0.21	103.26	21.68	7.84	1.65	49.55	10.41	106.31	22.33	10.53	2.21	0.17	0.63	0.10	0.37	0.81	3.00

Codex Code	Commodity description	STMR or STMR-P mg/kg	G08 (diet)	G08 intake	G09 (diet)	G09 intake	G10 (diet)	G10 intake	G11 (diet)	G11 intake	G12 (diet)	G12 intake	G13 (diet)	G13 intake	G14 (diet)	G14 intake	G15 (diet)	G15 intake
FB 0269	Grape, raw (incl juice, incl wine, excl must, excl dried)	0.21	99.38	20.87	7.75	1.63	46.58	9.78	91.37	19.19	9.23	1.94	0.17	0.63	0.10	0.37	0.81	3.00
FB 0269	Grape, raw (incl must, excl dried, excl juice, excl wine)	0.21	11.31	2.38	5.21	1.09	9.50	2.00	4.66	0.98	0.78	0.16	0.17	0.63	0.10	0.37	0.81	3.00
FB 0269	Grape, raw (incl dried, excl must, excl juice, excl wine)	0.21	17.53	3.68	5.32	1.12	15.12	3.18	22.29	4.68	2.51	0.53	0.17	0.63	0.10	0.37	0.81	3.00
FB 0269	Grape, raw (incl juice, excl must, excl dried, excl wine)	0.21	13.65	2.87	5.23	1.10	12.15	2.55	7.35	1.54	1.21	0.25	0.17	0.63	0.10	0.37	0.81	3.00
FB 0269	Grape, raw (incl wine, excl must, excl dried, excl juice)	0.21	96.95	20.36	7.73	1.62	43.82	9.20	88.57	18.60	8.80	1.85	0.17	0.63	0.10	0.37	0.81	3.00
FB 0269	Grape, raw	0.21	11.22	2.36	5.21	1.09	9.38	1.97	4.55	0.96	0.78	0.16	0.17	0.63	0.10	0.37	0.81	3.00
-	Grape must	0.13	0.10	0.01	0.10	0.01	0.12	0.02	0.11	0.01	NC	-	0.17	0.63	0.10	0.37	0.81	3.00
DF 0269	Grape, dried (= currants, raisins and sultanas)	0.29	1.51	0.44	0.10	0.03	1.38	0.40	4.26	1.24	0.42	0.12	0.17	0.63	0.10	0.37	0.81	3.00
JF 0269	Grape juice	0.034	1.96	0.07	0.10	0.00	2.24	0.08	2.27	0.08	0.34	0.01	0.17	0.63	0.10	0.37	0.81	3.00
-	Grape wine (incl vermouths)	0.029	62.41	1.81	1.84	0.05	25.07	0.73	61.17	1.77	5.84	0.17	0.17	0.63	0.10	0.37	0.81	3.00
-	Onions, mature bulbs, dry	0.01	29.83	0.30	24.64	0.25	31.35	0.31	9.72	0.10	12.59	0.13	0.17	0.63	0.10	0.37	0.81	3.00
-	Onions, green, raw	0.6	0.74	0.44	1.05	0.63	3.74	2.24	0.94	0.56	6.45	3.87	0.17	0.63	0.10	0.37	0.81	3.00
VB 0041	Cabbages, head, raw	0.14	27.12	3.80	1.44	0.20	24.96	3.49	4.55	0.64	11.23	1.57	0.17	0.63	0.10	0.37	0.81	3.00
VB 0400	Broccoli, raw	0.22	1.76	0.39	NC	-	0.51	0.11	3.79	0.83	0.26	0.06	0.17	0.63	0.10	0.37	0.81	3.00
VB 0404	Cauliflower, raw	0.08	5.01	0.40	NC	-	2.70	0.22	5.57	0.45	0.49	0.04	0.17	0.63	0.10	0.37	0.81	3.00

Codex Code	Commodity description	STMR or STMR-P mg/kg	G08 (diet)	G08 intake	G09 (diet)	G09 intake	G10 (diet)	G10 intake	G11 (diet)	G11 intake	G12 (diet)	G12 intake	G13 (diet)	G13 intake	G14 (diet)	G14 intake	G15 (diet)	G15 intake
VC 0046	Melons, raw (excl watermelons)	0.03	11.95	0.36	14.63	0.44	8.99	0.27	7.86	0.24	2.46	0.07	0.17	0.63	0.10	0.37	0.81	3.00
VC 0424	Cucumber, raw	0.06	11.03	0.66	32.10	1.93	15.10	0.91	4.05	0.24	9.57	0.57	0.17	0.63	0.10	0.37	0.81	3.00
VO 0444	Peppers, chili, raw	0.04	14.00	5.60	8.25	3.30	5.77	2.31	6.44	2.58			0.17	0.63	0.10	0.37	0.81	3.00
VO 0448	Tomato, raw (incl juice, incl paste, incl canned)	0.04	68.31	2.73	36.05	1.44	82.09	3.28	54.50	2.18	2.53	0.47	0.17	0.63	0.10	0.37	0.81	3.00
VO 0448	Tomato, raw (incl juice, incl paste, excl canned)	0.04	64.18	2.57	35.59	1.42	80.59	3.22	43.15	1.73	11.69	0.44	0.17	0.63	0.10	0.37	0.81	3.00
VO 0448	Tomato, raw (incl juice, incl canned, excl paste)	0.04	55.49	2.22	35.44	1.42	75.65	3.03	27.00	1.08	11.06	0.38	0.17	0.63	0.10	0.37	0.81	3.00
VO 0448	Tomato, raw (incl paste, incl canned, excl juice)	0.04	68.22	2.73	35.98	1.44	81.33	3.25	54.01	2.16	9.61	0.46	0.17	0.63	0.10	0.37	0.81	3.00
VO 0448	Tomato, raw (incl juice, excl paste, excl canned)	0.04	51.36	2.05	34.99	1.40	74.14	2.97	15.64	0.63	11.59	0.36	0.17	0.63	0.10	0.37	0.81	3.00
VO 0448	Tomato, raw (incl paste, excl juice, excl canned)	0.04	64.09	2.56	35.52	1.42	79.82	3.19	42.65	1.71	8.98	0.44	0.17	0.63	0.10	0.37	0.81	3.00
VO 0448	Tomato, raw (incl canned, excl juice, excl paste)	0.04	55.41	2.22	35.38	1.42	74.88	3.00	26.50	1.06	10.96	0.38	0.17	0.63	0.10	0.37	0.81	3.00
VO 0448	Tomato, raw	0.04	51.27	2.05	34.92	1.40	73.37	2.93	15.15	0.61	9.51	0.36	0.17	0.63	0.10	0.37	0.81	3.00
-	Tomato, canned (& peeled)	0.0016	2.66	0.00	0.30	0.00	0.97	0.00	7.31	0.01	8.88	0.00	0.17	0.63	0.10	0.37	0.81	3.00
-	Tomato, paste (i.e. concentrated tomato sauce/puree)	0.044	3.20	0.14	0.15	0.01	1.61	0.07	6.88	0.30	0.41	0.02	0.17	0.63	0.10	0.37	0.81	3.00

Codex Code	Commodity description	STMR or STMR-P mg/kg	G08 (diet)	G08 intake	G09 (diet)	G09 intake	G10 (diet)	G10 intake	G11 (diet)	G11 intake	G12 (diet)	G12 intake	G13 (diet)	G13 intake	G14 (diet)	G14 intake	G15 (diet)	G15 intake
JF 0448	Tomato, juice (single strength, incl concentrated)	0.006	0.10	0.00	0.10	0.00	0.61	0.00	0.40	0.00	0.52	0.00	0.17	0.63	0.10	0.37	0.81	3.00
VL 0502	Spinach, raw	3.7	1.76	6.51	13.38	49.51	2.94	10.88	5.53	20.46	0.10	0.37	0.17	0.63	0.10	0.37	0.81	3.00
VP 0064	Peas, green, without pods, raw (i.e. immature seeds only) (Pisum spp)	0.09	1.99	0.18	2.72	0.24	4.26	0.38	4.23	0.38	NC	-	0.21	0.02	0.10	0.01	5.51	0.50
Total intake (ug/person)			259		91.6		162.2		255.1		33.3		9.6		7.4		262.5	
Bodyweight per region (kg bw) =			60		55		60		60		60		60		60		60	
%ADI=			0.11%		0.04%		0.07%		0.11%		0.01%		0.004%		0.003%		0.109%	

Codex Code	Commodity description	STMR or STMR-P (mg/kg)	G16 (diet)	G16 intake	G17 (diet)	G17 intake
FB 2008	Small fruit vine climbing, raw (incl processed) (i.e. grapes)	0.21	0.74	0.16	44.23	9.29
FB 0269	Grape, raw (incl must, incl dried, incl juice, incl wine)	0.21	0.74	0.16	44.23	9.29
FB 0269	Grape, raw (incl must, incl dried, incl wine, excl juice)	0.21	0.74	0.16	44.23	9.29
FB 0269	Grape, raw (incl must, incl juice, incl wine, excl dried)	0.21	0.73	0.15	44.12	9.27
FB 0269	Grape, raw (incl dried, incl juice, incl wine, excl must)	0.21	0.74	0.16	44.04	9.25
FB 0269	Grape, raw (incl must, incl dried, incl juice, excl wine)	0.21	0.10	0.02	0.40	0.08
FB 0269	Grape, raw (incl must, incl dried, excl juice, excl wine)	0.21	0.10	0.02	0.40	0.08
FB 0269	Grape, raw (incl must, incl juice, excl dried, excl wine)	0.21	0.10	0.02	0.28	0.06
FB 0269	Grape, raw (incl must, incl wine, excl dried, excl juice)	0.21	0.73	0.15	44.12	9.27
FB 0269	Grape, raw (incl dried, incl juice, excl wine, excl must)	0.21	0.10	0.02	0.21	0.04
FB 0269	Grape, raw (incl dried, incl wine, excl must, excl juice)	0.21	0.74	0.16	44.04	9.25
FB 0269	Grape, raw (incl juice, incl wine, excl must, excl dried)	0.21	0.73	0.15	43.92	9.22
FB 0269	Grape, raw (incl must, excl dried, excl juice, excl wine)	0.21	0.10	0.02	0.28	0.06
FB 0269	Grape, raw (incl dried, excl must, excl juice, excl wine)	0.21	0.10	0.02	0.21	0.04
FB 0269	Grape, raw (incl juice, excl must, excl dried, excl wine)	0.21	0.10	0.02	0.10	0.02
FB 0269	Grape, raw (incl wine, excl must, excl dried, excl juice)	0.21	0.73	0.15	43.92	9.22
FB 0269	Grape, raw	0.21	0.10	0.02	0.10	0.02
-	Grape must	0.13	0.10	0.01	0.19	0.02
DF 0269	Grape, dried (= currants, raisins and sultanas)	0.29	0.10	0.03	0.10	0.03

Codex Code	Commodity description	STM ^R or STM ^R -P (mg/kg)	G16 (diet)	G16 intake	G17 (diet)	G17 intake
JF 0269	Grape juice	0.034	0.10	0.00	NC	-
-	Grape wine (incl vermouths)	0.029	0.52	0.02	31.91	0.93
-	Onions, mature bulbs, dry	0.01	9.61	0.10	2.11	0.02
-	Onions, green, raw	0.6	NC	-	6.30	3.78
VB 0041	Cabbages, head, raw	0.14	0.10	0.01	NC	-
VB 0400	Broccoli, raw	0.22	0.10	0.02	NC	-
VB 0404	Cauliflower, raw	0.08	0.10	0.01	NC	-
VC 0046	Melons, raw (excl watermelons)	0.03	0.10	0.00	NC	-
VC 0424	Cucumber, raw	0.06	0.10	0.01	0.10	0.01
VO 0448	Tomato, raw (incl juice, incl paste, incl canned)	0.04	0.10	0.04	NC	-
VO 0448	Tomato, raw (incl juice, incl paste, excl canned)	0.04	2.00	0.08	12.50	0.50
VO 0448	Tomato, raw (incl juice, incl canned, excl paste)	0.04	1.88	0.08	12.50	0.50
VO 0448	Tomato, raw (incl paste, incl canned, excl juice)	0.04	1.04	0.04	0.11	0.00
VO 0448	Tomato, raw (incl juice, excl paste, excl canned)	0.04	1.99	0.08	12.48	0.50
VO 0448	Tomato, raw (incl paste, excl juice, excl canned)	0.04	0.92	0.04	0.11	0.00
VO 0448	Tomato, raw (incl canned, excl juice, excl paste)	0.04	1.88	0.08	12.48	0.50
VO 0448	Tomato, raw	0.04	1.04	0.04	0.10	0.00
-	Tomato, canned (& peeled)	0.0016	0.92	0.04	0.10	0.00
-	Tomato, paste (i.e. concentrated tomato sauce/puree)	0.044	0.10	0.00	NC	-
JF 0448	Tomato, juice (single strength, incl concentrated)	0.006	0.24	0.01	3.10	0.14
VL 0502	Spinach, raw	3.7	0.10	0.00	0.10	0.00
VP 0064	Peas, green, without pods, raw (i.e. immature seeds only) (Pisum spp)	0.09	NC	-	NC	-

Codex Code	Commodity description	STM or STM-P (mg/kg)	G16 (diet)	G16 intake	G17 (diet)	G17 intake
		Total intake (ug/person)		2.7		90.7
		Bodyweight per region (kg bw) =		60		60
		%ADI=		0.001%		0.038%