

Supporting Information

Direct Observation of Native Silk Fibroin Conformation in Silk Gland of *Bombyx mori* Silkworm

Linli Hu,[†] Yanchen Han,[†] Shengjie Ling,^{*,‡} Yufang Huang,^{||} Jinrong Yao,[†]

Zhengzhong Shao,[†] Xin Chen^{*,†}

[†]State Key Laboratory of Molecular Engineering of Polymers, Department of
Macromolecular Science, Laboratory of Advanced Materials, Fudan University,
Shanghai, 200433, People's Republic of China.

[‡]School of Physical Science and Technology, ShanghaiTech University, Shanghai,
201210, People's Republic of China.

^{||}Department of Material Science, Fudan University, Shanghai, 200433, People's
Republic of China.

* *E-mail: lingshj@shanghaitech.edu.cn (S.L.), chenx@fudan.edu.cn (X.C.).*

Number of pages: 3

Number of figures: 2

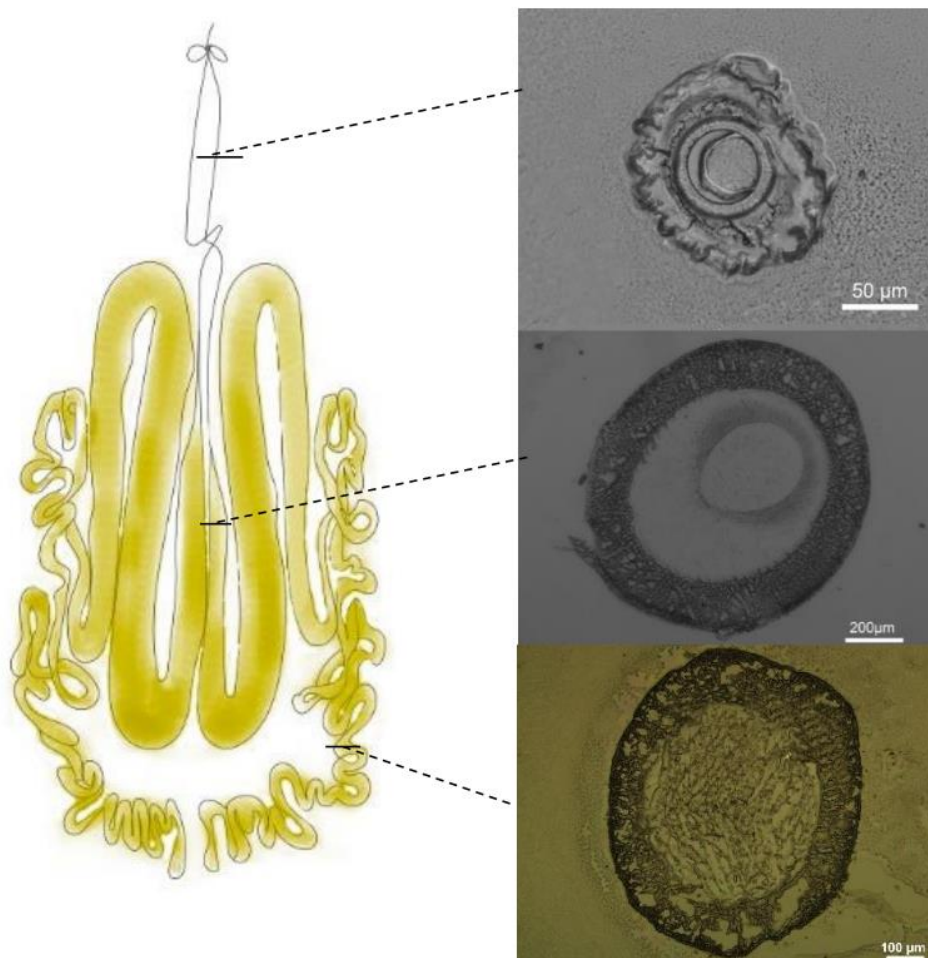


Figure S1. Schematic of *Bombyx mori* silk gland and microscopic images of cross-sections in ASG, MSG, and PSG.

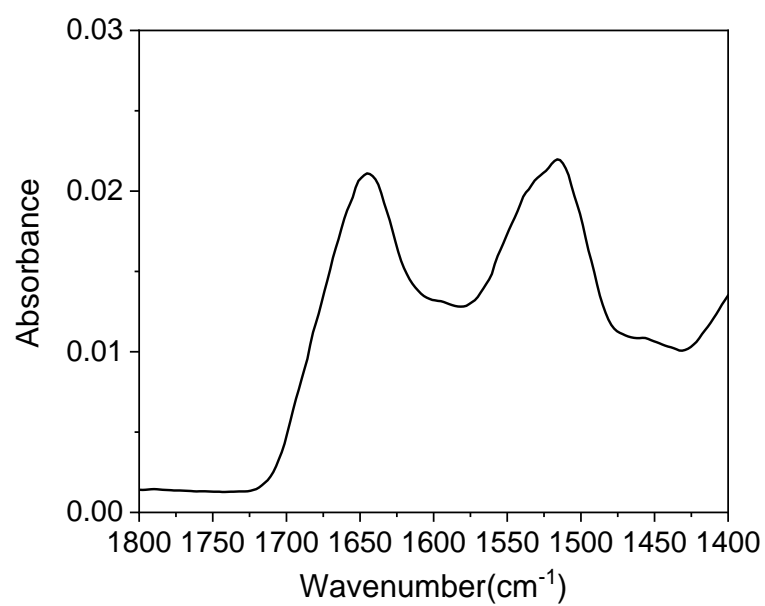


Figure S2. S-FTIR spectrum of the sericin in *Bombyx mori* silk gland.