

**Supporting Information for**

**Enhanced Reactivity Results in Reduced Catalytic Performance. Unexpected Ligand  
Reactivity of a Bis(*N*-2,6-diisopropylphenylperfluorophenyl-amidate)titanium-  
bis(diethylamido) Hydroamination Precatalyst.**

Jason A. Bexrud, Chunyu Li and Laurel L. Schafer\*

*Department of Chemistry, University of British Columbia, 6174 University Boulevard,  
Vancouver, B.C., Canada, V6T 1Z1.*

### Crystallographic data for 3

```
ls032/ls032.cif
100644      765      60      56220 10640776145  6446
data_ls032

_audit_creation_method      SHELXL-97
_chemical_name_systematic
;
?
;
_chemical_name_common      ?
_chemical_melting_point    ?
_chemical_formula_moiety   'C58 H66 F10 N4 O2 Ti'
_chemical_formula_sum
'C58 H66 F10 N4 O2 Ti'
_chemical_formula_weight   1245.26

loop_
_atom_type_symbol
_atom_type_description
_atom_type_scatter_dispersion_real
_atom_type_scatter_dispersion_imag
_atom_type_scatter_source
'C' 'C' 0.0033 0.0016
'International Tables Vol C Tables 4.2.6.8 and 6.1.1.4'
'H' 'H' 0.0000 0.0000
'International Tables Vol C Tables 4.2.6.8 and 6.1.1.4'
'N' 'N' 0.0061 0.0033
'International Tables Vol C Tables 4.2.6.8 and 6.1.1.4'
'O' 'O' 0.0106 0.0060
'International Tables Vol C Tables 4.2.6.8 and 6.1.1.4'
'F' 'F' 0.0171 0.0103
'International Tables Vol C Tables 4.2.6.8 and 6.1.1.4'
'Ti' 'Ti' 0.2776 0.4457
'International Tables Vol C Tables 4.2.6.8 and 6.1.1.4'

_symmetry_cell_setting      monoclinic
_symmetry_space_group_name_H-M 'C2/c'

loop_
_symmetry_equiv_pos_as_xyz
'x, y, z'
'-x, y, -z+1/2'
'x+1/2, y+1/2, z'
'-x+1/2, y+1/2, -z+1/2'
'-x, -y, -z'
'x, -y, z-1/2'
'-x+1/2, -y+1/2, -z'
'x+1/2, -y+1/2, z-1/2'

_cell_length_a              29.207(3)
_cell_length_b              10.8442(9)
_cell_length_c              22.707(2)
_cell_angle_alpha          90.00
```

_cell_angle_beta	115.209(4)
_cell_angle_gamma	90.00
_cell_volume	6507.0(10)
_cell_formula_units_Z	4
_cell_measurement_temperature	293(2)
_cell_measurement_reflns_used	7703
_cell_measurement_theta_min	1.54
_cell_measurement_theta_max	28.02
_exptl_crystal_description	irregular
_exptl_crystal_colour	red
_exptl_crystal_size_max	0.40
_exptl_crystal_size_mid	0.40
_exptl_crystal_size_min	0.20
_exptl_crystal_density_meas	'not measured'
_exptl_crystal_density_diffn	1.271
_exptl_crystal_density_method	'not measured'
_exptl_crystal_F_000	2616
_exptl_absorpt_coefficient_mu	0.207
_exptl_absorpt_correction_type	'multi-scan'
_exptl_absorpt_correction_T_min	?
_exptl_absorpt_correction_T_max	?
_exptl_absorpt_process_details	?
_exptl_special_details	
;	
?	
;	
_diffn_ambient_temperature	293(2)
_diffn_radiation_wavelength	0.71073
_diffn_radiation_type	MoK\alpha
_diffn_radiation_source	'fine-focus sealed tube'
_diffn_radiation_monochromator	graphite
_diffn_measurement_device_type	?
_diffn_measurement_method	?
_diffn_detector_area_resol_mean	?
_diffn_standards_number	?
_diffn_standards_interval_count	?
_diffn_standards_interval_time	?
_diffn_standards_decay_%	?
_diffn_reflns_number	72029
_diffn_reflns_av_R_equivalents	0.0426
_diffn_reflns_av_sigmaI/netI	0.0308
_diffn_reflns_limit_h_min	-38
_diffn_reflns_limit_h_max	38
_diffn_reflns_limit_k_min	-13
_diffn_reflns_limit_k_max	14
_diffn_reflns_limit_l_min	-29
_diffn_reflns_limit_l_max	29
_diffn_reflns_theta_min	1.54
_diffn_reflns_theta_max	28.02
_reflns_number_total	7703
_reflns_number_gt	5879
_reflns_threshold_expression	>2sigma(I)
_computing_data_collection	'APEX'

```

_computing_cell_refinement      'APEX'
_computing_data_reduction      'APEX'
_computing_structure_solution  'SIR-92'
_computing_structure_refinement 'SHELXL-97 (Sheldrick, 1997)'
_computing_molecular_graphics  'ORTEP-3 (Farrugia, 1997)'
_computing_publication_material 'PLATON (Spek, 1990)'

```

```
_refine_special_details
```

```
;
```

Refinement of  $F^2$  against ALL reflections. The weighted R-factor wR and goodness of fit S are based on  $F^2$ , conventional R-factors R are based on F, with F set to zero for negative  $F^2$ . The threshold expression of  $F^2 > 2\sigma(F^2)$  is used only for calculating R-factors(gt) etc. and is not relevant to the choice of reflections for refinement. R-factors based on  $F^2$  are statistically about twice as large as those based on F, and R-factors based on ALL data will be even larger.

```
;
```

```

_refine_ls_structure_factor_coef  Fsqd
_refine_ls_matrix_type           full
_refine_ls_weighting_scheme      calc
_refine_ls_weighting_details
'calc w=1/[\s^2^(Fo^2^)+(0.0500P)^2^+3.7432P] where P=(Fo^2^+2Fc^2^)/3'
_atom_sites_solution_primary     direct
_atom_sites_solution_secondary  difmap
_atom_sites_solution_hydrogens   geom
_refine_ls_hydrogen_treatment   mixed
_refine_ls_extinction_method     none
_refine_ls_extinction_coef       ?
_refine_ls_number_reflns        7703
_refine_ls_number_parameters     393
_refine_ls_number_restraints     0
_refine_ls_R_factor_all          0.0586
_refine_ls_R_factor_gt           0.0390
_refine_ls_wR_factor_ref         0.1069
_refine_ls_wR_factor_gt         0.0980
_refine_ls_goodness_of_fit_ref   1.027
_refine_ls_restrained_S_all      1.027
_refine_ls_shift/su_max          0.000
_refine_ls_shift/su_mean         0.000

```

```
loop_
```

```

_atom_site_label
_atom_site_type_symbol
_atom_site_fract_x
_atom_site_fract_y
_atom_site_fract_z
_atom_site_U_iso_or_equiv
_atom_site_adp_type
_atom_site_occupancy
_atom_site_symmetry_multiplicity
_atom_site_calc_flag
_atom_site_refinement_flags
_atom_site_disorder_assembly
_atom_site_disorder_group
Ti1 Ti 0.0000 0.09317(3) 0.2500 0.02221(9) Uani 1 2 d S . .
F3 F -0.19728(4) -0.39339(9) 0.29280(5) 0.0463(2) Uani 1 1 d . . .

```

F2 F -0.21993(3) -0.14794(9) 0.27840(5) 0.0477(2) Uani 1 1 d . . .  
F5 F -0.05339(3) -0.32004(8) 0.25490(5) 0.0436(2) Uani 1 1 d . . .  
F1 F -0.15962(3) 0.01027(8) 0.25301(5) 0.0406(2) Uani 1 1 d . . .  
F4 F -0.11462(4) -0.47839(8) 0.28017(5) 0.0501(3) Uani 1 1 d . . .  
O1 O -0.02357(3) -0.05953(9) 0.29243(4) 0.0264(2) Uani 1 1 d . . .  
N1 N -0.07769(4) 0.02220(10) 0.19916(5) 0.0231(2) Uani 1 1 d . . .  
N3 N -0.00211(4) 0.20162(11) 0.31467(5) 0.0272(2) Uani 1 1 d . . .  
C1 C -0.06807(5) -0.05952(12) 0.24571(6) 0.0230(3) Uani 1 1 d . . .  
C3 C -0.12304(5) 0.01989(13) 0.13895(6) 0.0249(3) Uani 1 1 d . . .  
C4 C -0.15856(5) 0.11745(13) 0.12455(7) 0.0281(3) Uani 1 1 d . . .  
C8 C -0.13044(5) -0.07573(14) 0.09323(7) 0.0296(3) Uani 1 1 d . . .  
C15 C -0.10537(5) -0.14988(12) 0.25133(6) 0.0246(3) Uani 1 1 d . . .  
C17 C -0.17928(5) -0.19043(14) 0.27168(7) 0.0315(3) Uani 1 1 d . . .  
C18 C -0.16772(5) -0.31428(14) 0.27939(7) 0.0325(3) Uani 1 1 d . . .  
C16 C -0.14834(5) -0.11041(13) 0.25773(7) 0.0279(3) Uani 1 1 d . . .  
C19 C -0.12553(6) -0.35688(14) 0.27299(7) 0.0333(3) Uani 1 1 d . . .  
C20 C -0.09468(5) -0.27525(13) 0.25982(7) 0.0297(3) Uani 1 1 d . . .  
C5 C -0.20175(6) 0.11403(15) 0.06546(7) 0.0364(3) Uani 1 1 d . . .  
H5 H -0.2258 0.1763 0.0559 0.044 Uiso 1 1 calc R . . .  
C103 C 0.08623(15) 0.4044(3) 0.53862(13) 0.0990(10) Uani 1 1 d . . .  
H103 H 0.0791 0.4879 0.5305 0.119 Uiso 1 1 calc R . . .  
C10 C -0.13424(6) 0.33867(15) 0.13898(8) 0.0419(4) Uani 1 1 d . . .  
H10A H -0.1287 0.4094 0.1666 0.063 Uiso 1 1 calc R . . .  
H10B H -0.1606 0.3565 0.0967 0.063 Uiso 1 1 calc R . . .  
H10C H -0.1036 0.3190 0.1350 0.063 Uiso 1 1 calc R . . .  
C9 C -0.15000(5) 0.22855(14) 0.16870(7) 0.0315(3) Uani 1 1 d . . .  
H9 H -0.1220 0.2095 0.2108 0.038 Uiso 1 1 calc R . . .  
C12 C -0.09334(6) -0.18178(15) 0.10323(8) 0.0363(3) Uani 1 1 d . . .  
H12 H -0.0657 -0.1744 0.1469 0.044 Uiso 1 1 calc R . . .  
C025 C 0.01636(6) 0.15767(14) 0.38259(7) 0.0329(3) Uani 1 1 d . . .  
H02A H 0.0400 0.2177 0.4113 0.040 Uiso 1 1 calc R . . .  
H02B H 0.0346 0.0809 0.3869 0.040 Uiso 1 1 calc R . . .  
C026 C -0.02740(6) 0.32260(14) 0.30363(7) 0.0344(3) Uani 1 1 d . . .  
H02C H -0.0579 0.3142 0.3103 0.041 Uiso 1 1 calc R . . .  
H02D H -0.0376 0.3458 0.2585 0.041 Uiso 1 1 calc R . . .  
C7 C -0.17421(6) -0.07258(16) 0.03436(7) 0.0385(4) Uani 1 1 d . . .  
H7 H -0.1795 -0.1344 0.0038 0.046 Uiso 1 1 calc R . . .  
C6 C -0.20975(6) 0.02036(16) 0.02071(8) 0.0421(4) Uani 1 1 d . . .  
H6 H -0.2388 0.0199 -0.0183 0.051 Uiso 1 1 calc R . . .  
C029 C -0.02587(7) 0.13676(18) 0.40444(8) 0.0473(4) Uani 1 1 d . . .  
H02E H -0.0115 0.1081 0.4486 0.071 Uiso 1 1 calc R . . .  
H02F H -0.0491 0.0762 0.3769 0.071 Uiso 1 1 calc R . . .  
H02G H -0.0435 0.2129 0.4015 0.071 Uiso 1 1 calc R . . .  
C106 C 0.10506(10) 0.1586(3) 0.56221(11) 0.0851(8) Uani 1 1 d . . .  
H106 H 0.1112 0.0748 0.5704 0.102 Uiso 1 1 calc R . . .  
C14 C -0.11895(7) -0.30802(16) 0.09796(9) 0.0466(4) Uani 1 1 d . . .  
H14A H -0.0947 -0.3725 0.1046 0.070 Uiso 1 1 calc R . . .  
H14B H -0.1464 -0.3164 0.0555 0.070 Uiso 1 1 calc R . . .  
H14C H -0.1317 -0.3139 0.1305 0.070 Uiso 1 1 calc R . . .  
C11 C -0.19641(6) 0.26351(16) 0.18057(9) 0.0434(4) Uani 1 1 d . . .  
H11A H -0.1885 0.3339 0.2088 0.065 Uiso 1 1 calc R . . .  
H11B H -0.2055 0.1954 0.2005 0.065 Uiso 1 1 calc R . . .  
H11C H -0.2243 0.2830 0.1398 0.065 Uiso 1 1 calc R . . .  
C109 C 0.74947(8) 0.6694(2) 0.12608(9) 0.0630(6) Uani 1 1 d . . .  
H109 H 0.7744 0.6165 0.1257 0.076 Uiso 1 1 calc R . . .  
C102 C 0.05789(9) 0.3334(3) 0.55957(11) 0.0759(7) Uani 1 1 d . . .  
H102 H 0.0315 0.3693 0.5662 0.091 Uiso 1 1 calc R . . .

C13 C -0.07073(7) -0.17546(19) 0.05324(10) 0.0546(5) Uani 1 1 d . . .  
H13A H -0.0475 -0.2425 0.0606 0.082 Uiso 1 1 calc R . .  
H13B H -0.0532 -0.0986 0.0579 0.082 Uiso 1 1 calc R . .  
H13C H -0.0974 -0.1814 0.0101 0.082 Uiso 1 1 calc R . .  
C108 C 0.71173(10) 0.6253(2) 0.14176(10) 0.0678(6) Uani 1 1 d . . .  
H108 H 0.7113 0.5424 0.1521 0.081 Uiso 1 1 calc R . .  
C101 C 0.06711(8) 0.2127(3) 0.57088(10) 0.0671(6) Uani 1 1 d . . .  
H101 H 0.0470 0.1658 0.5849 0.081 Uiso 1 1 calc R . .  
C105 C 0.13492(11) 0.2268(5) 0.54124(15) 0.1232(16) Uani 1 1 d . . .  
H105 H 0.1612 0.1894 0.5350 0.148 Uiso 1 1 calc R . .  
C107 C 0.67482(9) 0.7036(3) 0.14207(10) 0.0724(7) Uani 1 1 d . . .  
H107 H 0.6492 0.6735 0.1522 0.087 Uiso 1 1 calc R . .  
C110 C 0.75003(9) 0.7921(2) 0.11102(10) 0.0686(6) Uani 1 1 d . . .  
H110 H 0.7753 0.8223 0.1003 0.082 Uiso 1 1 calc R . .  
C111 C 0.71336(10) 0.8694(2) 0.11190(11) 0.0753(7) Uani 1 1 d . . .  
H111 H 0.7139 0.9524 0.1019 0.090 Uiso 1 1 calc R . .  
C112 C 0.67561(9) 0.8256(2) 0.12748(11) 0.0735(6) Uani 1 1 d . . .  
H112 H 0.6508 0.8787 0.1281 0.088 Uiso 1 1 calc R . .  
C104 C 0.12549(16) 0.3517(5) 0.52950(14) 0.1270(17) Uani 1 1 d . . .  
H104 H 0.1455 0.3994 0.5156 0.152 Uiso 1 1 calc R . .  
C051 C 0.00439(7) 0.42691(16) 0.34693(9) 0.0490(4) Uani 1 1 d . . .  
H05A H -0.0150 0.5017 0.3364 0.074 Uiso 1 1 calc R . .  
H05B H 0.0343 0.4382 0.3399 0.074 Uiso 1 1 calc R . .  
H05C H 0.0139 0.4064 0.3918 0.074 Uiso 1 1 calc R . .

loop\_

\_atom\_site\_aniso\_label  
\_atom\_site\_aniso\_U\_11  
\_atom\_site\_aniso\_U\_22  
\_atom\_site\_aniso\_U\_33  
\_atom\_site\_aniso\_U\_23  
\_atom\_site\_aniso\_U\_13  
\_atom\_site\_aniso\_U\_12  
Ti1 0.01985(16) 0.02325(18) 0.02262(17) 0.000 0.00818(13) 0.000  
F3 0.0424(5) 0.0461(6) 0.0542(6) 0.0064(5) 0.0241(5) -0.0151(4)  
F2 0.0374(5) 0.0513(6) 0.0687(7) 0.0021(5) 0.0363(5) -0.0009(4)  
F5 0.0398(5) 0.0338(5) 0.0664(6) 0.0088(4) 0.0314(5) 0.0086(4)  
F1 0.0428(5) 0.0301(5) 0.0613(6) 0.0021(4) 0.0342(5) 0.0044(4)  
F4 0.0554(6) 0.0268(5) 0.0732(7) 0.0073(5) 0.0324(5) -0.0003(4)  
O1 0.0216(5) 0.0296(5) 0.0246(5) 0.0022(4) 0.0067(4) 0.0001(4)  
N1 0.0199(5) 0.0261(6) 0.0230(5) 0.0005(4) 0.0088(4) 0.0008(4)  
N3 0.0253(6) 0.0271(6) 0.0277(6) -0.0027(5) 0.0100(5) 0.0003(5)  
C1 0.0213(6) 0.0235(7) 0.0250(6) -0.0026(5) 0.0108(5) 0.0002(5)  
C3 0.0202(6) 0.0300(7) 0.0239(6) 0.0019(5) 0.0088(5) -0.0006(5)  
C4 0.0240(7) 0.0326(8) 0.0278(7) 0.0035(6) 0.0113(6) 0.0018(6)  
C8 0.0262(7) 0.0337(8) 0.0277(7) -0.0008(6) 0.0105(6) -0.0011(6)  
C15 0.0233(6) 0.0273(7) 0.0225(6) -0.0001(5) 0.0090(5) -0.0024(5)  
C17 0.0245(7) 0.0397(9) 0.0322(7) -0.0015(6) 0.0140(6) -0.0024(6)  
C18 0.0305(7) 0.0357(8) 0.0301(7) 0.0006(6) 0.0119(6) -0.0105(6)  
C16 0.0276(7) 0.0272(7) 0.0284(7) -0.0010(6) 0.0116(6) -0.0003(6)  
C19 0.0369(8) 0.0261(8) 0.0346(8) 0.0017(6) 0.0131(7) -0.0022(6)  
C20 0.0259(7) 0.0312(8) 0.0324(7) 0.0016(6) 0.0128(6) 0.0014(6)  
C5 0.0273(7) 0.0396(9) 0.0359(8) 0.0061(7) 0.0072(6) 0.0064(6)  
C103 0.130(3) 0.0816(19) 0.0536(15) -0.0108(13) 0.0082(17) -0.0333(19)  
C10 0.0441(9) 0.0368(9) 0.0488(10) -0.0001(7) 0.0236(8) 0.0006(7)  
C9 0.0271(7) 0.0339(8) 0.0336(7) 0.0020(6) 0.0131(6) 0.0062(6)  
C12 0.0313(8) 0.0392(9) 0.0348(8) -0.0093(7) 0.0106(6) 0.0033(6)

C025 0.0343(8) 0.0357(8) 0.0269(7) -0.0031(6) 0.0112(6) -0.0007(6)  
 C026 0.0320(8) 0.0335(8) 0.0349(8) -0.0020(6) 0.0115(6) 0.0053(6)  
 C7 0.0377(8) 0.0424(9) 0.0276(7) -0.0055(7) 0.0065(6) -0.0035(7)  
 C6 0.0330(8) 0.0485(10) 0.0290(8) 0.0039(7) -0.0020(6) 0.0000(7)  
 C029 0.0536(10) 0.0575(11) 0.0381(9) -0.0032(8) 0.0265(8) -0.0035(9)  
 C106 0.0709(16) 0.102(2) 0.0548(14) -0.0233(13) -0.0001(12) 0.0181(15)  
 C14 0.0464(10) 0.0367(9) 0.0477(10) -0.0062(8) 0.0116(8) 0.0048(7)  
 C11 0.0383(9) 0.0457(10) 0.0529(10) 0.0015(8) 0.0258(8) 0.0113(7)  
 C109 0.0572(12) 0.0757(15) 0.0383(10) -0.0135(10) 0.0033(9) -0.0045(11)  
 C102 0.0655(14) 0.095(2) 0.0557(13) -0.0234(13) 0.0147(11) 0.0027(14)  
 C13 0.0500(10) 0.0611(12) 0.0617(12) -0.0221(10) 0.0325(9) -0.0050(9)  
 C108 0.0804(16) 0.0559(13) 0.0429(11) 0.0042(9) 0.0030(11) -0.0225(12)  
 C101 0.0598(13) 0.0882(18) 0.0439(11) -0.0099(11) 0.0129(10) -0.0107(12)  
 C105 0.0569(16) 0.237(5) 0.0703(19) -0.073(3) 0.0223(14) 0.001(3)  
 C107 0.0656(14) 0.0987(19) 0.0493(12) 0.0070(12) 0.0208(11) -0.0235(14)  
 C110 0.0584(13) 0.0928(18) 0.0458(11) 0.0020(11) 0.0138(10) -0.0272(13)  
 C111 0.0834(17) 0.0590(14) 0.0653(14) 0.0112(11) 0.0140(13) -0.0169(13)  
 C112 0.0702(15) 0.0837(18) 0.0600(13) -0.0001(12) 0.0215(12) 0.0036(13)  
 C104 0.120(3) 0.214(5) 0.0549(16) -0.043(2) 0.0439(19) -0.098(3)  
 C051 0.0456(10) 0.0334(9) 0.0573(11) -0.0102(8) 0.0114(8) 0.0049(7)

\_geom\_special\_details

;

All esds (except the esd in the dihedral angle between two l.s. planes)  
 are estimated using the full covariance matrix. The cell esds are taken  
 into account individually in the estimation of esds in distances, angles  
 and torsion angles; correlations between esds in cell parameters are only  
 used when they are defined by crystal symmetry. An approximate (isotropic)  
 treatment of cell esds is used for estimating esds involving l.s. planes.

;

loop\_

\_geom\_bond\_atom\_site\_label\_1  
\_geom\_bond\_atom\_site\_label\_2  
\_geom\_bond\_distance  
\_geom\_bond\_site\_symmetry\_2  
\_geom\_bond\_publ\_flag  
 Ti1 N3 1.9028(11) 2 ?  
 Ti1 N3 1.9028(11) . ?  
 Ti1 O1 2.1700(10) 2 ?  
 Ti1 O1 2.1700(10) . ?  
 Ti1 N1 2.2007(11) 2 ?  
 Ti1 N1 2.2007(11) . ?  
 Ti1 C1 2.5572(13) 2 ?  
 Ti1 C1 2.5572(13) . ?  
 F3 C18 1.3409(16) . ?  
 F2 C17 1.3413(16) . ?  
 F5 C20 1.3483(16) . ?  
 F1 C16 1.3426(16) . ?  
 F4 C19 1.3491(17) . ?  
 O1 C1 1.2808(15) . ?  
 N1 C1 1.3147(17) . ?  
 N1 C3 1.4427(16) . ?  
 N3 C026 1.4737(18) . ?  
 N3 C025 1.4791(18) . ?  
 C1 C15 1.5105(18) . ?  
 C3 C8 1.4172(19) . ?

C3 C4 1.4191(19) . ?  
C4 C5 1.397(2) . ?  
C4 C9 1.518(2) . ?  
C8 C7 1.402(2) . ?  
C8 C12 1.529(2) . ?  
C15 C20 1.390(2) . ?  
C15 C16 1.3911(18) . ?  
C17 C18 1.378(2) . ?  
C17 C16 1.383(2) . ?  
C18 C19 1.380(2) . ?  
C19 C20 1.384(2) . ?  
C5 C6 1.384(2) . ?  
C103 C102 1.356(4) . ?  
C103 C104 1.373(5) . ?  
C10 C9 1.535(2) . ?  
C9 C11 1.538(2) . ?  
C12 C13 1.539(2) . ?  
C12 C14 1.540(2) . ?  
C025 C029 1.530(2) . ?  
C026 C051 1.527(2) . ?  
C7 C6 1.384(2) . ?  
C106 C101 1.340(3) . ?  
C106 C105 1.374(5) . ?  
C109 C110 1.375(3) . ?  
C109 C108 1.381(3) . ?  
C102 C101 1.340(4) . ?  
C108 C107 1.375(3) . ?  
C105 C104 1.386(6) . ?  
C107 C112 1.366(4) . ?  
C110 C111 1.367(4) . ?  
C111 C112 1.378(3) . ?

loop\_

\_geom\_angle\_atom\_site\_label\_1  
\_geom\_angle\_atom\_site\_label\_2  
\_geom\_angle\_atom\_site\_label\_3  
\_geom\_angle  
\_geom\_angle\_site\_symmetry\_1  
\_geom\_angle\_site\_symmetry\_3  
\_geom\_angle\_publ\_flag  
N3 Ti1 N3 103.65(7) 2 . ?  
N3 Ti1 O1 90.48(4) 2 2 ?  
N3 Ti1 O1 159.23(4) . 2 ?  
N3 Ti1 O1 159.23(4) 2 . ?  
N3 Ti1 O1 90.48(4) . . ?  
O1 Ti1 O1 80.53(5) 2 . ?  
N3 Ti1 N1 104.82(4) 2 2 ?  
N3 Ti1 N1 100.16(4) . 2 ?  
O1 Ti1 N1 60.98(4) 2 2 ?  
O1 Ti1 N1 87.22(4) . 2 ?  
N3 Ti1 N1 100.16(4) 2 . ?  
N3 Ti1 N1 104.82(4) . . ?  
O1 Ti1 N1 87.22(4) 2 . ?  
O1 Ti1 N1 60.98(4) . . ?  
N1 Ti1 N1 139.06(6) 2 . ?  
N3 Ti1 C1 98.59(4) 2 2 ?  
N3 Ti1 C1 130.62(4) . 2 ?



O1 Ti1 C1 30.04(4) 2 2 ?  
O1 Ti1 C1 82.96(4) . 2 ?  
N1 Ti1 C1 30.94(4) 2 2 ?  
N1 Ti1 C1 113.88(4) . 2 ?  
N3 Ti1 C1 130.62(4) 2 . ?  
N3 Ti1 C1 98.59(4) . . ?  
O1 Ti1 C1 82.96(4) 2 . ?  
O1 Ti1 C1 30.04(4) . . ?  
N1 Ti1 C1 113.88(4) 2 . ?  
N1 Ti1 C1 30.94(4) . . ?  
C1 Ti1 C1 99.29(6) 2 . ?  
C1 O1 Ti1 91.96(8) . . ?  
C1 N1 C3 123.08(11) . . ?  
C1 N1 Ti1 89.68(8) . . ?  
C3 N1 Ti1 145.94(8) . . ?  
C026 N3 C025 113.46(11) . . ?  
C026 N3 Ti1 126.70(9) . . ?  
C025 N3 Ti1 119.22(9) . . ?  
O1 C1 N1 117.38(12) . . ?  
O1 C1 C15 116.36(11) . . ?  
N1 C1 C15 126.18(12) . . ?  
O1 C1 Ti1 58.00(6) . . ?  
N1 C1 Ti1 59.38(7) . . ?  
C15 C1 Ti1 173.64(9) . . ?  
C8 C3 C4 120.54(12) . . ?  
C8 C3 N1 119.93(12) . . ?  
C4 C3 N1 119.43(12) . . ?  
C5 C4 C3 118.30(13) . . ?  
C5 C4 C9 118.87(13) . . ?  
C3 C4 C9 122.73(12) . . ?  
C7 C8 C3 118.24(13) . . ?  
C7 C8 C12 117.42(13) . . ?  
C3 C8 C12 124.34(12) . . ?  
C20 C15 C16 116.47(12) . . ?  
C20 C15 C1 121.26(12) . . ?  
C16 C15 C1 121.63(12) . . ?  
F2 C17 C18 120.09(13) . . ?  
F2 C17 C16 120.45(14) . . ?  
C18 C17 C16 119.46(13) . . ?  
F3 C18 C17 120.38(13) . . ?  
F3 C18 C19 119.99(14) . . ?  
C17 C18 C19 119.63(13) . . ?  
F1 C16 C17 117.89(12) . . ?  
F1 C16 C15 119.55(12) . . ?  
C17 C16 C15 122.51(13) . . ?  
F4 C19 C18 119.31(13) . . ?  
F4 C19 C20 120.60(13) . . ?  
C18 C19 C20 120.09(14) . . ?  
F5 C20 C19 118.38(13) . . ?  
F5 C20 C15 119.79(12) . . ?  
C19 C20 C15 121.83(13) . . ?  
C6 C5 C4 121.71(14) . . ?  
C102 C103 C104 119.4(3) . . ?  
C4 C9 C10 108.83(12) . . ?  
C4 C9 C11 113.68(13) . . ?  
C10 C9 C11 109.68(13) . . ?  
C8 C12 C13 110.89(14) . . ?

C8 C12 C14 111.53(12) . . ?  
C13 C12 C14 109.21(13) . . ?  
N3 C025 C029 113.54(13) . . ?  
N3 C026 C051 115.26(12) . . ?  
C6 C7 C8 121.57(14) . . ?  
C7 C6 C5 119.60(14) . . ?  
C101 C106 C105 120.2(3) . . ?  
C110 C109 C108 119.7(2) . . ?  
C101 C102 C103 121.3(3) . . ?  
C107 C108 C109 120.1(2) . . ?  
C102 C101 C106 120.7(3) . . ?  
C106 C105 C104 119.3(3) . . ?  
C112 C107 C108 120.2(2) . . ?  
C111 C110 C109 119.8(2) . . ?  
C110 C111 C112 120.7(2) . . ?  
C107 C112 C111 119.6(2) . . ?  
C103 C104 C105 119.2(3) . . ?

loop\_

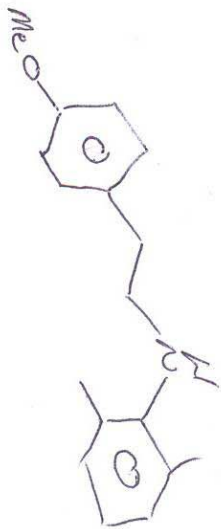
\_geom\_torsion\_atom\_site\_label\_1  
\_geom\_torsion\_atom\_site\_label\_2  
\_geom\_torsion\_atom\_site\_label\_3  
\_geom\_torsion\_atom\_site\_label\_4  
\_geom\_torsion  
\_geom\_torsion\_site\_symmetry\_1  
\_geom\_torsion\_site\_symmetry\_2  
\_geom\_torsion\_site\_symmetry\_3  
\_geom\_torsion\_site\_symmetry\_4  
\_geom\_torsion\_publ\_flag  
N3 Ti1 O1 C1 -26.90(16) 2 . . . ?  
N3 Ti1 O1 C1 106.50(8) . . . . ?  
O1 Ti1 O1 C1 -92.31(8) 2 . . . ?  
N1 Ti1 O1 C1 -153.35(8) 2 . . . ?  
N1 Ti1 O1 C1 -0.24(7) . . . . ?  
C1 Ti1 O1 C1 -122.58(8) 2 . . . ?  
N3 Ti1 N1 C1 170.92(8) 2 . . . ?  
N3 Ti1 N1 C1 -81.90(8) . . . . ?  
O1 Ti1 N1 C1 80.94(8) 2 . . . ?  
O1 Ti1 N1 C1 0.23(7) . . . . ?  
N1 Ti1 N1 C1 43.81(7) 2 . . . ?  
C1 Ti1 N1 C1 66.72(10) 2 . . . ?  
N3 Ti1 N1 C3 5.84(16) 2 . . . ?  
N3 Ti1 N1 C3 113.02(15) . . . . ?  
O1 Ti1 N1 C3 -84.15(15) 2 . . . ?  
O1 Ti1 N1 C3 -164.86(17) . . . . ?  
N1 Ti1 N1 C3 -121.27(16) 2 . . . ?  
C1 Ti1 N1 C3 -98.36(16) 2 . . . ?  
C1 Ti1 N1 C3 -165.1(2) . . . . ?  
N3 Ti1 N3 C026 34.27(10) 2 . . . ?  
O1 Ti1 N3 C026 165.89(11) 2 . . . ?  
O1 Ti1 N3 C026 -130.35(11) . . . . ?  
N1 Ti1 N3 C026 142.39(11) 2 . . . ?  
N1 Ti1 N3 C026 -70.33(12) . . . . ?  
C1 Ti1 N3 C026 148.53(10) 2 . . . ?  
C1 Ti1 N3 C026 -101.31(11) . . . . ?  
N3 Ti1 N3 C025 -155.42(12) 2 . . . ?  
O1 Ti1 N3 C025 -23.81(19) 2 . . . ?

O1 Ti1 N3 C025 39.96(10) . . . . ?  
N1 Ti1 N3 C025 -47.30(10) 2 . . . . ?  
N1 Ti1 N3 C025 99.98(10) . . . . ?  
C1 Ti1 N3 C025 -41.17(12) 2 . . . . ?  
C1 Ti1 N3 C025 68.99(10) . . . . ?  
Ti1 O1 C1 N1 0.39(12) . . . . ?  
Ti1 O1 C1 C15 -176.61(10) . . . . ?  
C3 N1 C1 O1 169.71(11) . . . . ?  
Ti1 N1 C1 O1 -0.38(12) . . . . ?  
C3 N1 C1 C15 -13.6(2) . . . . ?  
Ti1 N1 C1 C15 176.29(12) . . . . ?  
C3 N1 C1 Ti1 170.09(13) . . . . ?  
N3 Ti1 C1 O1 167.79(7) 2 . . . . ?  
N3 Ti1 C1 O1 -75.85(8) . . . . ?  
O1 Ti1 C1 O1 83.24(8) 2 . . . . ?  
N1 Ti1 C1 O1 29.34(8) 2 . . . . ?  
N1 Ti1 C1 O1 179.60(12) . . . . ?  
C1 Ti1 C1 O1 57.93(6) 2 . . . . ?  
N3 Ti1 C1 N1 -11.81(10) 2 . . . . ?  
N3 Ti1 C1 N1 104.55(8) . . . . ?  
O1 Ti1 C1 N1 -96.36(8) 2 . . . . ?  
O1 Ti1 C1 N1 -179.60(12) . . . . ?  
N1 Ti1 C1 N1 -150.26(6) 2 . . . . ?  
C1 Ti1 C1 N1 -121.67(8) 2 . . . . ?  
N3 Ti1 C1 C15 -163.7(8) 2 . . . . ?  
N3 Ti1 C1 C15 -47.3(8) . . . . ?  
O1 Ti1 C1 C15 111.8(8) 2 . . . . ?  
Ti1 C1 C15 28.5(8) . . . . ?  
N1 Ti1 C1 C15 57.9(8) 2 . . . . ?  
N1 Ti1 C1 C15 -151.9(9) . . . . ?  
C1 Ti1 C1 C15 86.5(8) 2 . . . . ?  
C1 N1 C3 C8 -68.78(17) . . . . ?  
Ti1 N1 C3 C8 93.33(18) . . . . ?  
C1 N1 C3 C4 114.67(14) . . . . ?  
Ti1 N1 C3 C4 -83.21(18) . . . . ?  
C8 C3 C4 C5 2.5(2) . . . . ?  
N1 C3 C4 C5 178.98(12) . . . . ?  
C8 C3 C4 C9 -173.80(12) . . . . ?  
N1 C3 C4 C9 2.73(19) . . . . ?  
C4 C3 C8 C7 -1.4(2) . . . . ?  
N1 C3 C8 C7 -177.96(12) . . . . ?  
C4 C3 C8 C12 177.53(13) . . . . ?  
N1 C3 C8 C12 1.0(2) . . . . ?  
O1 C1 C15 C20 -55.48(17) . . . . ?  
N1 C1 C15 C20 127.82(15) . . . . ?  
Ti1 C1 C15 C20 -82.4(8) . . . . ?  
O1 C1 C15 C16 115.06(14) . . . . ?  
N1 C1 C15 C16 -61.64(19) . . . . ?  
Ti1 C1 C15 C16 88.2(8) . . . . ?  
F2 C17 C18 F3 0.9(2) . . . . ?  
C16 C17 C18 F3 -179.88(13) . . . . ?  
F2 C17 C18 C19 -179.37(13) . . . . ?  
C16 C17 C18 C19 -0.1(2) . . . . ?  
F2 C17 C16 F1 1.8(2) . . . . ?  
C18 C17 C16 F1 -177.48(13) . . . . ?  
F2 C17 C16 C15 178.97(12) . . . . ?  
C18 C17 C16 C15 -0.3(2) . . . . ?

C20 C15 C16 F1 177.04(12) . . . . ?  
 C1 C15 C16 F1 6.08(19) . . . . ?  
 C20 C15 C16 C17 -0.1(2) . . . . ?  
 C1 C15 C16 C17 -171.08(13) . . . . ?  
 F3 C18 C19 F4 0.2(2) . . . . ?  
 C17 C18 C19 F4 -179.56(13) . . . . ?  
 F3 C18 C19 C20 -179.33(13) . . . . ?  
 C17 C18 C19 C20 0.9(2) . . . . ?  
 F4 C19 C20 F5 -0.5(2) . . . . ?  
 C18 C19 C20 F5 179.00(13) . . . . ?  
 F4 C19 C20 C15 179.13(13) . . . . ?  
 C18 C19 C20 C15 -1.4(2) . . . . ?  
 C16 C15 C20 F5 -179.42(12) . . . . ?  
 C1 C15 C20 F5 -8.4(2) . . . . ?  
 C16 C15 C20 C19 0.9(2) . . . . ?  
 C1 C15 C20 C19 171.94(13) . . . . ?  
 C3 C4 C5 C6 -1.7(2) . . . . ?  
 C9 C4 C5 C6 174.73(14) . . . . ?  
 C5 C4 C9 C10 -73.15(16) . . . . ?  
 C3 C4 C9 C10 103.08(15) . . . . ?  
 C5 C4 C9 C11 49.40(18) . . . . ?  
 C3 C4 C9 C11 -134.37(14) . . . . ?  
 C7 C8 C12 C13 63.89(18) . . . . ?  
 C3 C8 C12 C13 -115.09(16) . . . . ?  
 C7 C8 C12 C14 -58.06(18) . . . . ?  
 C3 C8 C12 C14 122.95(15) . . . . ?  
 C026 N3 C025 C029 62.62(17) . . . . ?  
 Ti1 N3 C025 C029 -108.92(13) . . . . ?  
 C025 N3 C026 C051 56.79(18) . . . . ?  
 Ti1 N3 C026 C051 -132.43(13) . . . . ?  
 C3 C8 C7 C6 -0.4(2) . . . . ?  
 C12 C8 C7 C6 -179.45(15) . . . . ?  
 C8 C7 C6 C5 1.2(3) . . . . ?  
 C4 C5 C6 C7 -0.1(3) . . . . ?  
 C104 C103 C102 C101 -0.7(4) . . . . ?  
 C110 C109 C108 C107 0.2(3) . . . . ?  
 C103 C102 C101 C106 0.5(3) . . . . ?  
 C105 C106 C101 C102 -0.3(3) . . . . ?  
 C101 C106 C105 C104 0.3(4) . . . . ?  
 C109 C108 C107 C112 -0.6(3) . . . . ?  
 C108 C109 C110 C111 0.2(3) . . . . ?  
 C109 C110 C111 C112 -0.3(3) . . . . ?  
 C108 C107 C112 C111 0.6(3) . . . . ?  
 C110 C111 C112 C107 -0.1(4) . . . . ?  
 C102 C103 C104 C105 0.7(4) . . . . ?  
 C106 C105 C104 C103 -0.5(5) . . . . ?

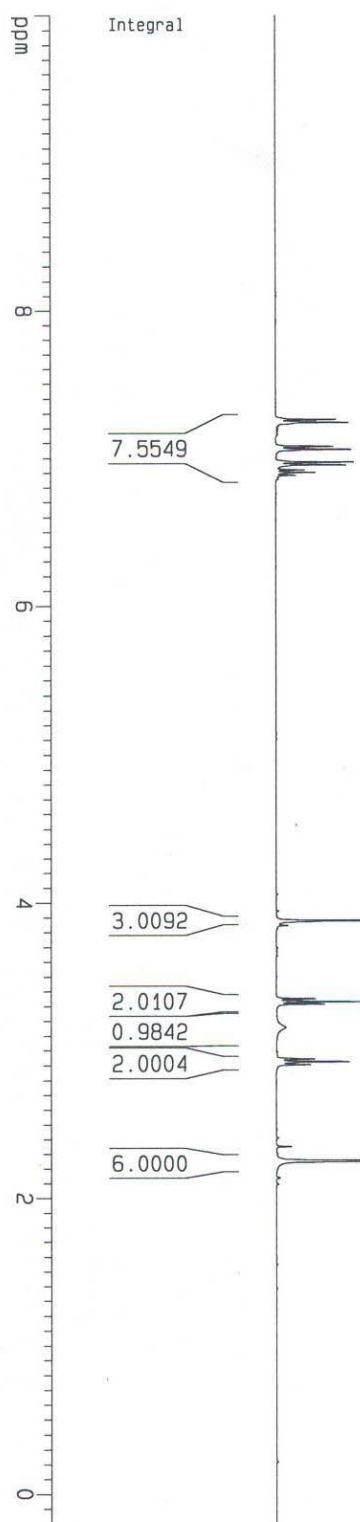
<u>_diffn_measured_fraction_theta_max</u>	0.978
<u>_diffn_reflns_theta_full</u>	28.02
<u>_diffn_measured_fraction_theta_full</u>	0.978
<u>_refine_diff_density_max</u>	0.294
<u>_refine_diff_density_min</u>	-0.273
<u>_refine_diff_density_rms</u>	0.041

JOB NO: III-39-JB (C) CDC13  
 1H spectrum ref. to CDC13 at 7.27 ppm



ppm

- 7.25931
- 7.23787
- 7.23079
- 7.07403
- 7.05531
- 6.98000
- 6.97275
- 6.96827
- 6.95129
- 6.91908
- 6.90054
- 6.88174
  
- 3.87892
- 3.84500
- 3.34964
- 3.33214
- 3.31492
- 3.15850
- 2.94126
- 2.92394
- 2.90663
- 2.35092
- 2.25388



7.5549

3.0092

2.0107

0.9842

2.0004

6.0000

Current Data Parameters  
 NAME JAB126  
 EXPNO 1  
 PROCNO 1

F2 - Acquisition Parameter  
 Date\_ 20060623  
 Time 8.08

INSTNUM av400  
 PROBHD 5 mm BBI 1H-BB  
 PULPROG zg30  
 TD 16384  
 SOLVENT CDC13  
 NS 29  
 DS 2  
 SWH 4990.020 HZ  
 FIDRES 0.304567 HZ  
 AQ 1.6417269 se  
 RG 80.6  
 DW 100.200 us  
 DE 6.00 us  
 TE 300.0 K  
 D1 1.00000000 se

==== CHANNEL f1 =====

NUC1 1H  
 P1 5.30 us  
 PL1 4.00 dB  
 SF01 400.1324008 MH

F2 - Processing parameters  
 SI 32768  
 SF 400.1300051 MH  
 WDW EM  
 SSB 0  
 LB 0.10 HZ  
 GB 0  
 PC 0.50

1D NMR plot parameters

CX 20.00 cm  
 CY 6.00 cm  
 F1P 10.000 pp  
 F1 4001.30 HZ  
 F2P -0.200 pp  
 F2 -80.03 HZ  
 PPMCM 0.51000 pp  
 HZCM 204.06630 HZ

III-39-JB (C) CDC13 13C BB EXP1 ref. to CDC13 at 77.23 ppm

Current Data Parameters  
 NAME JB406  
 EXPNO 1  
 PROCNO 1

F2 - Acquisition Parameters  
 Date\_ 20060623  
 Time 8:21

INSTRUM av300  
 PROBHD 5 mm GNP 1H/13  
 PULPROG zgpg30  
 TD 65536  
 SOLVENT CDC13  
 NS 24  
 DS 4

SWH 18932.393 Hz  
 FIDRES 0.287360 Hz  
 AQ 1.7400308 sec  
 RG 16384  
 DW 26.550 usec  
 DE 37.93 usec  
 TE 300.0 K

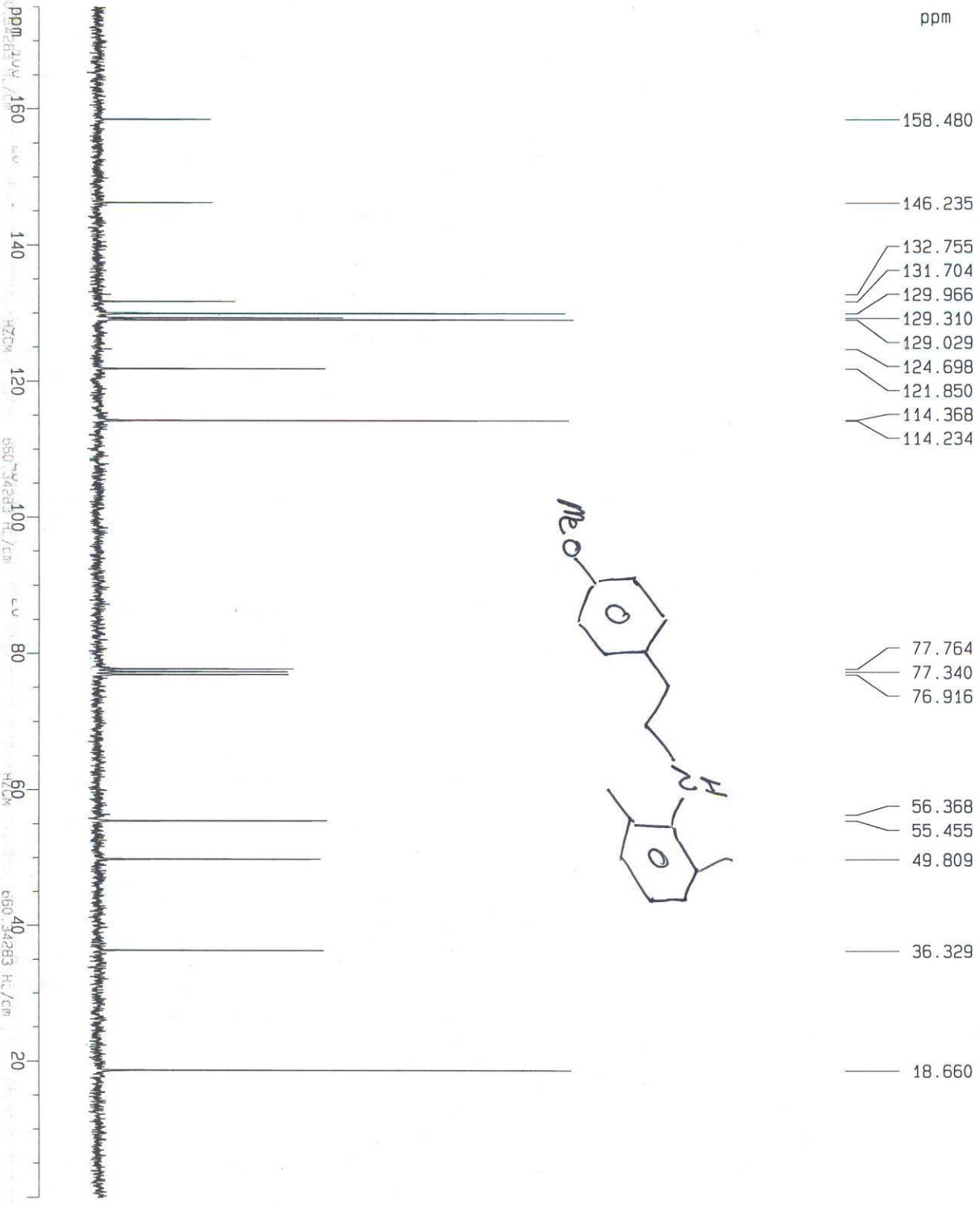
D1 2.00000000 sec  
 d11 0.03000000 sec  
 d12 0.00002000 sec

==== CHANNEL f1 =====  
 NUC1 13C  
 P1 11.00 usec  
 PL1 0.00 dB  
 SF01 75.4755190 MHz

==== CHANNEL f2 =====  
 CPDPRG2 waltz16  
 NUC2 1H  
 PCPD2 80.00 usec  
 PL2 0.00 dB  
 PL12 15.97 dB  
 PL13 19.00 dB  
 SF02 300.1316000 MHz

F2 - Processing parameters  
 SI 32768  
 SF 75.467395 MHz  
 MDW EM  
 SSB 0  
 LB 2.00 Hz  
 GB 0  
 PC 1.00

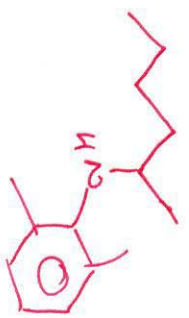
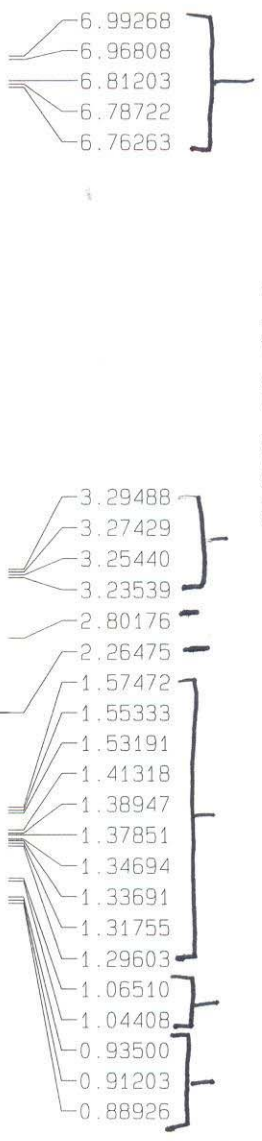
1D NMR plot parameters  
 CX 20.00 cm  
 CY 8.00 cm  
 F1P 175.000 ppm  
 F1 13206.86 Hz  
 F2P 0.000 ppm  
 F2 0.00 Hz  
 PPMCM 8.75000 ppm/cm  
 HZCM 650.34283 Hz/cm



I-75-JB CDC13

Current Data Parameters  
 NAME JB87  
 EXPNO 1  
 PROCNO 1

F2 - Acquisition Parameters  
 Date\_ 20040715  
 Time 14.26



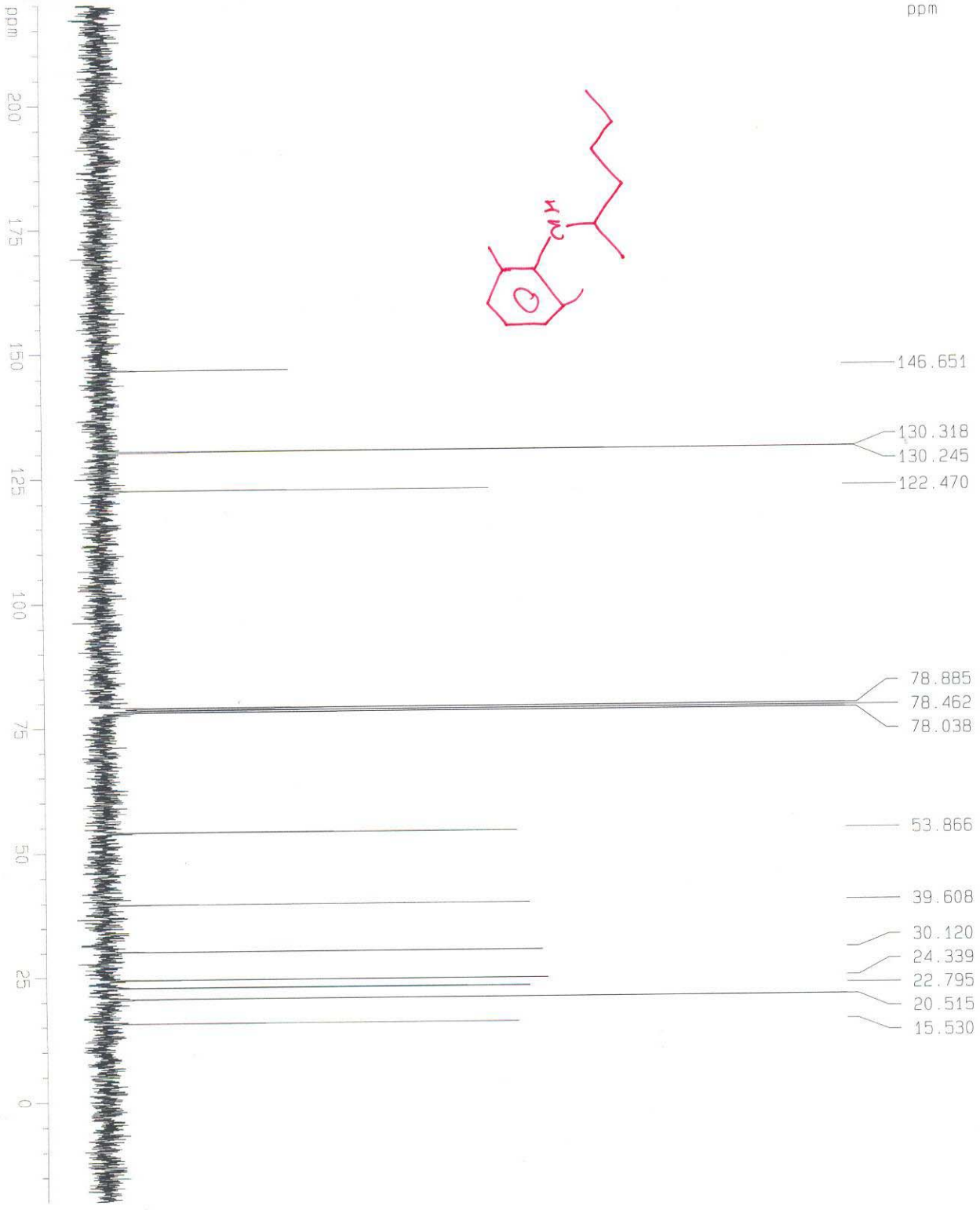
Integral  
 3.000

1.044  
 1.001  
 6.438  
 1.074  
 5.598  
 3.186  
 3.263

===== CHANNEL f1 =====  
 NUC1 1H  
 P1 9.00 usec  
 PL1 0.00 dB  
 SF01 300.1316000 MHz  
 F2 - Processing parameters  
 SI 32768  
 SF 300.1300112 MHz  
 WDW EM  
 SSB 0  
 LB 0.10 HZ  
 GB 0  
 PC 1.00

1D NMR plot parameters  
 CX 20.00 cm  
 F1P 10.000 ppm  
 F1 3001.30 HZ  
 F2P -1.000 ppm  
 F2 -300.13 HZ  
 PPMCM 0.55000 ppm/cm  
 HZCM 165.07150 HZ/cm

13C BB EXPT I-75-JB CDC13



Current Data Parameters  
 NAME JBB88.  
 EXPNO 1  
 PROCNO 1

F2 - Acquisition Parameters  
 Date\_ 20040715  
 Time 14.31  
 INSTRUM av300  
 PROBD 5 mm QNP 1H/  
 PULPROG zgpg30  
 TD 65536  
 SOLVENT CDC13  
 NS 62  
 DS 4  
 SWH 18832.393 Hz  
 FIDRES 0.287360 Hz  
 A0 1.7400308 sec  
 RG 18390.4  
 DM 26.550 usec  
 DE 37.93 usec  
 TE 300.0 K  
 D1 2.00000000 sec  
 d11 0.03000000 sec  
 d12 0.00002000 sec

CHANNEL f1 =====  
 NUC1 13C  
 p1 6.00 usec  
 PL1 0.00 dB  
 SF01 75.4755190 MHz

CHANNEL f2 =====  
 CPDPRG2 waltz16  
 NUC2 1H  
 PPGPD2 75.00 usec  
 PL2 120.00 dB  
 PL12 18.00 dB  
 PL13 18.00 dB  
 SF02 300.1316000 MHz

F2 - Processing parameters  
 SI 32768  
 SF 75.4676423 MHz  
 WDW EM  
 SSB 0  
 LB 2.00 Hz  
 GB 0  
 PC 1.00

1D NMR plot parameters  
 CX 20.00 cm  
 F1P 220.000 ppm  
 F1 16502.88 Hz  
 F2P -20.000 ppm  
 F2 -1509.35 Hz  
 PPMCM 12.00000 ppm/cm  
 HZCM 905.61176 Hz/cm