

# Probing the Bioactive Constituents from Chemotypes of the Sponge *Psammocinia* aff. *bulbosa*

Sarah J. Robinson,<sup>†</sup> Karen Tenney,<sup>†</sup> Desiree F. Yee,<sup>†</sup> Lizabeth Martinez,<sup>†</sup>  
Joseph E. Media,<sup>‡</sup> Frederick A. Valeriote,<sup>‡</sup> Rob W. M. van Soest,<sup>§</sup> Phillip Crews<sup>\*†</sup>

*Department of Chemistry and Biochemistry and Institute for Marine Sciences, University of California Santa Cruz, Santa Cruz, California 95064, Josephine Ford Cancer Center, Henry Ford Health System, Detroit, Michigan 48202, and Zoölogisch Museum, University of Amsterdam, P.O. Box 94766, 1090 MT, Amsterdam, The Netherlands*

## Index:

**Chart S1:** Important background structures.

**Figure S1:** Isolation scheme for compounds psymbamide A (**4**) and preswinholide A (**5**).

**Figure S2:** ESIMS of **4**.

**Figure S3:** ESIMS of **5**.

**Figure S4:** <sup>1</sup>H NMR spectrum of **4** in DMSO-*d*<sub>6</sub> at 500 MHz.

**Figure S5:** <sup>13</sup>C NMR spectrum of **4** in DMSO-*d*<sub>6</sub> at 500 MHz.

**Figure S6:** gCOSY spectrum of **4** in DMSO-*d*<sub>6</sub> at 500 MHz.

**Figure S7:** HMQC spectrum of **4** in DMSO-*d*<sub>6</sub> at 600 MHz.

**Figure S8:** gHMBC spectrum of **4** in DMSO-*d*<sub>6</sub> at 600 MHz.

**Figure S9:** 5 Hz optimized gHMBC spectrum of **4** in CD<sub>3</sub>CN at 600 MHz.

**Figure S10:** <sup>13</sup>C and <sup>1</sup>H shift reference data of Br substituted Trp.

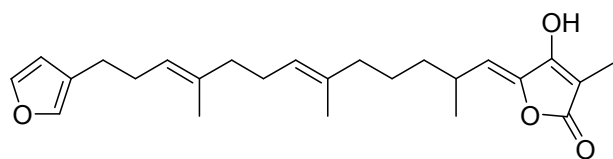
**Figure S11:** Marinlit hits from search of C<sub>46</sub>N<sub>7-11</sub>O<sub>7-11</sub>

<sup>†</sup>University of California, Santa Cruz.

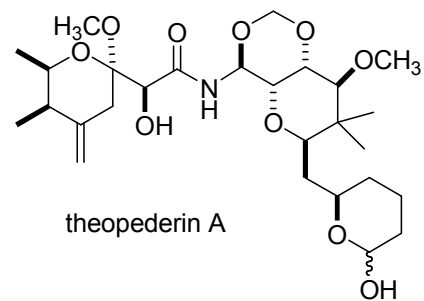
<sup>‡</sup>Josephine Ford Cancer Center.

<sup>§</sup>University of Amsterdam.

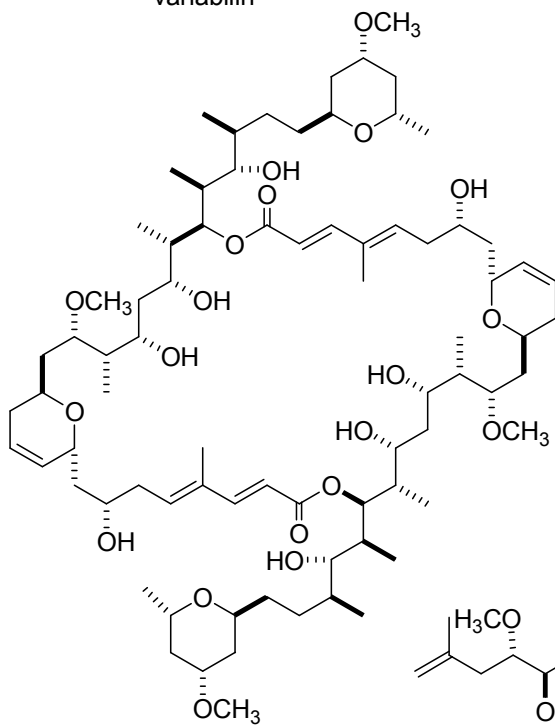
\*To whom correspondence should be addressed: Phone: 831-459-2603 Fax 831-459-2935 Email: phil@chemistry.ucsc.edu.



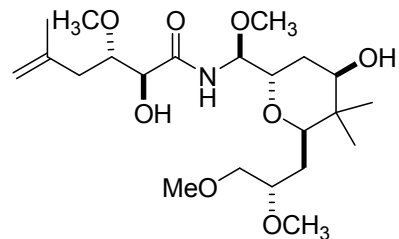
variabilin



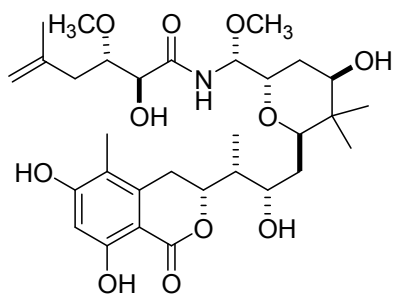
theopederin A



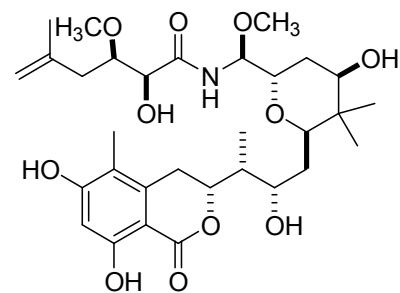
swinholide A



psympederin

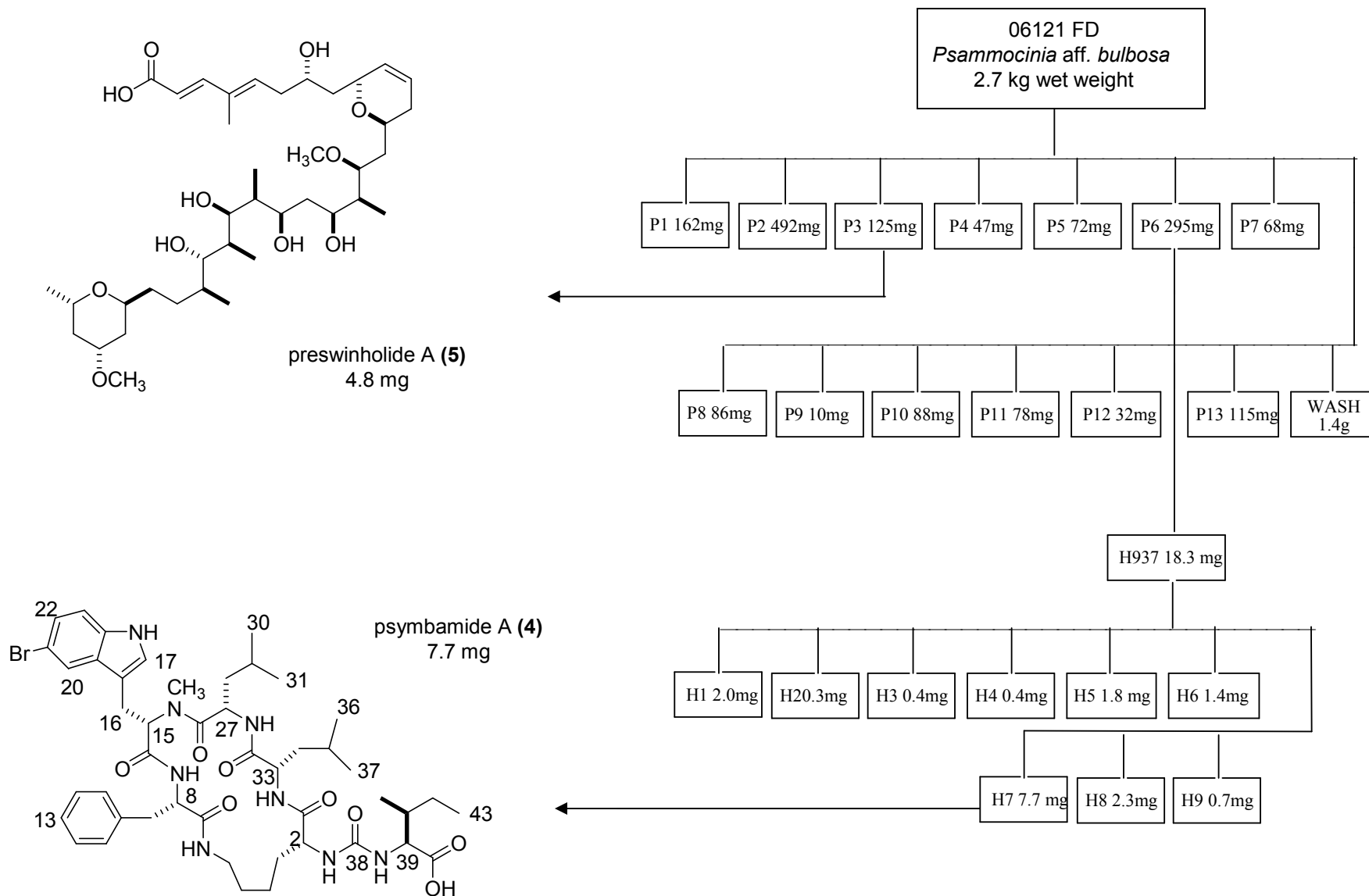


psymberin  
diastereomer



psymberin  
diastereomer

Chart S1: Structures of background compounds.



**Figure S1:** Isolation scheme of psymbamide A (4) and preswinholide A (5).

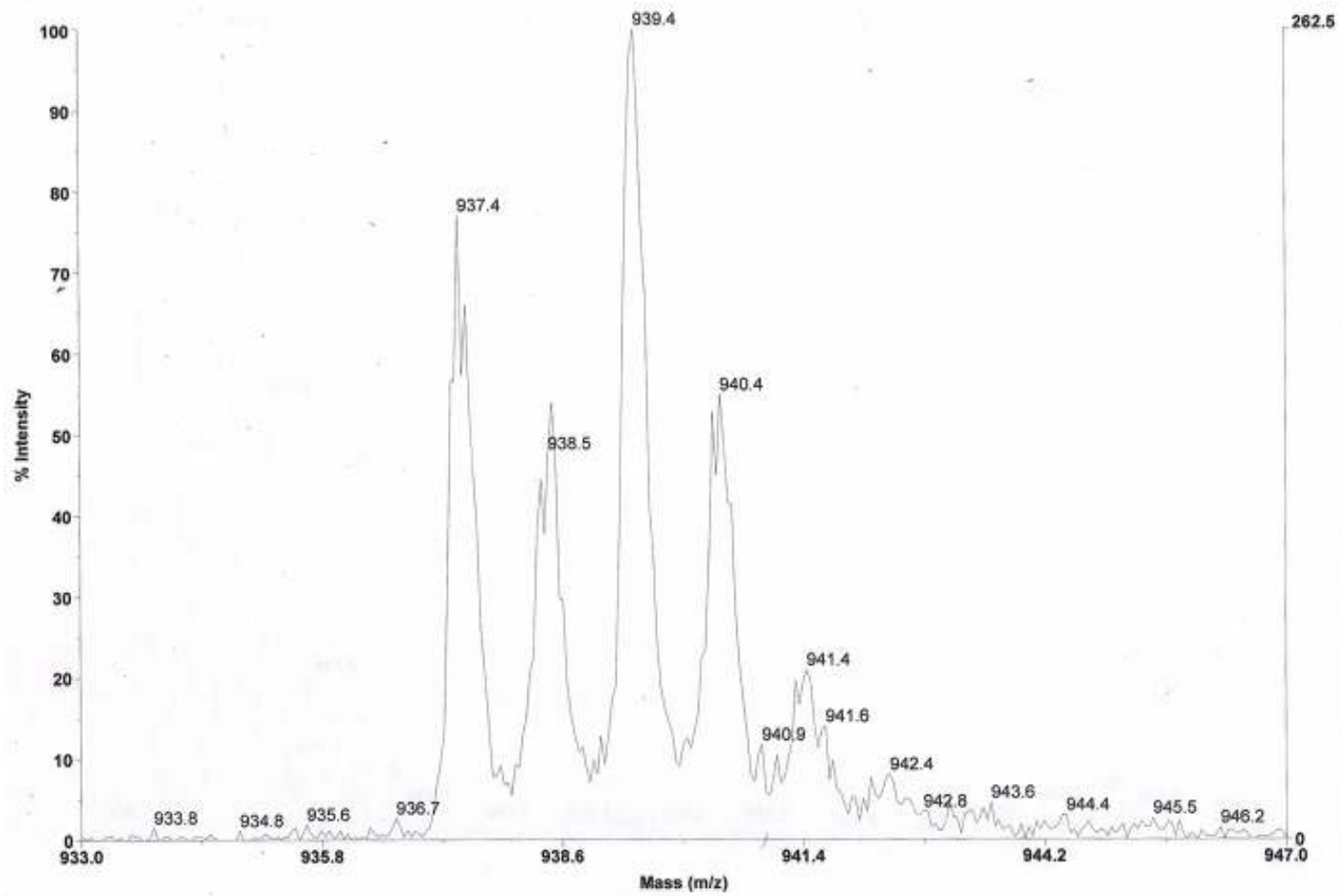


Figure S2: ESIMS of psymbamide A (4).

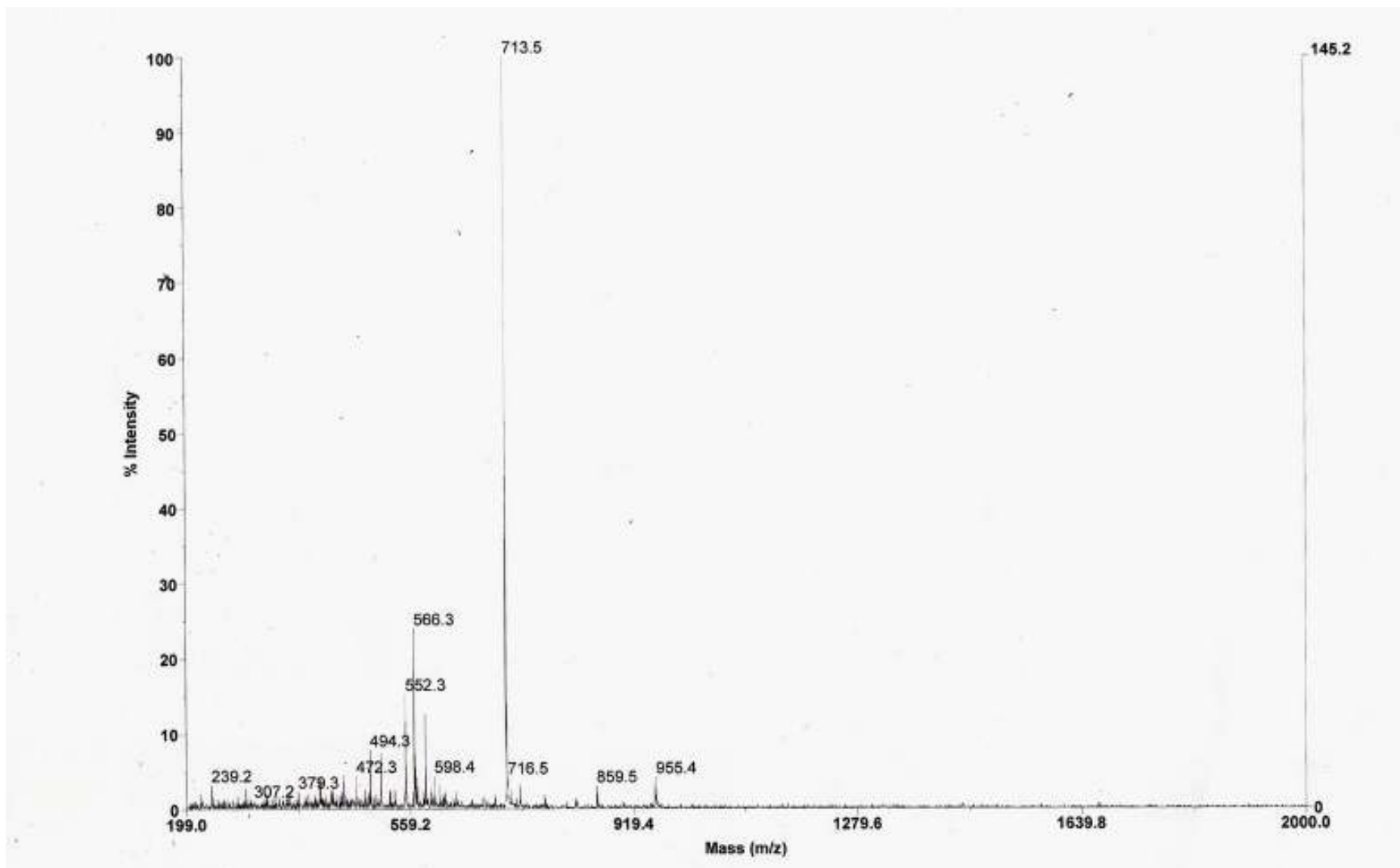
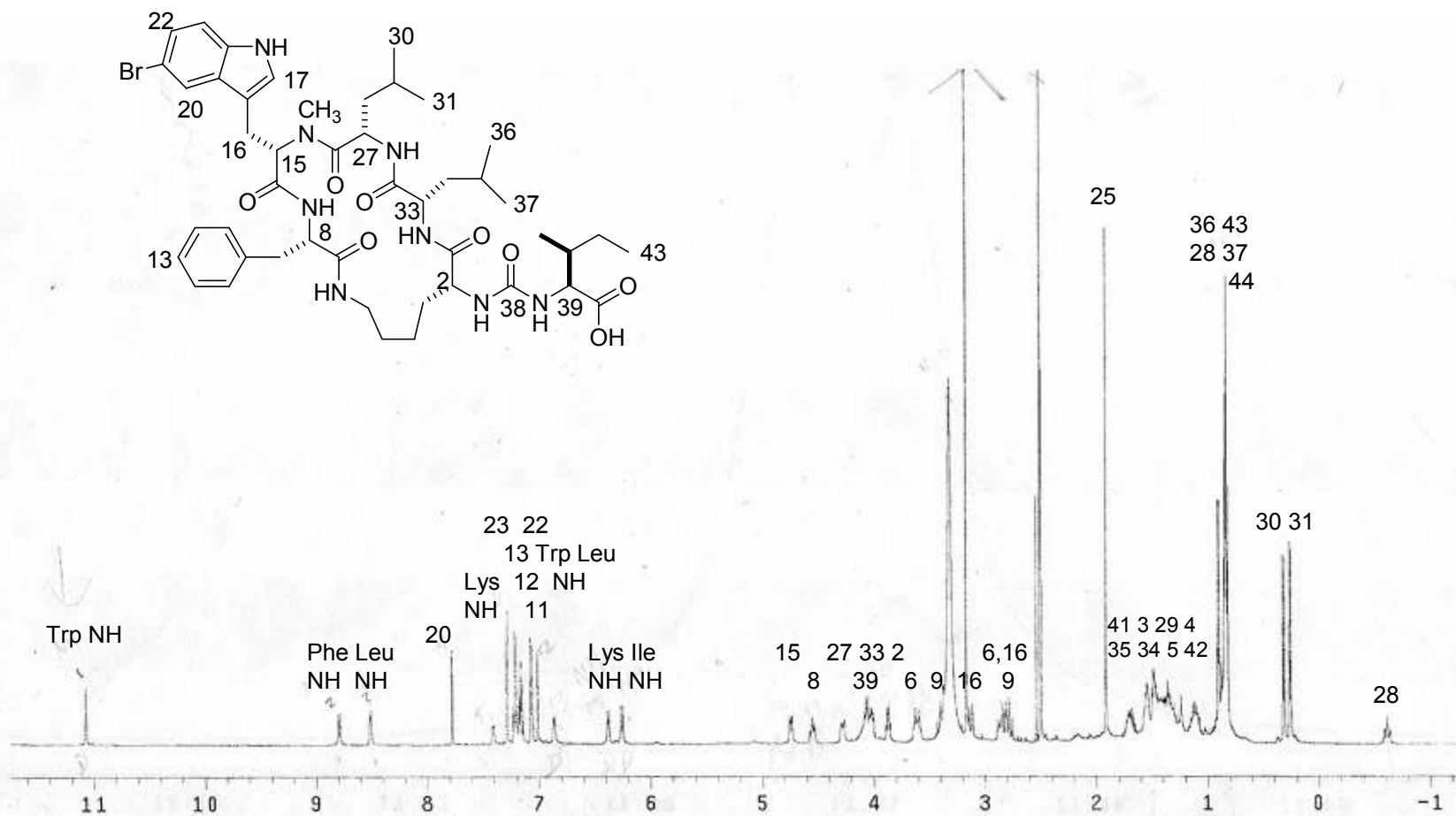
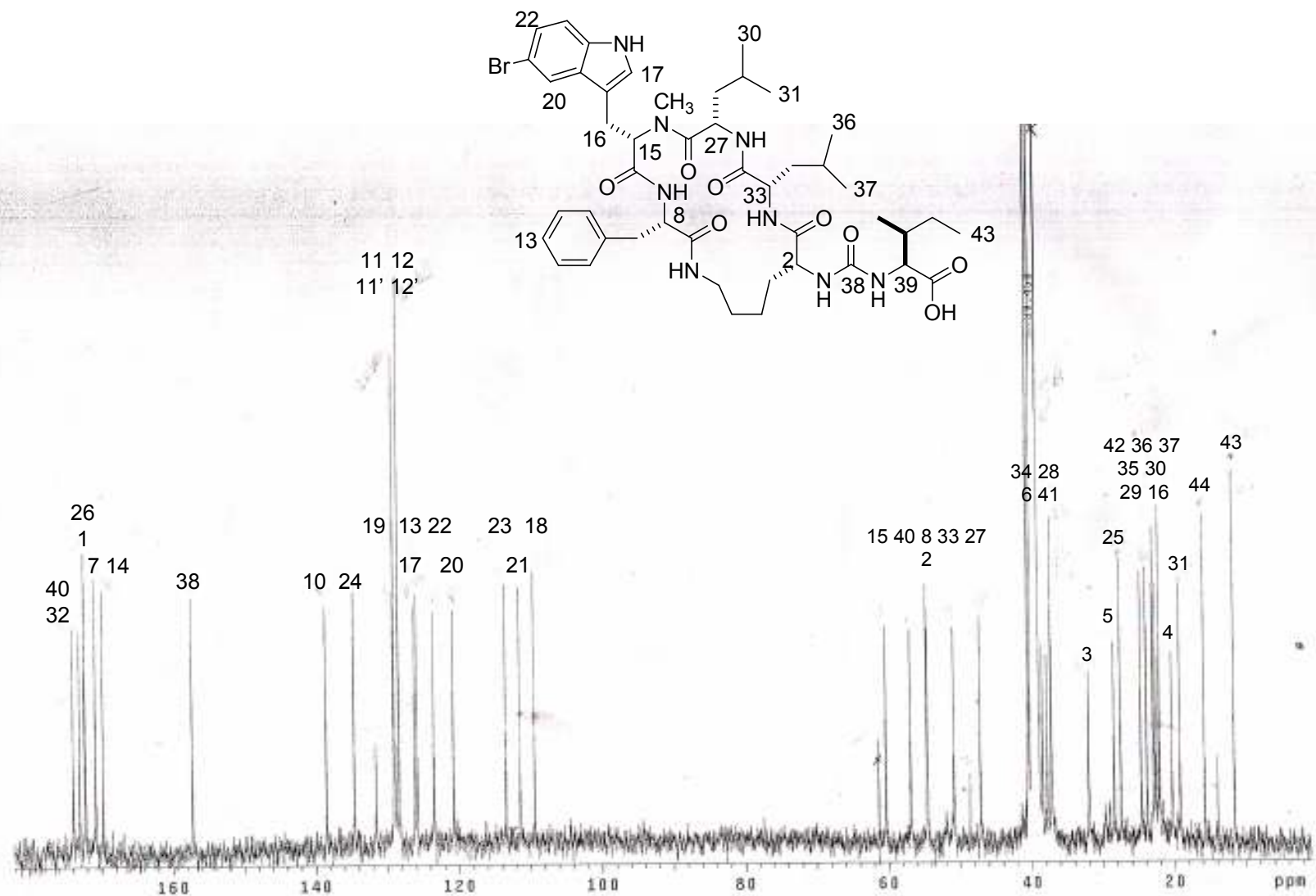


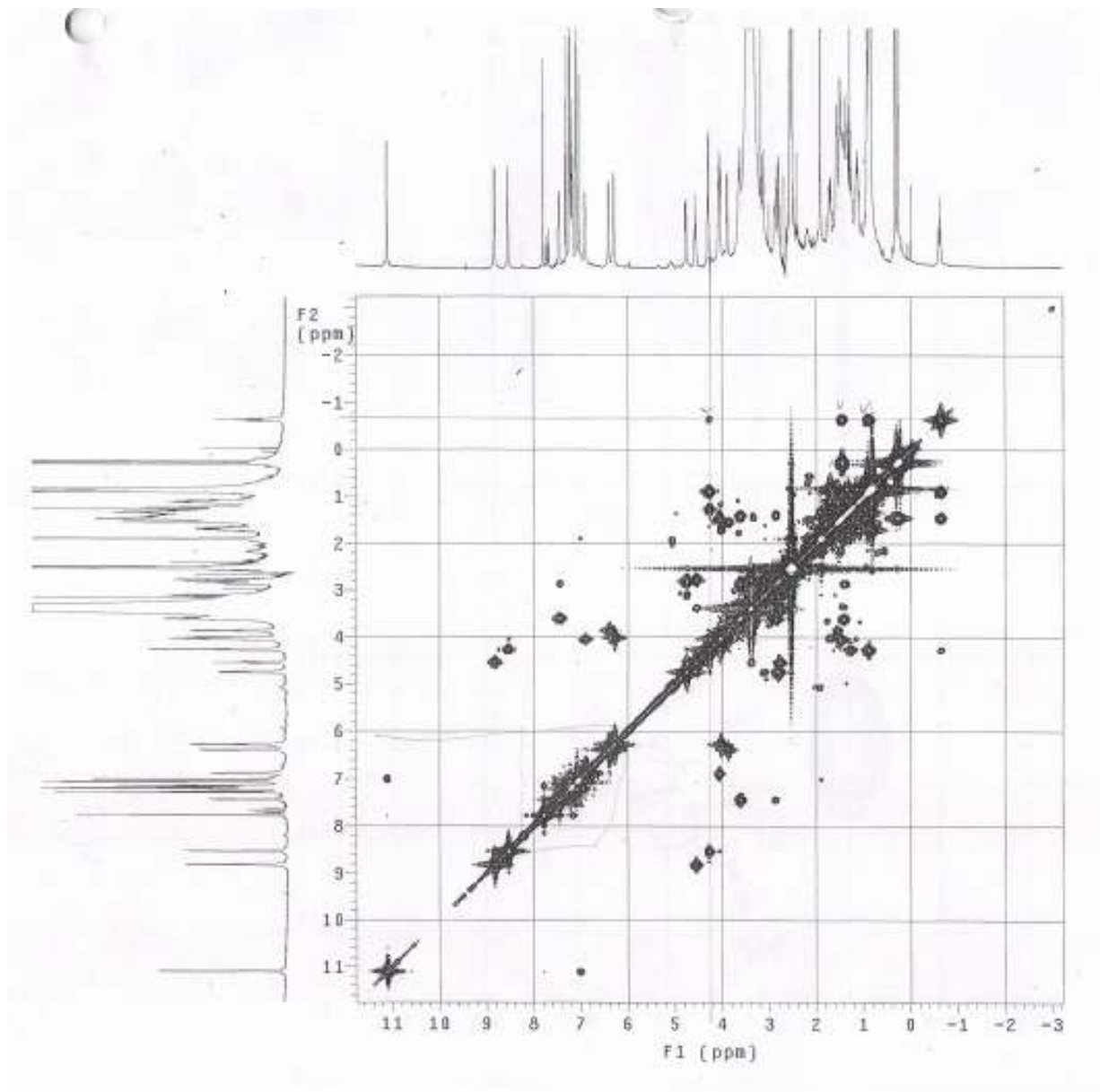
Figure S3: ESIMS of preswinholide A (5).



**Figure S4:** <sup>1</sup>H NMR spectrum of psymbamide A (**4**) in DMSO-*d*<sub>6</sub> at 500 MHz.

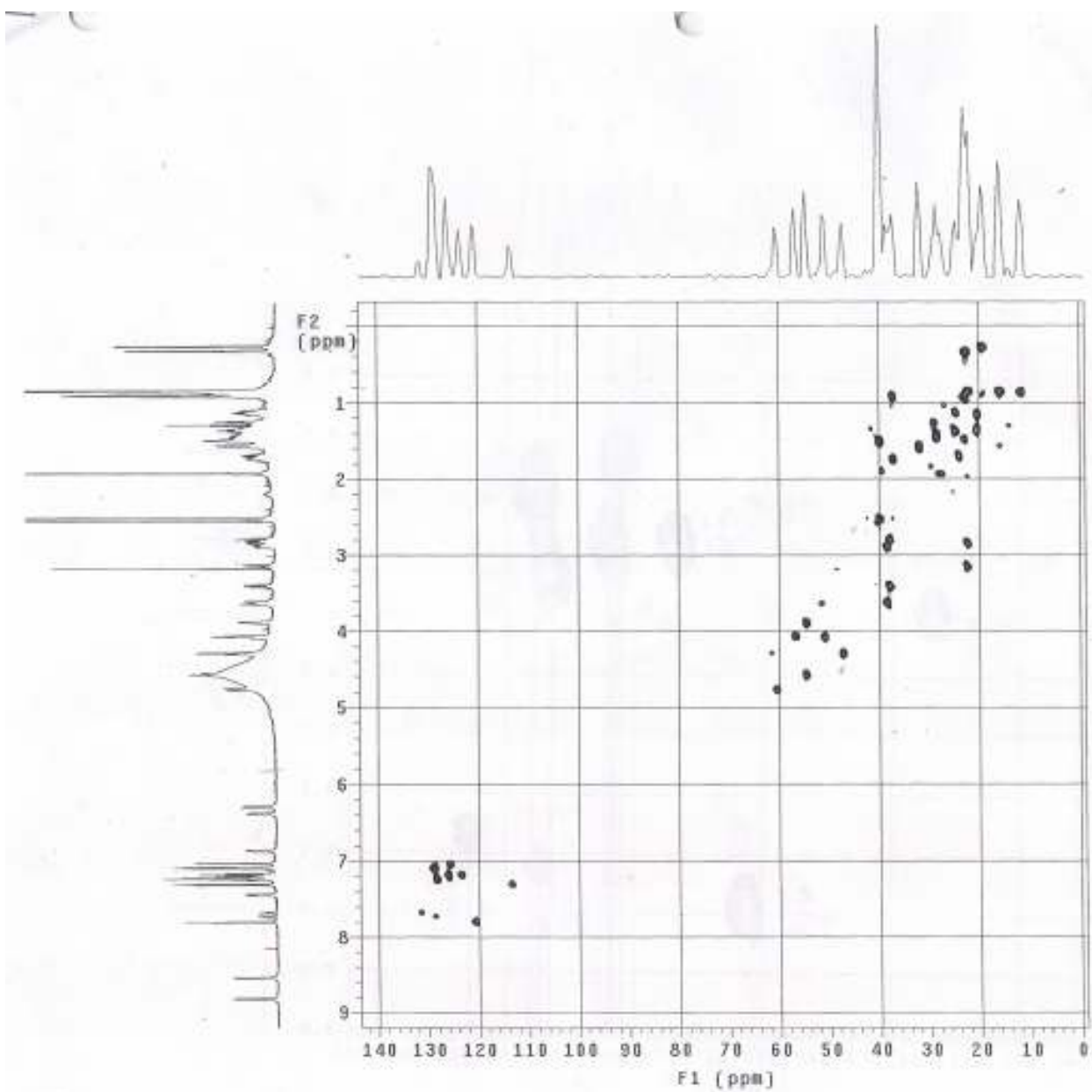


**Figure S5:** <sup>13</sup>C NMR spectrum of psymbamide A (4) in DMSO-*d*<sub>6</sub> at 500 MHz.

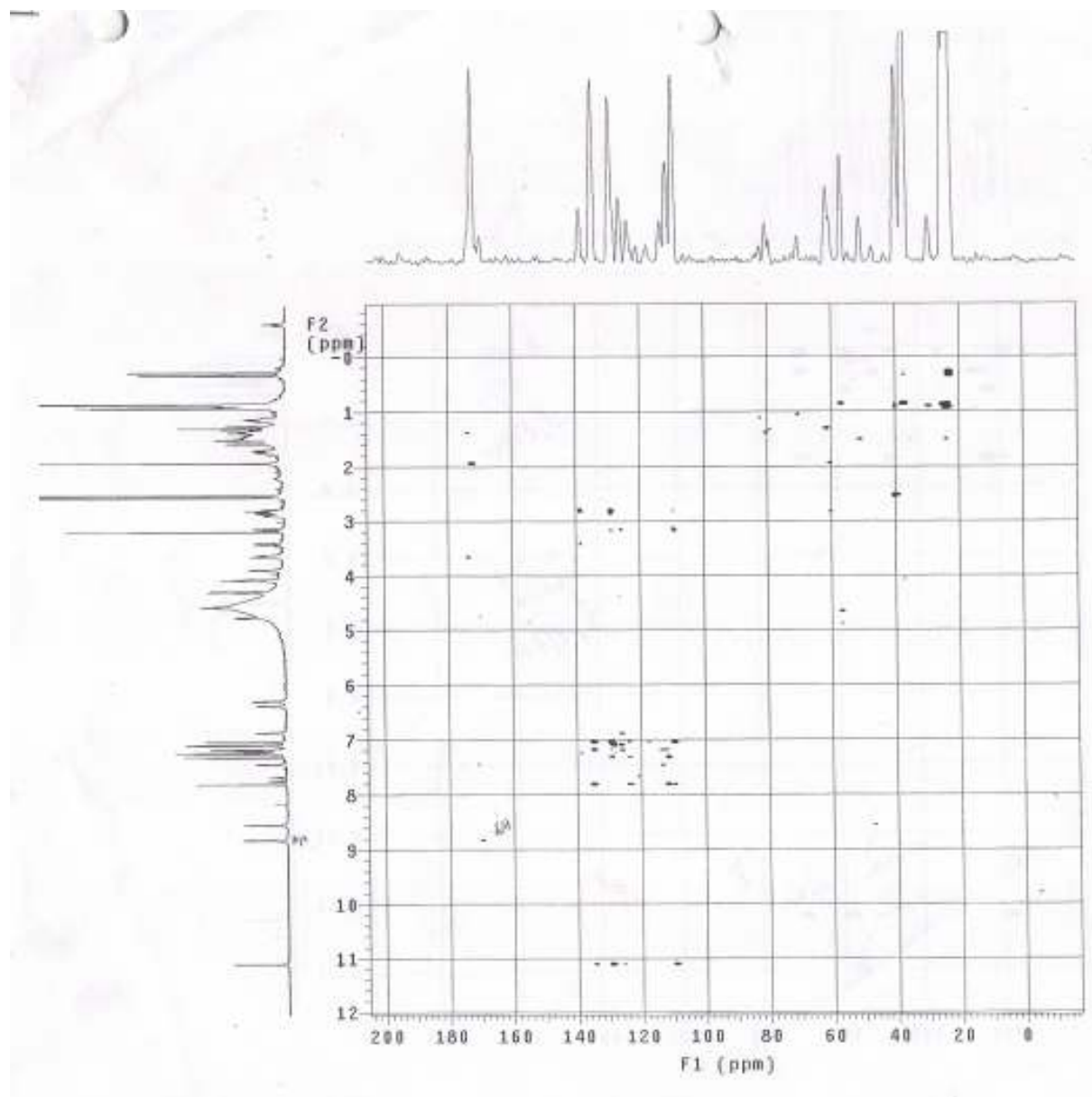


**Figure S6:** gCOSY spectrum of psymbamide A (**4**) in DMSO- $d_6$  at 500 MHz.

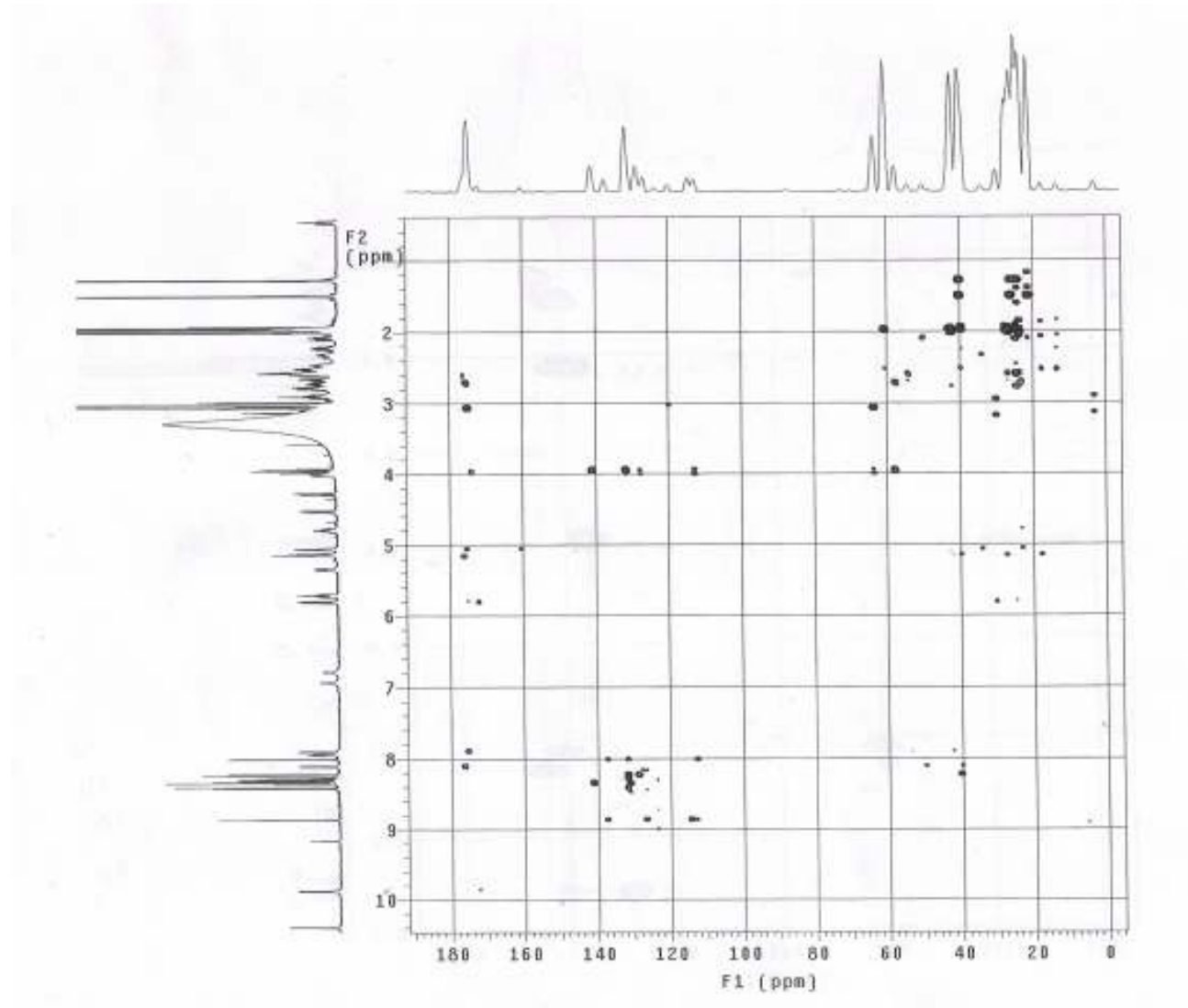




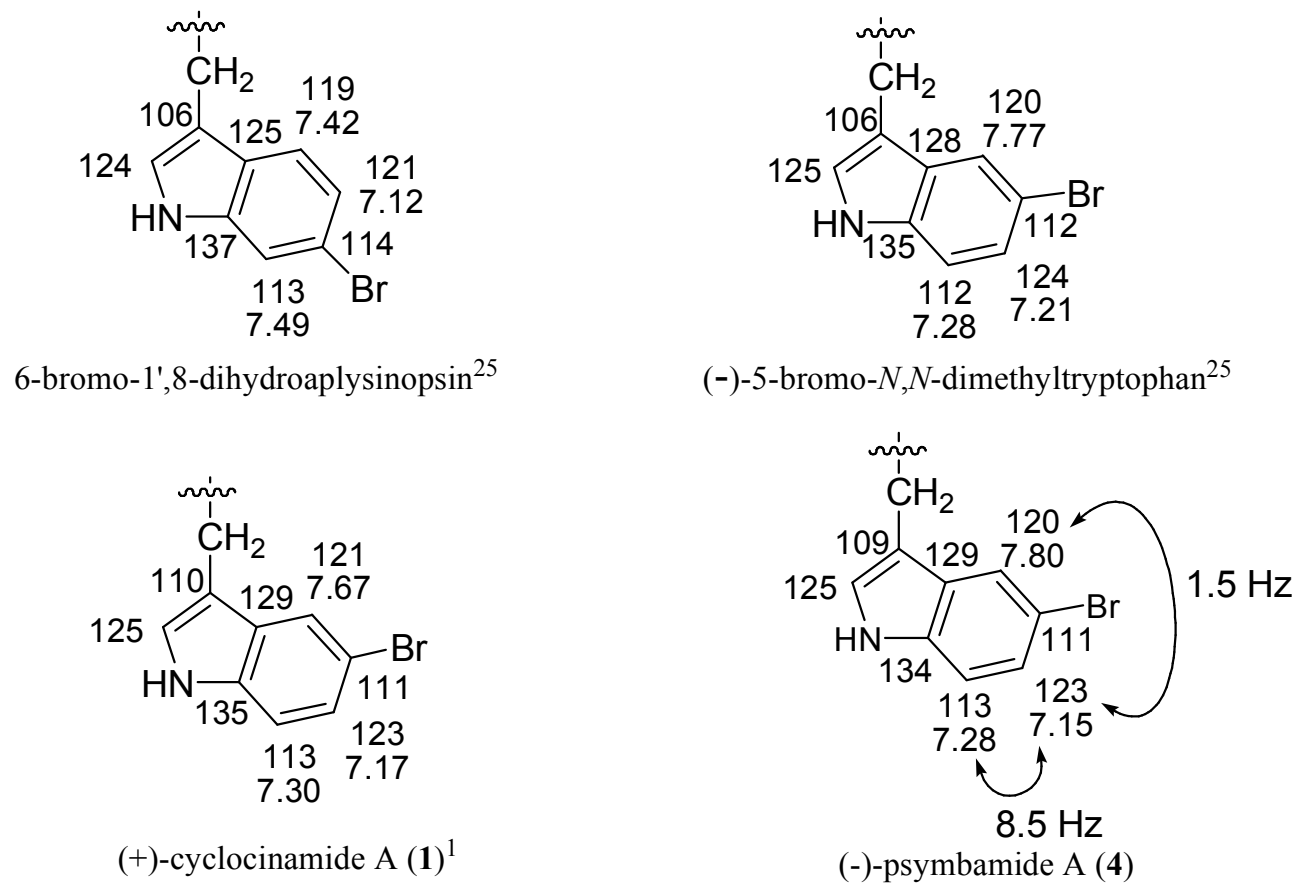
**Figure S7:** HMQC spectrum of psymbamide A (4) in DMSO- $d_6$  at 600 MHz.



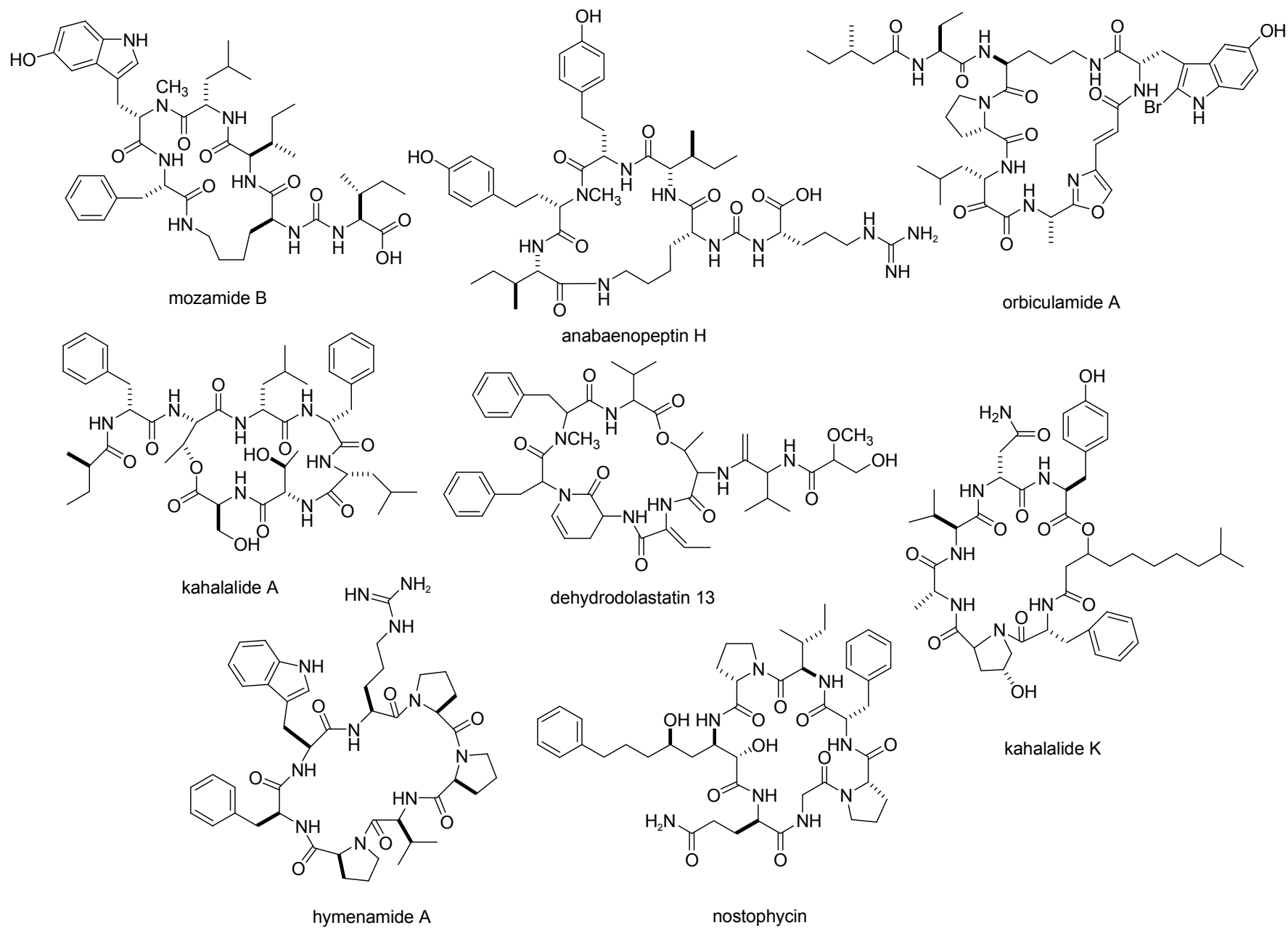
**Figure S8:** gHMBC spectrum of psymbamide A (**4**) in DMSO- $d_6$  at 600 MHz.



**Figure S9:** 5 Hz optimized gHMBC spectrum of psymbamide A (**4**) in CD<sub>3</sub>CN at 600 MHz.



**Figure S10:** <sup>13</sup>C and <sup>1</sup>H shift reference data for Br substituted Trp.



**Figure S11:** Marinlit hits for  $C_{46}N_{7-11}O_{7-11}$ .