

Rolling Circle Amplification-Based Polyvalent Molecular Beacon Probe Assisted Signal-Amplification Strategies for Sensitive-Detection of B16 Cells

Zhiqing Zhang*, Shanshan Wang, Jie Ma, Ting Zhou*, Fang Wang, Xiufeng Wang,
and Guodong Zhang

Department of Chemistry, College of Science, China University of Petroleum (East
China), Qingdao, 266580, P. R. China

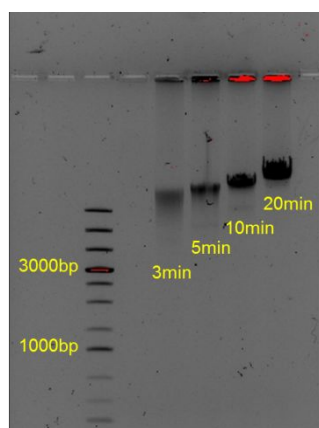


Figure S1. The agarose gel electrophoresis of RCA products under different reaction times.

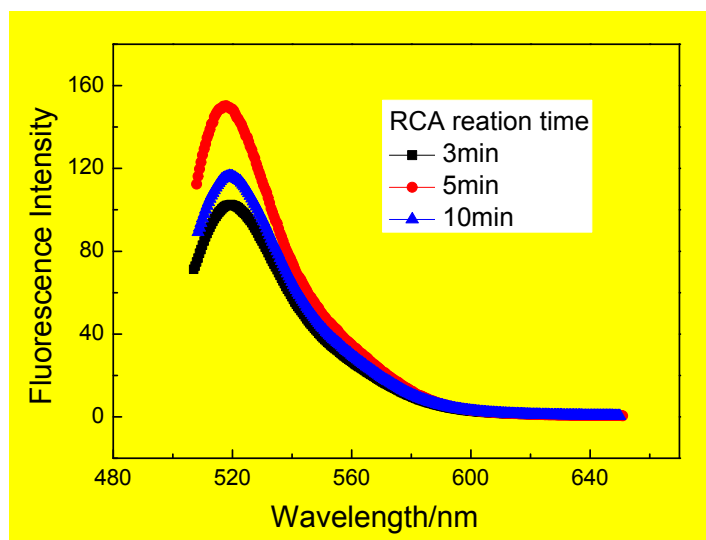


Figure S2. Effect of RCA reaction time on fluorescence intensity of MB ($c_{\text{RCA}}=10\text{nM}$, $c_{\text{MB}}=30\text{nM}$)

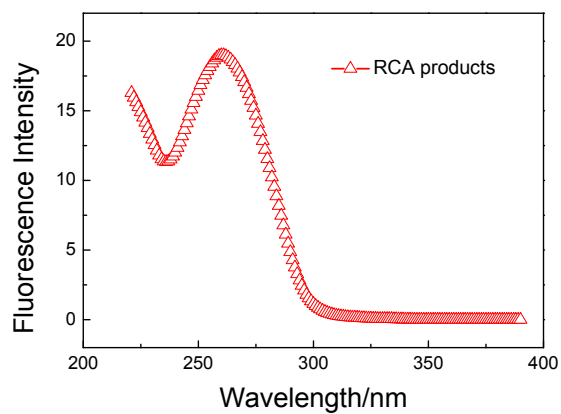


Figure S3. The ultraviolet absorption spectrum of the RCA products.

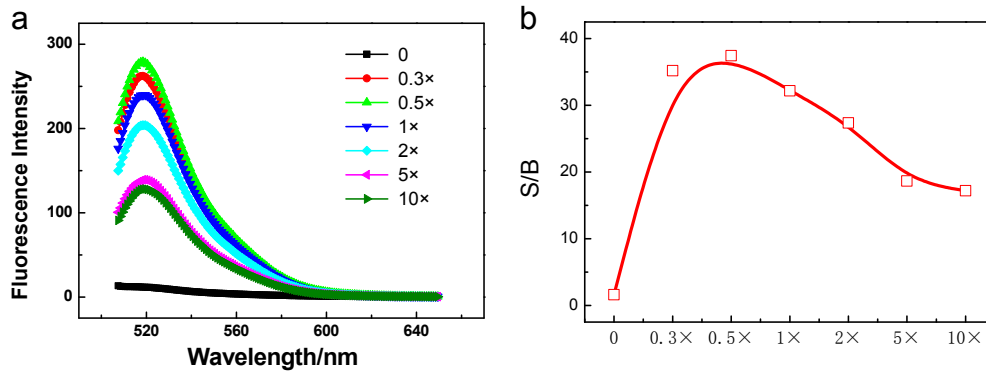


Figure S4. Effect of buffer dilution on fluorescence intensity of assembly.

(a) Fluorescence curve; (b) Signal-to-background ratio curve. Fixed molecular beacon concentration of 30 nM, RCA concentration of 10 nM, change the concentration of the buffer. The composition of the 10× RCA buffer solution: 500 mM Tris-HCl, 100 mM MgCl₂, 100 mM (NH₄)₂SO₄, pH=7.5.

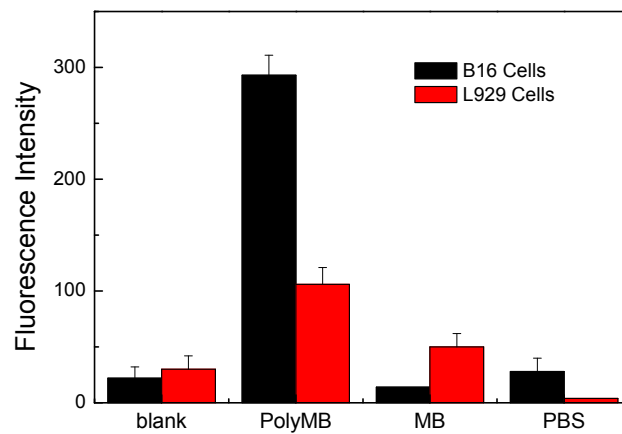


Figure S5. Targeted specific detection of cells by enzyme standard instrument