

Supporting information

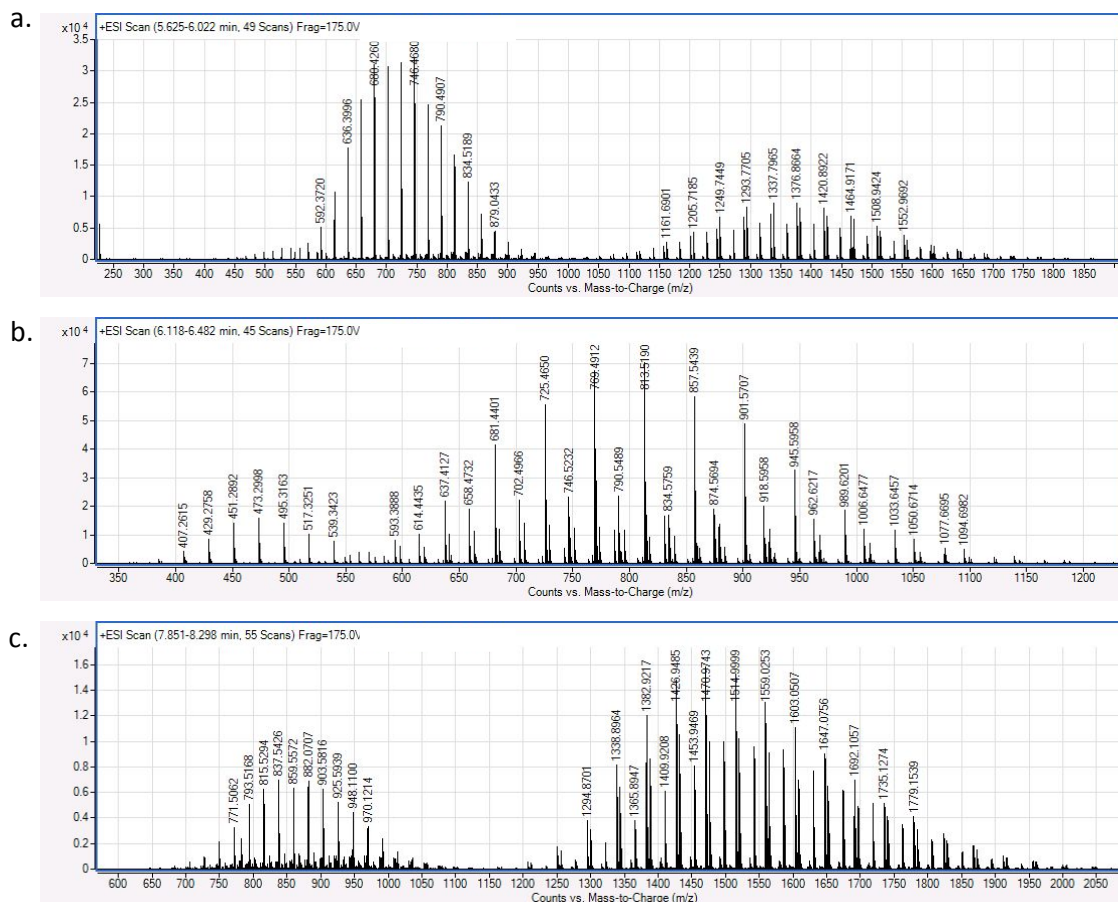


Figure S1: Mass spectra of a) F1a, Sorbitan POE Monolaurate, single charge distribution around 1337.8 m/z with a sodium adduct. b) F2a, Isosorbide POE Monolaurate, single charge distributions around 812.5 m/z (M+1). c) Sorbitan POE Dilaurate single charge distribution around 1515.0 m/z with an ammonium adduct

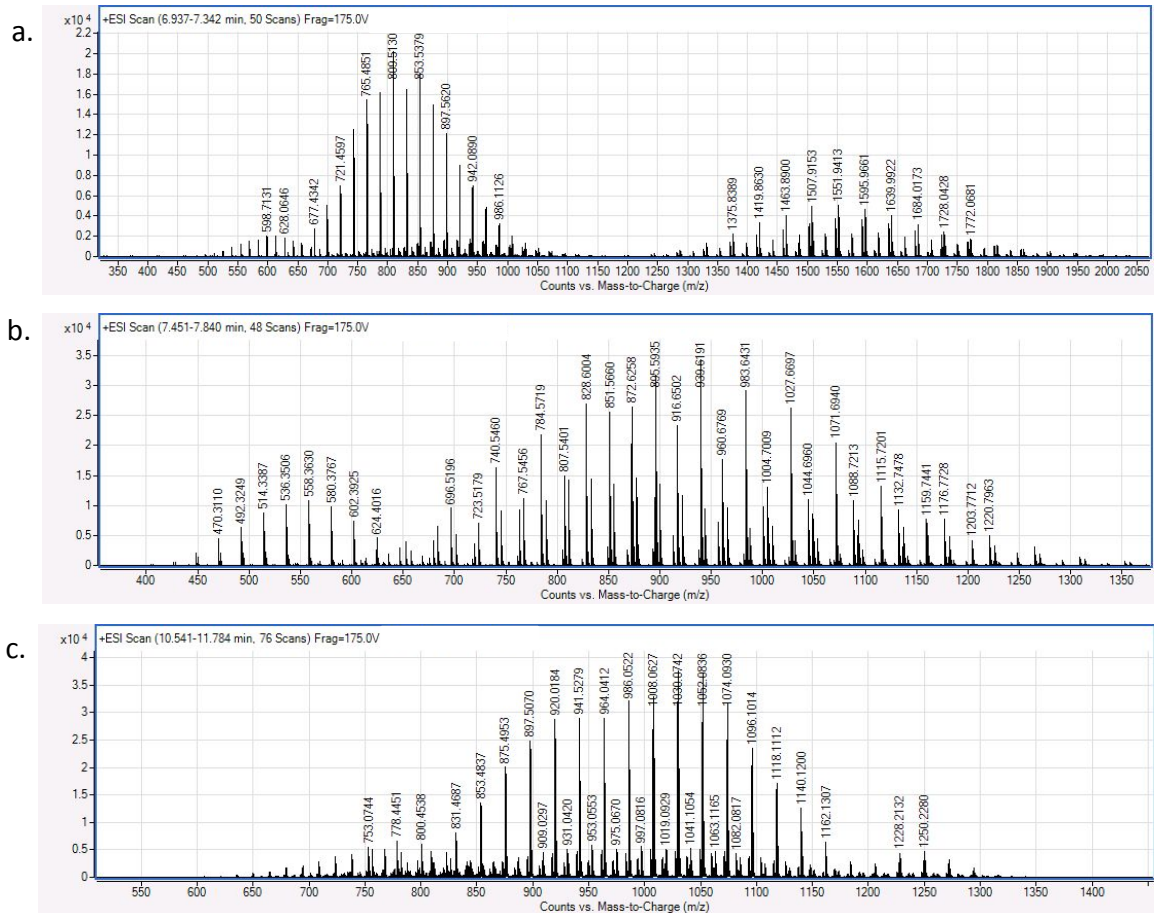


Figure S2: Mass spectra of a) Sorbitan POE Monooleate with a single charge distribution around 1551.9 m/z with a sodium adduct. b) F2b, Isosorbide POE Monooleate, single charge distributions around 939.6 m/z (M+1). c) Sorbitan POE Dioleate single charge distribution around 1030.1 m/z (M+1)