

Supporting information

Dually Reactive Long Recombinant Linkers for Bioconjugations as an Alternative to PEG

Corresponding author Thomas Hoeg-Jensen

Thomas Kjeldsen, Wouter F.J. Hogendorf, Christian W. Tornøe, Jonathan Anderson, Frantisek Hubalek, Carsten E. Stidsen, Jan L. Sorensen, Thomas Hoeg-Jensen*

Novo Nordisk A/S, Novo Nordisk Park H5.S.51, DK-2760 Måløv, Denmark

email tshj@novonordisk.com

Content:

HPLC and LCMS of (GQAP)49-GQEP-Cys(MPAA) **2**

HPLC and LCMS of azido-(GQAP)49-GQEP-Cys(MPAA) **3**

HPLC and LCMS of azido-(GQAP)49-GQEP-Cys **4**

HPLC and LCMS of B29N ϵ -iodoacetyl desB30 human insulin **5**

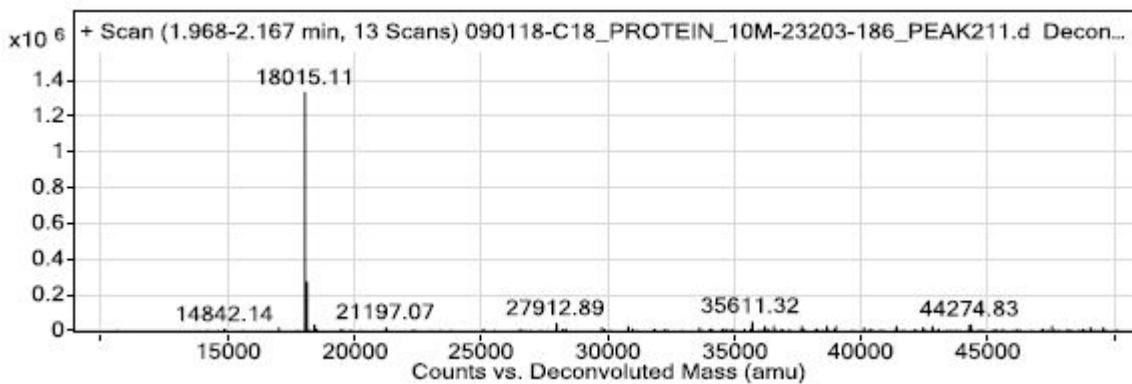
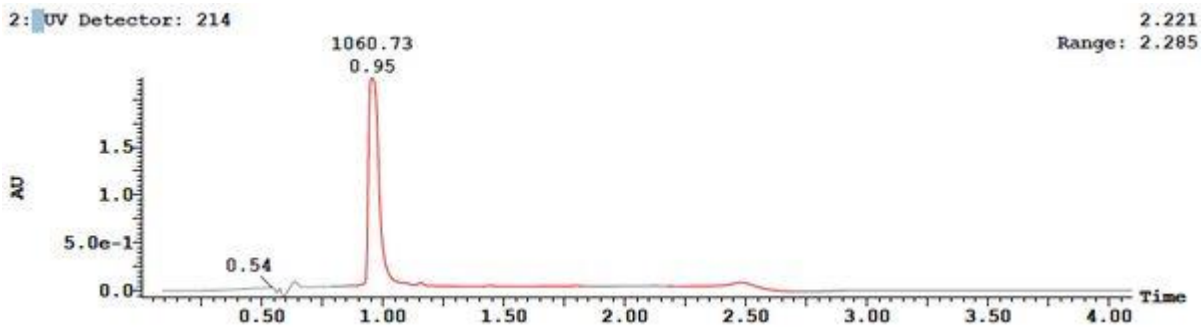
HPLC and LCMS of azido-(GQAP)49-GQEP-Cys(B29N ϵ -acetyl desB30 human insulin) **6**

HPLC and LCMS of 14-proparglycine-SFTI peptide **7**

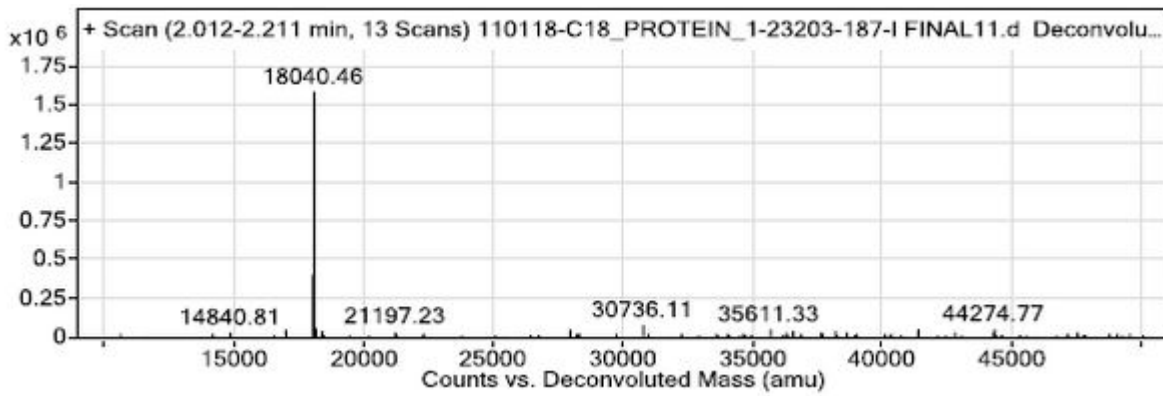
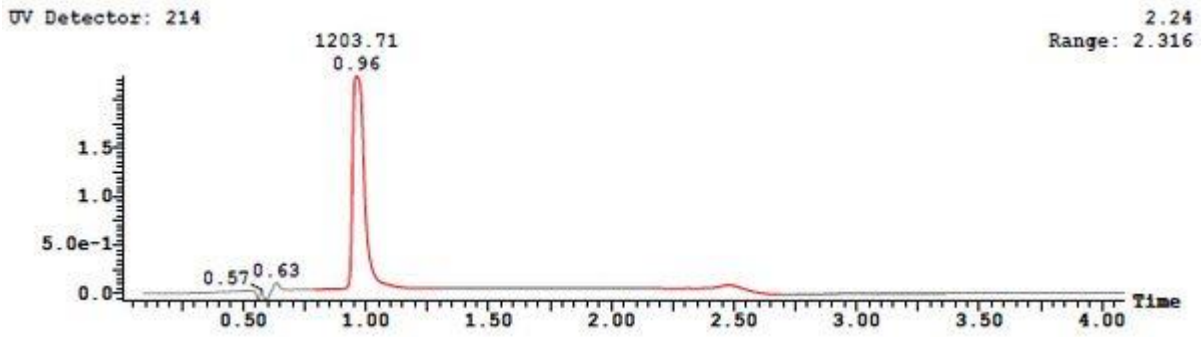
HPLC and LCMS of 27-proparglycine-BBI protein **8**

HPLC and LCMS of SFTI-triazolyl-(GQAP)49-GQEP-Cys(B29N ϵ -acetyl desB30 human insulin) **9**

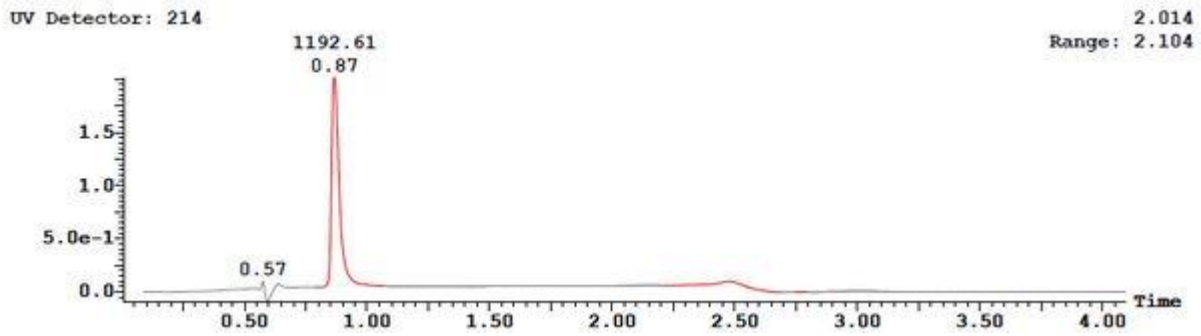
HPLC and LCMS of BBI-triazolyl-(GQAP)49-GQEP-Cys(B29N ϵ -acetyl desB30 human insulin) **10**

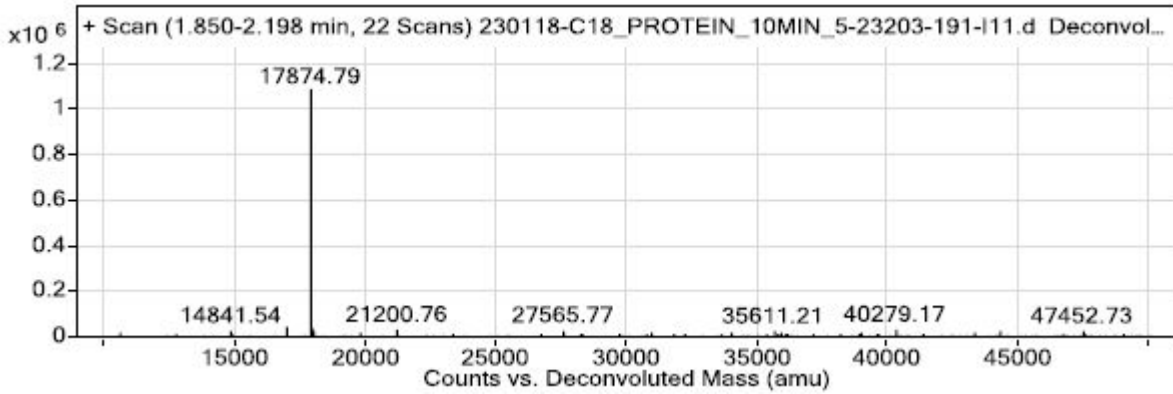


HPLC and LCMS of (GQAP)49-GQEP-Cys(MPAA) **2**

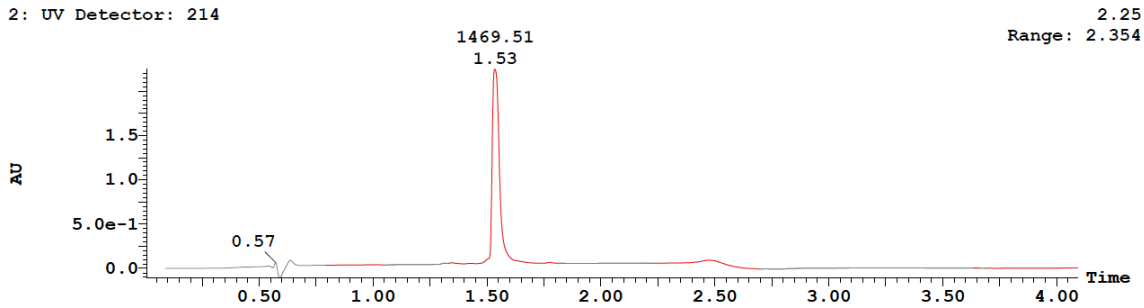


HPLC and LCMS of azido-(GQAP)49-GQEP-Cys(MPAA) **3**



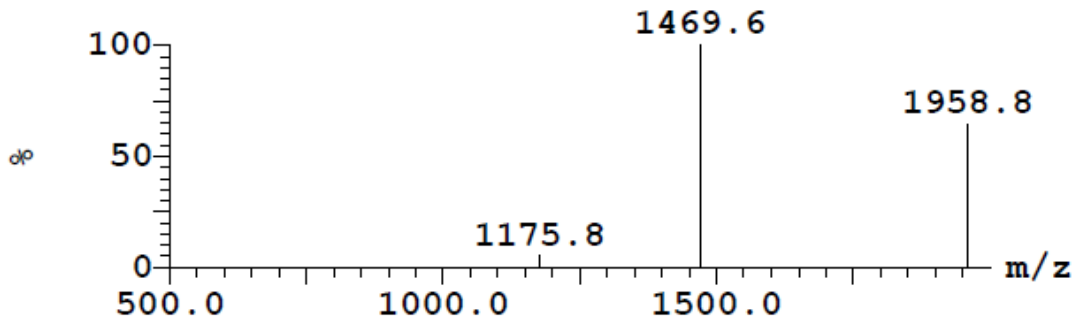


HPLC and LCMS of azido-(GQAP)49-GQEP-Cys **4**

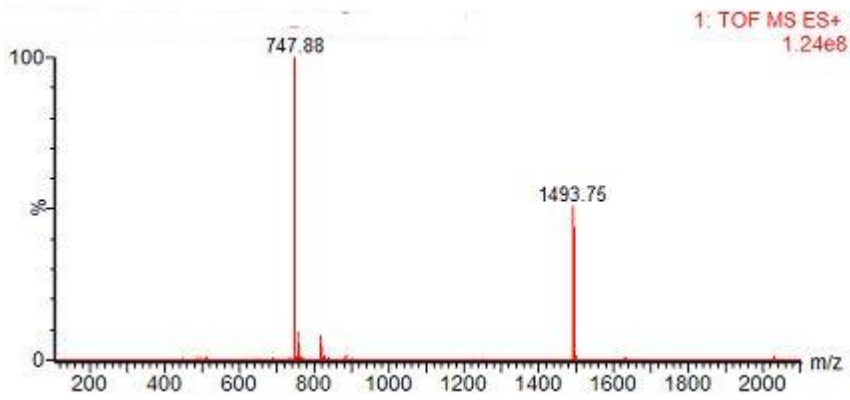
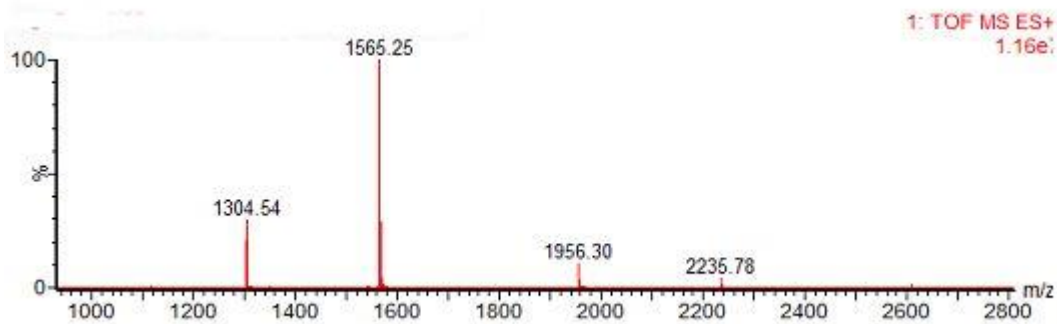
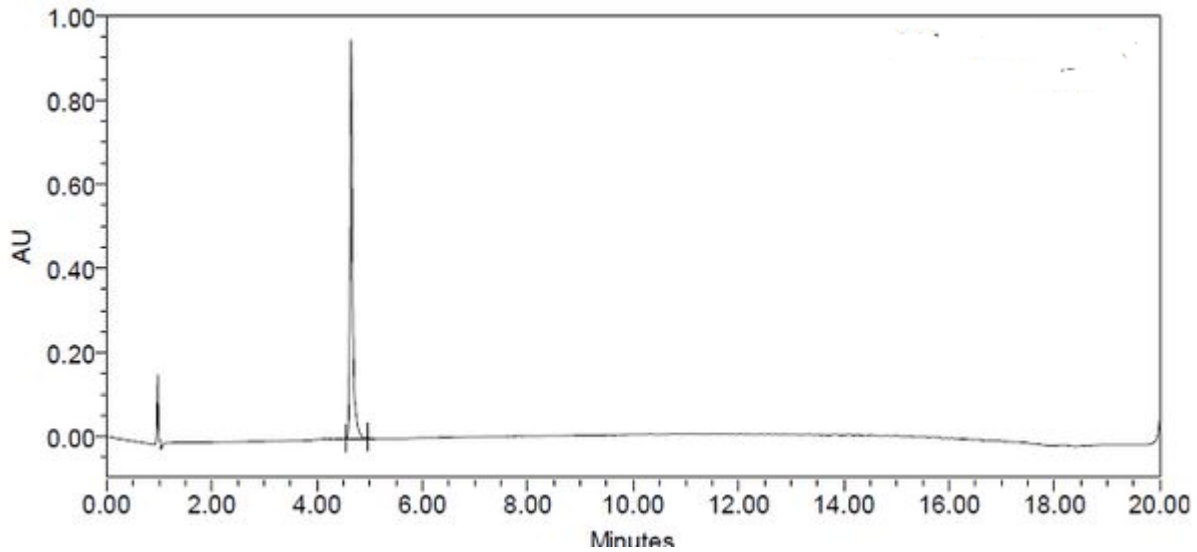


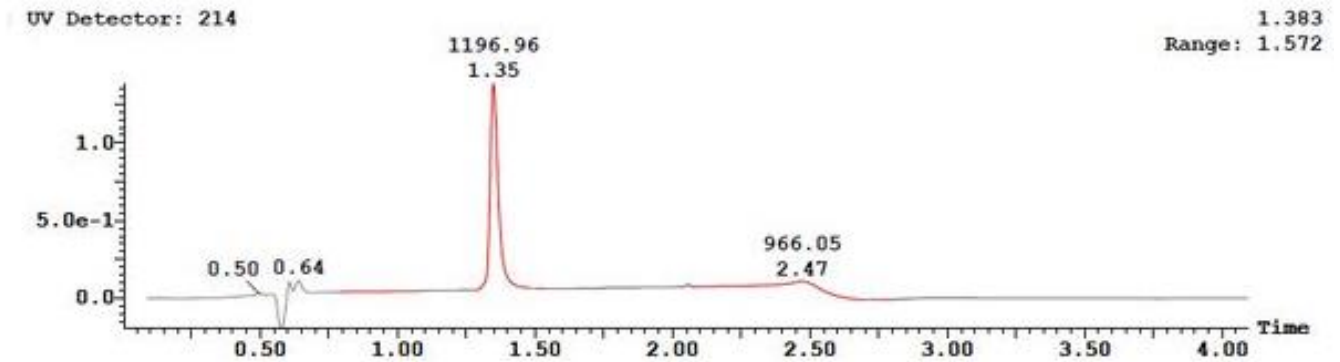
Peak ID	Compound	Time	Mass Found
13		1.43	

1:MS ES+
5.3e+006

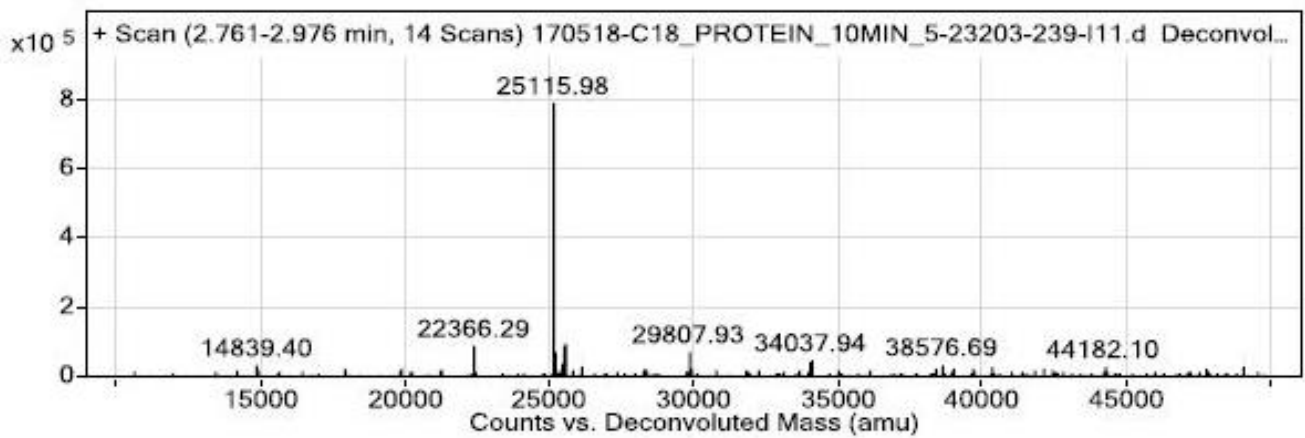


HPLC and LCMS of B29Ne-iodoacetyl desB30 human insulin **5**

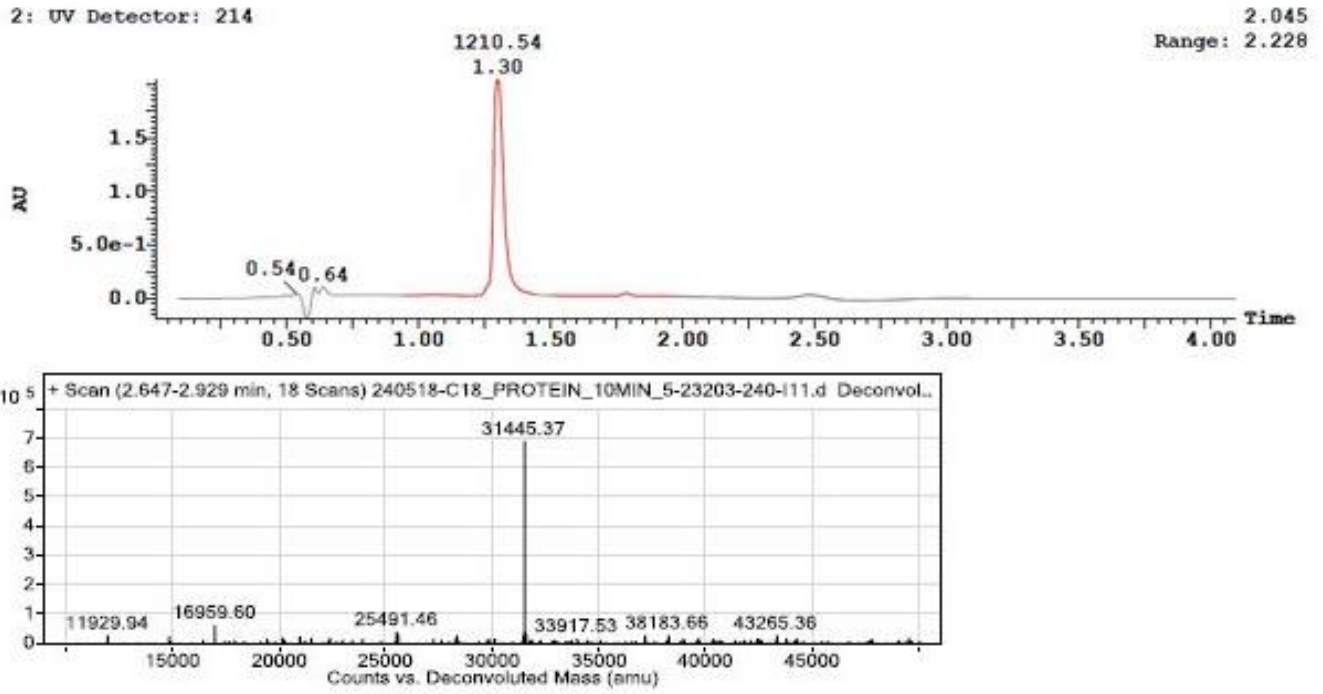
HPLC and LCMS of 14-proparglycine-SFTI peptide **7**HPLC and LCMS of 27-proparglycine-BBI protein **8**



25114,5 /21 +1 =1196,93



HPLC and LCMS of SFTI-triazolyl-(GQAP)49-GQEP-Cys(B29N ϵ -acetyl desB30 human insulin) **9**



HPLC and LCMS of BBI-triazolyl-(GQAP)49-GQEP-Cys(B29N ϵ -acetyl desB30 human insulin) **10**