

Supporting Information

Optimization of Gold Nanoparticles for Efficient Delivery of Catalase to Macrophages for Alleviating Inflammation

Fatima Ba Fakhri^{1,2}, Aya Shanti^{1,2}, Cesare Stefanini^{1,2}, and Sungmun Lee^{1,2,3*}

¹Department of Biomedical Engineering, Khalifa University of Science and Technology, PO Box 127788, Abu Dhabi, United Arab Emirates

²Healthcare Engineering Innovation Center, Khalifa University of Science and Technology, PO Box 127788, Abu Dhabi, United Arab Emirates

³Khalifa University's Center for Biotechnology, PO Box 127788, Abu Dhabi, United Arab Emirates

*Corresponding Author:

Sungmun Lee, Associate Professor.

Department of Biomedical Engineering,
Healthcare Engineering Innovation Center,
Khalifa University's Center for Biotechnology,
Khalifa University of Science and Technology
Abu Dhabi Campus, PO Box 127788

Abu Dhabi, United Arab Emirates

Tel: +971 2 401 8104

Fax: +971 2 447 2442

E-mail: sung.lee@ku.ac.ae

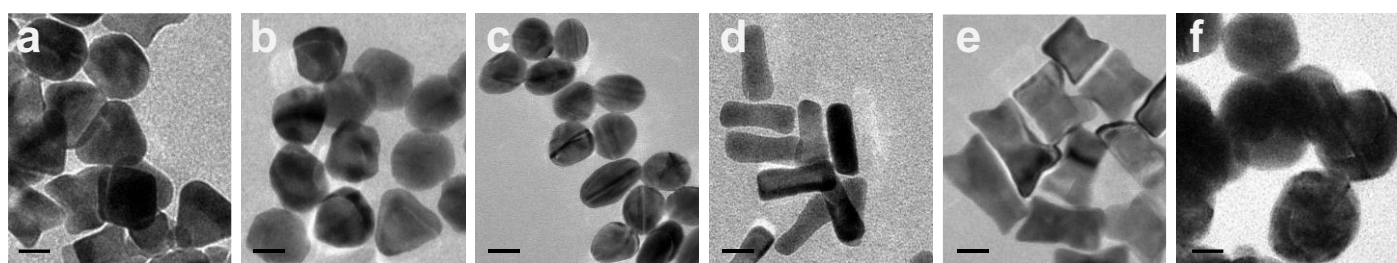


Figure S1. Comparison of TEM images of the different shapes (a) Cube, (b) hexagon, (c) bean, (d) rod, (e) tetrapod, and (f) 50 nm sphere. Scale bar: 20 nm