

The structural stability and biophysical properties of the mega-protein Erythrocrucorin is regulated by polyethylene glycol surface coverage

Chintan Savla¹, Andre F. Palmer^{1}*

¹William G. Lowrie Department of Chemical and Biomolecular Engineering, The Ohio State University, Columbus, OH, 43210

Grant Numbers: NIH R01 HL138116, R01HL126945, and R01EB021926.

***Correspondence:** Andre F. Palmer, William G. Lowrie Department of Chemical and Biomolecular Engineering, The Ohio State University, 452 CBEC, 151 West Woodruff Avenue, OH 43210, USA. *E-mail:* palmer.351@osu.edu. *Phone:* (614) 292-6033.

Supplemental Information

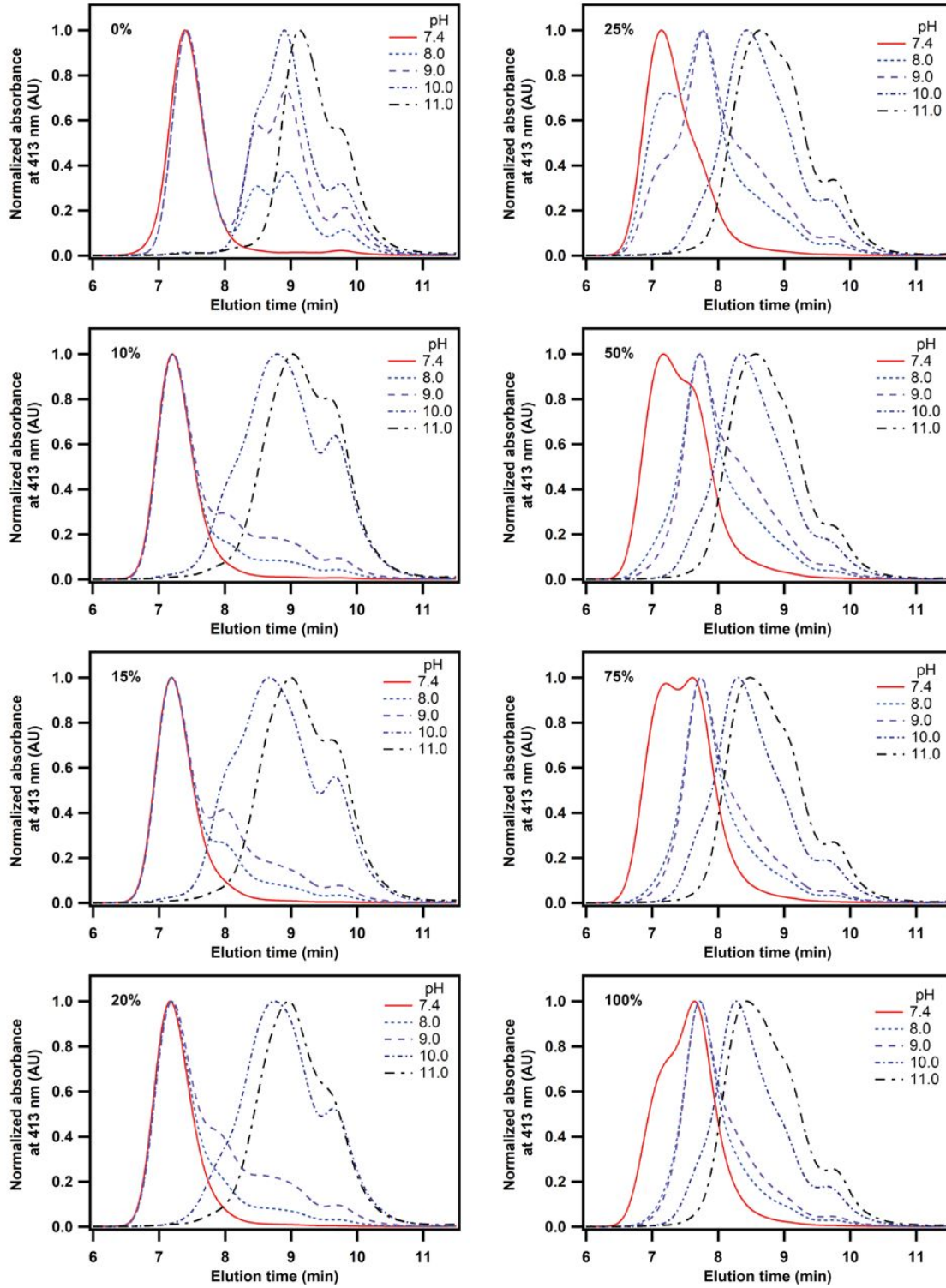


Figure S1: Dissociation of PEG-LtEc species with change in pH from 7.4 to 11.0. LtEc is known to dissociate at pHs >8.0. Partially PEGylated structures have improved structural stability, whereas densely and over-PEGylated structures dissociate easily at pH 8.0 and above.

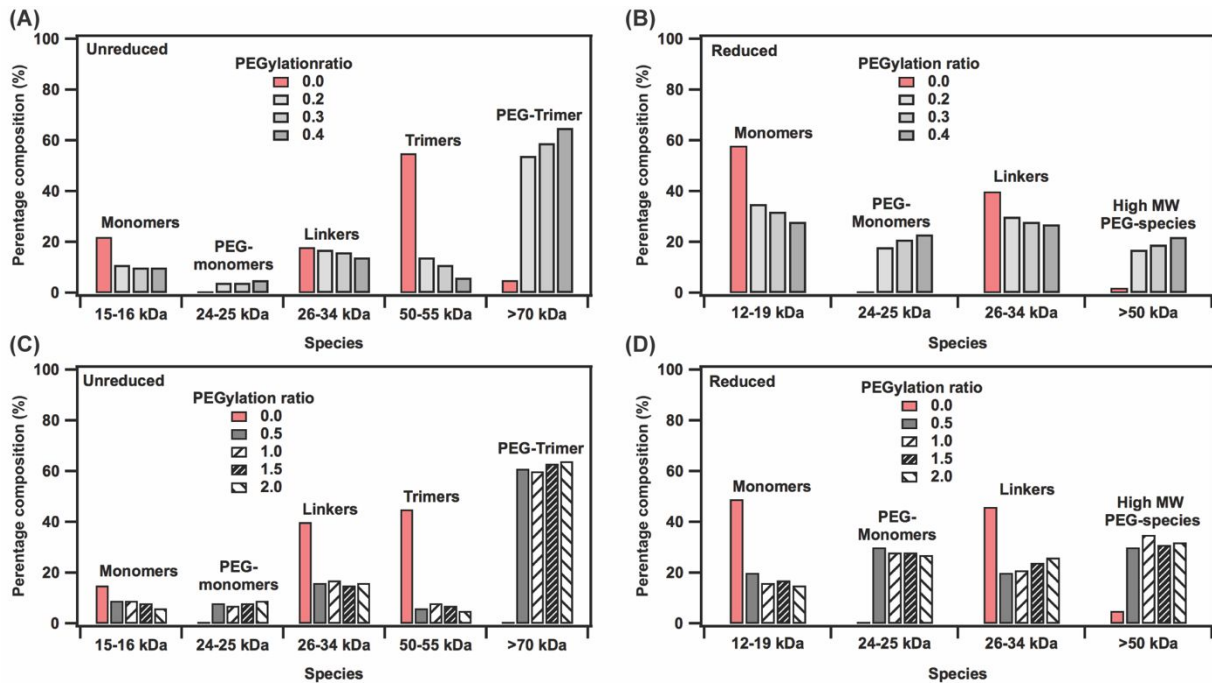


Figure S2: Densitometric analysis of SDS-PAGE runs of LtEc and PEG-LtEc species. There was a decrease in the composition of monomer and trimer species with increasing PEGylation ratio along with the appearance of PEG-monomer and PEG-trimer species confirming successful PEGylation.