

# **Design, simulation and pilot verification of a coupled azeotropic and extractive distillation process for the production of propylene oxide with high purity**

Song Hu<sup>†</sup>, Jinlong Li<sup>\*‡</sup>, Mujin Li<sup>†</sup>, Weisheng Yang<sup>\*†</sup>

<sup>†</sup> State Key Laboratory of Green Chemical Engineering and Industrial Catalysis and Department of Process Development and Design, Shanghai Research Institute of Petrochemical Technology, Shanghai 201208, P.R.China

<sup>‡</sup> School of Petrochemical Engineering, Changzhou University, Changzhou, Jiangsu, 213164, P.R.China

List of the impurities to be removed and the related extractant, comparison between experimental and calculated results for saturated temperature and compositions and some binary mixtures, residue curve maps for mixtures containing NC4, sequential iterative strategy for sensitive analysis, process diagram with operation parameters, TAC calculation model.

## **Corresponding Authors**

\* J.L.: E-mail: [jlli66@yahoo.com](mailto:jlli66@yahoo.com)

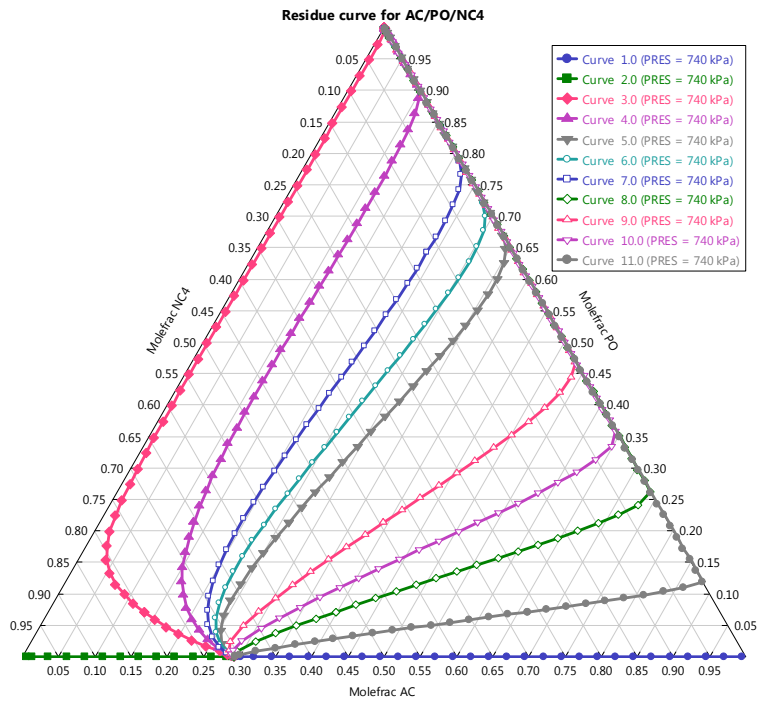
\* W.S.: E-mail: [yangws.sshy@sinopec.com](mailto:yangws.sshy@sinopec.com)

Table S1. The impurities to be removed and related extractant

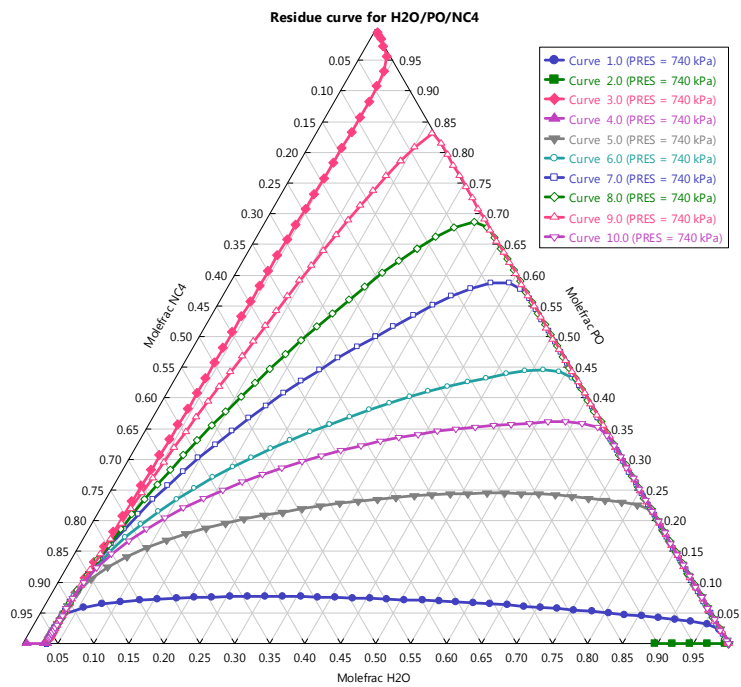
Impurities	Extractant	Ref.
C <sub>5</sub> -C <sub>7</sub> hydrocarbons	C <sub>8</sub> -C <sub>20</sub> open chain or cyclic paraffin	1-3
	T-butyl alcohol/water	4
	C <sub>8</sub> -C <sub>10</sub> paraffinic hydrocarbon/water	5
Water	2-Hydroxyethyl 2-hydroxyethylcarbamate	6
	Sulfolane	7
	Ethylene carbonate, propylene carbonate or a mixture	8
	C <sub>5</sub> -C <sub>8</sub> monohydroxy alkoxyalkanol	9
Aldehyde	T-butyl alcohol/water	4
	C <sub>6</sub> -C <sub>18</sub> acyclic paraffinic hydrocarbons	10
		11, 12
Water, acetone, methanol	1-Methyl-2-pyrrolidone	13
	Triethylene glycol	14
	Dipropylene glycol	14
	1-Propanol	15
	Mixture of triethylene glycol with 2-methyl- 2,4-Pentanediol, or tertiary butyl alcohol or ethylene glycol	16
ethyl formate	C <sub>6</sub> -C <sub>18</sub> acyclic paraffinic hydrocarbons	10, 11
	T-butyl alcohol/water	4
	Octane	11

Table S2. Boiling point and azeotropes of PO systems under 101.325kPa (°C).  
Comparison between experimental and theoretical results

Comp. <i>i</i>	Experimental data <sup>17</sup>		Computed data		Azeotrope type
	Mole fraction	Boiling point	Mole fraction	Boiling point	
NC4	1	0	1	-0.53	
NC4 (740 kPa)	1		1	66.11	
PO	1	35.0	1	34.48	
2MC5	1	60.4	1	60.21	
H <sub>2</sub> O	1	100	1	100.02	
NC8	1	125.75	1	125.69	
PG	1	187.8	1	187.72	
NC4- H <sub>2</sub> O			0.9943:0.0057	-0.67	MIH
NC4- H <sub>2</sub> O (740 kPa)			0.9667:0.0333	64.73	
NC8- H <sub>2</sub> O	0.3152:0.6847	89.60	0.3194:0.6806	89.57	MIH
PG- NC8			0.0844:0.9156	122.65	MIH
PO-2MC5			0.9451:0.0549	34.37	MI
PO-2MC5 (175.8 kPa)	0.9250:0.0750	50	0.9460:0.0540	50.71	MI
PO- H <sub>2</sub> O	0.9685:0.0315	33.80	0.9685:0.0315	33.81	MIH



(a) AC-PO-NC4 at 740kPa



(b) H2O-PO-NC4 at 740kPa

Figure S1. Residue curve maps for ternary mixtures containing NC4

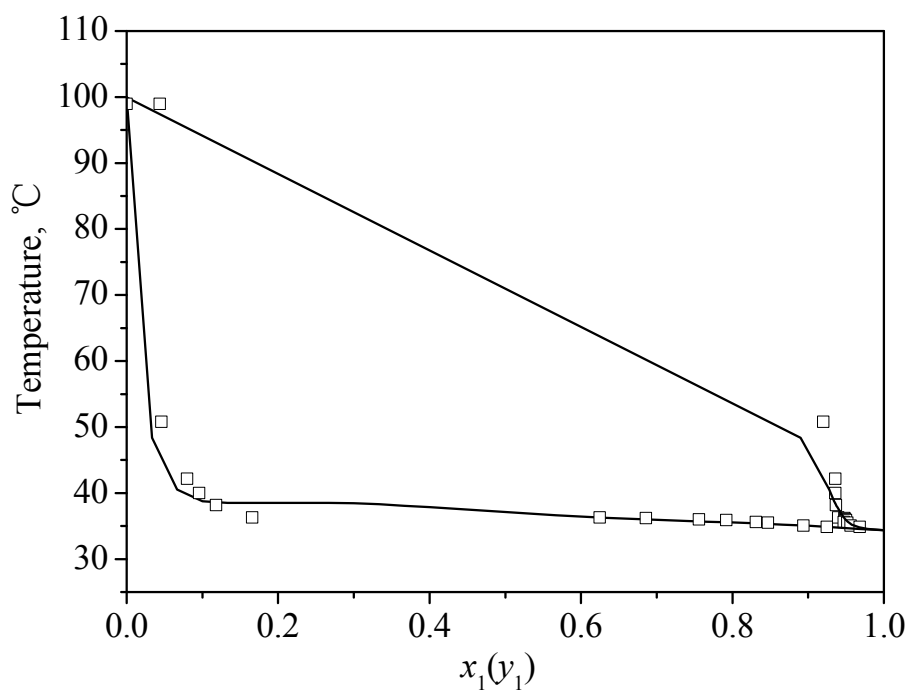


Figure S2. Comparison between experimental<sup>18</sup> and theoretical VLE data for PO and water at 101.325 kPa. (Symbols: experiment; Lines: NRTL)

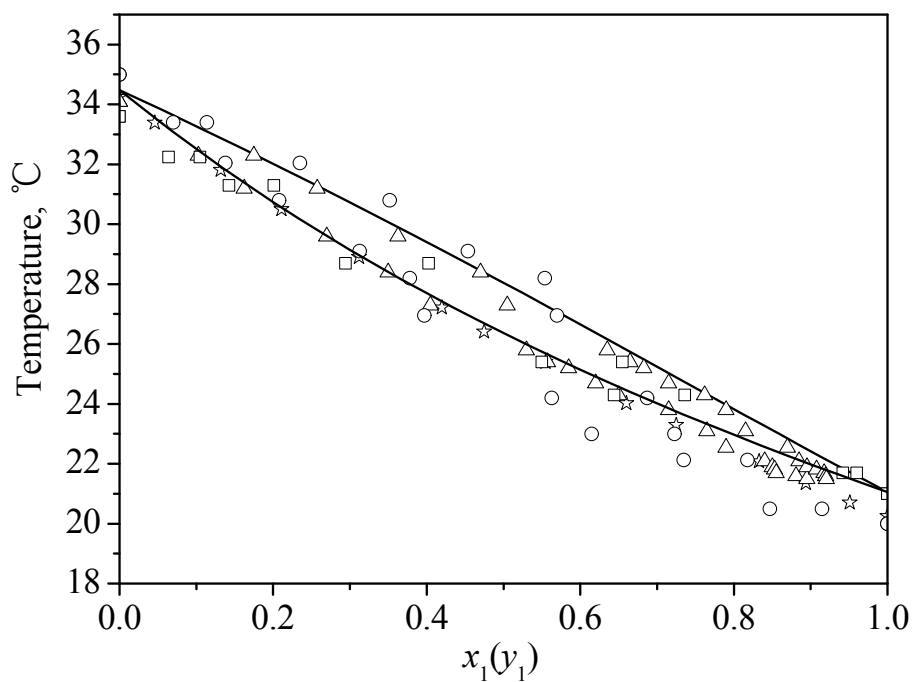


Figure S3. Comparison between experimental<sup>19-22</sup> and theoretical VLE data for PO and AC (AC) at 101.325 kPa. (Symbols: experiment; Lines: NRTL)

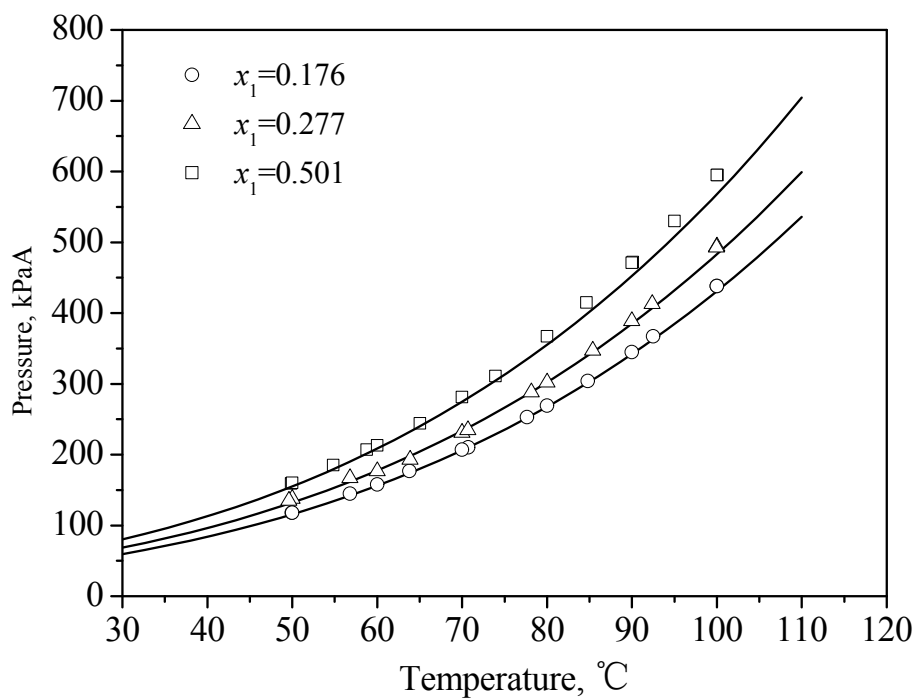


Figure S4. Comparison between experimental<sup>23</sup> and theoretical VLE data for PO + 2-methyl-pentane. (Symbols-experiment; Lines-NRTL)

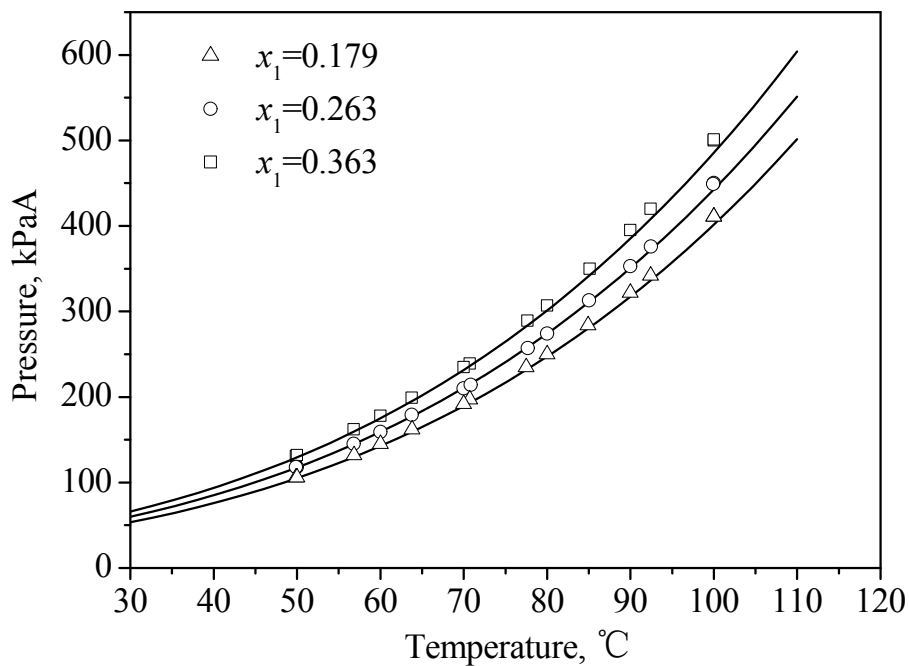


Figure S5. Comparison between experimental<sup>23</sup> and theoretical VLE data for PO + 2-methyl-pentene. (Symbols-experiment; Lines-NRTL)

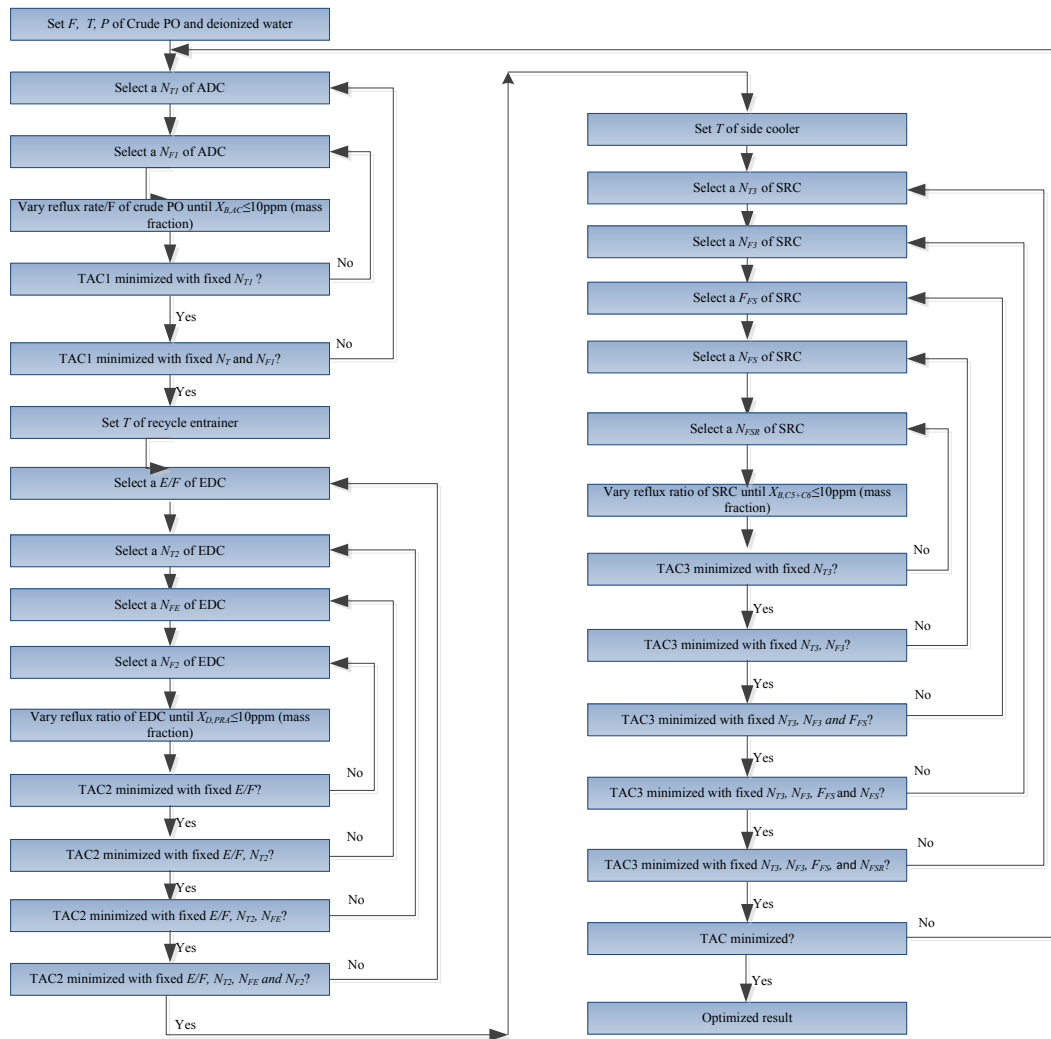


Figure S6. Sequential iterative strategy for sensitive analysis

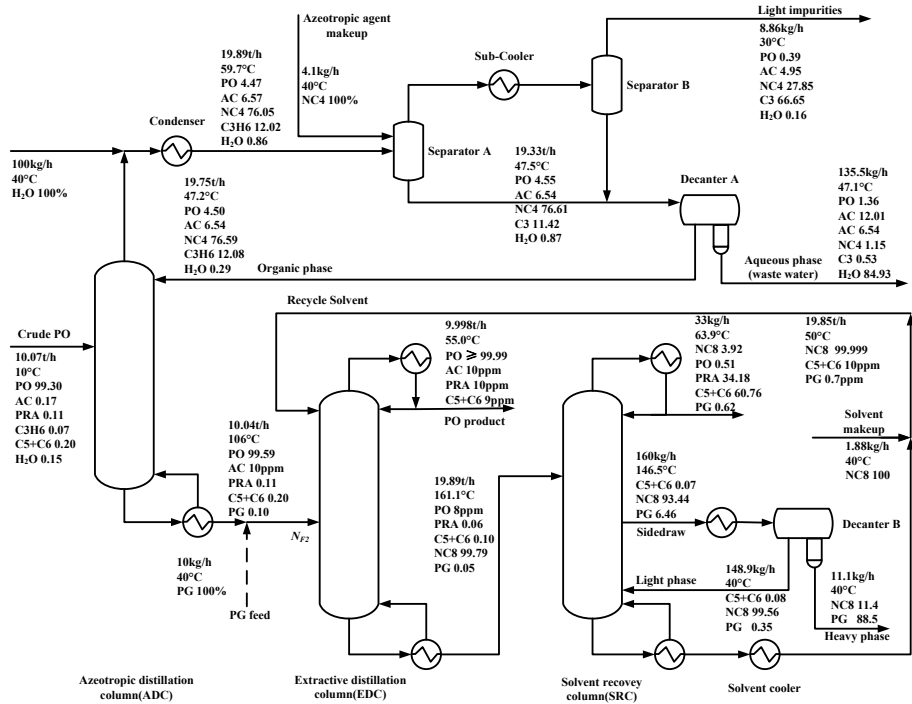


Figure S7. The optimal steady state design flowsheet of PO purification process  
(The unit for the composition is wt%)



## Information of TAC Optimization

In this work, the evaluation of equipment cost followed the procedure of Douglas<sup>24</sup> and the specific equations were from ones in a previous work<sup>25</sup>. A payback period of 3 years was assumed and a M&S index of 1611.7 was applied in calculation. Materials of construction were stainless steel. The equipment was sized as follows.

### (1) Reboiler heat transfer area ( $A_R$ )

$$A_R[\text{ft}^2] = \frac{Q_R}{U_R \cdot \Delta T_R} \quad (\text{S1})$$

where  $Q_R$  [Btuh] is the reboiler duty, the overall heat-transfer coefficient  $U_R$  is assumed to be 250 Btu/(h.ft<sup>2</sup>), and the temperature driving force  $\Delta T_R$  [°F] in the reboiler depends on the steam temperature:

$$\Delta T_R = T_{\text{steam}} - T_R \quad (\text{S2})$$

### (2) Condenser heat-transfer area ( $A_C$ )

$$A_C[\text{ft}^2] = \frac{Q_C}{U_C \cdot \Delta T_C} \quad (\text{S3})$$

where  $Q_C$  [Btuh] is the condenser duty, the overall heat-transfer coefficient  $U_C$  is assumed to be 150 Btu/(h.ft<sup>2</sup>), and the log-mean temperature driving force  $\Delta T_C$  [°F] depends on the dew points and bubble points ( $T_b$ ) for a total condenser:

$$\Delta T_C = \frac{(107.6 - 89.6)}{\ln\left(\frac{T_b - 89.6}{T_b - 107.6}\right)} \quad (\text{S4})$$

### (3) Column length ( $L_C$ )

$$L_C[\text{ft}] = 2.4N_T \quad (\text{S5})$$

where  $N_T$  is the total number of trays? The capital and operating costs are calculated according to:

#### A Column cost and reactor cost

$$\text{column cost}[\$] = \frac{\text{M\&S}}{280}(101.9D_c^{1.066}L_c^{0.802}(2.18 + F_C)) \quad (\text{S6})$$

where  $F_C = F_m F_p = 3.67$ .

#### B Tray cost

$$\text{tray cost}[\$] = \frac{\text{M\&S}}{280}(4.7D_c^{1.55}L_c F_C) \quad (\text{S7})$$

where  $F_C = F_s + F_t + F_m = 1 + 1.8 + 1.7$ .

#### C Heat exchanger cost

$$\text{heat exchanger cost}[\$] = \frac{M\&S}{280}(A^{0.65}(2.29 + F_C)) \quad (S8)$$

where  $F_C = (F_d + F_p)F_m = (1.35 + 0)3.75$  for the reboiler and  $F_C = (F_d + F_p)F_m = (1 + 0)3.75$  for the condenser and cooler.

#### D Steam cost

$$\text{steam cost}[\$/\text{year}] = P_{\text{steam}}\left(\frac{Q_R * 3600}{10^9}\right) \left(8150 \frac{\text{h}}{\text{year}}\right) \quad (S9)$$

where  $P_{\text{steam}}$  is the price of steam.

#### E Cooling water cost

$$\text{cooling water cost}[\$/\text{year}] = P_{\text{CW}}\left(\frac{Q_C * 1055.06}{c_p \frac{(107.6 - 89.6)}{1.8}}\right) \left(8150 \frac{\text{h}}{\text{year}}\right) \quad (S10)$$

where  $C_p$  is the heat capacity of water, equal to 4200J/kg/K,  $P_{\text{CW}}$  is the price of cooling water.

#### F Chilled water cost

$$\text{Chilled water cost}[\$/\text{year}] = P_{\text{ChW}} * Q_C * \frac{1055.06}{10^9} \left(8150 \frac{\text{h}}{\text{year}}\right) \quad (S11)$$

#### (4) Cooler heat-transfer area ( $A_{\text{Cooler}}$ )

$$A_{\text{Cooler}}[\text{ft}^2] = \frac{Q_{\text{Cooler}}}{U_{\text{Cooler}} \cdot \Delta T_{\text{Cooler}}} \quad (S12)$$

where  $Q_{\text{Cooler}}$  [Btuh] is the cooler duty, the overall heat-transfer coefficient  $U_C$  is assumed to be 50 Btu/(h.ft<sup>2</sup>), and the log-mean temperature driving force  $\Delta T_{\text{Cooler}}$  [°F] depends on the inlet and outlet temperature of cooler. The difference of temperature for heat transfer for cooling water and chilled water were calculated by:

Cooling water

$$\Delta T_{\text{Cooler}} = \frac{(T_{\text{hot,in}} - 107.6) - (T_{\text{hot,out}} - 89.6)}{\ln\left(\frac{T_{\text{hot,in}} - 89.6}{T_{\text{hot,out}} - 107.6}\right)} \quad (S13)$$

and

$$\Delta T_{\text{Cooler}} = \frac{(T_{\text{hot,in}} - 59) - (T_{\text{hot,out}} - 41)}{\ln\left(\frac{T_{\text{hot,in}} - 41}{T_{\text{hot,out}} - 59}\right)} \quad (S14)$$

Other parameters like price and energy were listed as following:

- Low-pressure steam (6 bar, 87 psia, 160 °C/433K/320°F) = \$7.78/GJ
- Medium-pressure steam (11 bar, 160 psia, 184 °C/457K/363°F) = \$8.22/GJ

- High-pressure steam ( 42 bar, 611 psia, 254 °C/527K/490°F ) =\$9.88/GJ
- Electricity = \$16.8/GJ

For the refrigeration, the following parameters were used:

- Chilled water at 5 °C , returned at 15 °C=4.43/GJ
- Refrigerant at -20 °C=7.89/GJ
- Refrigerant at -50 °C =13.11/GJ

## REFERENCE

- (1) Schmidt, J. U.; Garcia, A. U. Separation of propylene oxide from other hydrocarbons. U.S. Pat.3843488, 1967.
- (2) Jubin, J. J. C. Separation of propylene oxide from other hydrocarbons. U.S. Pat. 3464897, 1969.
- (3) Schmidt, J. P.; Garcia, J. A. Purification of propylene oxide by distillation. U.S. Pat. 3909366, 1972.
- (4) Shih, T. T.; Sim, W. J. Propylene oxide purification. U.S. Pat. 5006206, 1991.
- (5) Smith, W. A.; Meyer, R. A.; Nguyen, E. T. Purification of propylene oxide by liquid extraction. U.S. Pat. 5127997, 1992.
- (6) Yeakey, E. L.; Marquis, E. T. Removal of water, methanol and acetone from propylene oxide by extractive distillation. U.S. Pat. 5116465, 1992.
- (7) Marquis, E. T.; Speranza, G. P.; Sheu, Y. E.; Culbreth, W. K., III; Pattratz, D. G. Water and acetone removal from propylene oxide by extractive distillation. U.S. Pat. 5116467, 1992.
- (8) Marquis, E. T.; Speranza, G. P.; Sheu, Y. H. E.; Culbreth, W. K., III; Pottratz, D. G. Removal of water and methanol from propylene oxide by extractive distillation. U.S. Pat.5145561, 1991.
- (9) Marquis, E. T.; Speranza, G. P.; Sheu, Y. H. E.; Culbreth, W. K., III; Pottratz, D. G. Removal of water, acetone and methanol from propylene oxide by extractive distillation. U.S. Pat.5154804, 1991.
- (10) Binning, R. C.; Crum, G. F. Extractive Distillation Of Olefin Oxides With A Paraffin Or Paraffin Naphtha Solvent. U.S. Pat.3338800, 1964.
- (11) Shih, T. T. Lower alkylene oxide purification. U.S. Pat. 5133839, 1991.
- (12) Hu, S.; Li, J. L.; Li, M. J.; Yang, W. S. Extractive refining process for production of propylene oxide with high purification. *CIESC J.* **2019**, *70*, 670-677.
- (13) Marquis, E. T.; Speranza, G. P.; Sheu, Y. E.; Culbreth, W. K., III; Pattratz, D. G. Propylene oxide purification by extractive distillation. U.S. Pat. 5116466, 1992.
- (14) Marquis, E. T.; Speranza, G. P.; Sheu, Y. E.; Culbreth, W. K., III; Pattratz, D. G. Purification of propylene oxide by extractive distillation. U.S. Pat. 5139622, 1992.
- (15) Smith, W. A.; Mueller, M. A. Extractive distillation of propylene oxide using propanol. U.S. Pat. 5620568, 1997.
- (16) Nelson, W. P.; Smith, W. A. Purification of propylene oxide by cosolvent extractive distillation. U.S. Pat.5340466, 1992.

- (17) Horsley, L. H. *Azeotropic Data-III. Advances in Chemistry Series*. American Chemical Society: Washington, D.C., 1973.
- (18) Gleperin, N. I.; Pebalk, V. L.; Varfolomeev, V. G.; Smirnova, O. V.; Denisov, O. G. Liquid-vapor equilibrium in binary systems. *Zh. Prikl. Khim.* **1976**, *49*, 880-881.
- (19) Vilcu, R.; Cenuse, Z. Liquid-vapor equilibria under isobaric conditions in the propene oxide-acetaldehyde binary system. *Rev. Chim. (Bucharest)* **1986**, *37*, 282-284.
- (20) Muehlenbruch, M.; Figurski, G. The vapor-liquid equilibrium of the binary systems acetaldehyde-propylene oxide, acetaldehyde-methylformate, and propylene oxide-propan-2-ol at 101.325 kPa. *J. Phys. Chem. (Leipzig)* **1989**, *270*, 305.
- (21) Horstmann, S.; Wilken, M.; Fischer, K.; Gmehling, J. Isothermal Vapor-Liquid Equilibrium and Excess Enthalpy Data for the Binary Systems Propylene Oxide + 2-Methylpentane and Difluoromethane (R32) + Pentafluoroethane (R125). *J. Chem. Eng. Data* **2004**, *49*, 1504-1507.
- (22) Raeissi, S.; Florusse, L. J.; Peters, C. J. Vapor-liquid equilibria of binary mixtures of propylene oxide with either ethyl benzene, 2-methylpentane, or 2-methyl-1-pentene. *Fluid Phase Equilib.* **2013**, *352*, 97-99.
- (23) Knight, J. R.; Doherty, M. F. Optimal design and synthesis of homogeneous azeotropic distillation sequences. *Ind. Eng. Chem. Res.* **1989**, *28*, 564-572.
- (24) Douglas, J. M. *Conceptual Design of Chemical Processes*. McGraw-Hill: New York, 1988.
- (25) Zhang, B. J.; Yang, W. S.; Hu, S.; Liang, Y. Z.; Chen, Q. L. A reactive distillation process with a sidedraw stream to enhance the production of isopropyl acetate. *Chem. Eng. Process.* **2013**, *70*, 117-130.