

## Supporting Information for

# Confining Nano GeP in Nitrogenous Hollow Carbon Fibers towards Flexible and High Performance Lithium-Ion Battery

Tianbiao Zeng<sup>a,c</sup>, Dong Feng<sup>\*a,b</sup>, Qi Liu<sup>b</sup>, Ruoyu Zhou<sup>c</sup>

a. State Key Laboratory of Polymer Materials Engineering, Polymer Research Institute of Sichuan University, Chengdu 610065, China

b. Faculty of Chemical Engineering, Kunming University of Science and Technology, Kunming 650500, China

c. Chengdu Institute of Organic Chemistry, Chinese Academy of Sciences, Chengdu 610041, China

\*: Corresponding authors, [fdryan@kust.edu.cn](mailto:fdryan@kust.edu.cn) (Dong Feng)

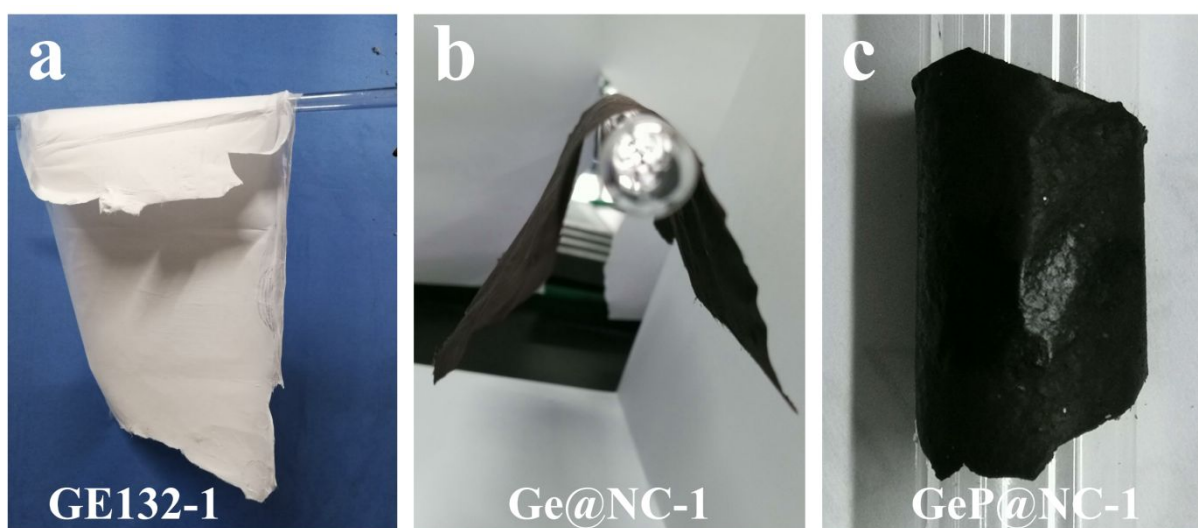


Figure S1. Digital photos of GeP@NC- $x$ . (a)  $x=0$ , (b)  $x=1$ , (c)  $x=2$ .

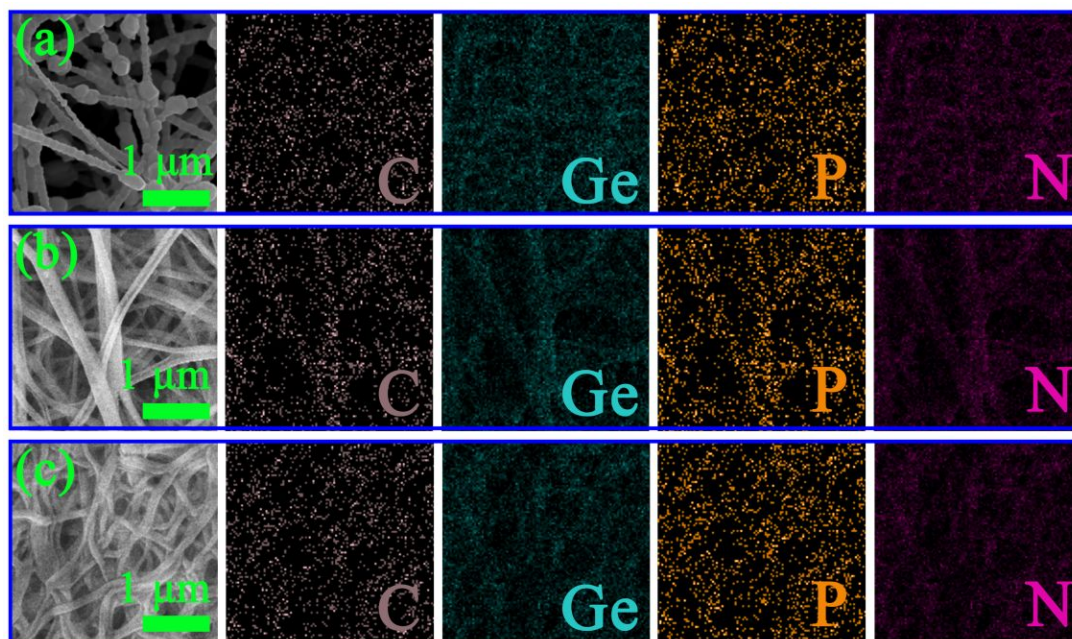


Figure S2. SEM and C, Ge, P, N elements mapping images of GeP@NC- $x$ . (a)  $x=0$ , (b)  $x=1$ , (c)  $x=2$ .

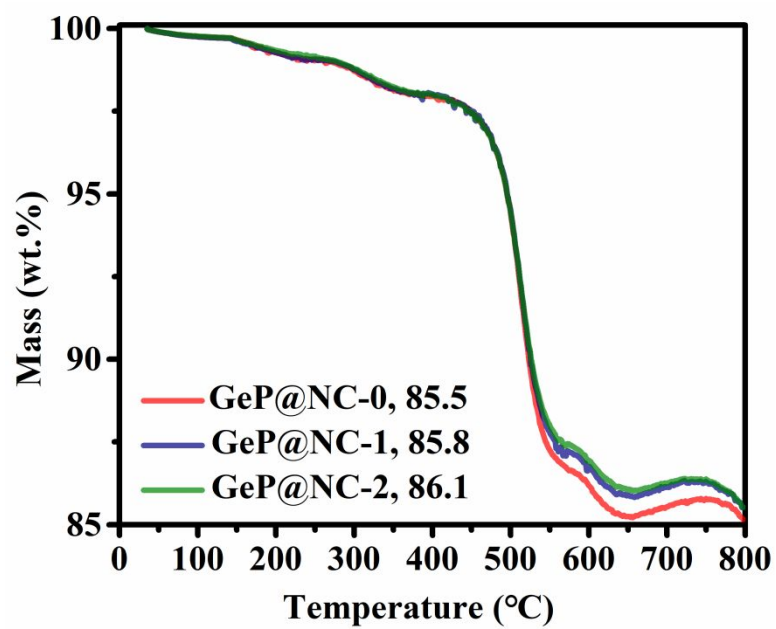


Figure S3. TG analysis of GeP@NC- $x$  samples.

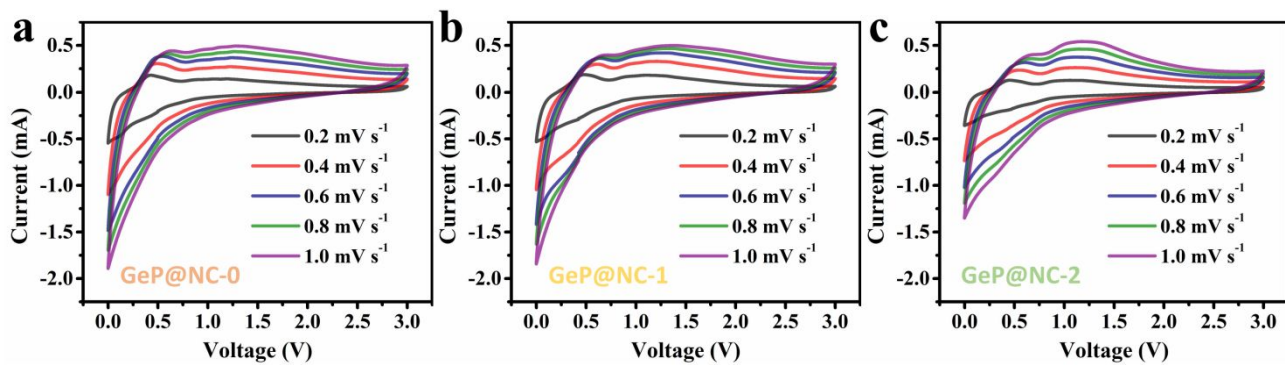


Figure S4. Rate CV curves of GeP@NC-*x* under various scanning rate.

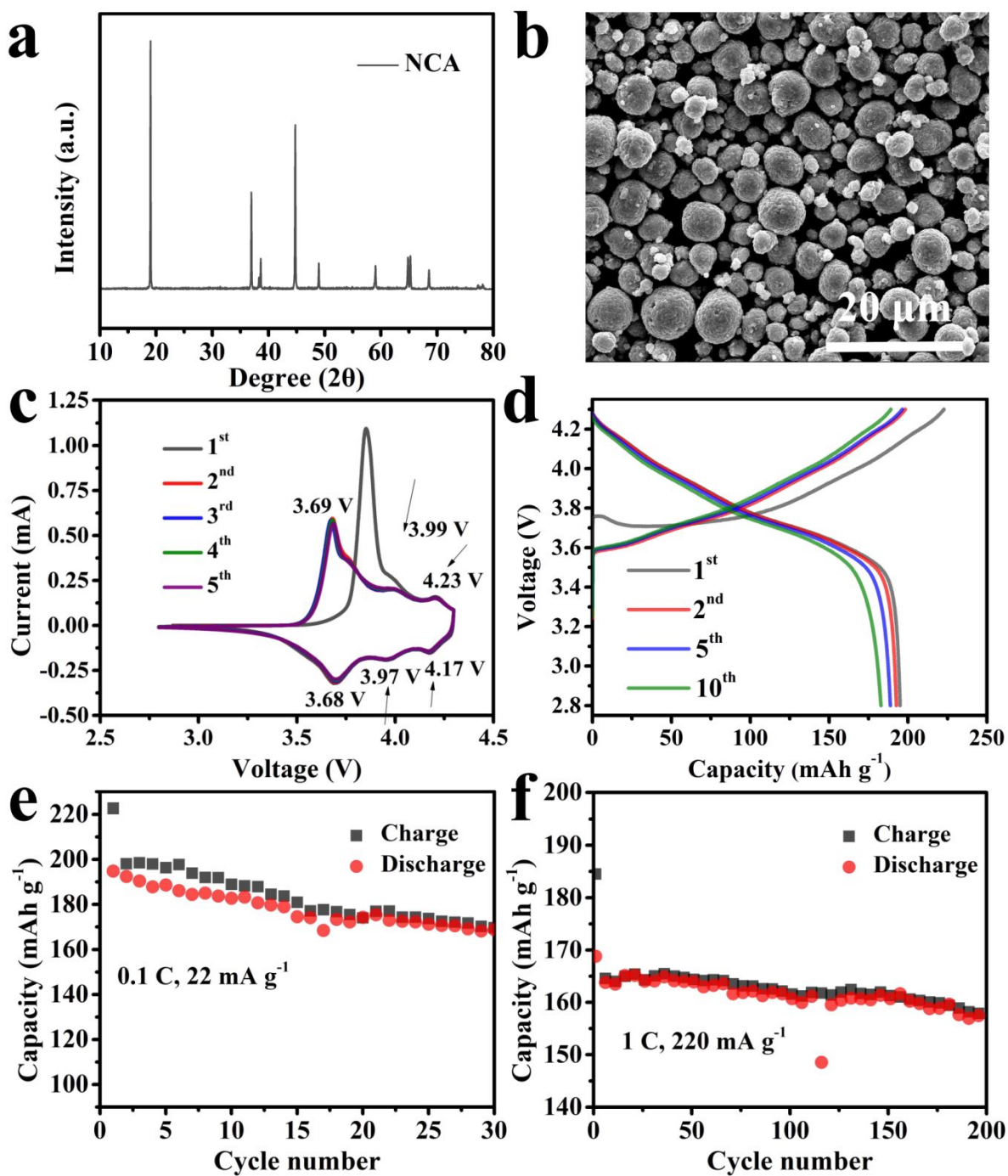


Figure S5. (a) XRD pattern, (b) SEM morphology, (c) CV curves, (d) discharge/charge profiles, and

(e, f) cyclic capacity of LiNi<sub>0.8</sub>Co<sub>0.15</sub>Al<sub>0.05</sub>O<sub>2</sub> cathode.

Table S1 The  $R_s$ ,  $R_{ct}$ ,  $R_f$  values of the EIS. Unit:  $\Omega$

Samples	$R_s$	$R_{ct}$	$R_f$	CPE <sub>p</sub>		PE <sub>ct</sub>		W (mMho*s <sup>0.5</sup> )
				Y <sub>o</sub> ( $\mu$ Mho*s <sup>N</sup> )	N	Y <sub>o</sub> ( $\mu$ Mho*s <sup>N</sup> )	N	
GeP@NC- <sub>0</sub>	1.32	66.2	91.4	30.0	0.692	482	0.66	1.47
GeP@NC- <sub>1</sub>	1.13	22.4	110	557	0.531	4.91	0.594	43.0
GeP@NC- <sub>2</sub>	1.03	0.55	145	7.99	0.605	8.04	0.260	100.1