

Efficient adsorption of anionic dyes by Ammoniated Waste

Polyacrylonitrile Fiber: Mechanism and Practicability

Manjun Lei ^{ab}, Lihui Yang^{ab}, Yifeng Shen^{ab}, Qiangqiang Zhao ^{ac}, Lei Yang^{ab}, Jie Sun,^{ab*}

^a Key Laboratory of Advance Textile Materials and Manufacturing Technology, Ministry of Education, College of Textiles Science and Engineering (International Institute of Silk), Zhejiang Sci-Tech University, Hangzhou 310018, Zhejiang, China

^b Engineering Research Center for Eco-Dyeing & Finishing of Textiles, Ministry of Education, College of Textiles Science and Engineering (International Institute of Silk), Zhejiang SciTech University, Hangzhou 310018, Zhejiang, China

^c Key Laboratory of Science & Technology of Eco-Textile, Ministry of Education, College of Chemistry, Chemical Engineering and Biotechnology, Donghua University, Shanghai 201620, China

Table S1. The Surface element content and atomic ratio of the PANF, PANAMF, PANABMF and PANQMF

Sample	Element content (%)				N/C	O/C
	C	N	O	Br	Mole ratio	Mole ratio
PANF	67.46	28.26	4.28	0	0.42	0.06
PANAMF	72.28	16.27	11.45	0	0.23	0.16
PANABMF	70.94	18.99	10.06	0	0.27	0.14
PANQMF	75.25	8.78	13.28	2.69	0.12	0.18

Table S2. The specific surface area of PANF, PANAMF, PANABMF and PANQMF

	PANF	PANAMF	PANABMF	PANQMF
BET specific surface area (m ² /g)	5.52	7.63	7.72	7.76

Table S3. weight gain (G_a %) and functional degree (mmol/g) of fiber adsorbent

Adsorbent	G _a (%)	Functional degree (mmol/g)	Adsorbent	G _a (%)	Functional degree (mmol/g)
PANAMF	8	0.726	PANABMF	3.4	0.318
	15.7	1.331		13.3	1.1511
	24	1.898		24	1.898
	28.6	2.18		29	2.204
	33.8	2.447		32.2	2.388
	43.6	2.977		40.6	2.831
PANABF	13.3	1.087			

Table S4. Absorbance-concentration curve equation of different dyes

$y=ax\pm b$	R ²
-------------	----------------

	a	b	
AR249	17.3834	0.0092	0.9993
DR31	33.7421	0.0234	0.9974
AY128	18.0315	0.0111	0.9995
RR195	20.7385	0.0054	0.9981

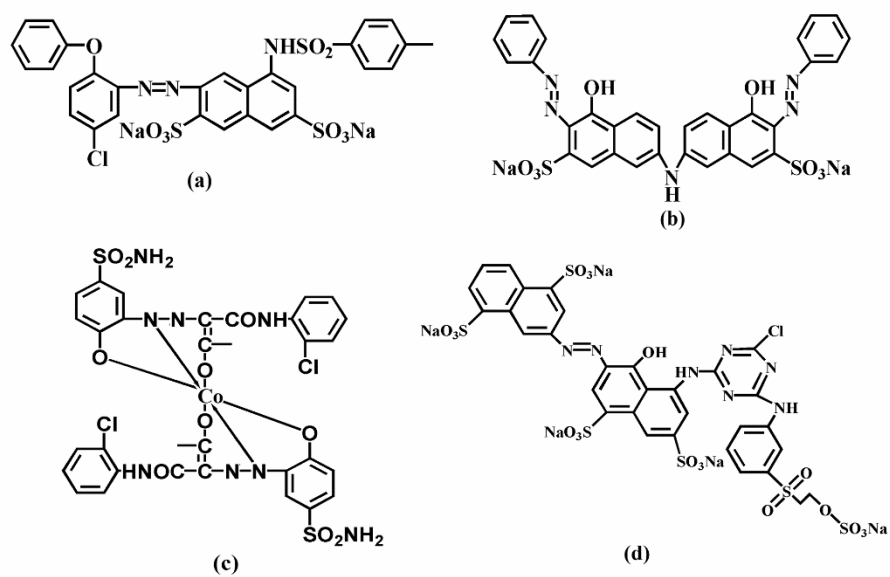
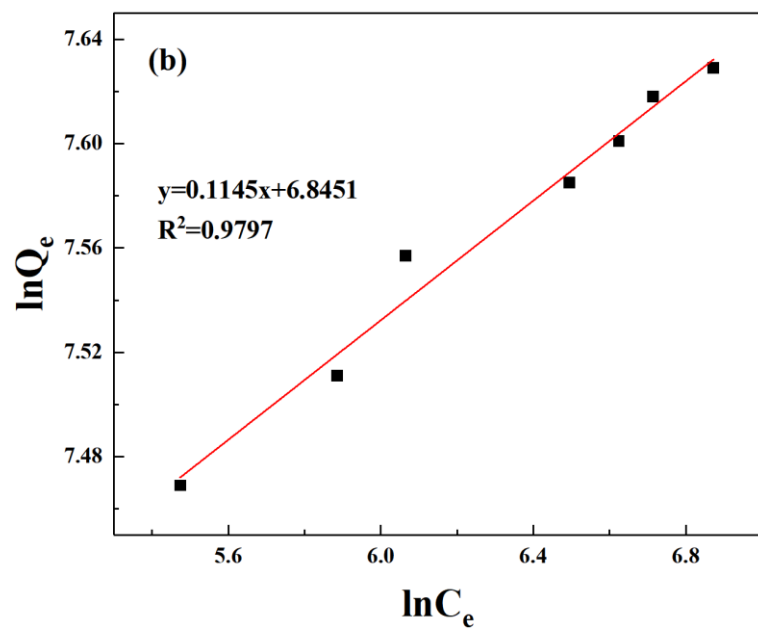
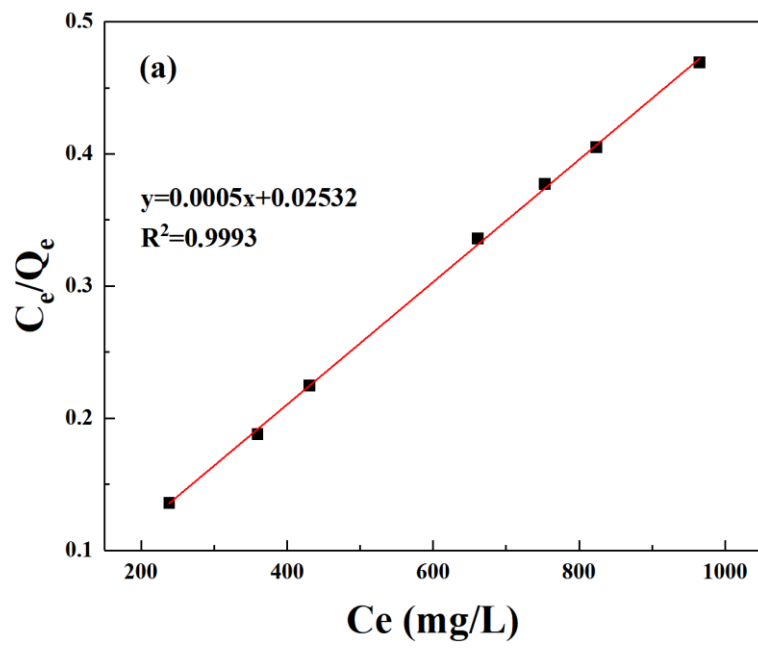


Figure. S1. Different dye structure of (a) AR249, (b) DR31, (c) AY128, (d) RR195



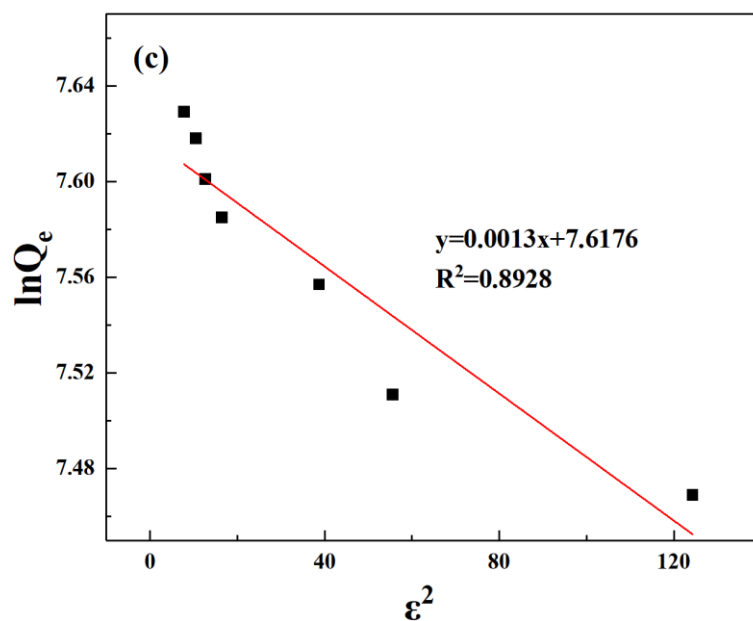


Fig.S2. Linear fitting of (a) Langmuir, (b) Freundlich and (c) D-R isotherm models for adsorption of AR249 on PANAMF

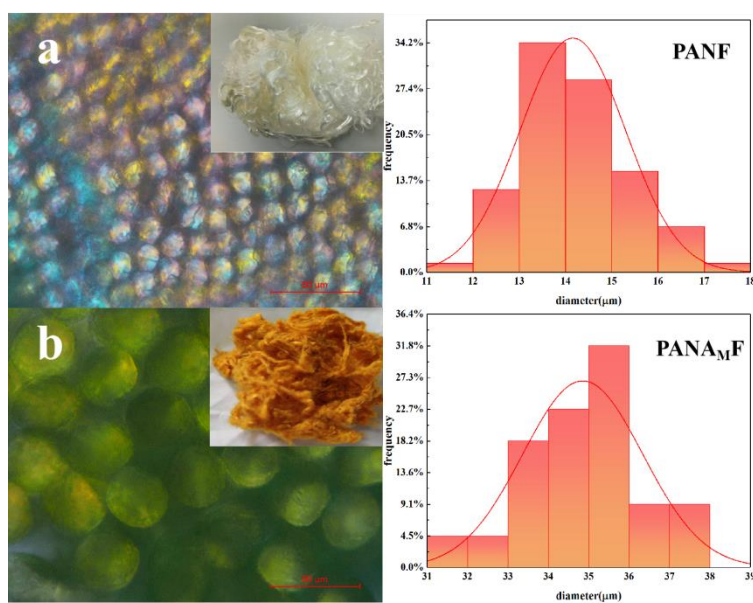


Figure. S3. Optical microscopic diameter of cross-section distribution (a) PANF, (b) PANAMF

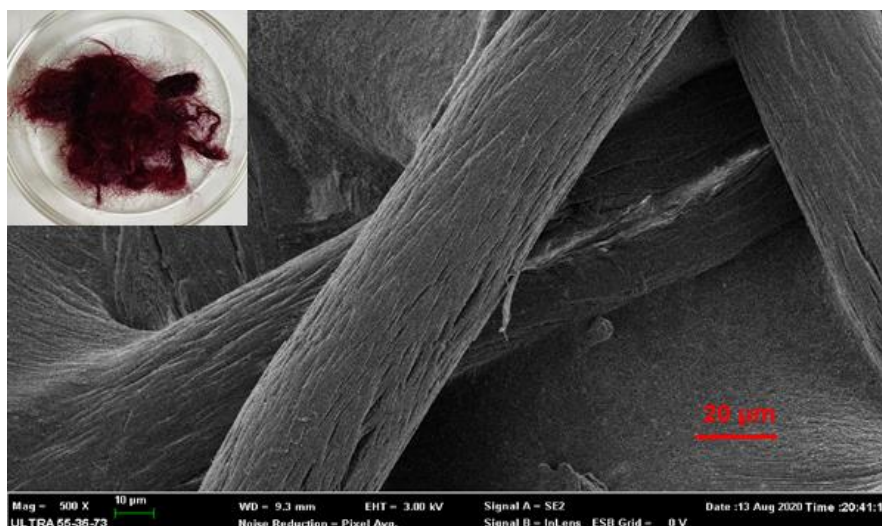


Fig.S4. The SEM of PAN_MF after eight cycles of adsorption

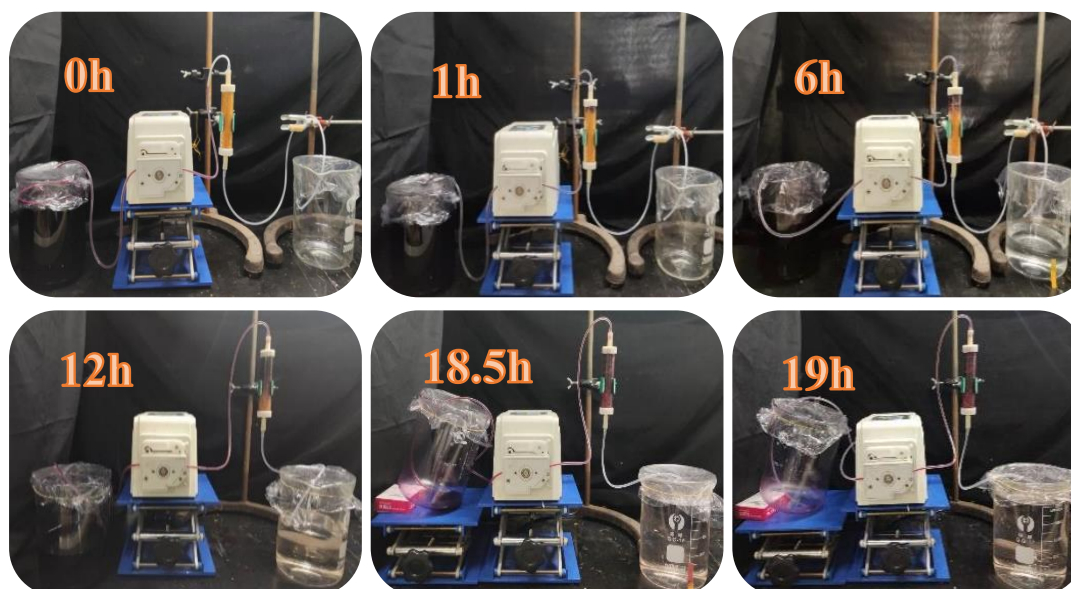


Fig.S5. Actual adsorption condition Magnified flow adsorption system of PAN_MF for the adsorption of AR249.

Table S5. PH and absorbance of the reservoir at different times.

	Time(h)									
	0	1	3	6	9	12	15	18.5	19	
absorbance	-	0.0001	0.0002	0.0006	0.001	0.0018	0.0042	0.008	0.008	
pH	-	7	7	7	6	3	3	3	3	