

Supporting Information

Direct Infusion Mass Spectrometric Analysis of Bio-Oil Using ESI-Ion Trap MS

Eid Alsbou and Bob Helleur*

Department of Chemistry, Memorial University of Newfoundland, St. John's, NL, A1B 3X7,
Canada.

Corresponding Author

*Eid Alsbou (ema785@mun.ca)

Table S1. MS methods that have been used in characterization of bio-oils.

| Ionization mode | Ion Mode | Mass analyzer | Sample | Ref |
|------------------------|-----------------|----------------------------------|--|------------|
| APCI | -ve | liner quadrupole Ion Trap (LQIT) | carbohydrates** | 13 |
| APPI | * | Liner ion trap-Orbitrap | toluene extract from Biochar** | 7 |
| ESI | +ve | liner quadrupole Ion Trap (LQIT) | model compounds from lignin degradation products** | 14 |
| | | Triple-quadrupole | Chicken manure | 9 |
| | +ve/-ve | Quadrupole | lignin | 11 |
| | | Quadrupole | lignin | 15 |
| | -ve | FT-ICR | pine and peanut hulls pellets | 3 |
| | | | red oak | 12 |
| | | | red pine | 2 |
| | | Liner ion trap-Orbitrap | Water/Methanol extract from Biochar** | 7 |
| | | liner quadrupole ION TRAP (LQIT) | carbohydrates** | 13 |
| | | liner quadrupole ION TRAP (LQIT) | model compounds from lignin degradation products** | 14 |
| | | Orbitrap | red oak | 12 |
| Q-TOF | red oak | 12 | | |
| FD | * | | | 10 |
| FI | * | Double focussing | Chicken manure | 10 |
| | | | pyrolytic lignin** | |
| LDI | * | Liner ion trap-Orbitrap | loblolly pine | 5 |
| | | TOF | pyrolytic lignin** | 6 |
| | +ve | Liner ion trap-Orbitrap | Toluene extract from Biochar** | 7 |
| MALDI | * | TOF | pyrolytic lignin** | 6 |

* N/A, **Not bio-oil sample.

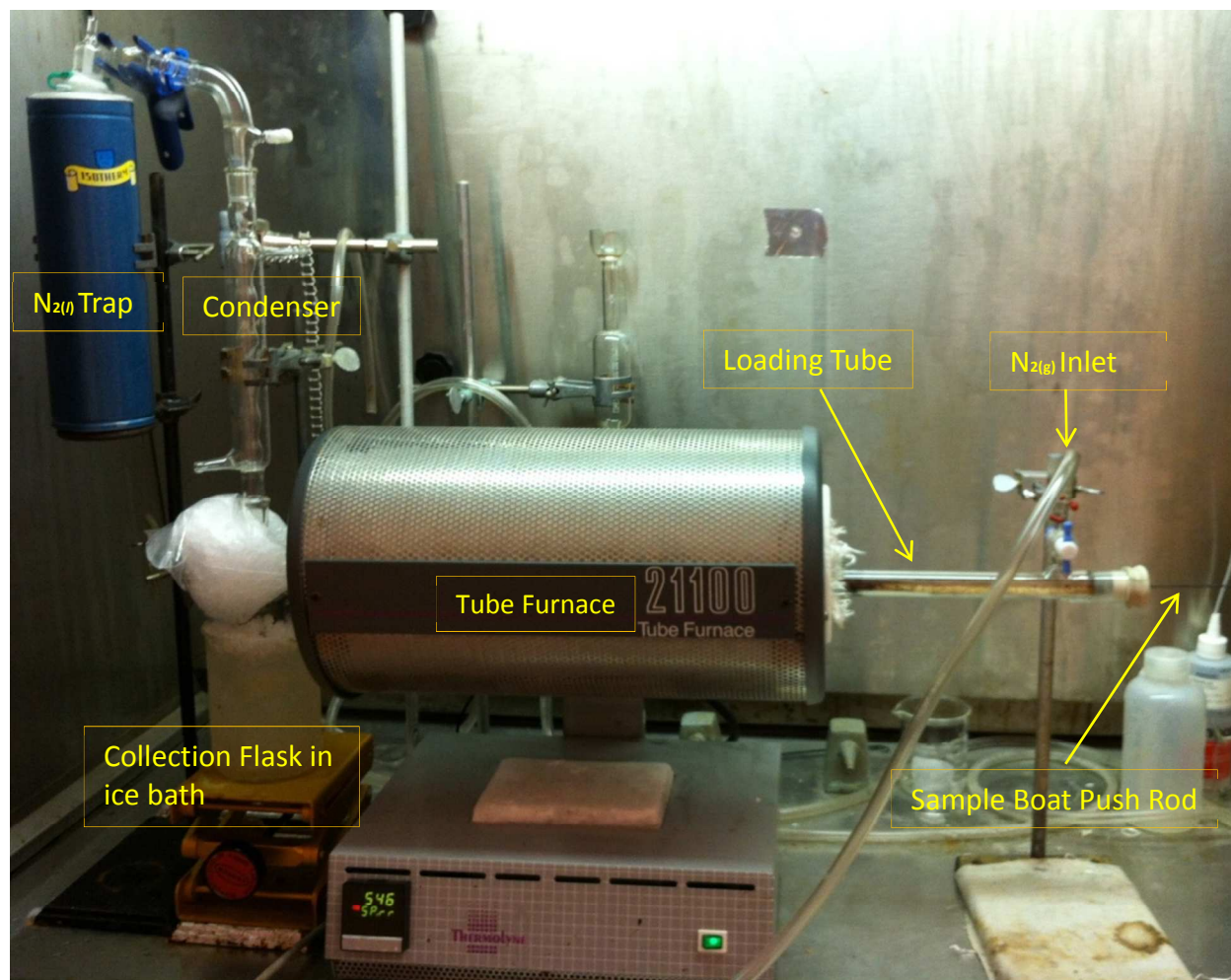


Figure S1. Small scale tube-furnace pyrolysis unit.

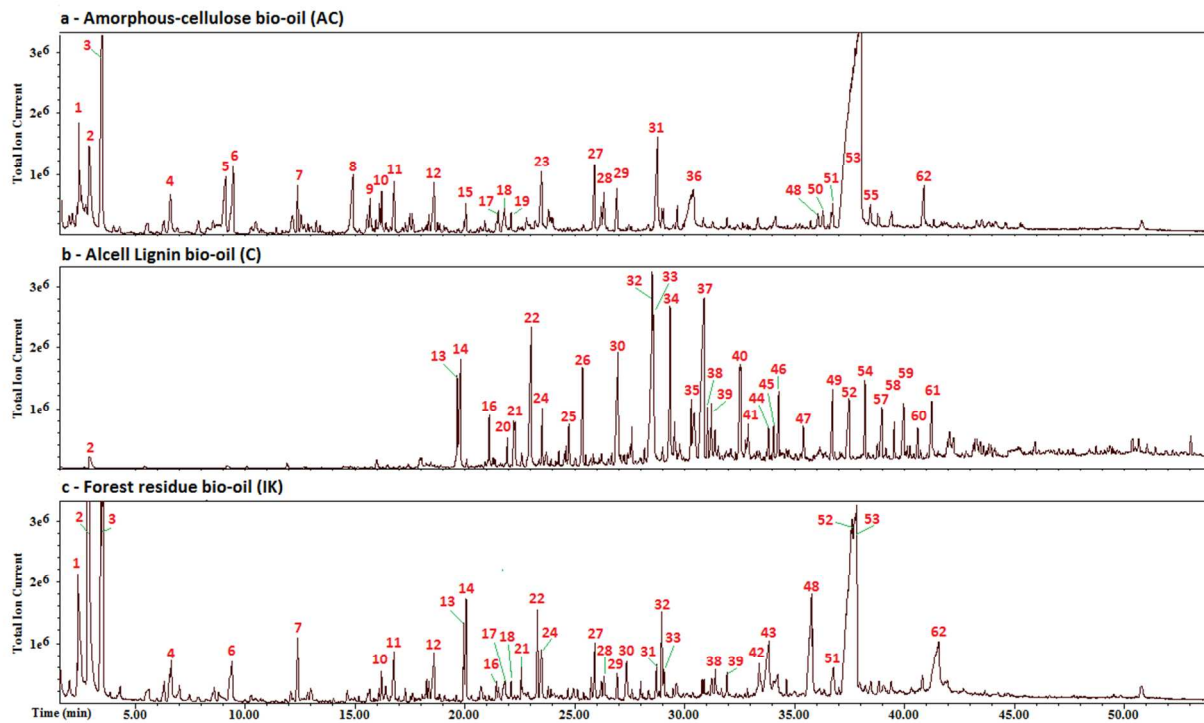


Figure S2. GC-MS: Individual products in bio-oils from a) cellulose, b) lignin and c) Forest residue.

Table S2. Products identified in bio-oil samples shown in Figure S2.

| | Bio-oil feedstock | Cellulose (C) | Alcell Lignin (L) | Forest residue (FR) |
|----------|--|----------------|-------------------|---------------------|
| Peak No. | Compound | detected peaks | | |
| 1 | 2-hydroxyacetaldehyde | * | | * |
| 2 | acetic acid | * | * | * |
| 3 | Hydroxypropanone | * | | * |
| 4 | propanoic acid | * | | * |
| 5 | Pyruvic acid | * | | |
| 6 | 2-furaldehyde | * | | * |
| 7 | Tetrahydro-4-pyrone | * | | * |
| 8 | 2-methyl-2-cyclopentene-1-one | * | | |
| 9 | 5-methyl-2-furaldehyde | * | | |
| 10 | 4-methyl-Cyclohexanol | * | | * |
| 11 | 2(5H)-Furanone | * | | * |
| 12 | 2-Cyclopenten-1-one, 2-hydroxy-3-methyl- | * | | * |
| 13 | Phenol | | * | * |
| 14 | Guaiacol | | * | * |
| 15 | 2,3-Dihydro-5-hydroxy-6-methyl-4H-pyran-4-one | * | | |
| 16 | phenol, 2-methyl | | * | * |
| 17 | 4H-Pyran-4-one, 3-hydroxy-2-methyl- | * | | * |
| 18 | 2,5-Furandicarboxaldehyde | * | | * |
| 19 | 2(3H)-Furanone, dihydro-3-methylene- | * | | |
| 20 | guaiacol, 3-methyl- | | * | * |
| 21 | phenol, 4-methyl- | | * | * |
| 22 | guaiacol, 4-methyl- | | * | * |
| 23 | 2,3 - dihydroxy - 1 - hexen - 4 - one | * | | |
| 24 | phenol, dimethyl- | | * | * |
| 25 | guaiacol, 4-ethyl- | | * | |
| 26 | guaiacol, dimethyl- | | * | |
| 27 | (1R)-1-hydroxy-3,6-dioxabicyclo[3.2.1]octan-2-one | * | | * |
| 28 | 3,4-anhydro-d-galactosan | * | | * |
| 29 | 1,4:3,6-dianhydro-a-d-glucopyranose | * | | * |
| 30 | 1,2-Benzenediol, 3-methoxy- | | * | * |
| 31 | 5-(Hydroxymethyl)-2-furanecarboxaldehyde | * | | * |
| 32 | 1,2-Benzenediol | * | * | * |
| 33 | Syringol | | * | * |
| 34 | 1,2-Benzenediol, 6-methoxy- | | * | |
| 35 | Isoeugenol | | * | |
| 36 | 2 - hydroxymethyl - 5 - hydroxy - 2,3 - dihydro - (4H) - pyran | * | | |
| 37 | syringol, 4-methyl- | | * | |
| 38 | Vanillin | | * | * |
| 39 | Hydroquinone | | * | * |

| | | | | |
|----|--|---|---|---|
| 40 | syringol, 4-ethyl- | | * | |
| 41 | Methyl vanillate | | * | |
| 42 | Acetoguaiacone | | | * |
| 43 | 1,6-Anhydro- β -d-talopyranose | * | | * |
| 44 | syringol, 4-vinyl- | | * | |
| 45 | Guaiacylacetone | | * | |
| 46 | syringol, 4-propanyl | | * | |
| 47 | syringol, 4-allyl- | | * | |
| 48 | 1,6-Anhydro- β -d-mannopyranose | * | | * |
| 49 | syringol, 4-propenyl | | * | |
| 50 | 1,6-dianhydro- α -d-galactofuranose | * | | |
| 51 | 3,4-Altrosan | * | | * |
| 52 | Syringaldehyde | | * | |
| 53 | Levoglucosan | * | | * |
| 54 | Unknown | | * | |
| 55 | 1,6-Anhydro- α -d-talopyranose | * | | * |
| 56 | Methyl syringate | | * | |
| 57 | acetosyringone | | * | |
| 58 | Unknown | | * | |
| 59 | syringyl acetone | | * | |
| 60 | propio - syringone | | * | |
| 61 | Unknown | | | |
| 62 | Unknown | * | | * |

Table S3. Model compound: Positive ion mode ESI MS, with and without dopants.

| # | Compound | Mwt (g/mol) | None | Formic Acid | NaCl | NH ₄ Cl |
|----|----------|-------------|--|---|---|---|
| 3 | LG | 162 | [M+Na] ⁺ (100%, 1.5e7), [2M+Na] ⁺ (10%) | [M+Na] ⁺ (100%, 7e6) [2M+Na] ⁺ (10%) | [M+Na] ⁺ (100%, 1.25e7), [2M+Na] ⁺ (10%) | [M+NH ₄] ⁺ (100%, 2.1e6), [M+Na] ⁺ (75%), [2M+Na] ⁺ (15%) |
| 4 | Glu | 180 | [M+Na] ⁺ (100%, 1.2e7), [2M+Na] ⁺ (20%) | [M+Na] ⁺ (100%, 9e6), [2M+Na] ⁺ (20%) | [M+Na] ⁺ (100%, 9e6), [2M+Na] ⁺ (15%) | [M+NH ₄] ⁺ (100%, 3e6), [M+Na] ⁺ (80%) [LG+NH ₄] ⁺ (40%), [LG+H] ⁺ (10%) |
| 5 | Cbio | 342.3 | [M+Na] ⁺ (100%, 1e6), [2M+Na] ⁺ (10%), [M+H] ⁺ (5%), [M-H ₂ O+H] ⁺ (70%) | [M+Na] ⁺ (5%), [M+H] ⁺ (10%), [M-H ₂ O+H] ⁺ (100%, 5e5). | [M+Na] ⁺ (100%, 2e6), [2M+Na] ⁺ (5%) | [M+NH ₄] ⁺ (100%, 2.5e6), [M+H] ⁺ (15%), [M-H ₂ O+H] ⁺ (90%) |
| 8 | G | 124 | [M+Na] ⁺ (100%, 2e5) | [M+Na] ⁺ (50%, 2e5), [M+H] ⁺ (25%) | [M+Na] ⁺ (100%, 3e5) | ND |
| 9 | S | 154 | [M+Na] ⁺ (100%, 3e7), [M+H] ⁺ (10%), [2M+Na] ⁺ (15%). | [M+Na] ⁺ (100%, 3e7), [M+H] ⁺ (15%), [2M+Na] ⁺ (10%). | [M+Na] ⁺ (100%, 4e7), [2M+Na] ⁺ (10%). | [M+H] ⁺ (100%, 1e7), [M+Na] ⁺ (50%) |
| 10 | V | 152 | [M+Na] ⁺ (100%, 1e7), [M+H] ⁺ (20%), [2M+Na] ⁺ (5%) | [M+Na] ⁺ (100%, 4.7e6), [M+H] ⁺ (95%) | [M+Na] ⁺ (100%, 2e7) | [M+H] ⁺ (100%, 6e6), [M+Na] ⁺ (5%) |

Table S4. Model compound: Negative ion mode ESI MS, with and without dopants.

| # | Compound | Mwt (g/mol) | None | NaOH | NH ₄ Cl |
|----|----------|-------------|---|---|---------------------------------|
| 3 | LG | 162 | [M-H] ⁻ (80%), [2M-H] ⁻ (100%, 6e5) | [M-H] ⁻ (100%, 5e5), [2M-H] ⁻ (50%) | [M+Cl] ⁻ (100%, 4e5) |
| 4 | Glu | 180 | [M-H] ⁻ (100%, 7e5), [2M-H] ⁻ (15%) | [M-H] ⁻ (100%, 4e5), [2M-H] ⁻ (25%) | [M+Cl] ⁻ (100%, 7e5) |
| 5 | Cbio | 342.3 | [M-H] ⁻ (95%), [LG-H] ⁻ (100%, 2e5), [Glu-H] ⁻ (15%) | [M-H] ⁻ (40%), [LG-H] ⁻ (100%, 7e5), [Glu-H] ⁻ (15%) | [M+Cl] ⁻ (100%, 8e5) |
| 8 | G | 124 | [M-H] ⁻ (100%, 1.4e4) | [M-H] ⁻ (100%, 4e4) | poor |
| 9 | S | 154 | [M-H] ⁻ (70%), [2M-H] ⁻ (100%, 1.6e5) | [M-H] ⁻ (50%, 2.5e5) | [M-H] ⁻ (40%, 1.5e4) |
| 10 | V | 152 | [M-H] ⁻ (100%, 1.4e6) | [M-H] ⁻ (100%, 1.6e6) | [M-H] ⁻ (100%, 1e6) |

Table S5. Tandem mass spectra in positive and negative modes for model compounds.

| Tandem mass spectra in negative mode for model compounds | | |
|---|---|--|
| Compound (m/z of [M-H] ⁻) | MS ² fragmentation (product ions' m/z) relative abundance | MS ³ fragmentations (product ions' m/z) relative abundance |
| Guaiacol (123) | 123-CH ₃ (108) 100% | |
| Vanilline (151) | 151-CH ₃ (136) 100% | 136-CO (108) 100% |
| | | 136-CO ₂ (96) 80% |
| Syringol (153) | 153-CH ₃ (138) 100% | 138-CH ₃ (123) 100% |
| | 153-CO (125) 5% | |
| Levogulcosan (161) | 161-H ₂ O (143) 40% | 143-H ₂ O (125) 30% |
| | | 143-CO (113) 100% |
| | | 143-CH ₂ O ₂ (97) 60% |
| | | 143-CH ₆ O ₂ (71) 50% |
| | 161-2H ₂ O (125) 5% | |
| | 161-CH ₄ O ₂ (113) 75% | 113-H ₂ O (95) 100% |
| | | 113-CO (85) 80% |
| | | 113-CH ₄ O (71) 20% |
| 161-C ₂ H ₄ O ₂ (101) 100% | | |
| 161-C ₃ H ₄ O ₃ (73) 40% | | |
| 161-C ₃ H ₆ O ₃ (71) 20% | | |
| Glucose (179) | 179-H ₆ O (161) 90% | 161-H ₂ O (143) 50% |
| | | 161-CH ₂ O (131) 40% |
| | | 161-2H ₂ O (125) 10% |
| | | 161-CH ₄ O ₂ (113) 100% |
| | | 161-C ₂ H ₄ O ₂ (101) 100% |
| | | 161-C ₃ H ₄ O ₃ (73) 40% |
| | 179-2H ₂ O (143) 100% | |
| | 179-CH ₂ O (149) 20% | |
| | 179-CH ₄ O ₂ (131) 50% | |
| | 179-C ₂ H ₄ O ₂ (119) 70% | 119-H ₂ O (101) 100% |
| | | 119-CH ₂ O (89) 10% |
| 179-CH ₆ O ₃ (113) 60% | | |
| 179-C ₂ H ₆ O ₃ (101) 20% | | |
| 179-C ₃ H ₆ O ₃ (89) 90% | | |
| Cellobiose (341) | 341-C ₆ H ₁₀ O ₅ (Glu, 179) 25% | 179-H ₆ O (161) 95% |
| | | 179-2H ₂ O (143) 100% |
| | | 179-CH ₂ O (149) 25% |
| | | 179-CH ₄ O ₂ (131) 50% |
| | | 179-C ₂ H ₄ O ₂ (119) 65% |
| | | 179-CH ₆ O ₃ (113) 60% |
| | | 179-C ₂ H ₆ O ₃ (101) 25% |
| | | 179-C ₃ H ₆ O ₃ (89) 80% |

| | | |
|---|--|--|
| | 341-C ₆ H ₁₂ O ₆ (LG, 161) 100% | 161-H ₂ O (143) 30% |
| | | 161-CH ₄ O ₂ (113) 75% |
| | | 161-C ₂ H ₄ O ₂ (101) 100% |
| | | 161-C ₃ H ₄ O ₃ (73) 40% |
| | 341-C ₇ H ₁₂ O ₆ (149) <5% | |
| | 341-C ₈ H ₁₆ O ₈ (101) <5% | |
| Tandem mass spectra in positive mode for model compounds | | |
| Compound (m/z of [M+Na] ⁺) | MS ² fragmentations (product ions' m/z) relative abundance | MS ³ fragmentations (product ions' m/z) relative abundance |
| Guaiacol (147) | 147 (100%), No fragments | |
| Vanilline (175) | (175) 100%, No fragments | |
| Syringol (177) | (177) 100%, No fragments | |
| Levogulcosan (185) | (185) 100%, No fragments | |
| Glucose (203) | (203) 25% | |
| | 203-H ₂ O (185) 20% | |
| | 203-C ₂ H ₄ O ₂ (143) 100% | |
| | 203-C ₃ H ₆ O ₃ (113) 10% | |
| Cellobiose (365) | 365-H ₂ O (347) 80% | 347-CH ₂ O (317) 60% |
| | | 347-C ₆ H ₈ O ₄ (Glu, 203) 100% |
| | | 347-C ₆ H ₁₀ O ₅ (LG, 185) 10% |
| | 365-CH ₂ O (335) <5% | |
| | 365-C ₂ H ₄ O ₂ (317) <5% | |
| | 365-C ₂ H ₄ O ₂ (305) 100% | 305-C ₂ H ₄ O ₂ (245) 100% |
| | 365-C ₄ H ₈ O ₄ (245) 10% | |
| | 365-C ₆ H ₁₀ O ₅ (Glu, 203) 20% | |
| 365-C ₆ H ₁₂ O ₆ (LG, 185) 10% | | |

Table S6. Negative mode MS² product ions resulting from ESI-Ion Trap MS of selected ions from the mass spectra of cellulose-bio-oil (C).

| m/z of parent ions in full mass spectra | m/z values of product ions | | | | | | | | | | | | | | | | |
|---|----------------------------|-----|-----|-----|-----|-----|-----|-----|-----|-----|-----|-----|-----|-----|-----|-----|-----|
| | Relative ion abundance (%) | | | | | | | | | | | | | | | | |
| 161 | 143 | 129 | 127 | 113 | 101 | 97 | | | | | | | | | | | |
| | 25 | 25 | 50 | 95 | 100 | 20 | | | | | | | | | | | |
| 173 | 155 | 145 | 141 | 129 | 113 | 111 | 97 | | | | | | | | | | |
| | 5 | 20 | 100 | 80 | 10 | 10 | 80 | | | | | | | | | | |
| 177 | 159 | 149 | 143 | 139 | 133 | 131 | 117 | 115 | | | | | | | | | |
| | 40 | 100 | 18 | 10 | 30 | 30 | 15 | 20 | | | | | | | | | |
| 191 | 173 | 171 | 163 | 157 | 147 | 135 | 131 | 113 | | | | | | | | | |
| | 10 | 10 | 100 | 40 | 50 | 10 | 20 | 20 | | | | | | | | | |
| 197 | 179 | 165 | 153 | 151 | 135 | 125 | 121 | 109 | 97 | | | | | | | | |
| | 40 | 40 | 100 | 30 | 10 | 15 | 15 | 20 | <5 | | | | | | | | |
| 205 | 185 | 177 | 171 | 161 | 159 | 145 | 127 | 115 | | | | | | | | | |
| | 15 | 15 | 25 | 50 | 30 | 100 | 10 | 15 | | | | | | | | | |
| 213 | 195 | 181 | 169 | 151 | 127 | 87 | | | | | | | | | | | |
| | 10 | 10 | 100 | 60 | 20 | 70 | | | | | | | | | | | |
| 221 | 203 | 191 | 187 | 177 | 175 | 161 | 145 | | | | | | | | | | |
| | 25 | 25 | 30 | 100 | 20 | 40 | 30 | | | | | | | | | | |
| 235 | 217 | 215 | 205 | 203 | 191 | 189 | 175 | 161 | 145 | 137 | 125 | 115 | | | | | |
| | 20 | 20 | 20 | 25 | 100 | 70 | 15 | 20 | 20 | 15 | 15 | 20 | | | | | |
| 237 | 219 | 217 | 205 | 193 | 191 | 177 | 175 | 163 | 161 | | | | | | | | |
| | 20 | 15 | 50 | 50 | 100 | 20 | 20 | 20 | 25 | | | | | | | | |
| 251 | 233 | 218 | 207 | 191 | 177 | 163 | 161 | 149 | 139 | 123 | 113 | | | | | | |
| | 50 | 85 | 90 | 25 | 100 | 20 | 10 | 50 | 15 | 15 | 5 | | | | | | |
| 263 | 245 | 243 | 233 | 231 | 229 | 219 | 217 | 203 | 191 | 175 | 173 | 161 | 145 | 135 | 133 | 123 | 115 |
| | 10 | 30 | 30 | 30 | 100 | 40 | 70 | 35 | 15 | 15 | 15 | 45 | 30 | 30 | 10 | 5 | 10 |
| 277 | 259 | 257 | 247 | 245 | 243 | 233 | 231 | 215 | 203 | 189 | 177 | 161 | 153 | 145 | | | |
| | 30 | 40 | 25 | 25 | 40 | 45 | 100 | 15 | 30 | 10 | 10 | 40 | 30 | 30 | | | |
| 279 | 261 | 259 | 247 | 245 | 235 | 233 | 217 | 215 | 205 | 191 | 179 | 161 | 145 | | | | |
| | 60 | 50 | 100 | 40 | 40 | 90 | 20 | 20 | 20 | 20 | 20 | 40 | 15 | | | | |
| 293 | 289 | 275 | 273 | 263 | 261 | 259 | 255 | 249 | 247 | 231 | 229 | 219 | 203 | 191 | 179 | 167 | 161 |
| | 50 | 40 | 80 | 20 | 70 | 75 | 25 | 75 | 100 | 30 | 30 | 40 | 30 | 20 | 25 | 75 | 60 |
| 307 | 289 | 275 | 263 | 247 | 234 | 219 | 205 | 191 | 161 | 145 | 133 | 115 | 101 | | | | |
| | 30 | 50 | 40 | 10 | 10 | 10 | 10 | 10 | 100 | 10 | 10 | 10 | 5 | | | | |
| 323 | 305 | 303 | 301 | 291 | 289 | 279 | 277 | 265 | 245 | 219 | 203 | 179 | 161 | 145 | | | |
| | 40 | 35 | 40 | 50 | 100 | 35 | 40 | 80 | 40 | 35 | 20 | 20 | 60 | 5 | | | |
| 335 | 317 | 305 | 289 | 275 | 261 | 245 | 233 | 217 | 205 | 177 | 161 | 143 | 131 | 113 | 101 | | |
| | 15 | 40 | 30 | 10 | 20 | 10 | 10 | 10 | 10 | 10 | 100 | 15 | 10 | 5 | 5 | | |
| 353 | 335 | 321 | 309 | 295 | 277 | 249 | 219 | 205 | 189 | 161 | 149 | 131 | 115 | | | | |
| | 40 | 10 | 90 | 30 | 20 | 20 | 15 | 15 | 15 | 40 | 20 | 10 | 5 | | | | |

| | | | | | | | | | | | | | | | | | | |
|-----|-----|-----|-----|-----|-----|-----|-----|-----|-----|-----|-----|-----|-----|-----|-----|-----|-----|-----|
| 287 | 269 | 267 | 255 | 253 | 225 | 211 | 185 | 169 | 139 | | | | | | | | | |
| | 20 | 20 | 100 | 80 | 5 | 5 | 15 | 5 | 5 | | | | | | | | | |
| 281 | 263 | 249 | 245 | 231 | 221 | 213 | 203 | 189 | 175 | 161 | 143 | 129 | 117 | 101 | | | | |
| | 90 | 100 | 80 | 40 | 20 | 20 | 20 | 20 | 20 | 20 | 30 | 5 | 5 | 5 | | | | |
| 289 | 271 | 257 | 239 | 225 | | | | | | | | | | | | | | |
| | 25 | 100 | 5 | 5 | | | | | | | | | | | | | | |
| 301 | 283 | 269 | 251 | 241 | 227 | 209 | 199 | 185 | 173 | 157 | | | | | | | | |
| | 40 | 100 | 10 | 10 | 10 | 10 | 10 | 30 | 5 | 5 | | | | | | | | |
| 317 | 299 | 285 | 267 | 257 | 243 | 225 | 207 | 173 | | | | | | | | | | |
| | 30 | 100 | <5 | <5 | <5 | <5 | <5 | <5 | | | | | | | | | | |
| 331 | 313 | 299 | 281 | 271 | 257 | 239 | 229 | 205 | 185 | | | | | | | | | |
| | 20 | 100 | <5 | <5 | <5 | <5 | <5 | <5 | 10 | | | | | | | | | |
| 343 | 325 | 311 | 307 | 293 | 283 | 261 | 251 | 233 | 215 | 201 | 185 | 163 | 145 | | | | | |
| | 566 | 298 | <5 | <5 | <5 | <5 | <5 | <5 | <5 | <5 | 5 | <5 | <5 | | | | | |
| 347 | 329 | 327 | 315 | 313 | 297 | 287 | 261 | 245 | 231 | 219 | 201 | 191 | 185 | 167 | 165 | 151 | 127 | 111 |
| | 80 | 100 | 80 | 100 | 40 | 30 | 20 | 20 | 20 | 30 | 25 | 20 | 40 | 10 | 10 | 5 | 5 | 5 |
| 359 | 341 | 327 | 297 | 297 | 259 | 241 | 231 | 213 | 197 | 185 | 173 | 149 | 127 | | | | | |
| | 30 | 100 | <5 | <5 | <5 | <5 | <5 | <5 | <5 | 20 | <5 | <5 | <5 | | | | | |
| 365 | 361 | 359 | 347 | 345 | 333 | 331 | 329 | 301 | 259 | 225 | 303 | 195 | 185 | | | | | |
| | 5 | 5 | 25 | 100 | 10 | <5 | <5 | <5 | <5 | <5 | <5 | <5 | 20 | | | | | |
| 401 | 383 | 369 | 341 | 327 | 299 | 285 | 257 | 243 | 225 | 210 | 173 | 158 | 186 | | | | | |
| | 25 | 100 | 10 | 10 | 10 | <5 | <5 | <5 | <5 | <5 | <5 | <5 | <5 | | | | | |
| 413 | 407 | 395 | 393 | 391 | 381 | 379 | 377 | 351 | 301 | 281 | 249 | 185 | | | | | | |
| | 40 | 20 | 20 | 60 | 45 | 100 | 60 | 20 | 25 | 25 | 15 | 20 | | | | | | |

Table S8. Negative mode MS² product ions resulting from ESI-Ion Trap MS of selected ions from the mass spectra of Lignin-bio-oil (L)

| m/z of parent ions in full mass spectra | m/z values of product ions | | | | | | | | | | | | | | | | | | |
|---|----------------------------|-----|-----|-----|-----|-----|-----|-----|-----|-----|-----|-----|-----|-----|-----|-----|-----|-----|----|
| | Relative ion abundance (%) | | | | | | | | | | | | | | | | | | |
| 123 | 108 | | | | | | | | | | | | | | | | | | |
| | 100 | | | | | | | | | | | | | | | | | | |
| 137 | 122 | 109 | 93 | | | | | | | | | | | | | | | | |
| | 100 | 25 | 60 | | | | | | | | | | | | | | | | |
| 151 | 136 | 123 | 107 | | | | | | | | | | | | | | | | |
| | 100 | <5 | 5 | | | | | | | | | | | | | | | | |
| 165 | 150 | 137 | 121 | | | | | | | | | | | | | | | | |
| | 100 | 20 | 40 | | | | | | | | | | | | | | | | |
| 167 | 152 | 137 | 135 | 123 | | | | | | | | | | | | | | | |
| | 100 | 20 | 30 | 20 | | | | | | | | | | | | | | | |
| 181 | 166 | 149 | 137 | | | | | | | | | | | | | | | | |
| | 100 | 99 | 20 | | | | | | | | | | | | | | | | |
| 195 | 180 | 178 | 163 | 161 | 151 | 149 | 136 | 123 | | | | | | | | | | | |
| | 100 | 50 | 80 | 25 | 20 | 25 | 5 | <5 | | | | | | | | | | | |
| 197 | 182 | 180 | 165 | 163 | 153 | 138 | 121 | | | | | | | | | | | | |
| | 100 | 40 | 95 | 50 | 50 | 20 | 10 | | | | | | | | | | | | |
| 209 | 194 | 192 | 177 | 165 | 163 | 150 | 137 | | | | | | | | | | | | |
| | 100 | 30 | 75 | 40 | 40 | <5 | <5 | | | | | | | | | | | | |
| 241 | 226 | 223 | 213 | 209 | 208 | 197 | 196 | 185 | 153 | 121 | 110 | 95 | | | | | | | |
| | 65 | 50 | 20 | 50 | 100 | 40 | 40 | 45 | 20 | 10 | 50 | 20 | | | | | | | |
| 255 | 253 | 251 | 240 | 239 | 238 | 237 | 235 | 227 | 223 | 221 | 211 | 209 | 193 | 185 | 166 | 152 | 139 | 111 | 95 |
| | 40 | 100 | 80 | 40 | 75 | 45 | 50 | 30 | 95 | 90 | 70 | 70 | 20 | 25 | 20 | 10 | <5 | 50 | <5 |
| 293 | 289 | 276 | 273 | 259 | 247 | 232 | 219 | 189 | 167 | 153 | | | | | | | | | |
| | 100 | 30 | 25 | 35 | 60 | 10 | 15 | 40 | <5 | <5 | | | | | | | | | |
| 311 | 294 | 291 | 277 | 265 | 247 | 233 | 209 | 195 | 185 | 171 | | | | | | | | | |
| | 100 | 95 | 75 | 50 | 15 | 20 | 20 | 20 | 15 | 10 | | | | | | | | | |
| 317 | 302 | 300 | 285 | 283 | 273 | 271 | 257 | 241 | 191 | 179 | 163 | 149 | 137 | | | | | | |
| | 50 | 100 | 50 | 85 | 40 | 50 | 20 | 25 | 10 | 15 | 40 | 30 | 20 | | | | | | |
| 325 | 310 | 308 | 295 | 293 | 291 | 279 | 255 | 247 | | | | | | | | | | | |
| | 15 | 100 | 15 | 15 | 70 | 50 | 20 | 15 | | | | | | | | | | | |
| 339 | 324 | 322 | 319 | 309 | 307 | 305 | 293 | 275 | 261 | 247 | >> | | | | | | | | |
| | 20 | 100 | 20 | 30 | 30 | 90 | 60 | 25 | 30 | 25 | <5 | | | | | | | | |
| 345 | 330 | 328 | 315 | 313 | 311 | 301 | 299 | 281 | 269 | 241 | 231 | 219 | 205 | 191 | 179 | 163 | | | |
| | 40 | 100 | 20 | 50 | 70 | 40 | 70 | 20 | 20 | 20 | 20 | 15 | 20 | 35 | 35 | 20 | | | |

| | | | | | | | | | | | | | | | | | | |
|---------|-----|-----|-----|-----|-----|-----|-----|-----|-----|-----|-----|-----|-----|-----|-----|-----|-----|--|
| | 100 | | | | | | | | | | | | | | | | | |
| 269 | 237 | 235 | 163 | | | | | | | | | | | | | | | |
| | 100 | 95 | 10 | | | | | | | | | | | | | | | |
| 283 | 251 | 249 | | | | | | | | | | | | | | | | |
| | 100 | 30 | | | | | | | | | | | | | | | | |
| 301 | 283 | 269 | 240 | 237 | 191 | 177 | | | | | | | | | | | | |
| | 25 | 100 | 20 | 25 | 30 | 30 | | | | | | | | | | | | |
| 331 | 313 | 299 | 298 | 297 | 205 | 191 | 177 | 167 | | | | | | | | | | |
| | 5 | 10 | 10 | 100 | 10 | 15 | 50 | 15 | | | | | | | | | | |
| 345 | 327 | 325 | 313 | 312 | 311 | 207 | 191 | 177 | | | | | | | | | | |
| | <5 | <5 | 10 | 5 | 20 | 5 | 100 | 30 | | | | | | | | | | |
| 345 | 327 | 325 | 313 | 311 | 297 | 283 | 219 | 205 | 191 | 189 | 177 | 175 | 167 | | | | | |
| | 15 | 30 | 15 | 30 | 20 | 20 | 10 | 10 | 100 | 20 | 35 | 50 | 20 | | | | | |
| 359 | 344 | 342 | 341 | 339 | 327 | 325 | 205 | 191 | 189 | 177 | | | | | | | | |
| | <5 | <5 | <5 | <5 | 5 | 5 | 30 | 100 | 10 | | | | | | | | | |
| 359 | 341 | 325 | 311 | 297 | 233 | 219 | 205 | 207 | 191 | 189 | 175 | | | | | | | |
| | 20 | 20 | 10 | 10 | 10 | 10 | 30 | 25 | 100 | 35 | 20 | | | | | | | |
| 359>191 | 191 | 174 | 131 | 121 | 105 | | | | | | | | | | | | | |
| | 100 | 30 | 30 | 10 | 10 | | | | | | | | | | | | | |
| 373 | 355 | 341 | 339 | 219 | 217 | 205 | 203 | 191 | 189 | 177 | | | | | | | | |
| | | 15 | 15 | 20 | 30 | 100 | 30 | 90 | 20 | 15 | | | | | | | | |
| 391 | 373 | 371 | 357 | 235 | 221 | 205 | 191 | 177 | | | | | | | | | | |
| | 10 | 10 | 50 | 50 | 70 | 70 | 100 | 30 | | | | | | | | | | |
| 401 | 384 | 383 | 369 | 367 | 355 | 339 | 325 | 247 | 245 | 233 | 231 | 219 | 217 | 205 | 204 | 191 | 175 | |
| | 20 | 20 | 25 | 25 | 10 | 10 | 10 | 20 | 30 | 90 | 70 | 70 | 70 | 100 | 65 | 70 | 20 | |
| 413 | 395 | 381 | 379 | 339 | 301 | 287 | 257 | 243 | 229 | 217 | 205 | 191 | 175 | | | | | |
| | 15 | 40 | 40 | 10 | 20 | 5 | 60 | 100 | 40 | 50 | 40 | 50 | 20 | | | | | |

| | | | | | | | | | | | | | | |
|------------|-----|-----|-----|-----|-----|-----|-----|-----|-----|-----|-----|-----|-----|--|
| 199 | 181 | 167 | 153 | 139 | 125 | 111 | 97 | | | | | | | |
| | 50 | 100 | 10 | 5 | 10 | 5 | 5 | | | | | | | |
| 201 | 183 | 181 | 169 | 167 | 153 | 139 | 125 | | | | | | | |
| | 20 | 25 | 100 | 60 | 5 | 5 | 5 | | | | | | | |
| 215 | 197 | 183 | 155 | 137 | 127 | | | | | | | | | |
| | 20 | 100 | <5 | <5 | <5 | | | | | | | | | |
| 227 | 209 | 195 | 191 | 181 | 167 | 152 | 109 | 98 | | | | | | |
| | 50 | 100 | 10 | 5 | 10 | <5 | <5 | <5 | | | | | | |
| 247 | 229 | 228 | 215 | 214 | 197 | 186 | 172 | 154 | 137 | 123 | 112 | | | |
| | 30 | 50 | 95 | 100 | 5 | 10 | 5 | 70 | 10 | 5 | 20 | | | |
| 259 | 241 | 240 | 227 | 226 | 208 | 195 | 185 | 145 | 151 | 140 | 122 | 95 | | |
| | 60 | 70 | 80 | 100 | 10 | 15 | 10 | 15 | 25 | 10 | 5 | 5 | | |
| 273 | 255 | 254 | 241 | 240 | 222 | 212 | 198 | 181 | 155 | 140 | 121 | 112 | 100 | |
| | 50 | 70 | 100 | 95 | 10 | 20 | 5 | 5 | 10 | 5 | 10 | 5 | 5 | |
| 301 | 283 | 282 | 269 | 268 | 255 | 237 | 227 | 215 | 199 | 187 | 176 | 150 | 136 | |
| | 50 | 30 | 100 | 70 | <5 | <5 | <5 | <5 | <5 | 35 | <5 | <5 | <5 | |
| 301 | 283 | 282 | 281 | 280 | 269 | 268 | 267 | 253 | 227 | | | | | |
| | 25 | 25 | 50 | 25 | 80 | 40 | 100 | 10 | 20 | | | | | |
| 315 | 297 | 296 | 283 | 282 | 269 | 255 | 227 | 205 | 187 | 176 | 164 | 151 | 137 | |
| | 40 | 50 | 100 | 60 | <5 | <5 | <5 | <5 | <5 | <5 | <5 | <5 | <5 | |
| 347 | 343 | 329 | 327 | 315 | 313 | 185 | 163 | | | | | | | |
| | 20 | 10 | 15 | 35 | 100 | 10 | 20 | | | | | | | |
| 379 | 361 | 360 | 359 | 358 | 357 | 356 | 345 | 317 | 275 | 215 | 185 | | | |
| | 50 | 40 | 90 | 40 | 70 | 50 | 100 | 20 | 20 | 25 | 25 | | | |