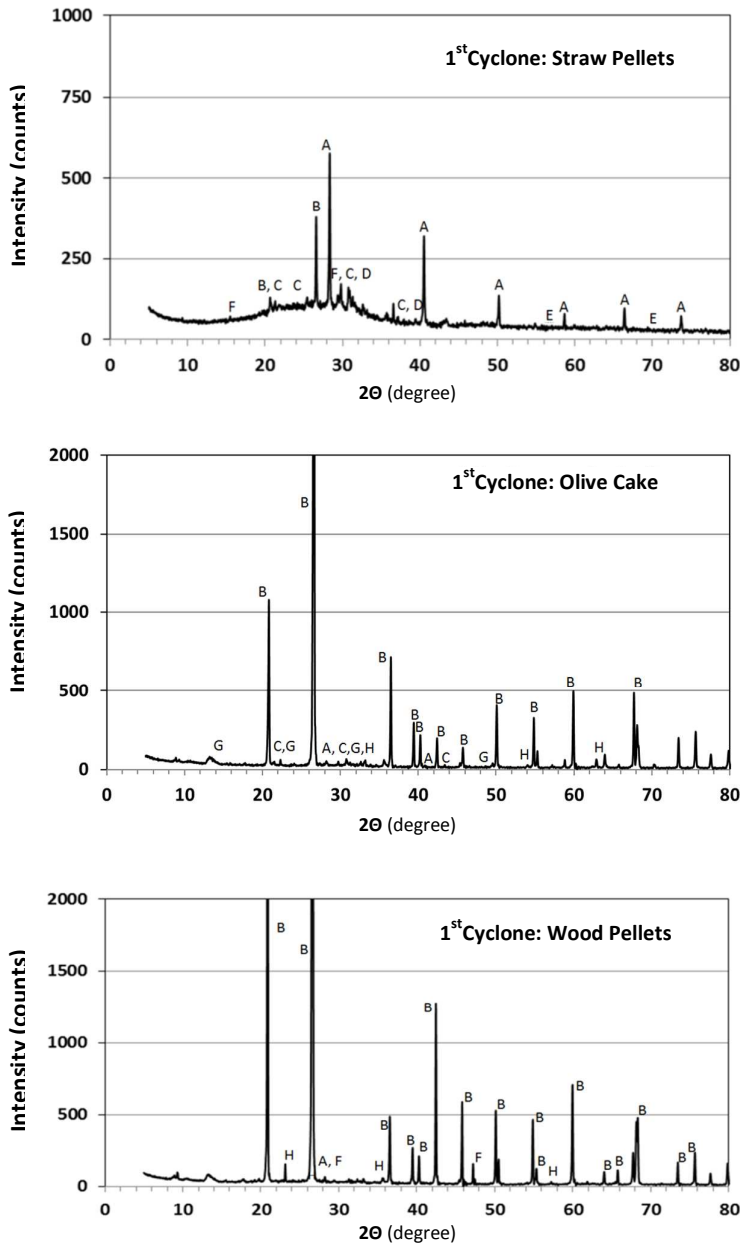


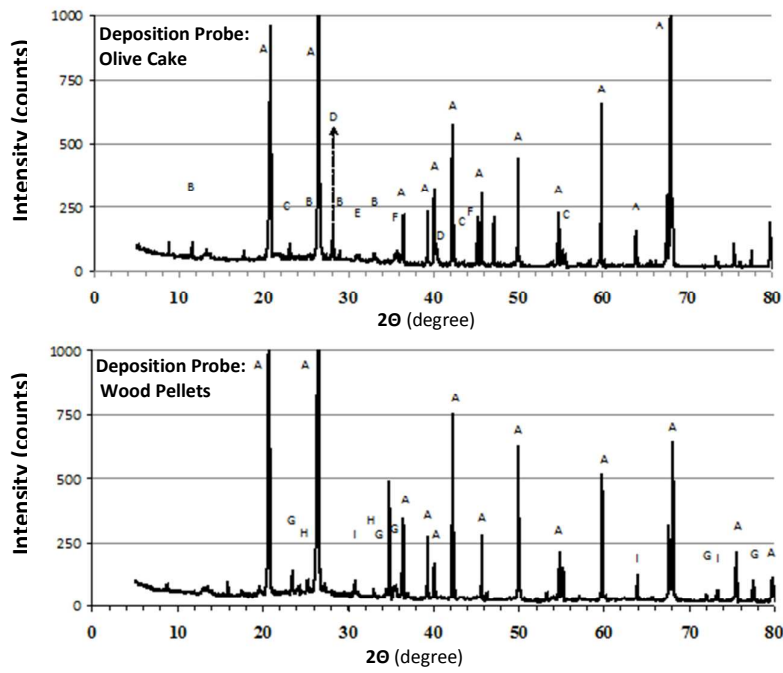
## Supporting Information File

### Appendix A – X Ray Diffractogram



A: KCl B: SiO<sub>2</sub> C: K<sub>2</sub>SO<sub>4</sub> D: K<sub>3</sub>PO<sub>4</sub> E: NaCl F: CaCO<sub>3</sub> G: K<sub>2</sub>Si<sub>4</sub>O<sub>4</sub> H: Fe<sub>2</sub>O<sub>3</sub>

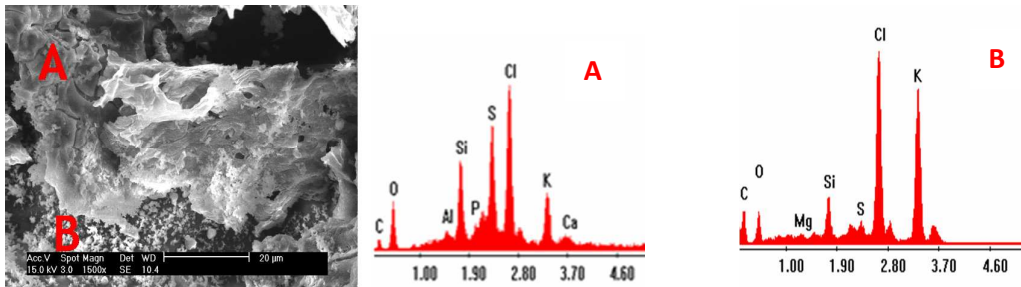
**Figure A-1.** X Ray diffractogram of the 1<sup>st</sup> cyclone fly ashes formed during the straw pellets, olive cake and wood pellets mono combustion tests



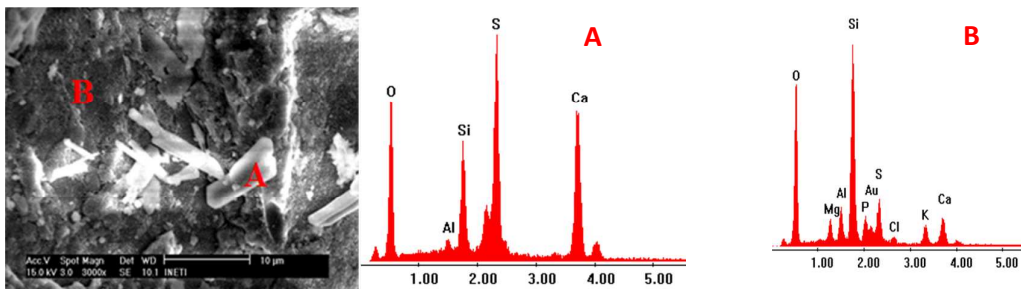
A-SiO<sub>2</sub> B-CaSO<sub>4</sub>·2H<sub>2</sub>O C-K<sub>2</sub>SO<sub>4</sub> D-KCl E-K<sub>3</sub>PO<sub>4</sub> F-K<sub>2</sub>S<sub>2</sub>O<sub>3</sub> G-Fe<sub>2</sub>O<sub>3</sub> H-CaSO<sub>4</sub> I-KOH

**Figure A-2.** X Ray diffractogram of the particles collected on the deposition probe during the olive cake and wood pellets mono-combustion <sup>42</sup>

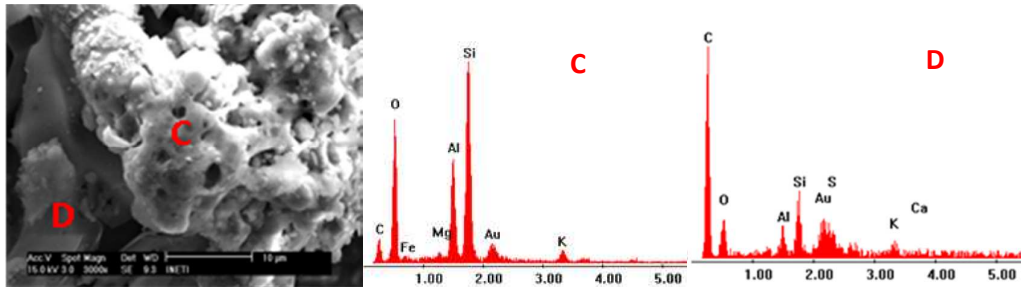
**Appendix B – Scanning Electronic Microscopy – Energy Dispersive Spectroscopy (SEM-EDS)**



**Figure B-1.** SEM-EDS of particles collected from the deposit probe during the straw pellets mono combustion



**Figure B-2.** SEM-EDS of particles collected from the deposit probe during the olive cake mono combustion



**Figure B-3.** SEM-EDS of particles collected from the deposit probe during the 15 % of olive cake with 85 % of Colombian coal