

Supplementary Information:  
Site-Specific DNA-Doxorubicin Conjugates Display Cell-Specific  
Cytotoxicity to Breast Cancer Cells

Christopher H. Stuart<sup>†,‡</sup>, David A. Horita<sup>§</sup>, Michael J. Thomas<sup>§</sup>, Freddie R. Salsbury Jr<sup>□</sup>,  
Mark O. Lively<sup>§</sup>, William H. Gmeiner<sup>†,‡\*</sup>

<sup>†</sup>Department of Cancer Biology, <sup>‡</sup>Department of Molecular Medicine and Translation Science, Wake Forest School of Medicine, <sup>§</sup>Department of Biochemistry, Wake Forest School of Medicine, Winston-Salem, NC 27157, and <sup>□</sup>Department of Physics, Wake Forest University, Winston-Salem, NC 27109

\*Address correspondence to this author at:

Phone: (336) 716-6216

Fax: (336) 716-0255

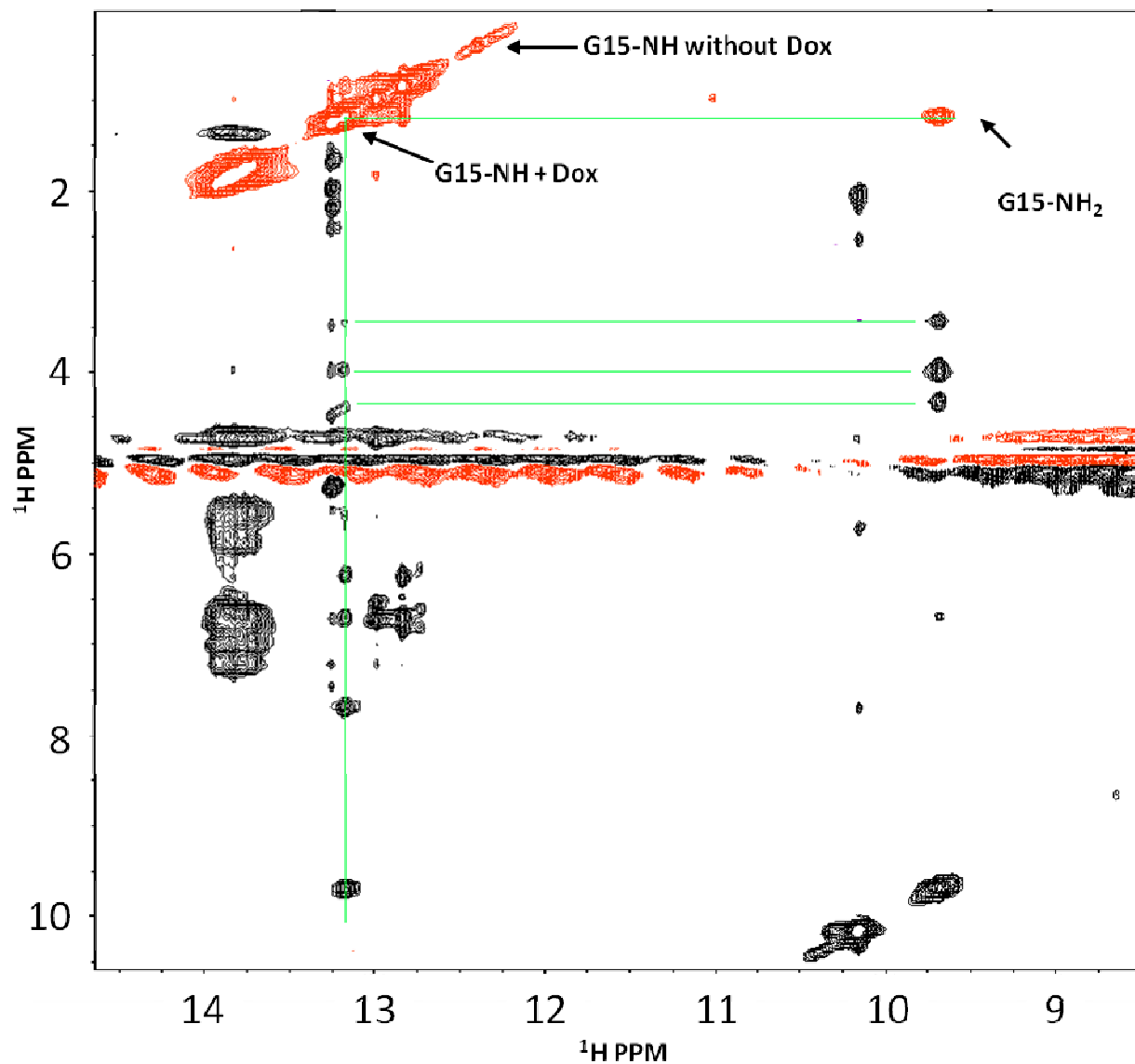
[bgmeiner@wakehealth.edu](mailto:bgmeiner@wakehealth.edu)

Table of Contents:

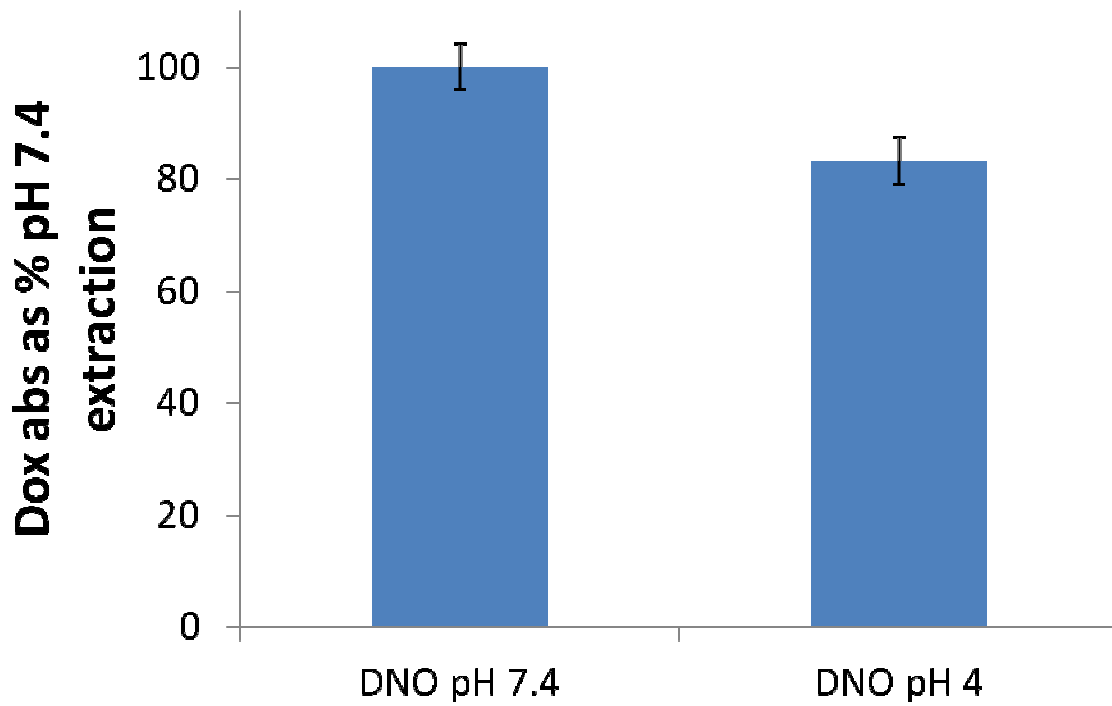
S1: NOESY NMR of DDH

S2: Acid Extractions of DCH

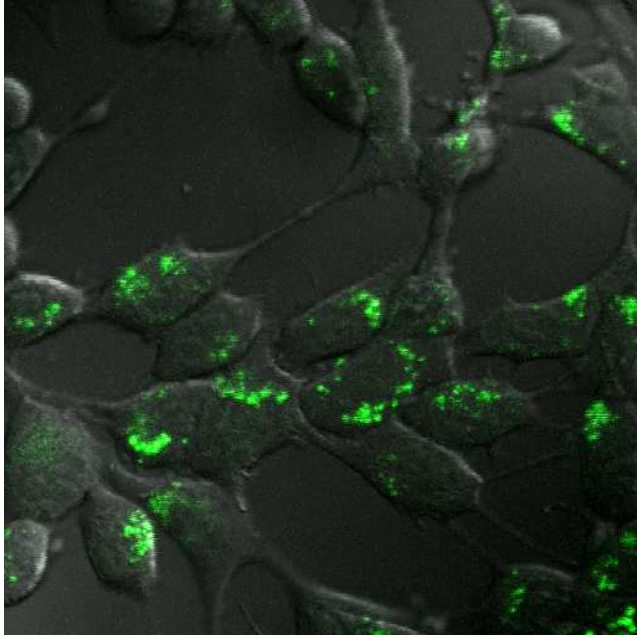
S3: Fluorescence Microscopy of 4T1 cells treated with DDH-FA



Supplementary Figure 1: NOESY spectra of DDH showing cross peaks to the G15-NH proton that only appear in spectra where the hairpin has been reacted with Dox. Green lines denote cross peaks between the guanidine bases and Dox. The vertical axis has been folded 12 PPM.



Supplementary Figure 2: After brief incubation at low pH approximating late endosomes nearly 20% of Dox can be extracted from the DCH when compared to the physiological pH 7.4. Error bars represent standard deviations from mean.



Supplementary Figure 3: Fluorescence microscopy of 4T1 cells after 1 hour treatment with DDH-FA shows endosomal localization of Dox.