

Supporting Information

Silica-Supported Oligomeric Benzyl Phosphate (Si-OBP) and Triazole Phosphate (Si-OTP) Alkylating Reagents

*Pradip K. Maity, Saqib Faisal, Alan Rolfe, Diana Stoianova[†] and Paul R. Hanson**

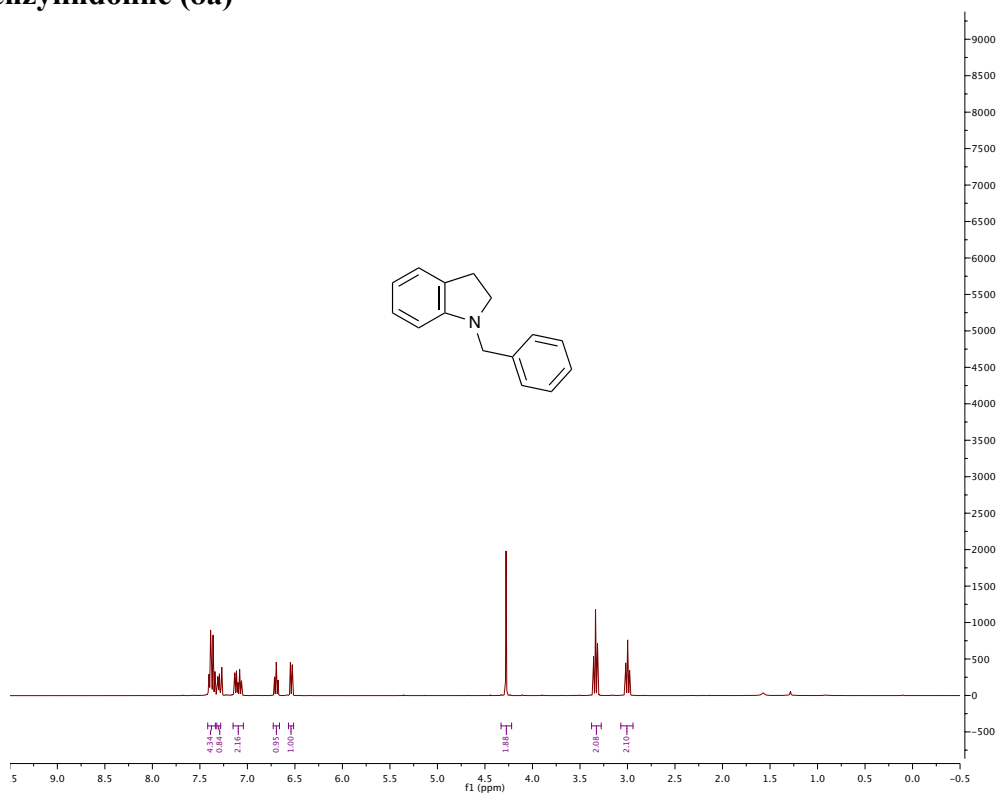
Department of Chemistry, University of Kansas, 1251 Wescoe Hall Drive, Lawrence, KS 66045-7582, United States, and The University of Kansas Center for Chemical Methodologies and Library Development (KU-CMLD), 2034-Becker Drive, Delbert M. Shankel Structural Biology Center, Lawrence, Kansas 66047, United States. [†]Materia, Inc. 60 N. San Gabriel Blvd. Pasadena, CA 91107.

phanson@ku.edu

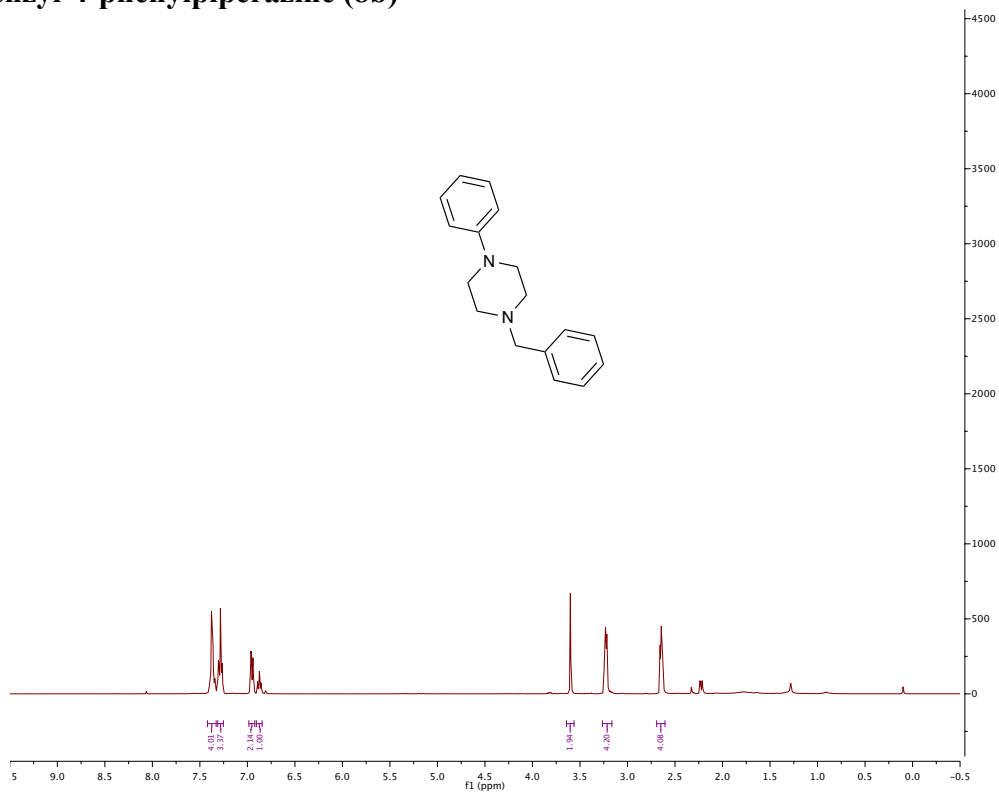
Table of Contents

¹H, ¹³C-NMR Spectra for All Relevant Compounds: *SI-2* to *SI-27*

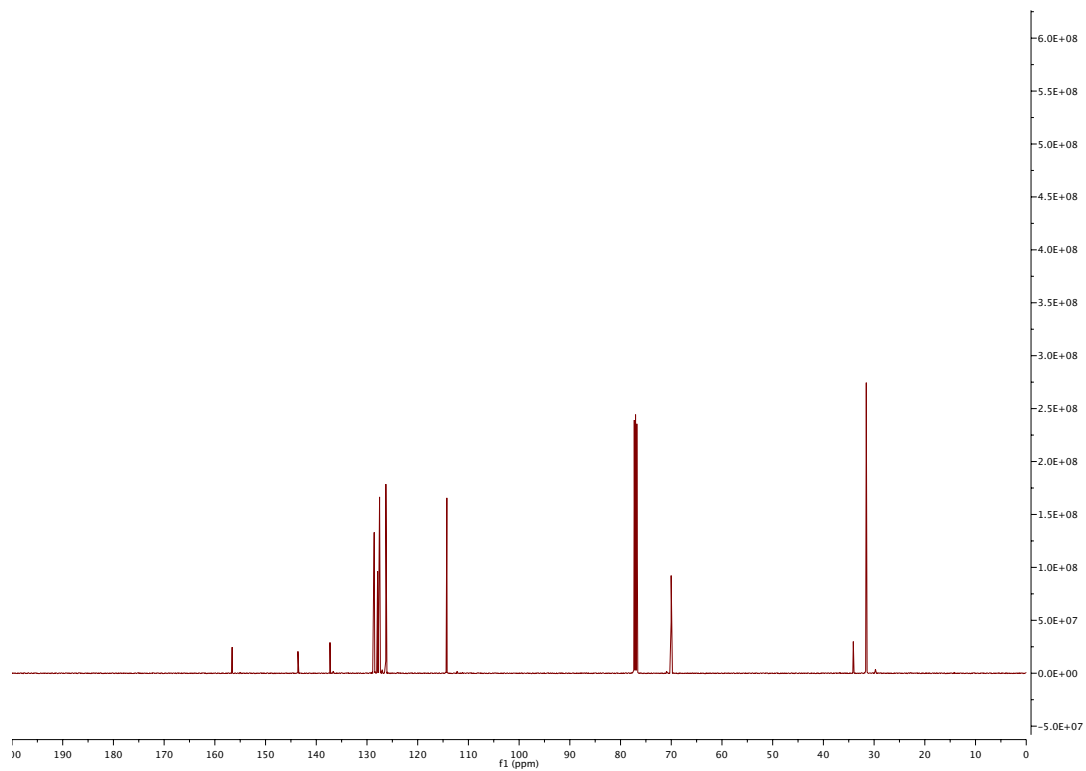
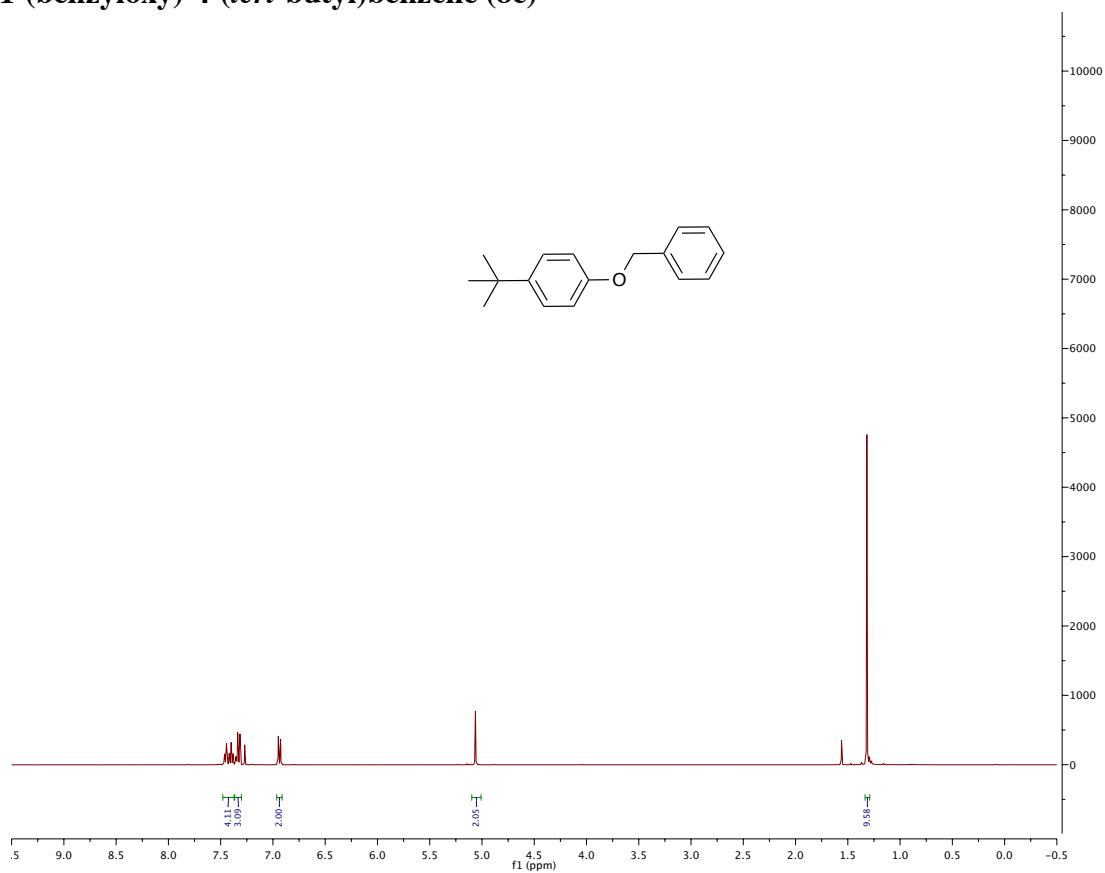
1-benzylindoline (8a)



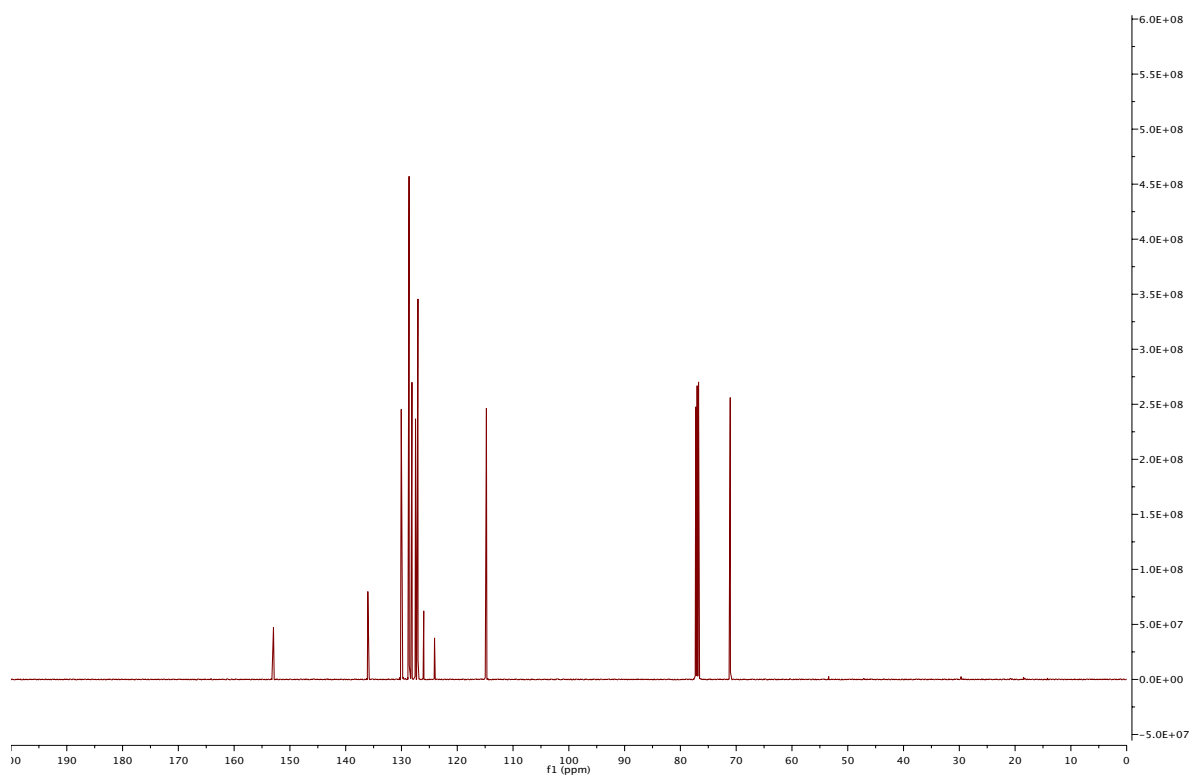
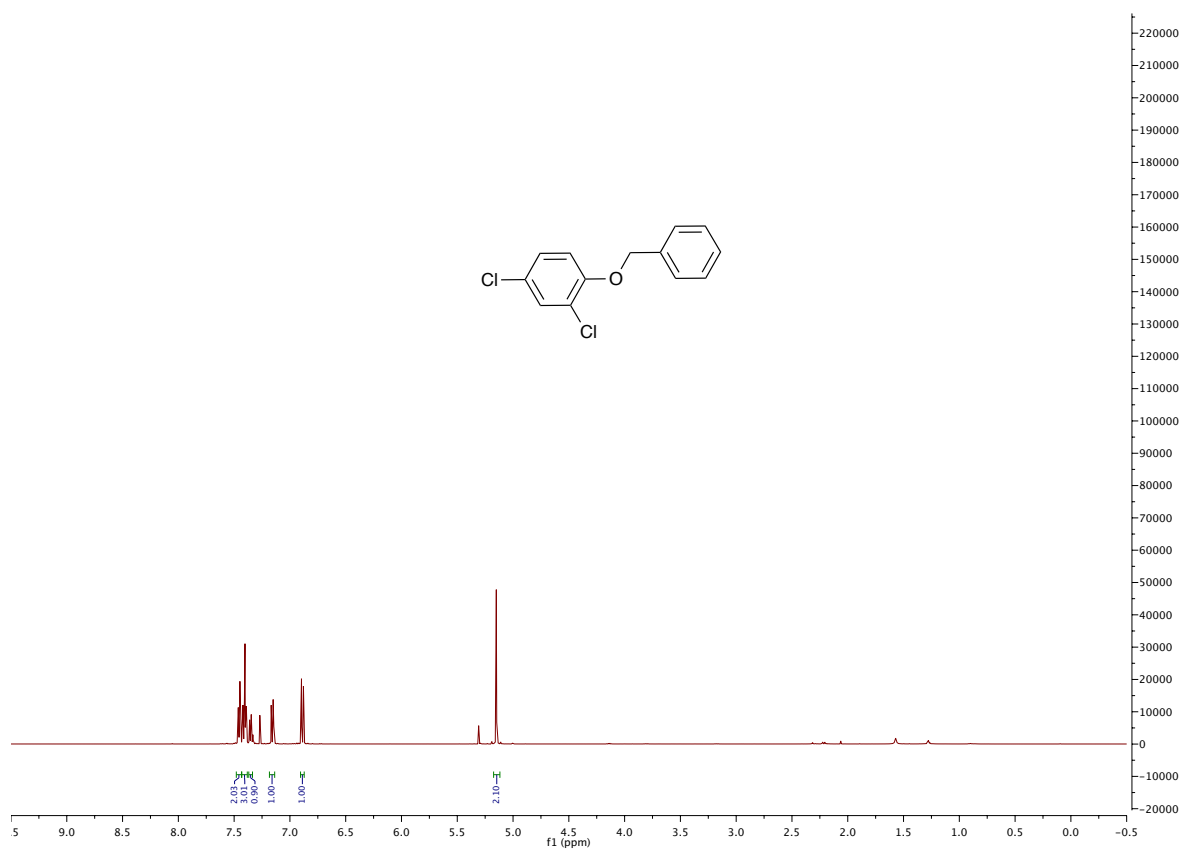
1-benzyl-4-phenylpiperazine (8b)



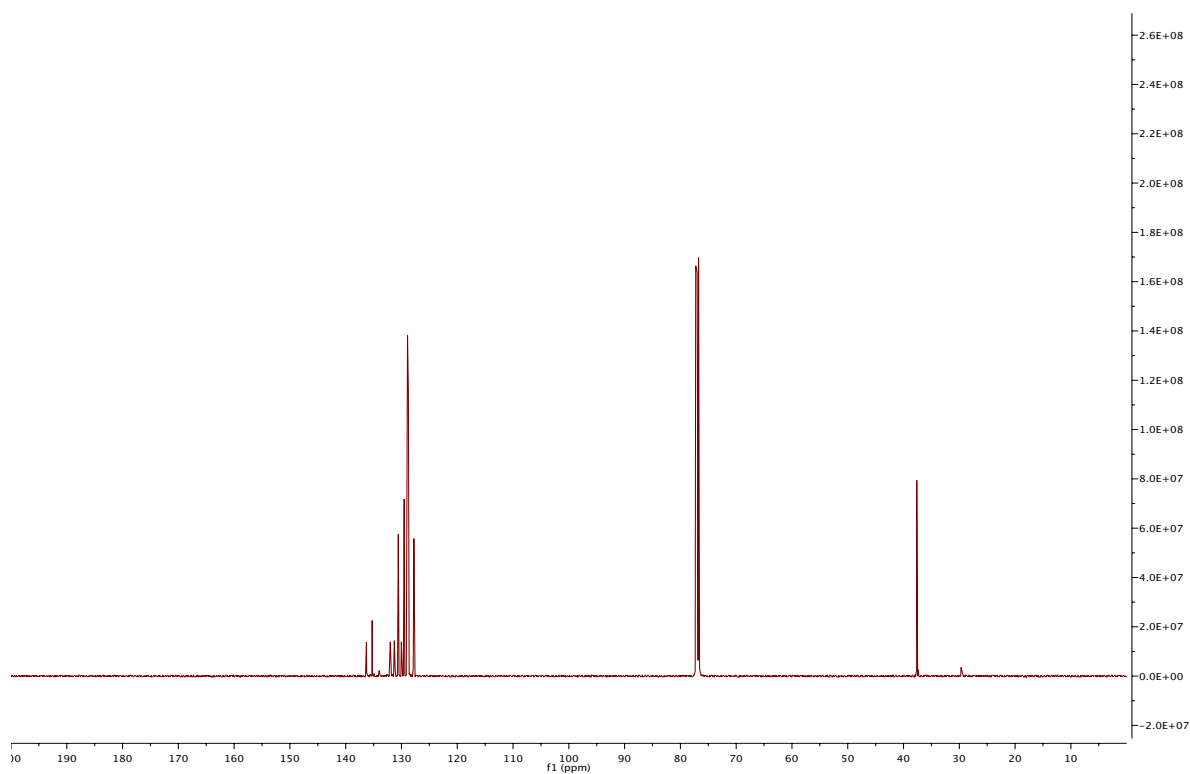
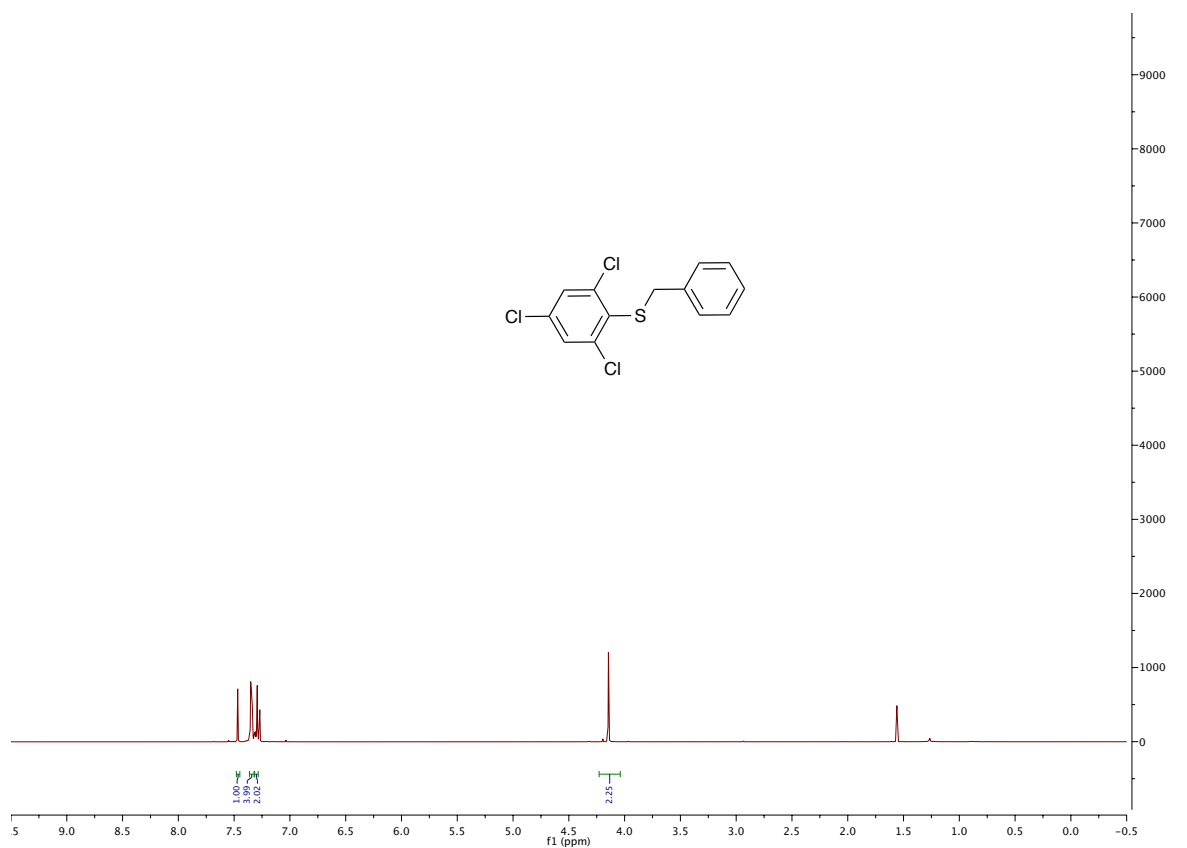
1-(benzyloxy)-4-(*tert*-butyl)benzene (8c)



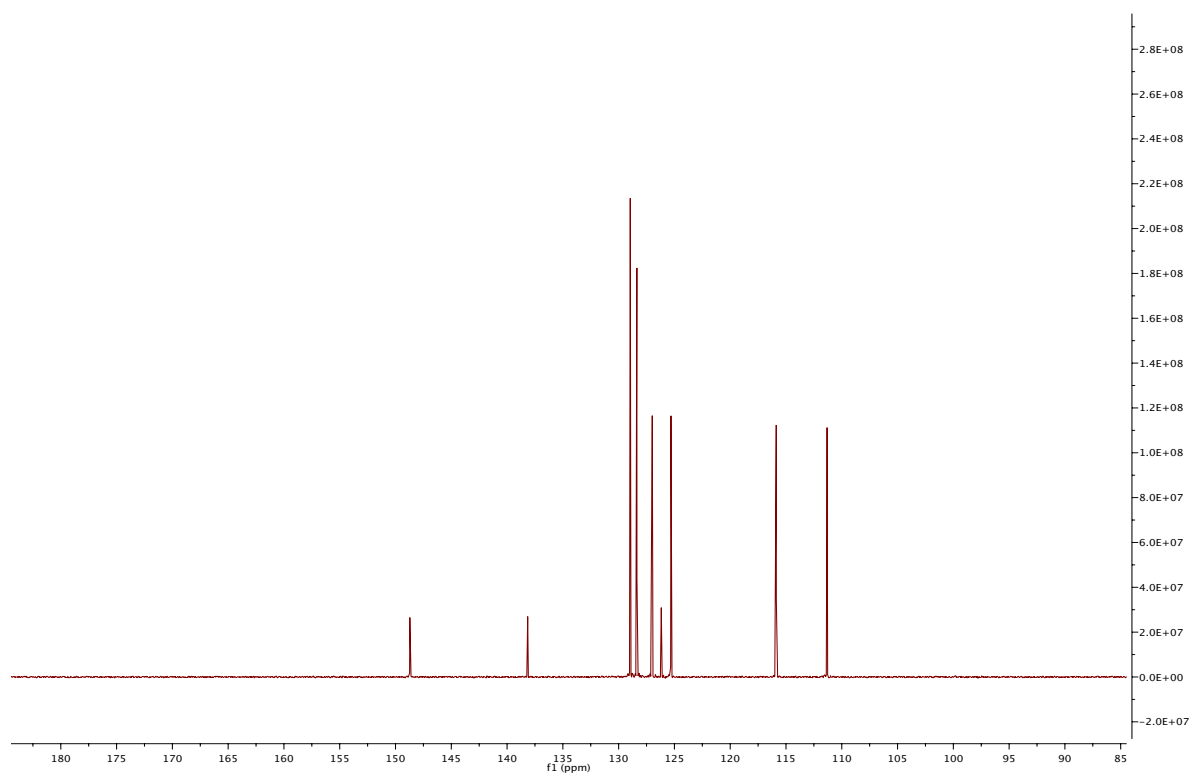
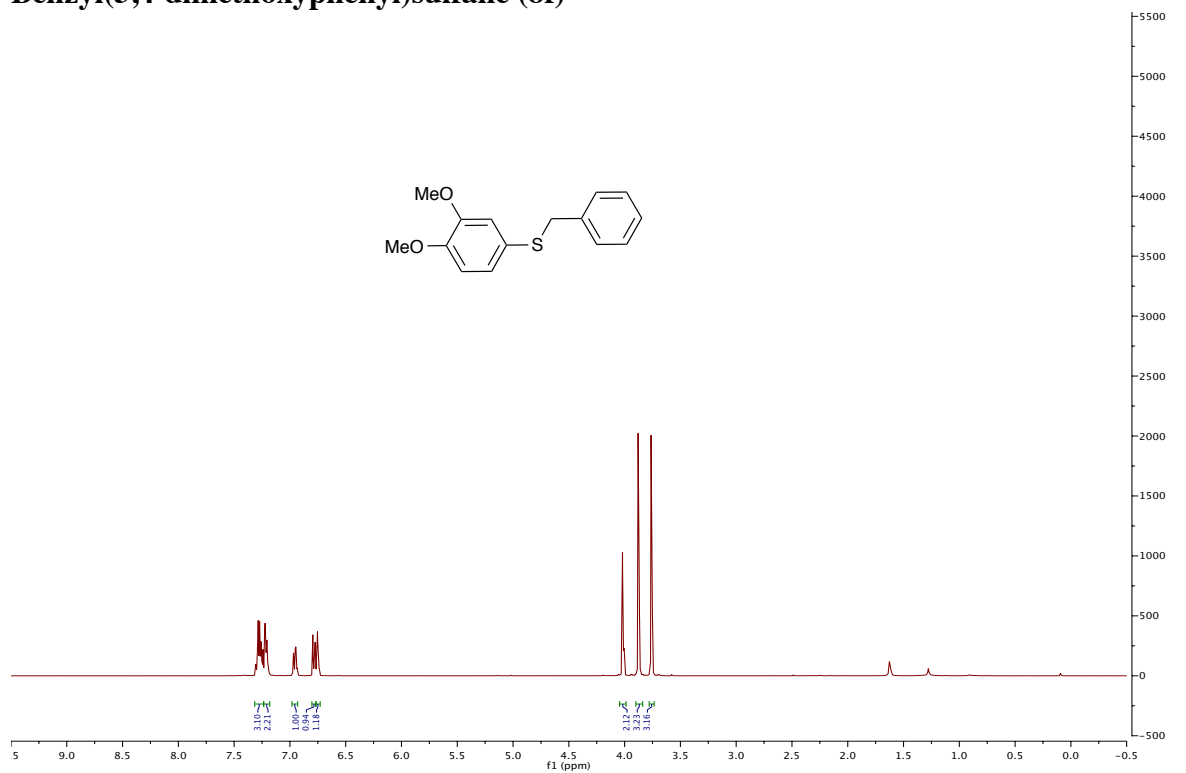
1-(benzyloxy)-2,4-dichlorobenzene (8d)



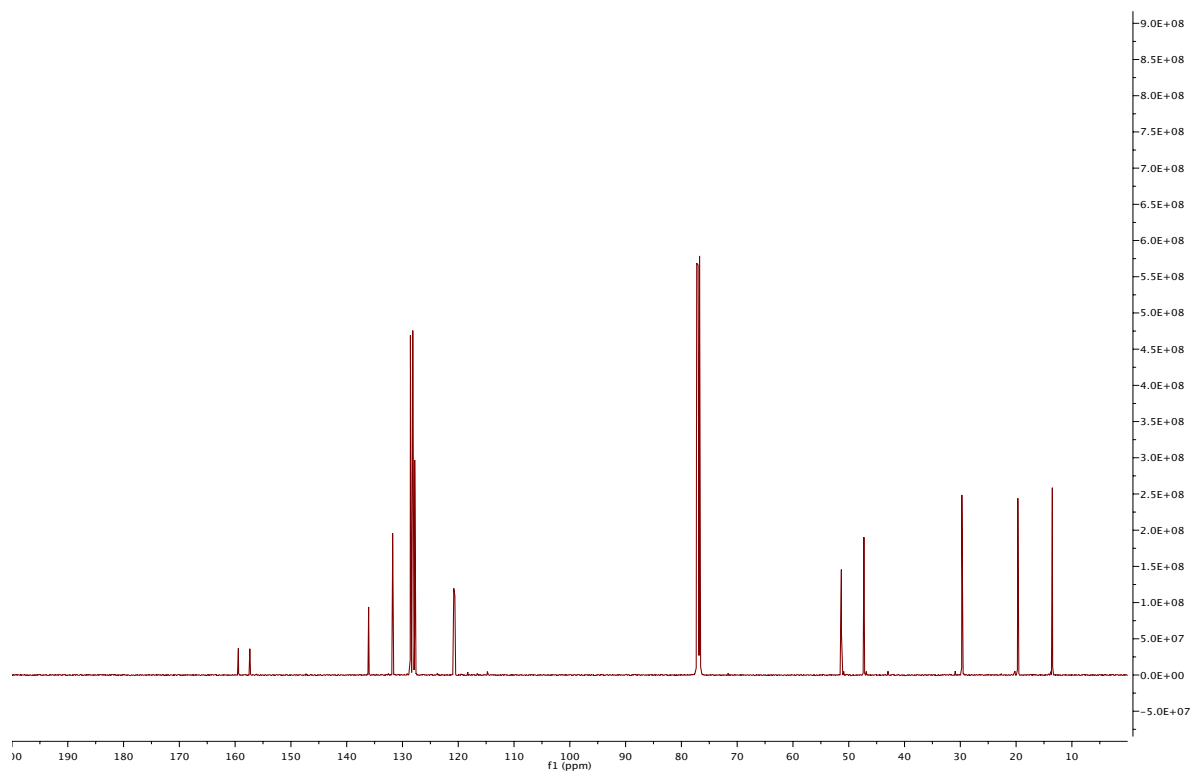
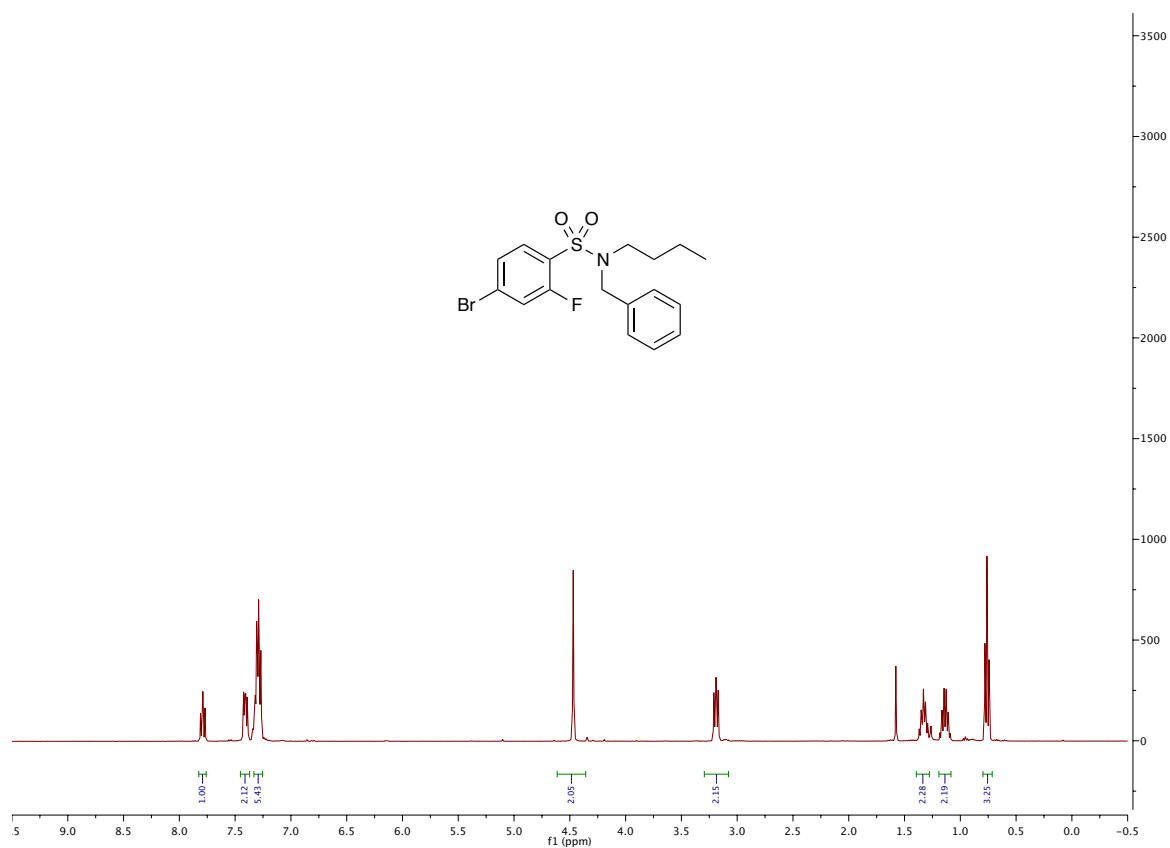
Benzyl(2,4,6-trichlorophenyl)sulfane (8e)



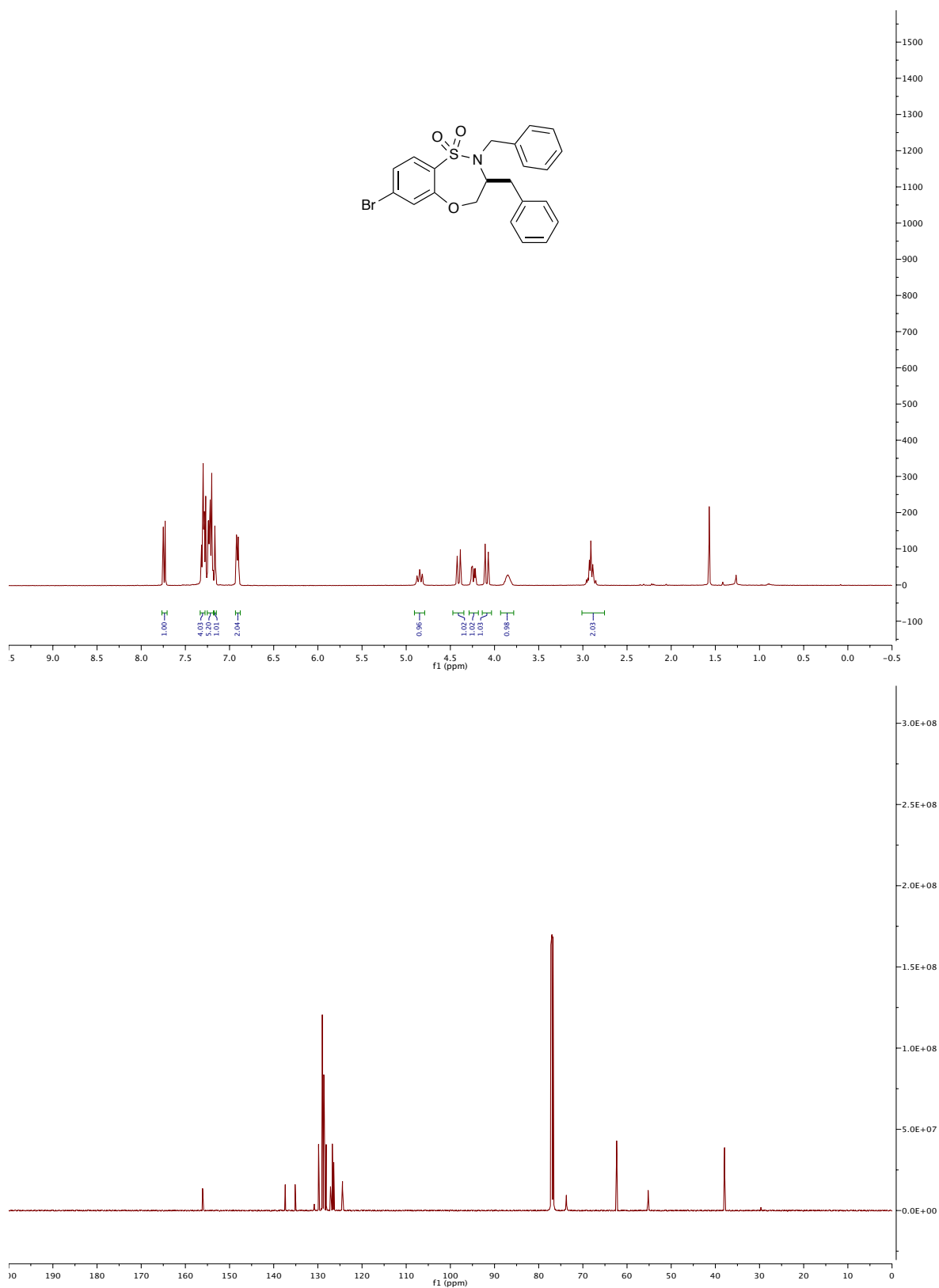
Benzyl(3,4-dimethoxyphenyl)sulfane (8f)



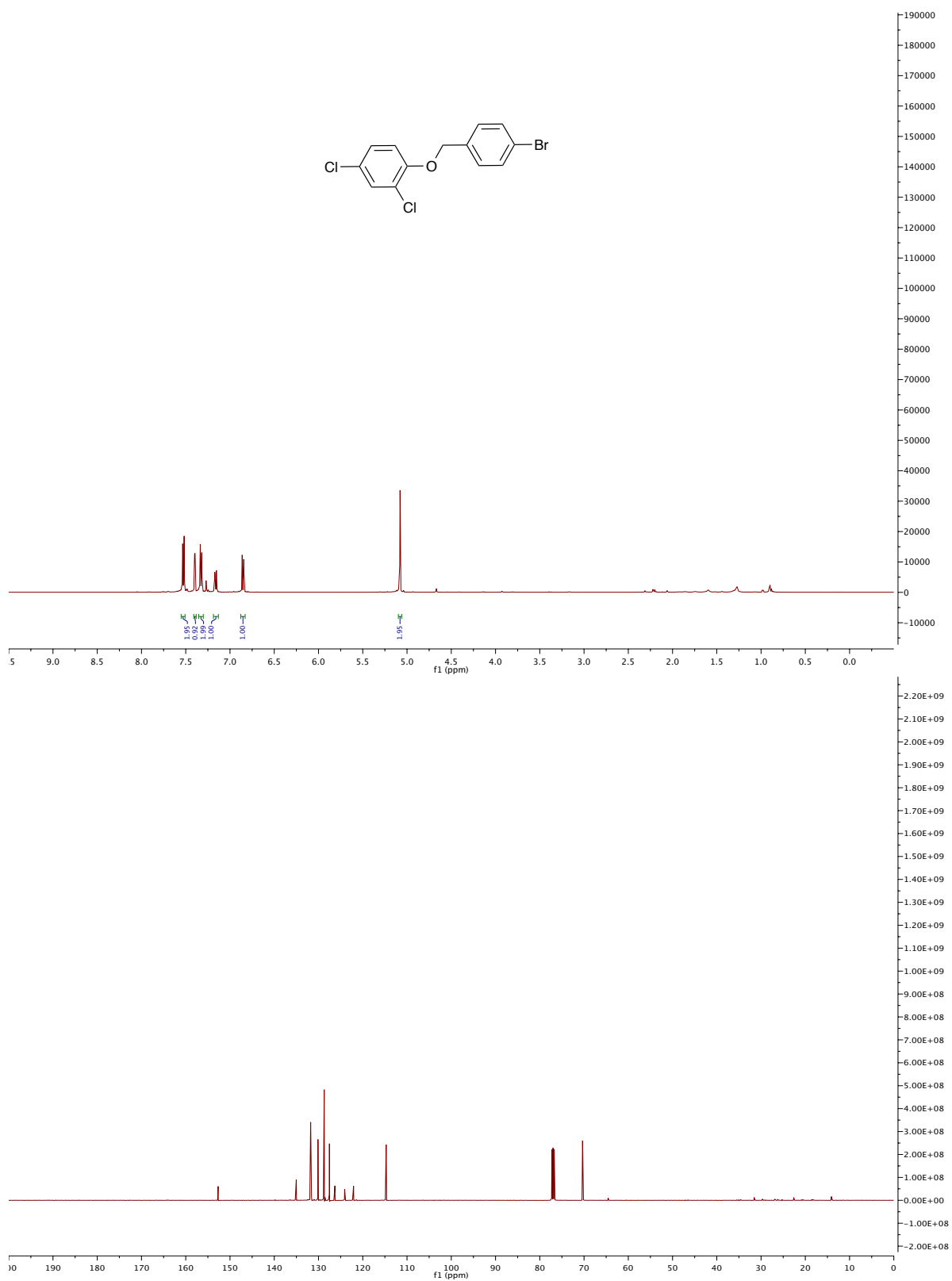
***N*-benzyl-4-bromo-*N*-butyl-2-fluorobenzenesulfonamide (8g)**



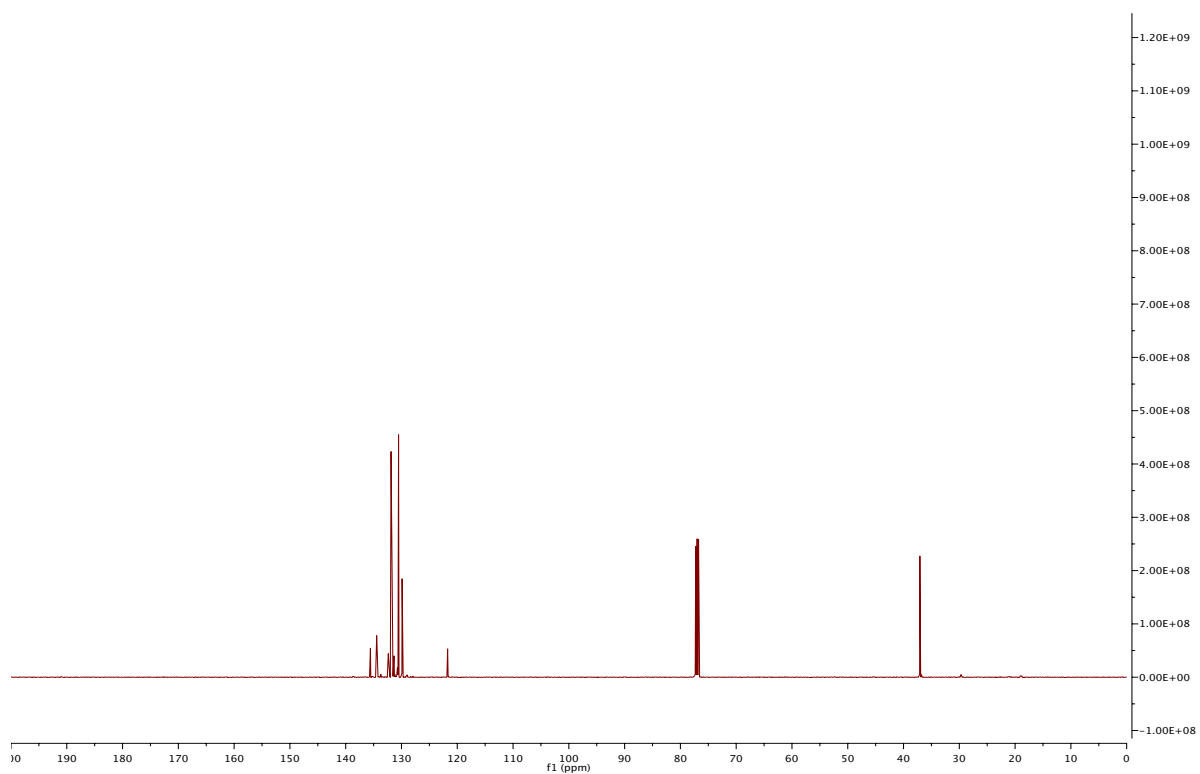
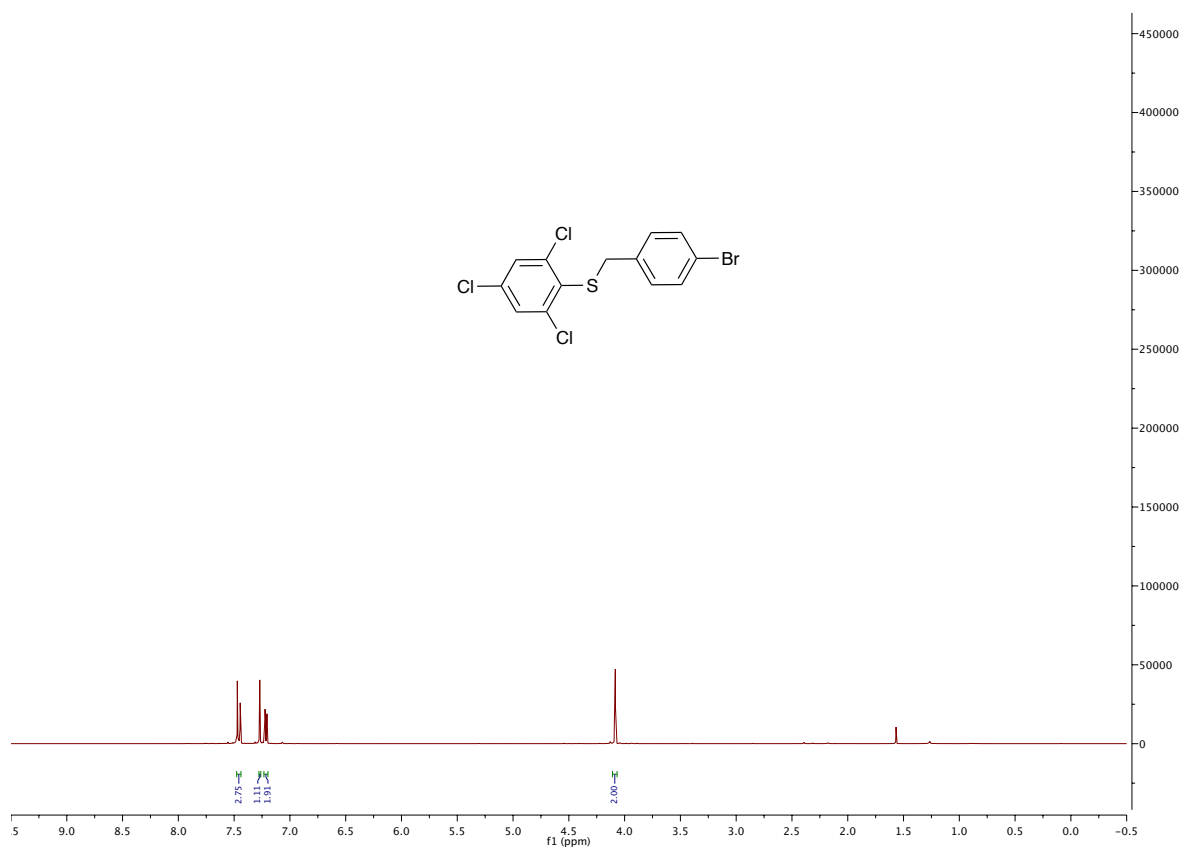
2,3-dibenzyl-7-bromo-3,4-dihydro-2H-benzo[b][1,4,5]oxathiazepine 1,1-dioxide (8h)



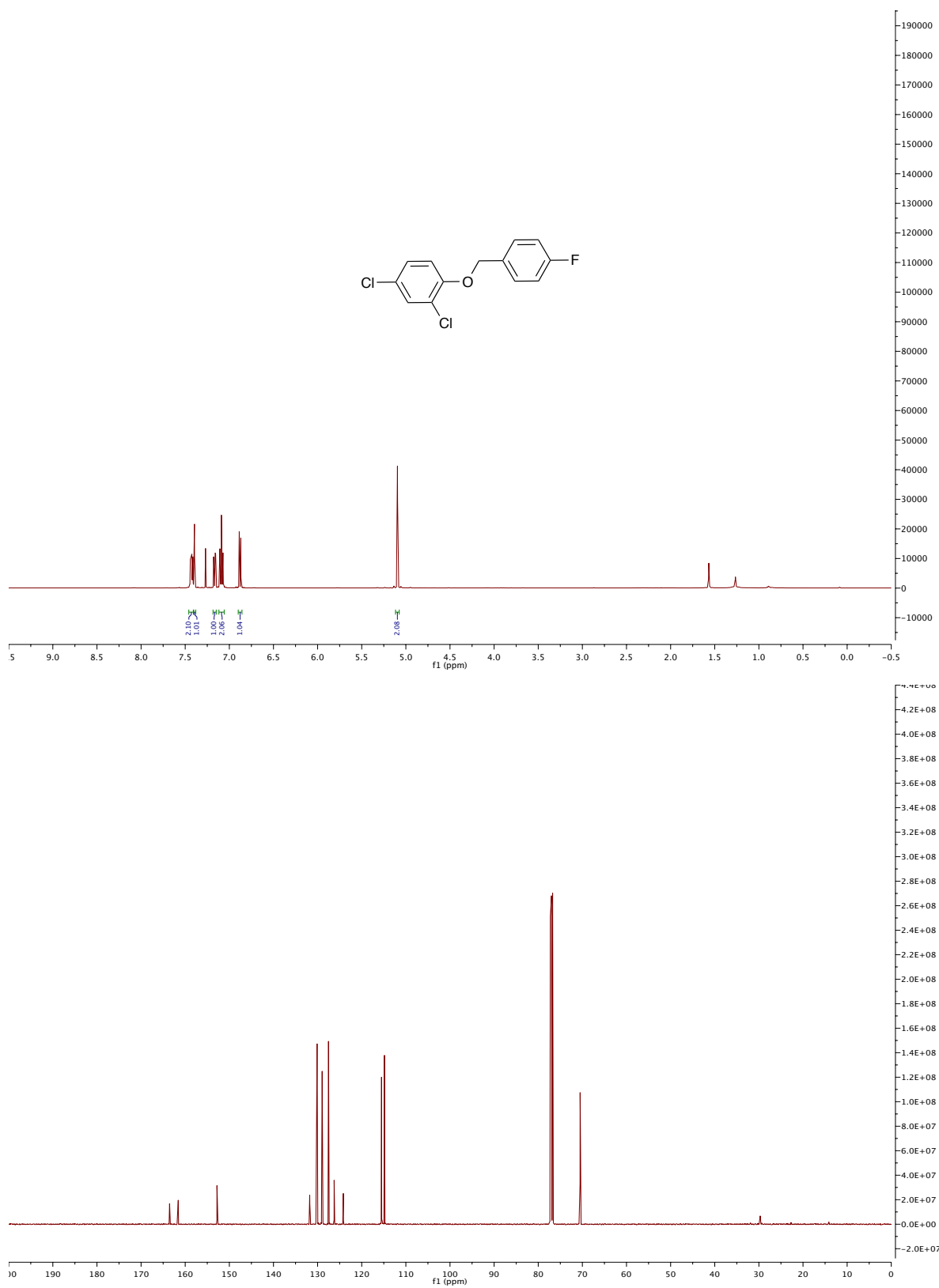
1-((4-bromobenzyl)oxy)-2,4-dichlorobenzene (8i)



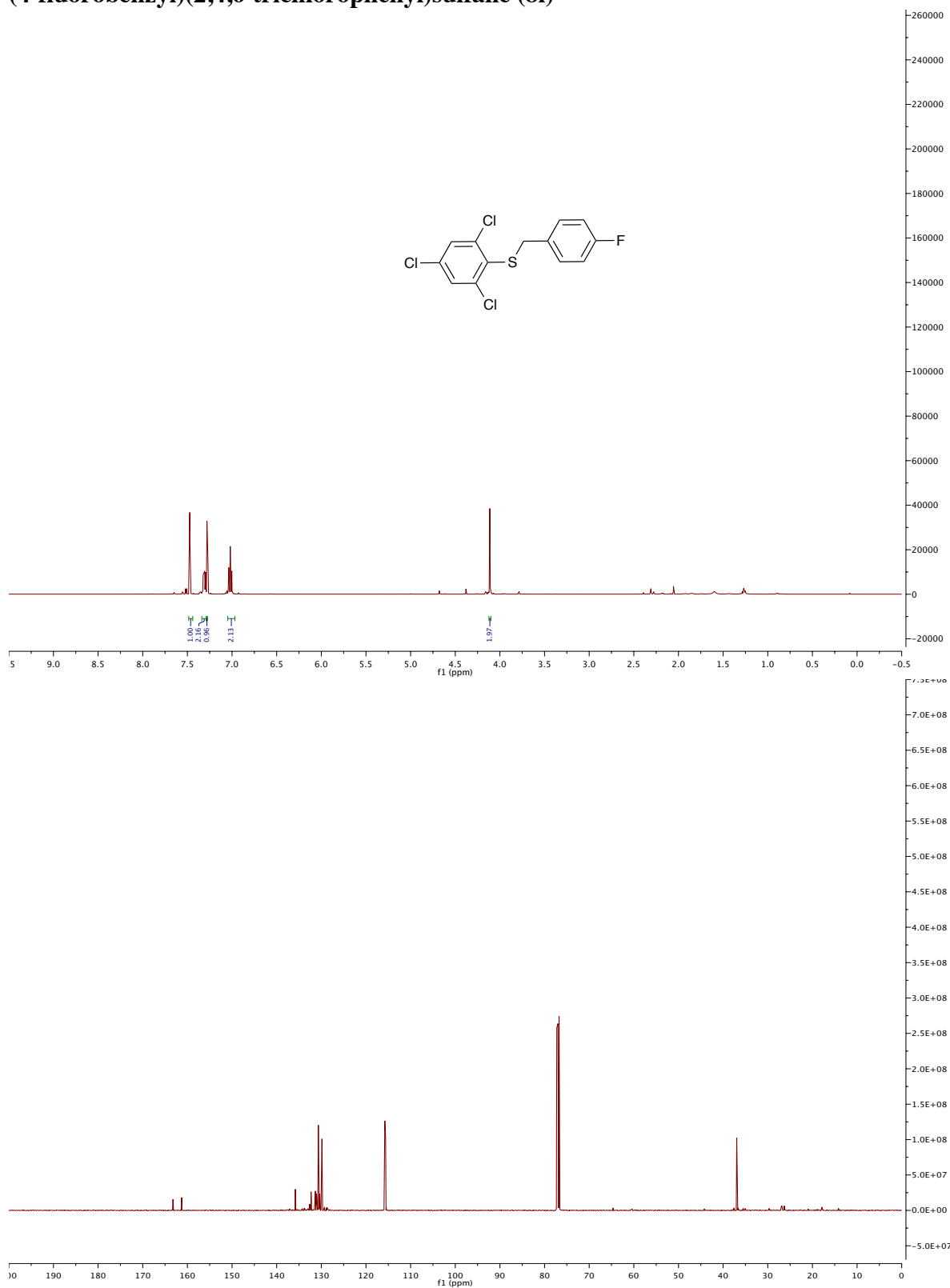
(4-bromobenzyl)(2,4,6-trichlorophenyl)sulfane (8j)



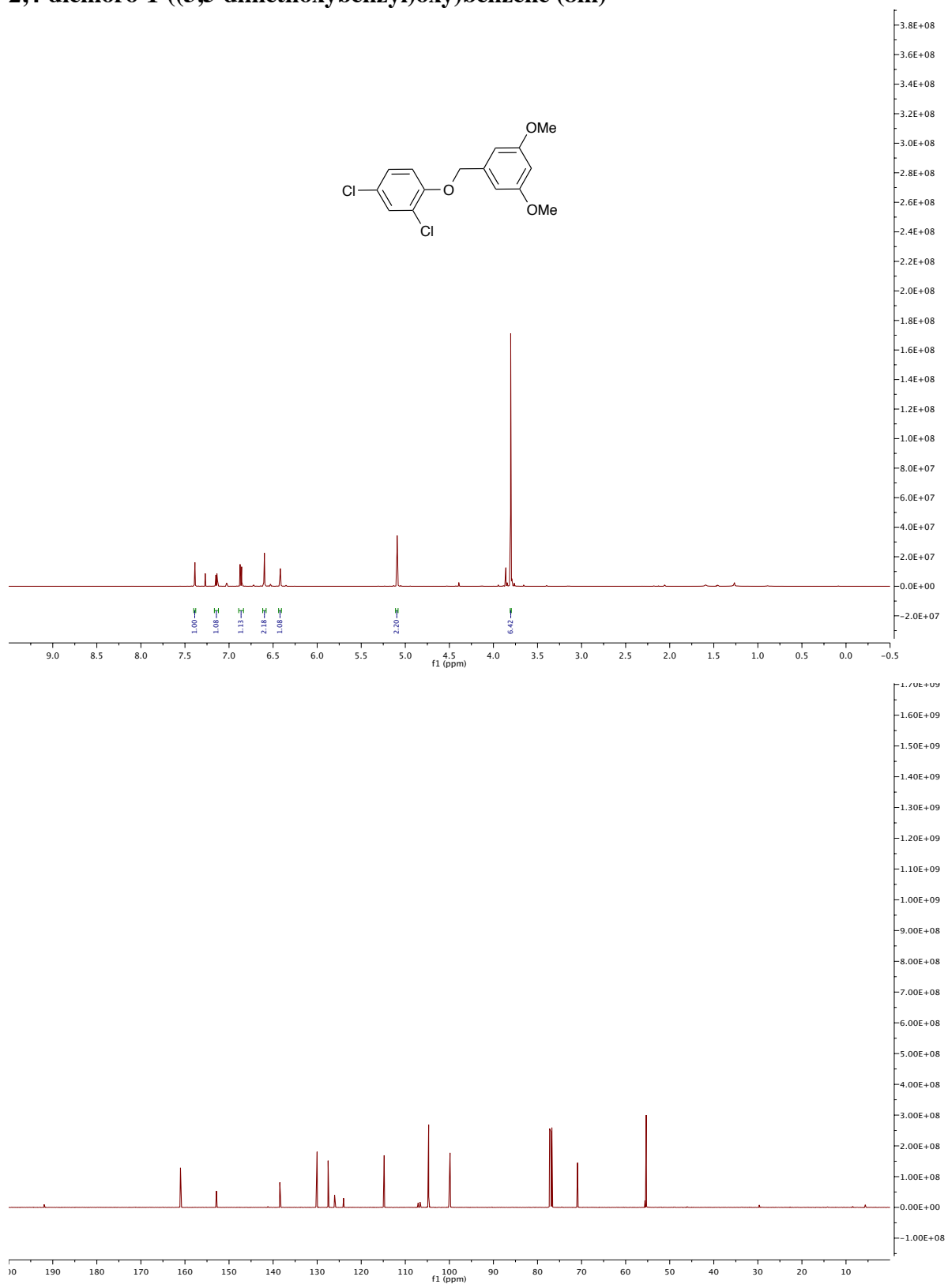
4-dichloro-1-((4-fluorobenzyl)oxy)benzene (8k)



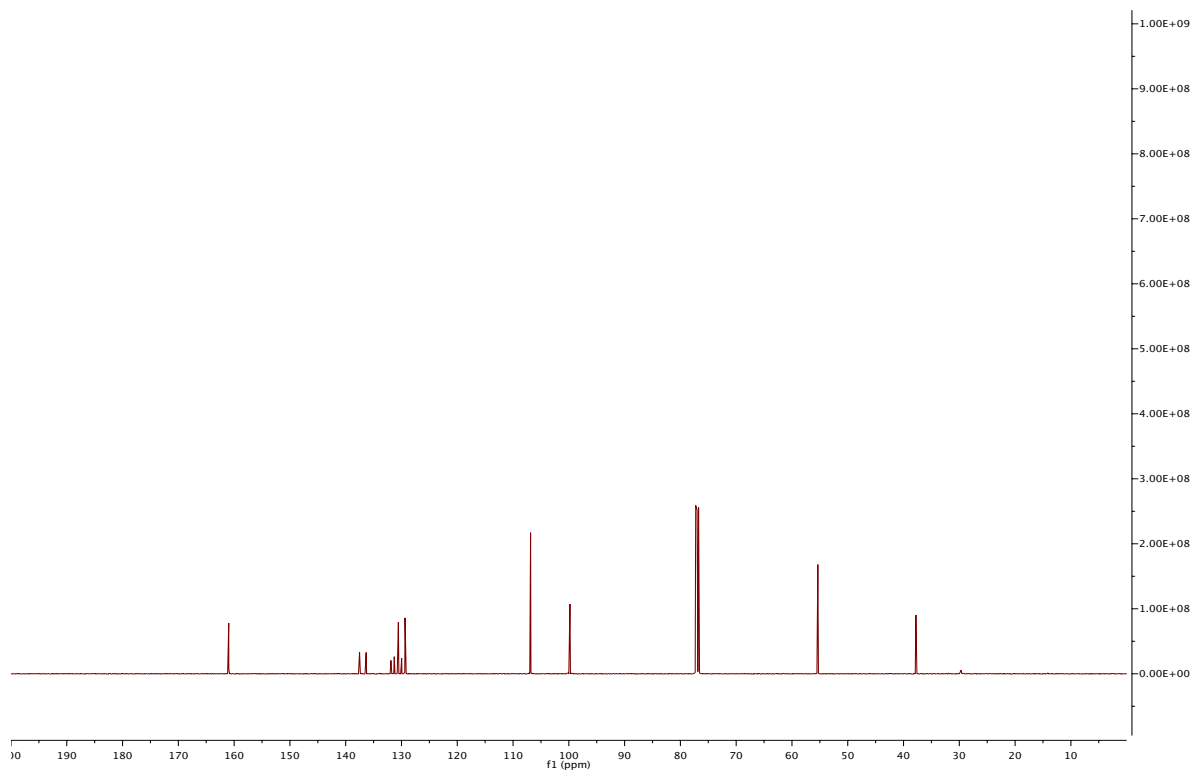
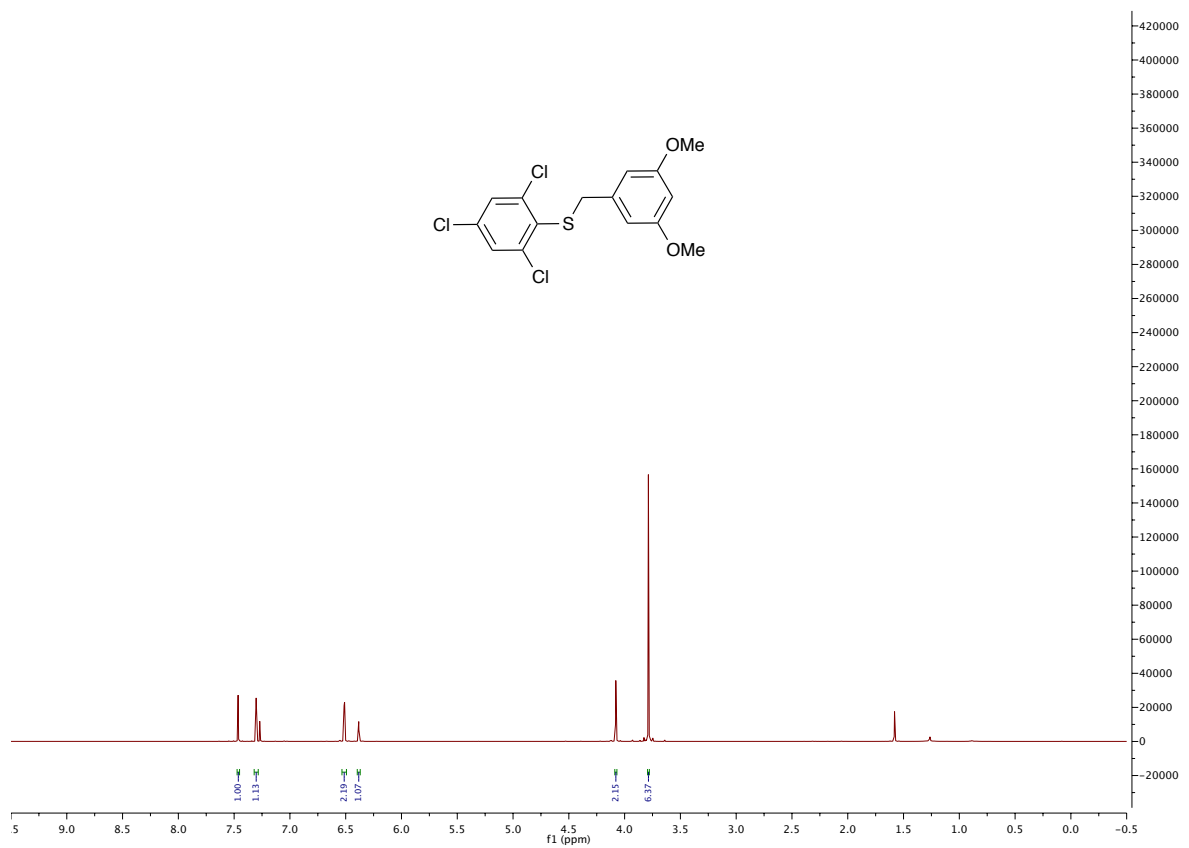
(4-fluorobenzyl)(2,4,6-trichlorophenyl)sulfane (8l)



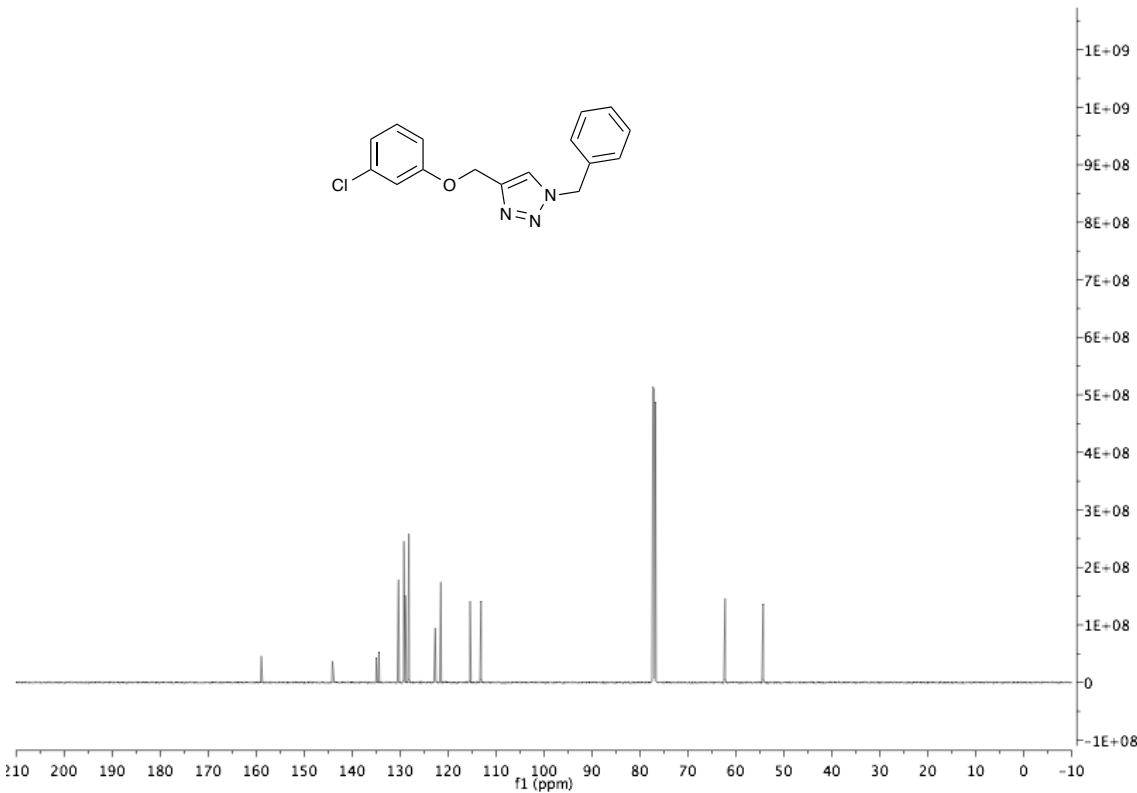
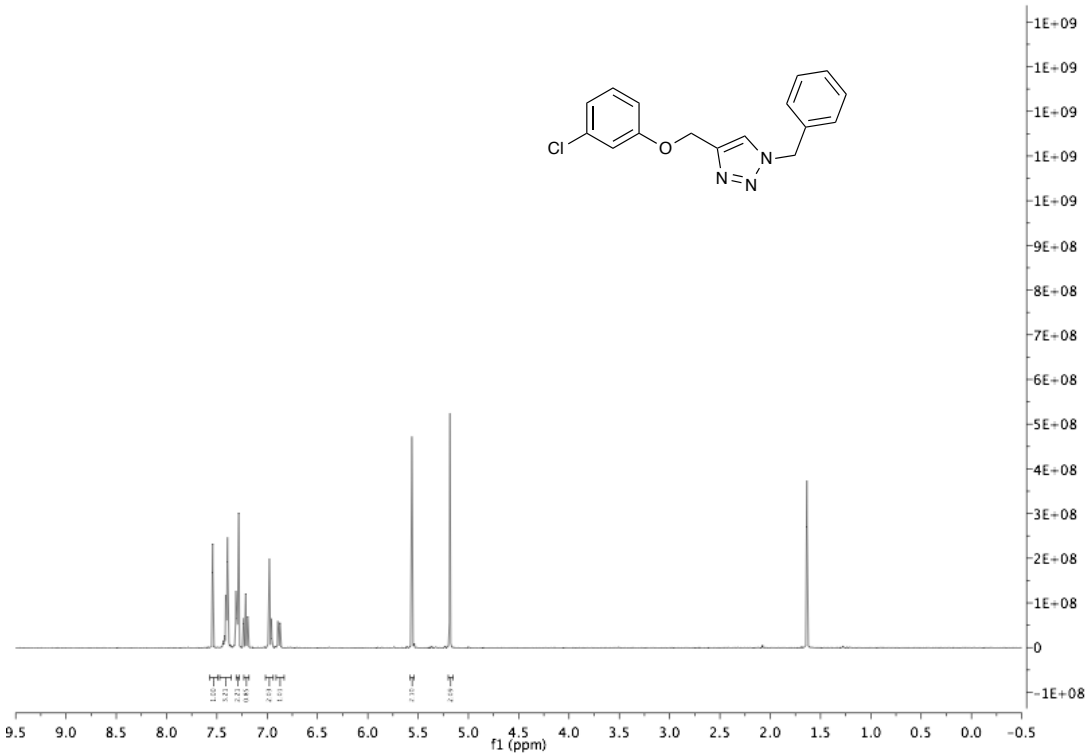
2,4-dichloro-1-((3,5-dimethoxybenzyl)oxy)benzene (8m)



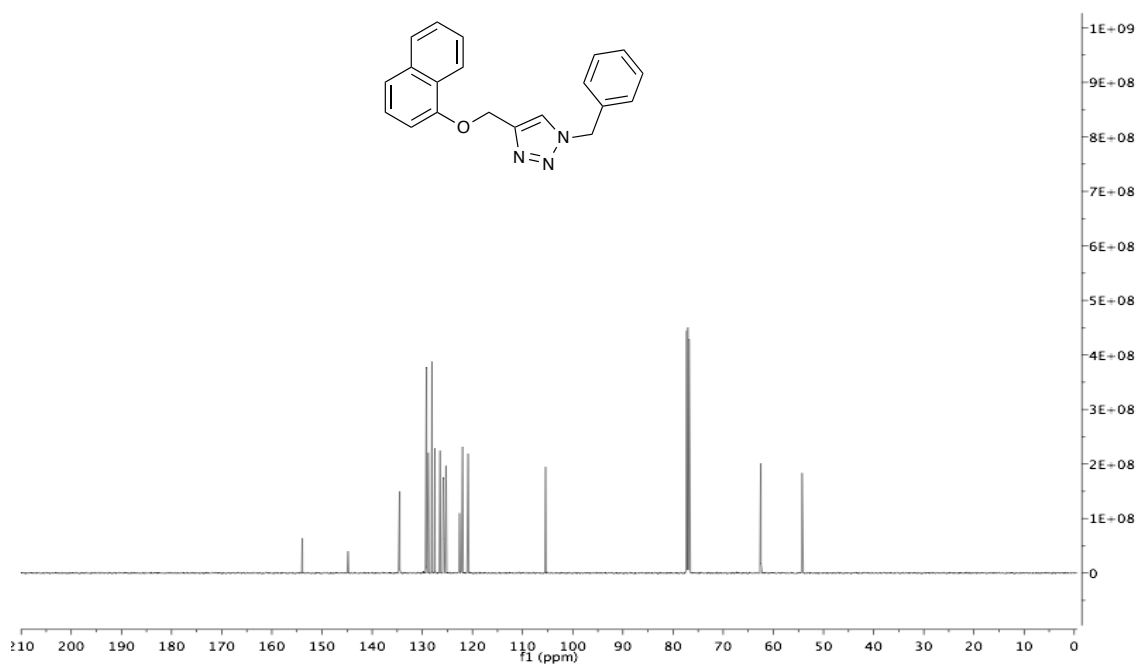
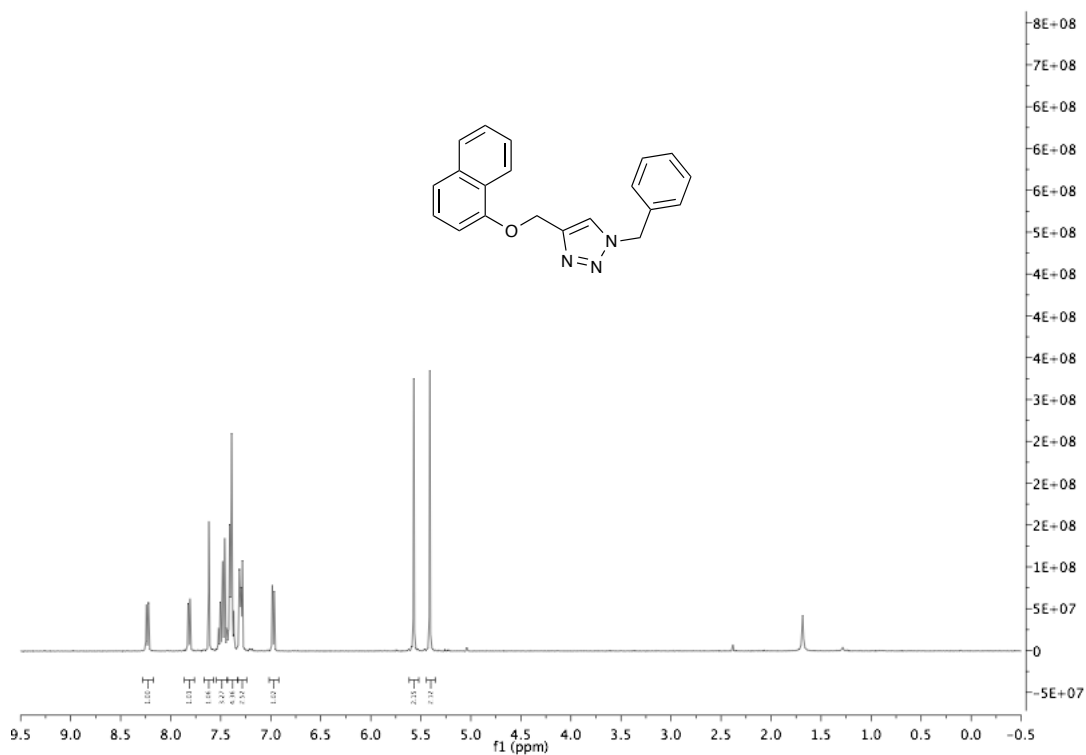
(3,5-dimethoxybenzyl)(2,4,6-trichlorophenyl)sulfane (8n)



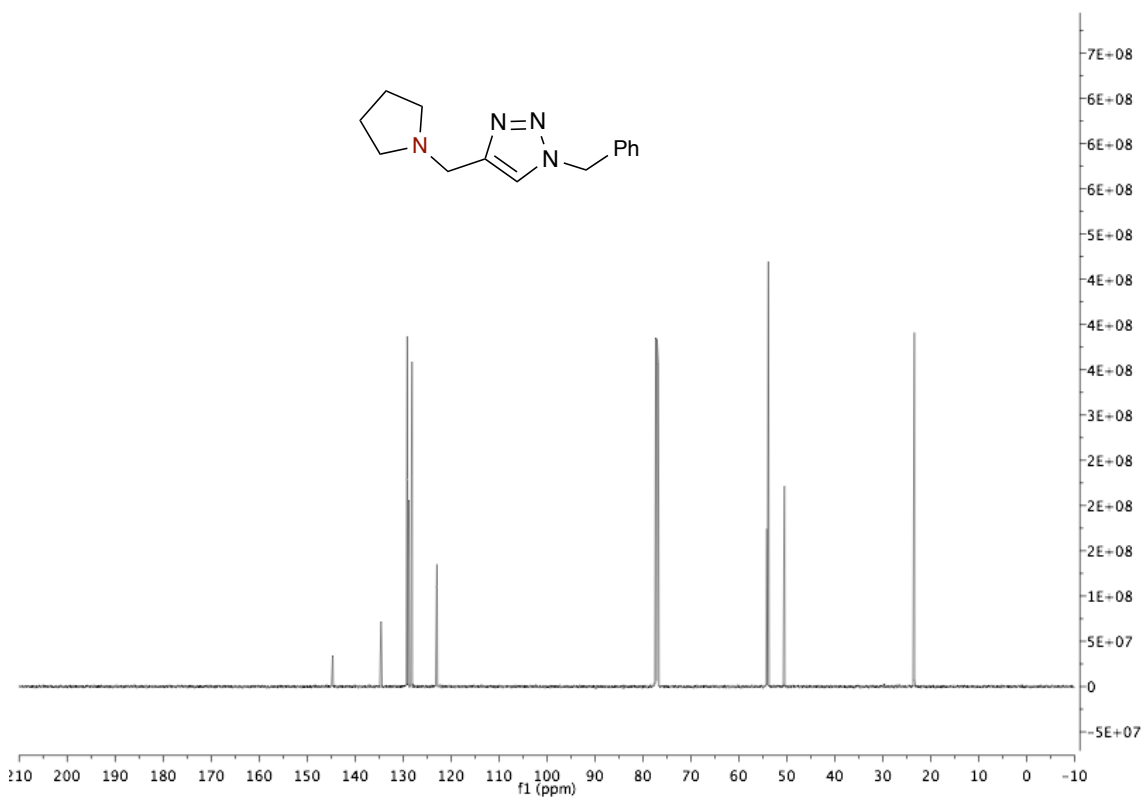
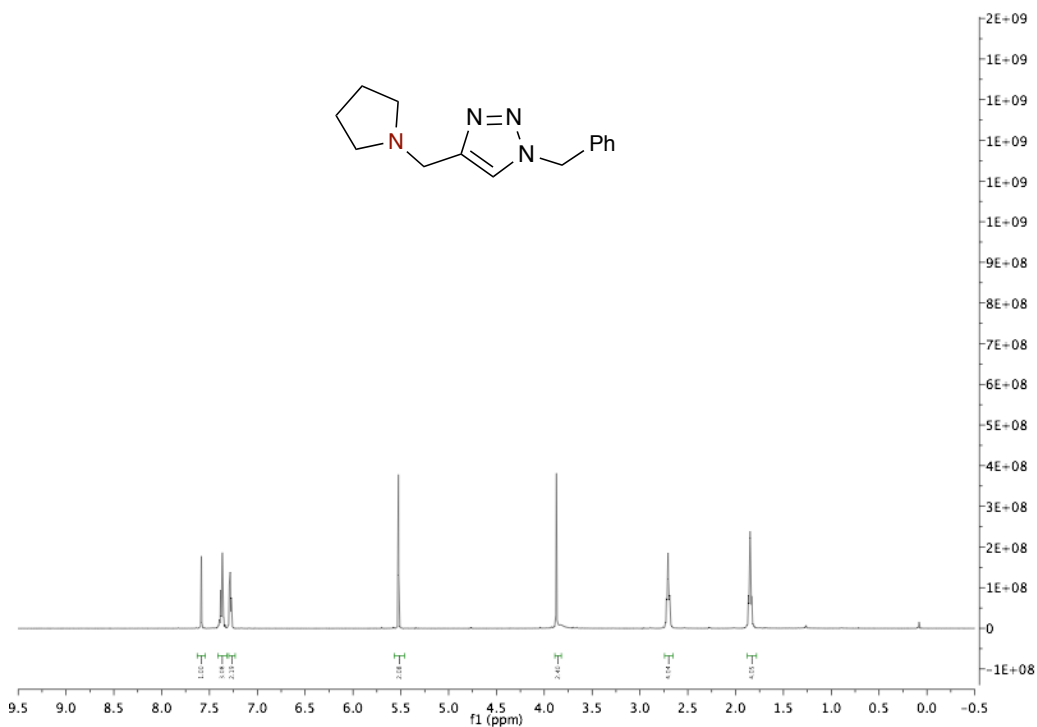
1-benzyl-4-((3-chlorophenoxy)methyl)-1*H*-1,2,3-triazole (11a)



1-benzyl-4-((naphthalen-1-yloxy)methyl)-1*H*-1,2,3-triazole (11b)

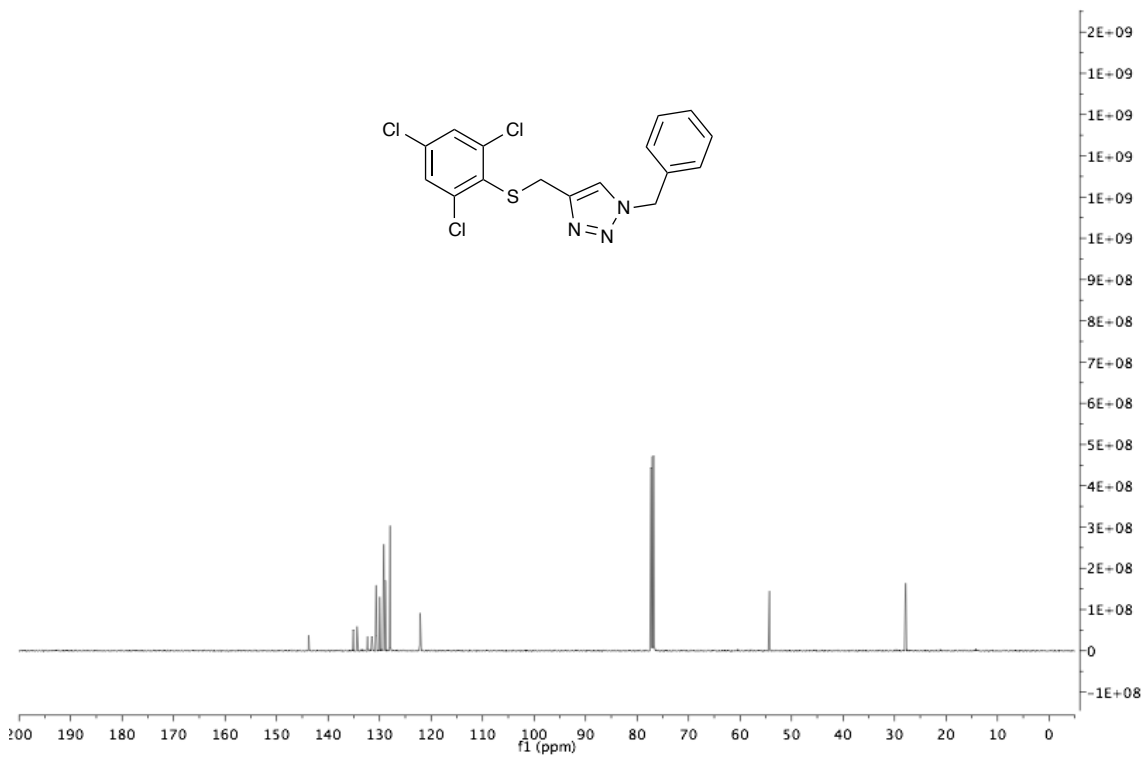


1-benzyl-4-(pyrrolidin-1-ylmethyl)-1*H*-1,2,3-triazole (11c)

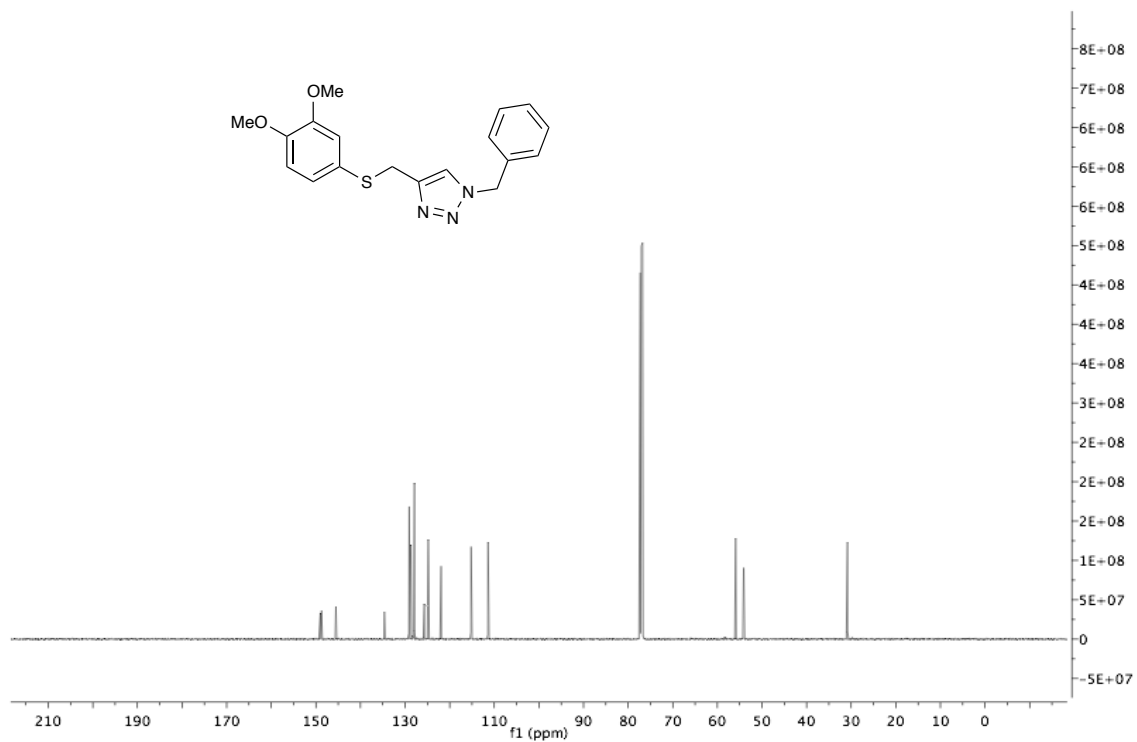
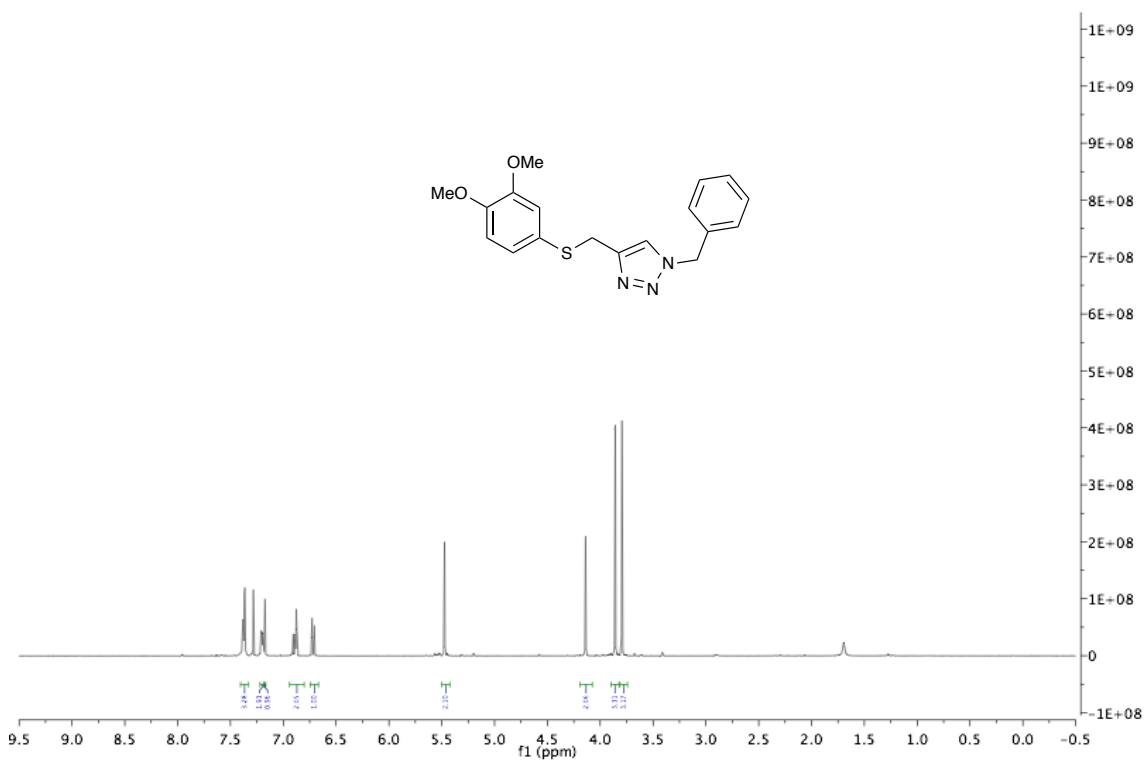


Chemical structure: Clc1cc(Cl)c(SCC2=CN=CN2Cc3ccccc3)c(Cl)c1

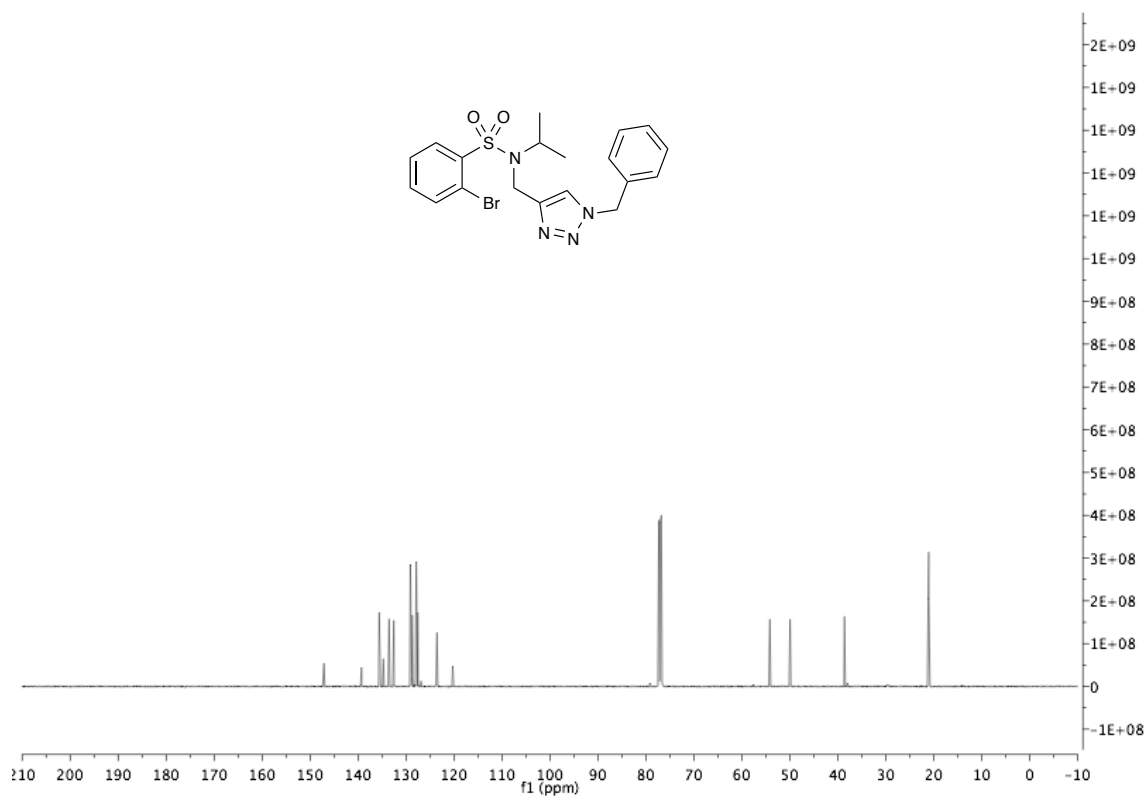
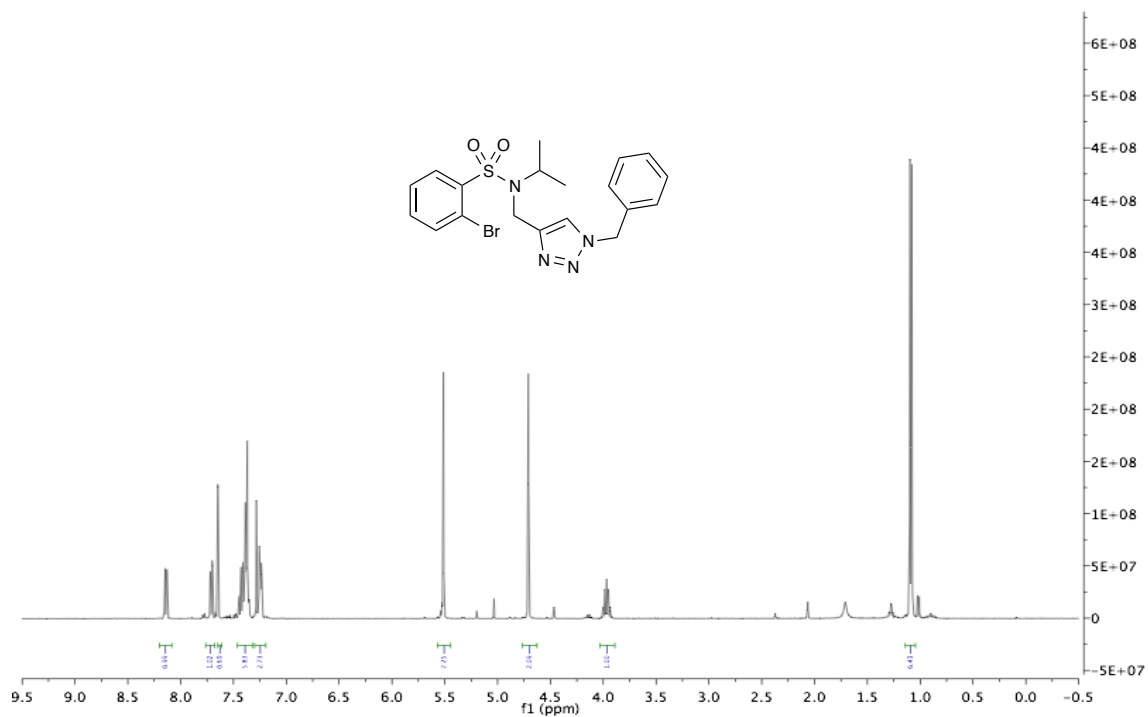
¹H NMR spectrum (CDCl₃) showing peaks at approximately 7.2-7.5 ppm (aromatic, 5H), 4.1 ppm (CH₂, 2H), and 2.1 ppm (CH₂, 2H). Integration values are 1.00, 1.00, and 1.00 respectively.



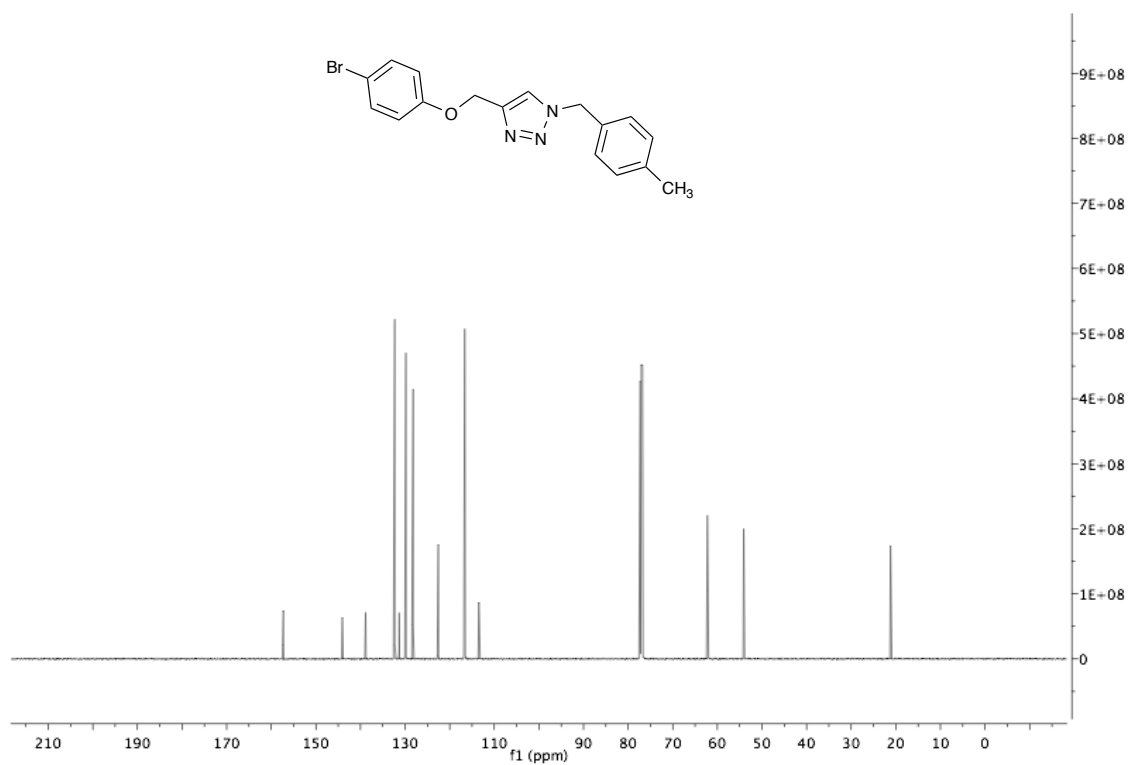
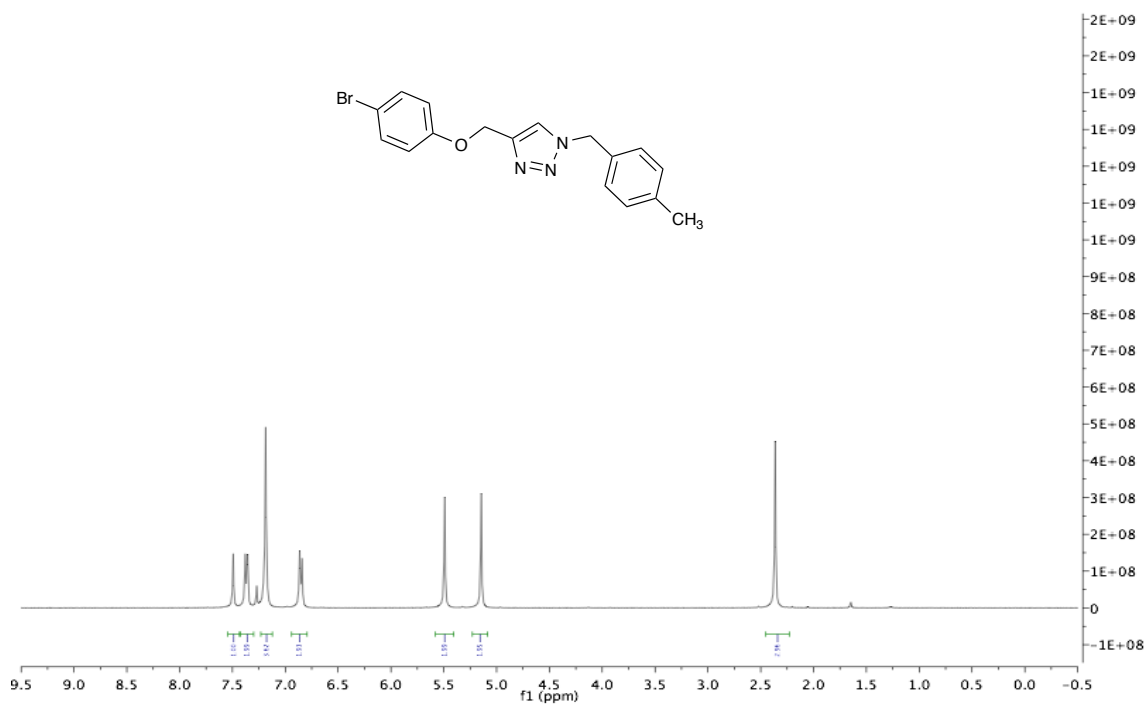
1-benzyl-4-(((3,4-dimethoxyphenyl)thio)methyl)-1H-1,2,3-triazole (11f)



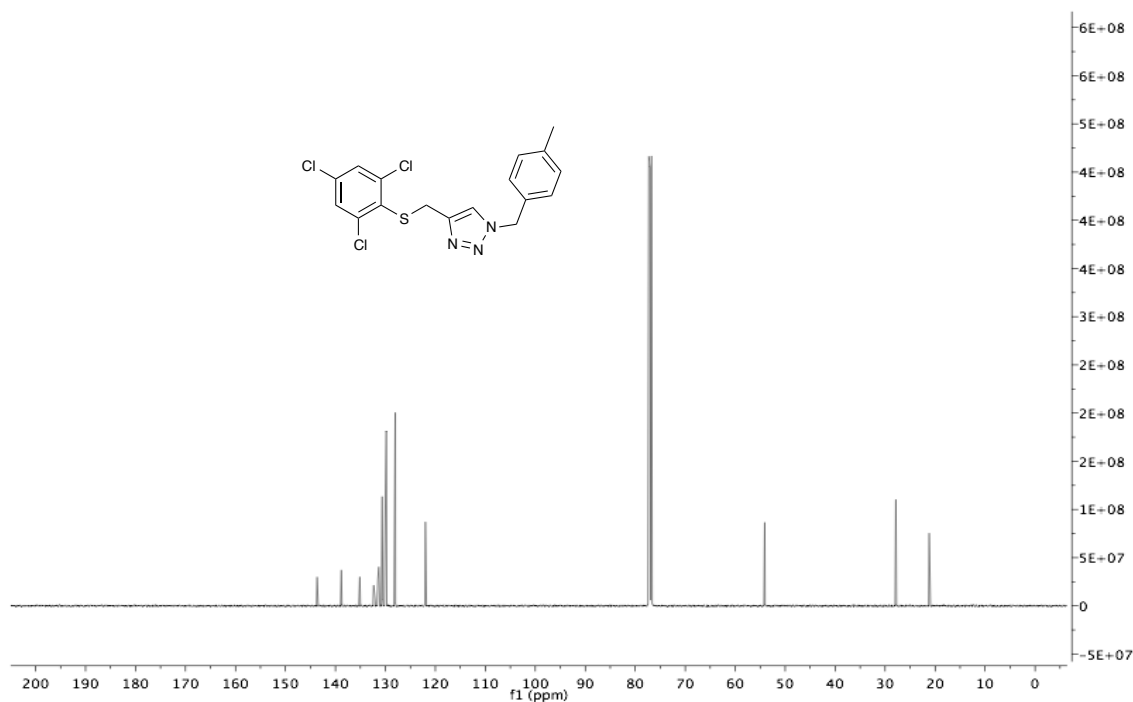
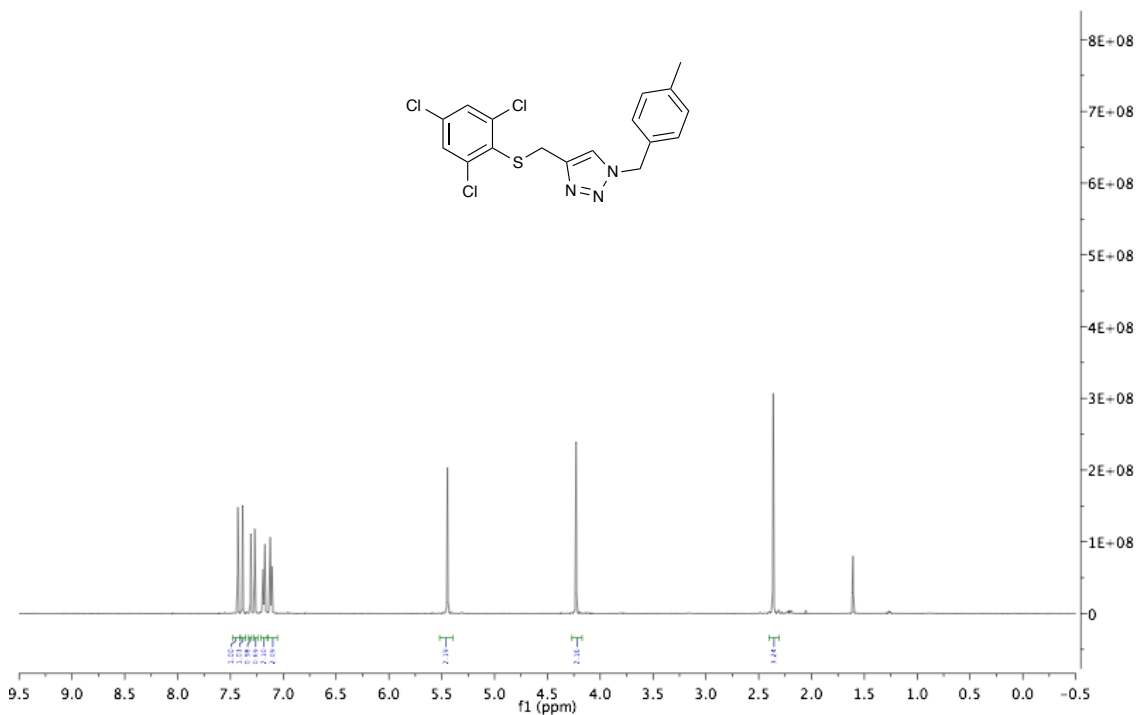
***N*-((1-benzyl-1*H*-1,2,3-triazol-4-yl)methyl)-2-bromo-*N*-isopropylbenzenesulfonamide (11g)**



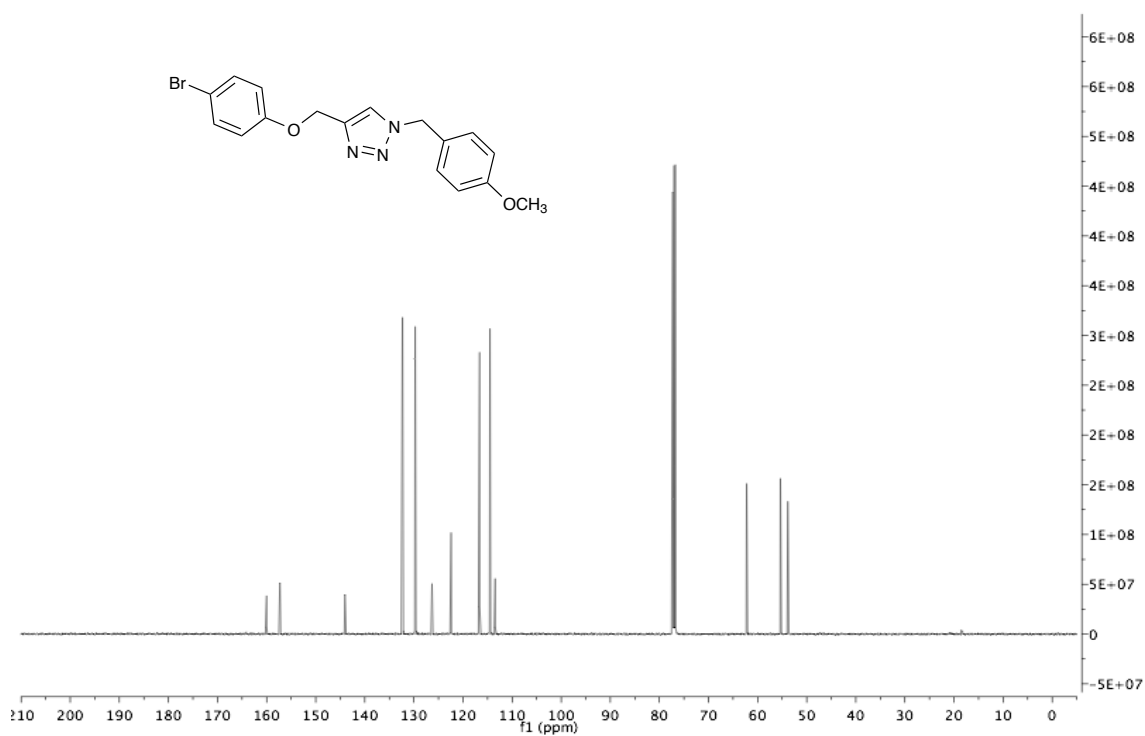
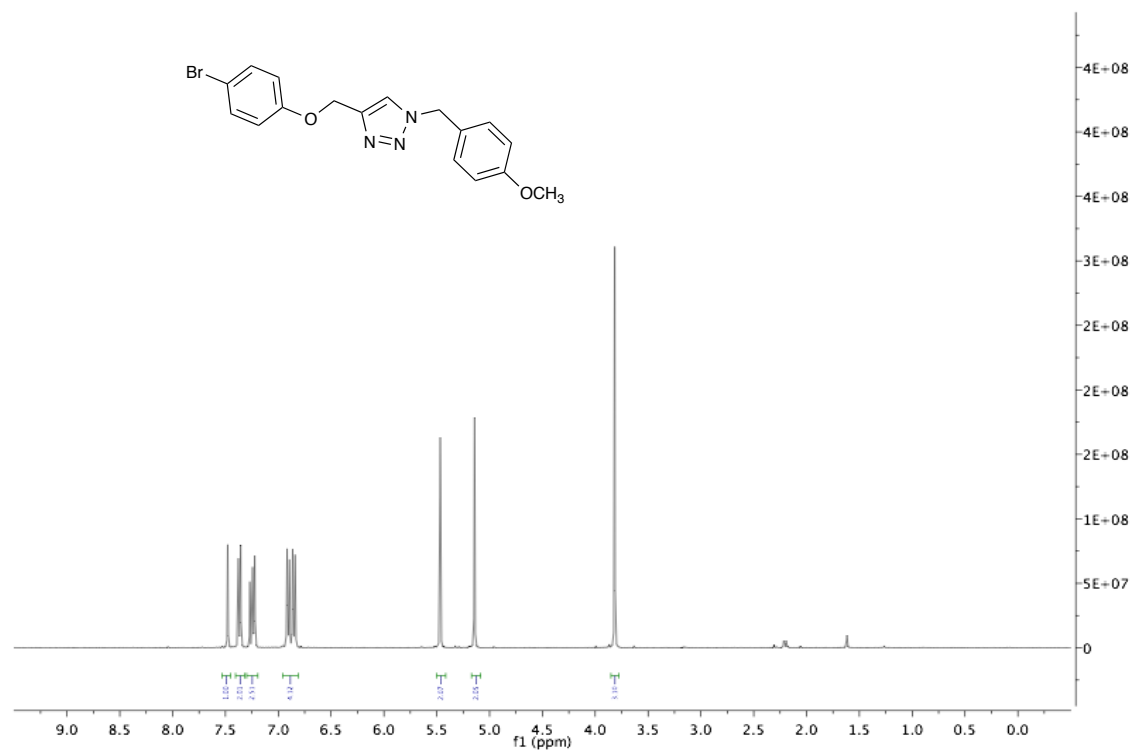
4-((4-bromophenoxy)methyl)-1-(4-methylbenzyl)-1H-1,2,3-triazole (11h)



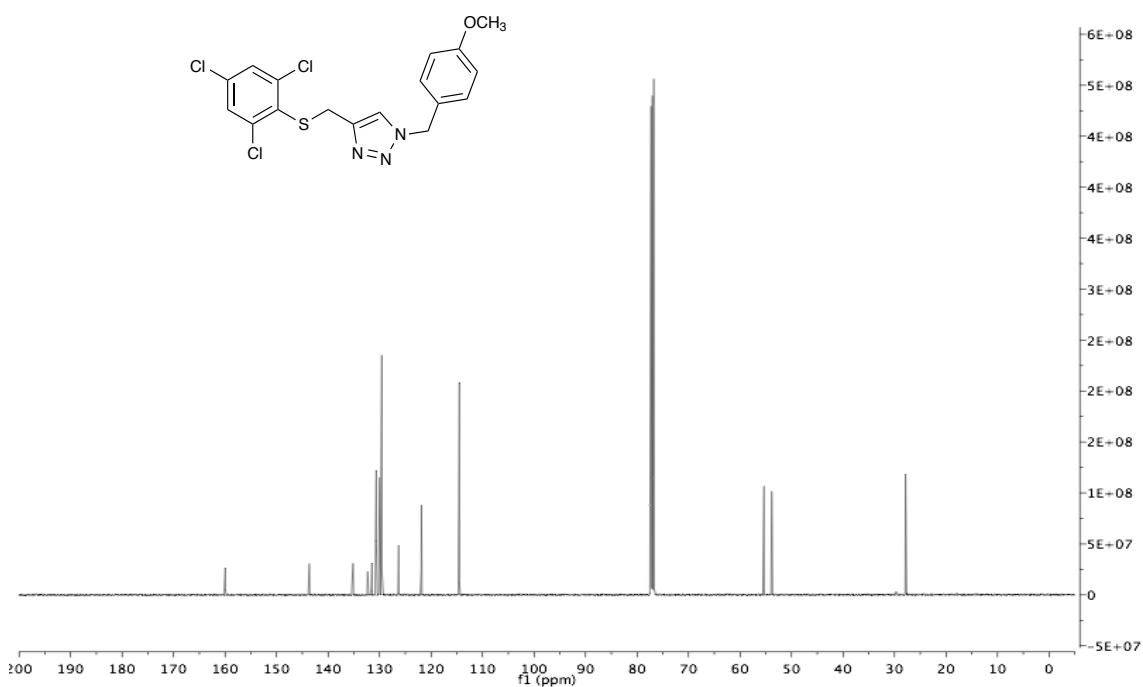
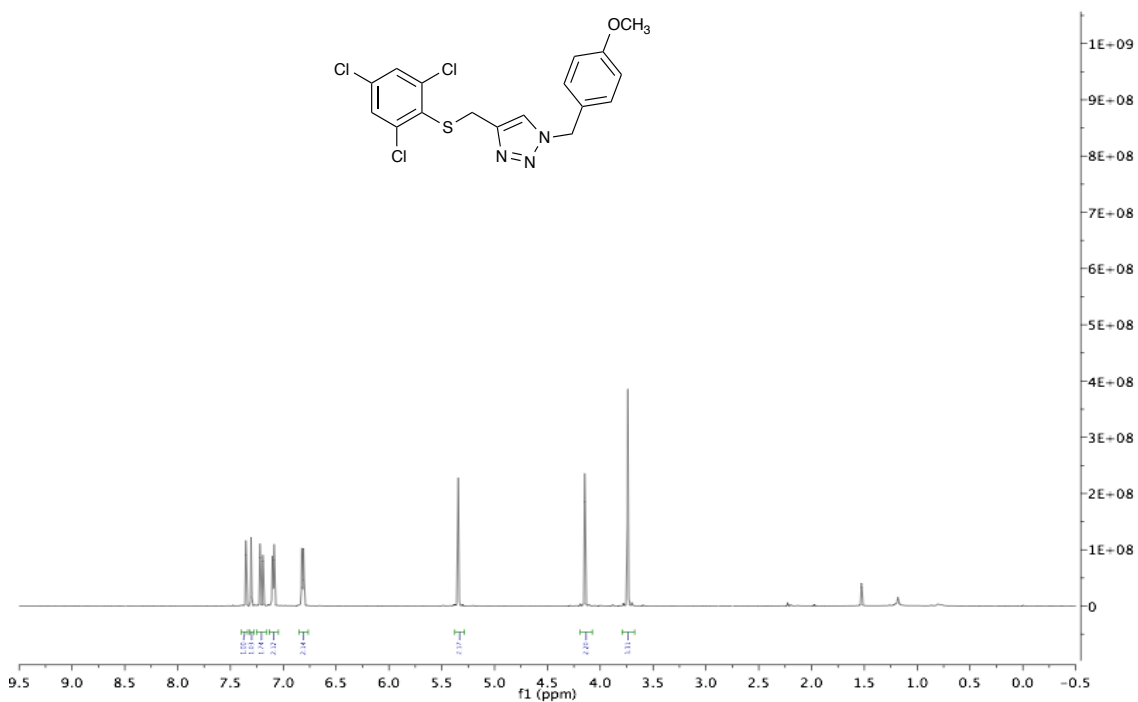
1-(4-methylbenzyl)-4-(((2,4,6-trichlorophenyl)thio)methyl)-1H-1,2,3-triazole (11i)



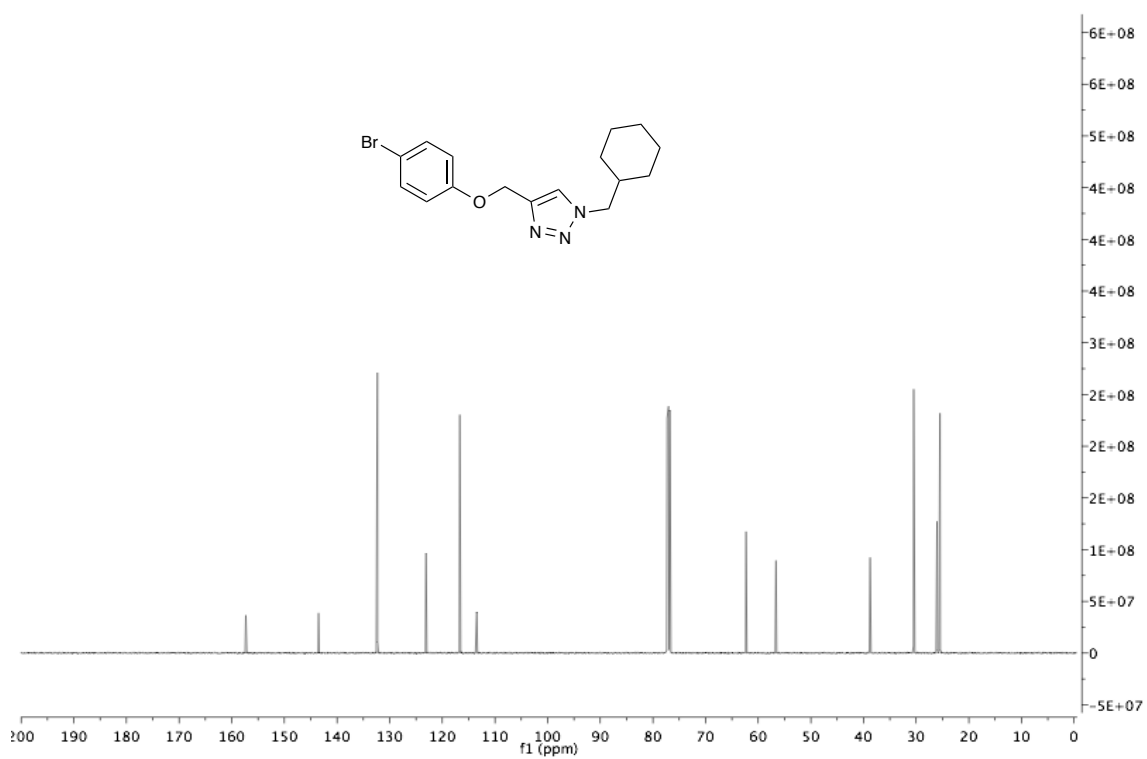
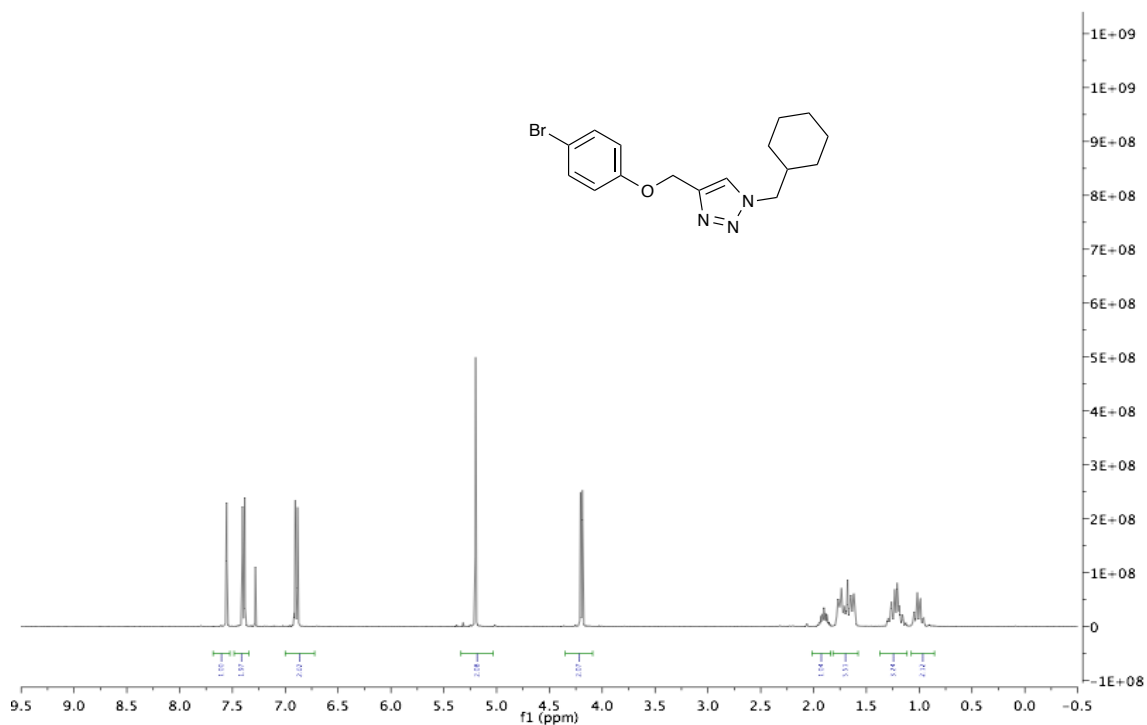
4-((4-bromophenoxy)methyl)-1-(4-methoxybenzyl)-1H-1,2,3-triazole (11j)



1-(4-methoxybenzyl)-4-(((2,4,6-trichlorophenyl)thio)methyl)-1*H*-1,2,3-triazole (11k)



4-((4-bromophenoxy)methyl)-1-(cyclohexylmethyl)-1*H*-1,2,3-triazole (11l)



1-(cyclohexylmethyl)-4-(((2,4,6-trichlorophenyl)thio)methyl)-1H-1,2,3-triazole (11m)

