

Supporting Information

Effect of post-etch annealing gas composition on the structural and electrochemical properties of Ti_2CT_x MXene electrodes for supercapacitor applications

R. B. Rakhi, Bilal Ahmed, M.N.Hedhili, Dalaver H. Anjum, and H. N.Alshareef*

Materials Science and Engineering, King Abdullah University of Science and Technology (KAUST), Thuwal 23955-6900, Saudi Arabia

*Corresponding author: husam.alshareef@kaust.edu.sa

Phone: Office: +966-(0)2-808-4477 | Cell: +966-(0)5-44700037

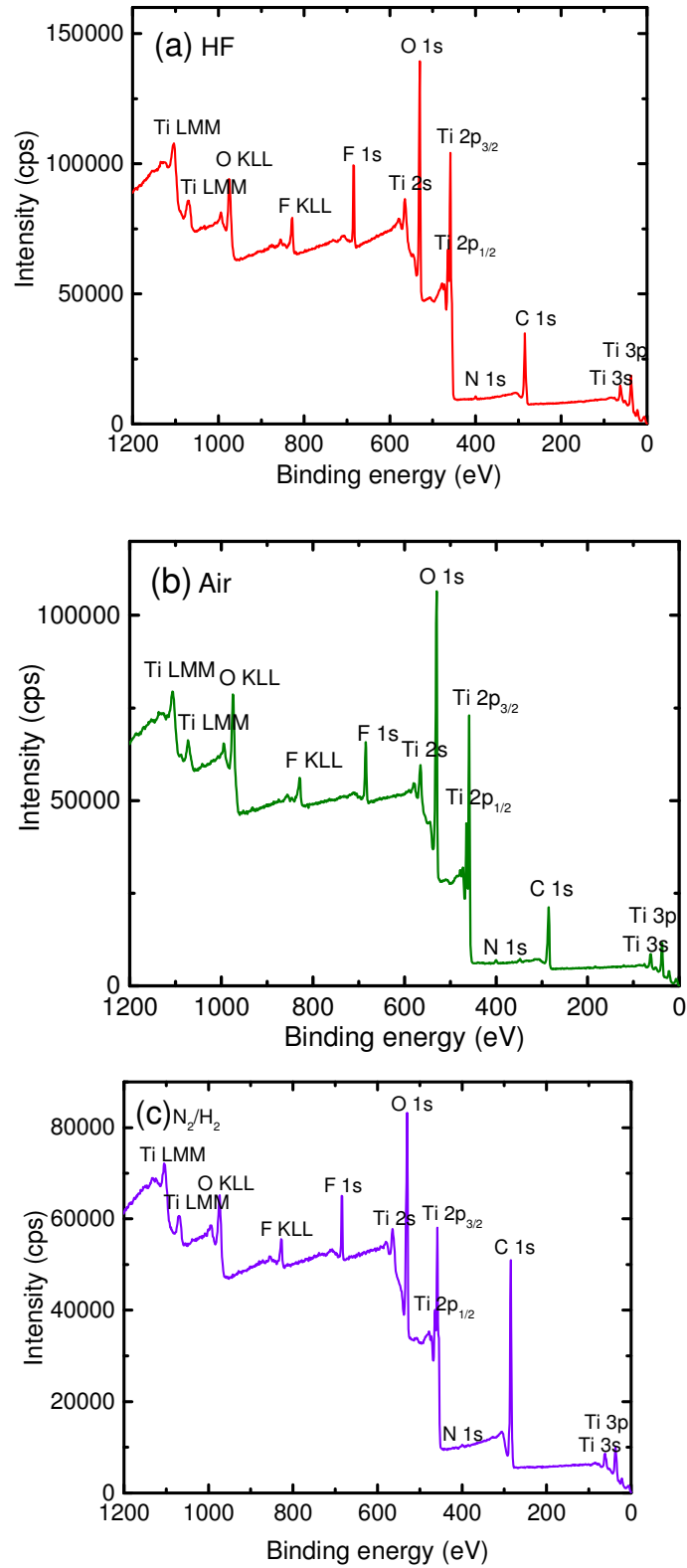


Figure S1: XPS survey spectra of (a) HF treated MAX Phase, (b) MXene sample annealed in air, and (c) MXene sample annealed in N₂/H₂ atmosphere.

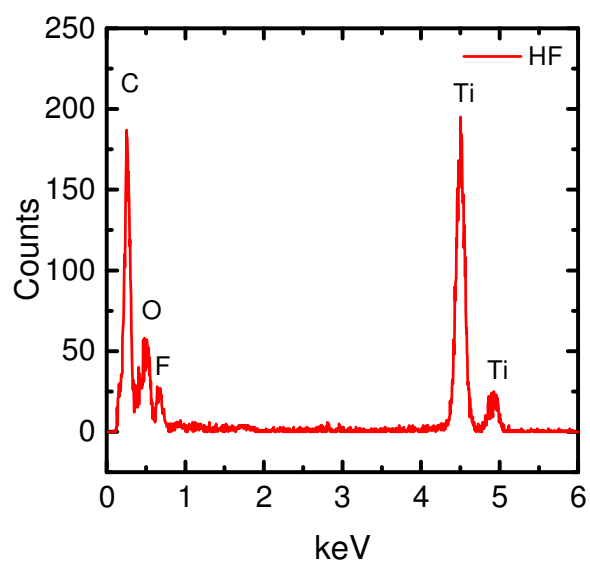


Figure S2: EDAX pattern of HF treated MAX Phase.

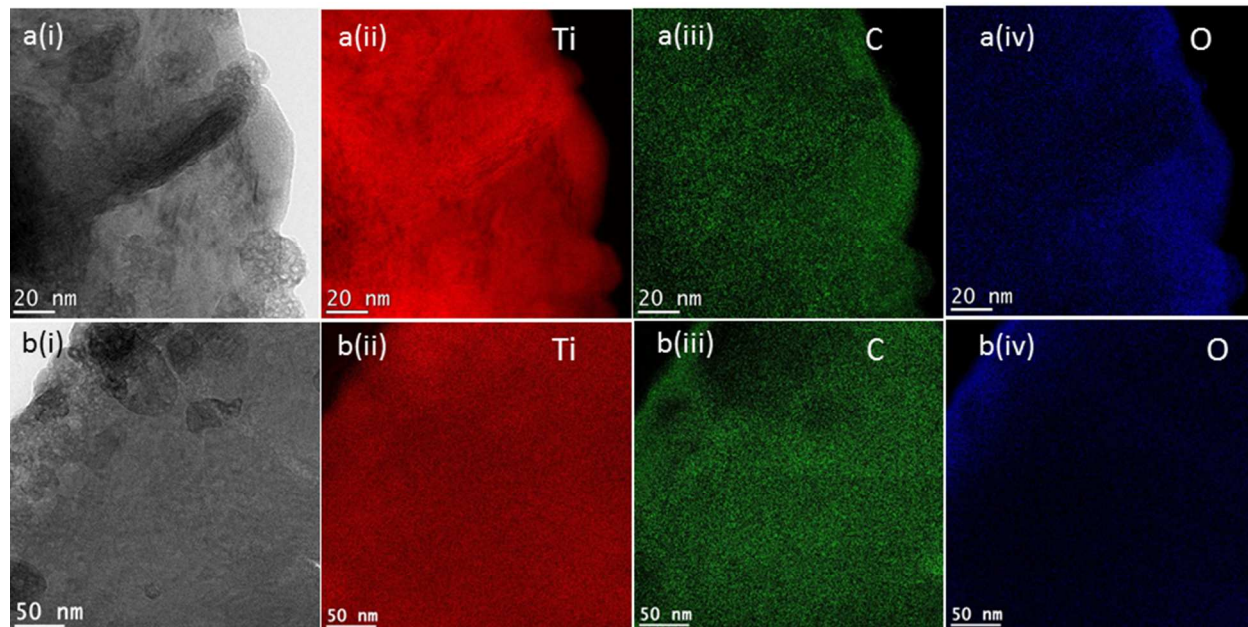


Figure S3: Elemental mapping of (a) HF treated MAX Phase and (b) MXene sample annealed in N₂/H₂ atmosphere.

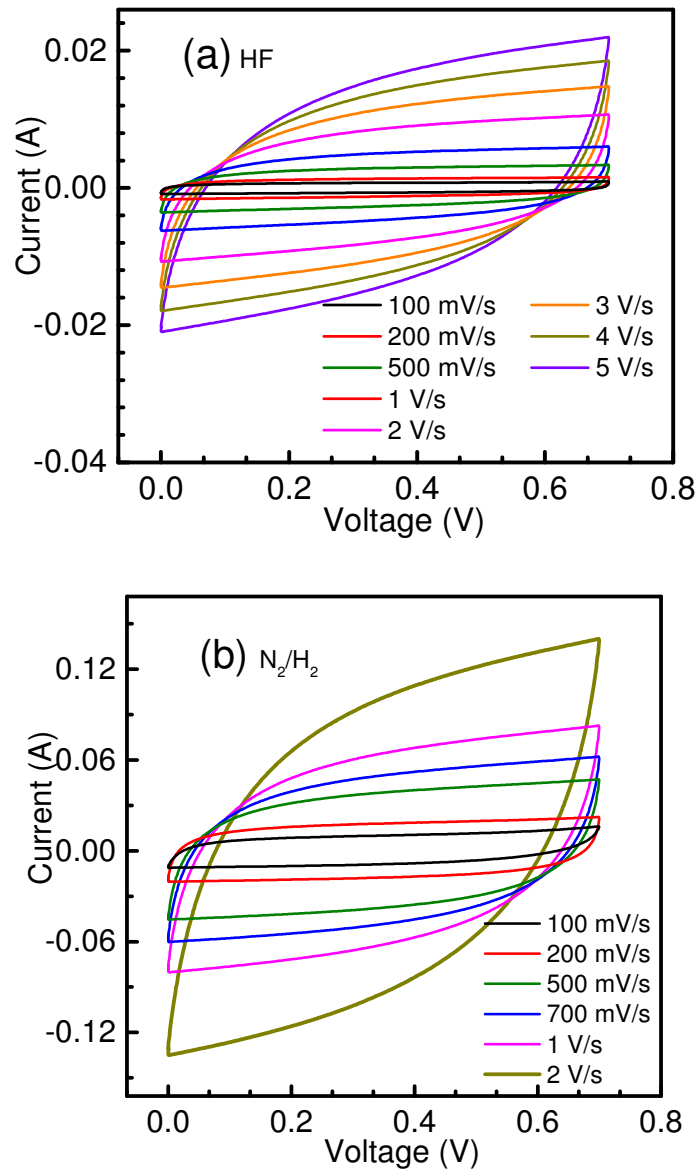


Figure S3: Cyclic Voltammograms of (a) HF treated MAX Phase and (b) MXene sample annealed in N₂/H₂ atmosphere at higher scanrates.

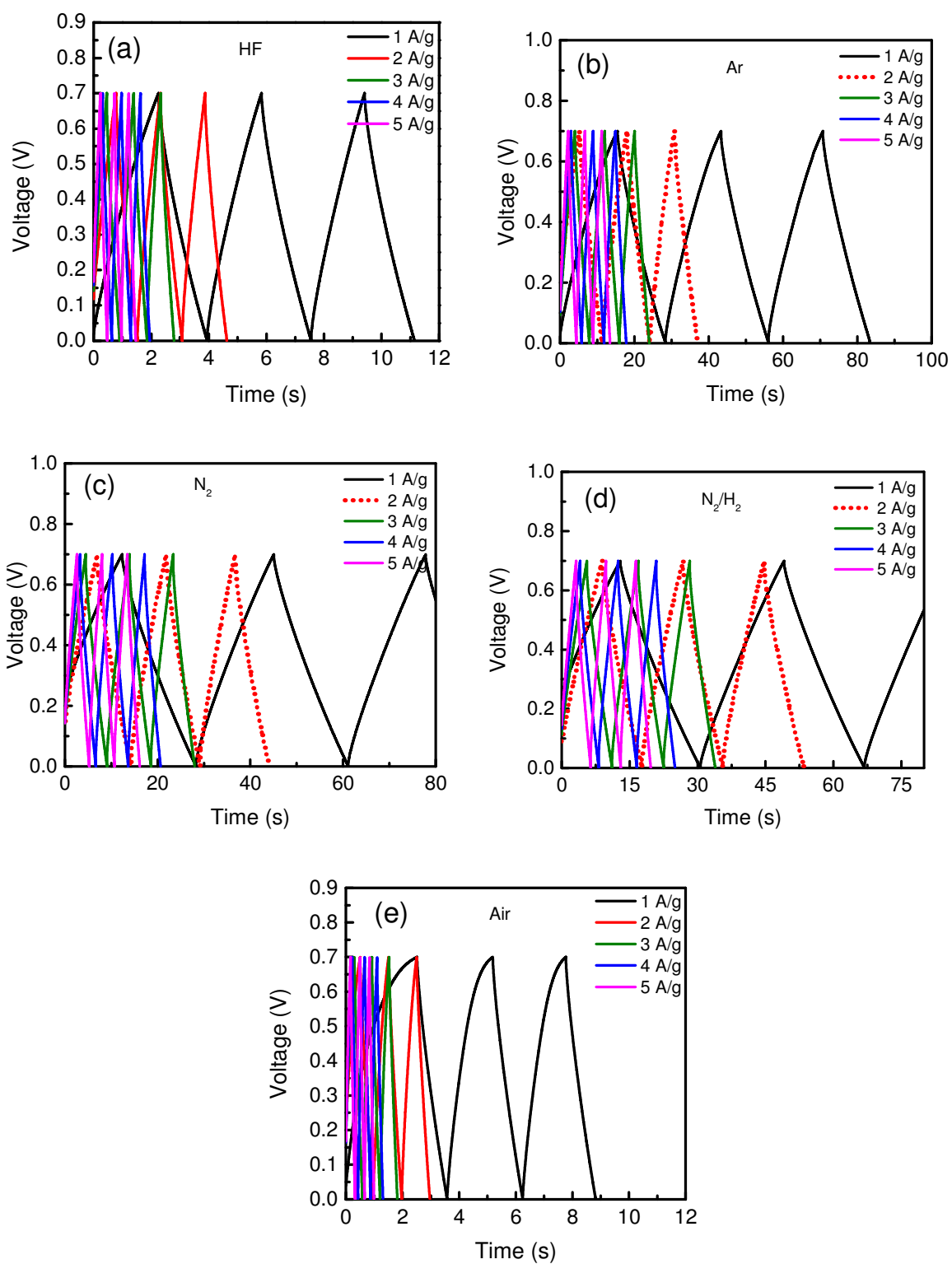


Figure S5: Galvanostatic charge-discharge curves of (a) HF treated MAX Phase and MXene samples annealed in (b) Ar, (c) N₂, (d) N₂/H₂, and (e) air atmosphere.